

**PREMIER SUBLEASE AVAILABLE**

**1616**  
S VOSS ROAD



**MOODY  
RAMBIN**

**Joe Ramin** | Managing Partner | [jrambin@moodyrambin.com](mailto:jrambin@moodyrambin.com) | 713.773.5584



View Online 

# PROPERTY DESCRIPTION

1616 S Voss is suited for tenants seeking a professional atmosphere and exceptional amenities. Recent renovations included: a two story atrium style lobby, 24-hour security, on-site management, a multi-purpose outdoor area, shared executive/employee conference rooms, and convenient access to Memorial City and the Galleria.

**Sublet Premise:** Suite 945 - 4,222 SF  
Suite 1000 - 19,354 SF

**Rate:** Negotiable

**2022 Opex:** \$11.72 per SF

**Parking:** 3.75 per 1,000 SF

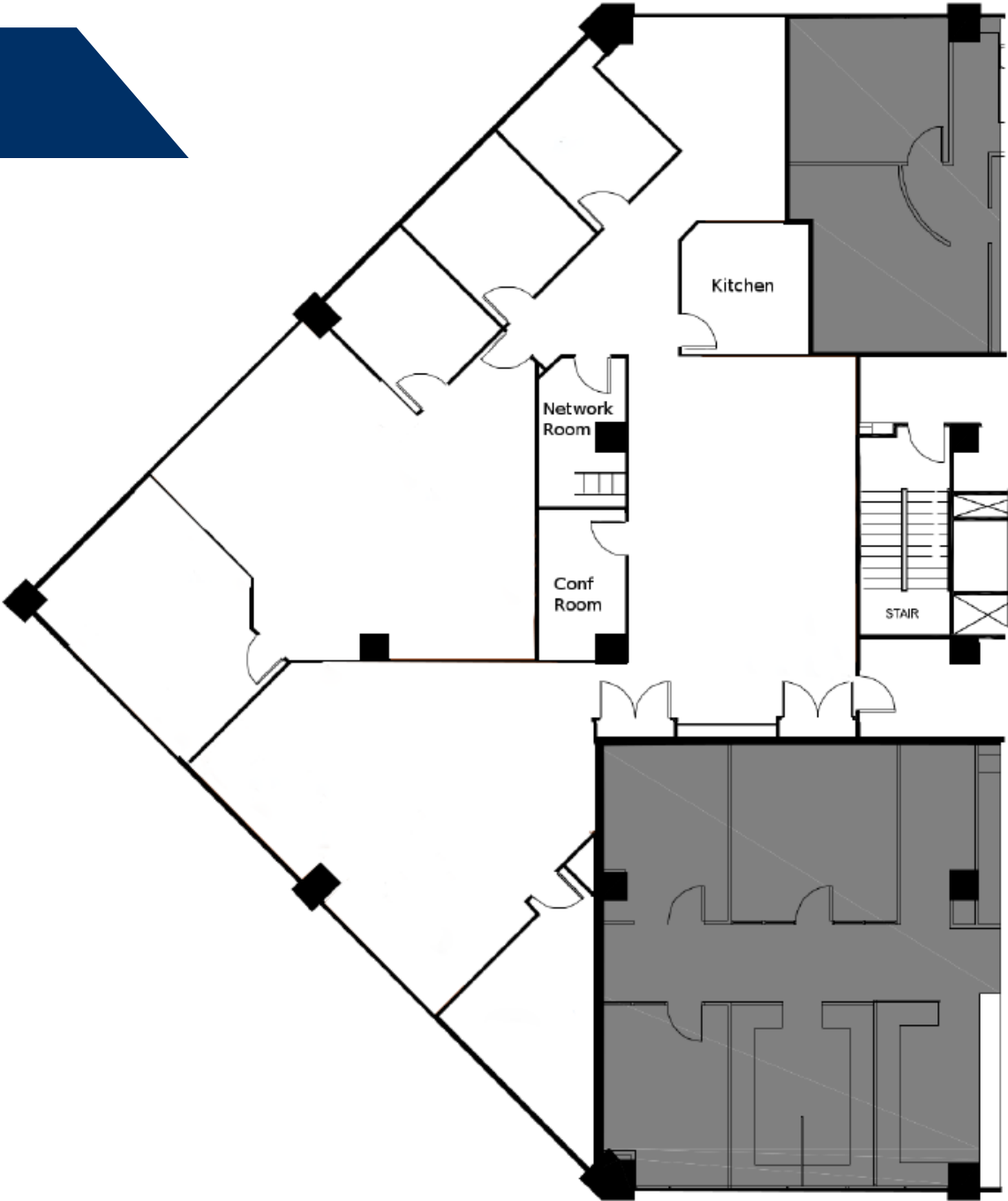
**Parking Rates:** Landlord's current market rates



# FLOOR PLAN

**SUITE 945 - 4,222 SF**

*Term: Through October 2026*





# SUITE 945 PHOTOS



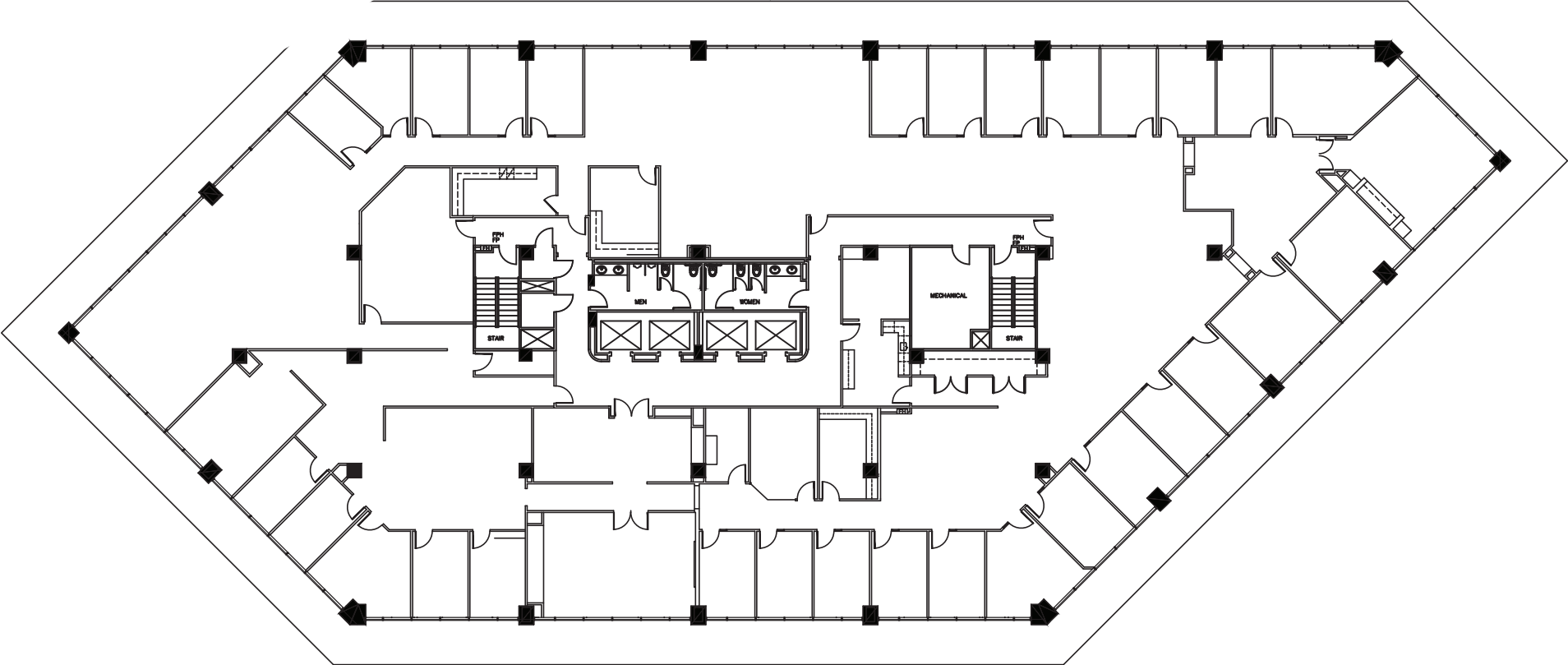


# FLOOR PLAN

**SUITE 1000 - 19,354 SF**

*Term: Through December 2025*

SUITE 1000





# SUITE 1000 PHOTOS





# MAP



## WALKABLE AMENITIES

### Bank

- 01. PNC
- 02. Wells Fargo
- 03. Chase Bank
- 04. Capital One

### Services

- 05. UPS
- 06. Boardroom

### Food

- 07. Carraba's
- 08. Escalante's
- 09. Pei Wei
- 10. Subway
- 11. Starbucks
- 12. Buffalo Grille
- 13. Jersey Mike's

### Shopping

- 14. Whole Foods
- 15. Trader Joe's
- 16. Kroger

### Healthcare

- 17. CVS Pharmacy
- 18. 24/7 Emergency Care

### Fitness

- 19. Pure Barre
- 20. 24 Hour Fitness
- 21. Orangetheory Fitness





**FOR MORE INFORMATION**  
PLEASE CONTACT THE AGENT BELOW

**Joe Ramin** | Managing Partner | [jrambin@moodyrambin.com](mailto:jrambin@moodyrambin.com) | 713.773.5584

