

1375 & 1395

N FIESTA BLVD

GILBERT, AZ 85233

CBRE

MIKE PARKER

Executive Vice President
+1 602 614 7877
mike.parker6@cbre.com

EVAN KOPLAN, SIOR, CCIM

Executive Vice President
+1 602 735 5232
evan.koplan@cbre.com



PROPERTY OVERVIEW

- + ±42,149 SF Available (divisible to ±17,275 SF)
- + ±26' clear height in warehouse
- + 100% air conditioned
- + One (1) truckwell and three (3) grade-level loading doors
- + ±4,000 amps 277/480 volt electrical service (SES)
- + ±312 parking stalls or ±4.26/1,000
- + Fire sprinklered
- + Constructed in 1998
- + Telecommunications provided by Cox Communications
- + Corporate image park with mature landscaped boulevards
- + 1375 | ±24,874 SF Total — Rental Rate: \$1.35/SF NNN
- + 1395 | ±17,275 SF Total — Rental Rate: \$1.35/SF NNN



±0.5 MILES FROM
FULL DIAMOND
INTERCHANGE AT
US-60 AND COUNTRY
CLUB DRIVE



AVAILABLE
JANUARY 1, 2026

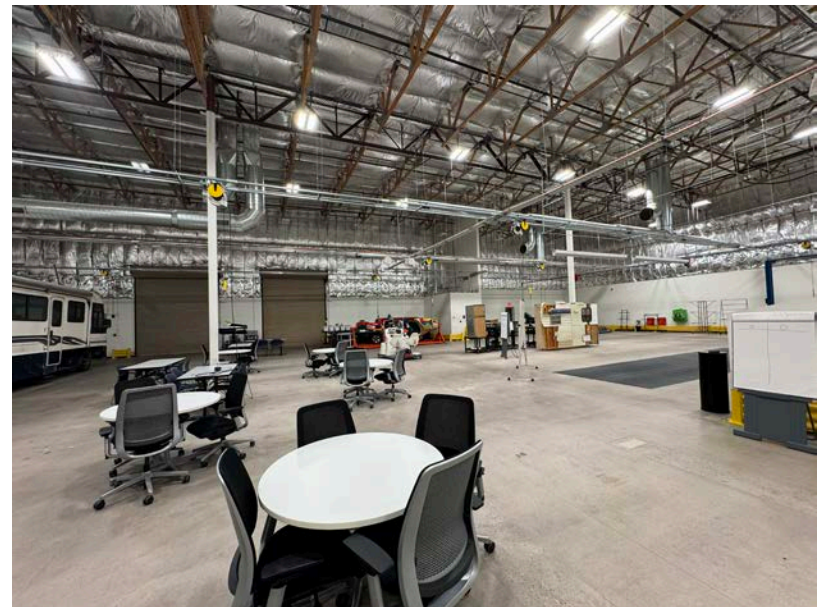
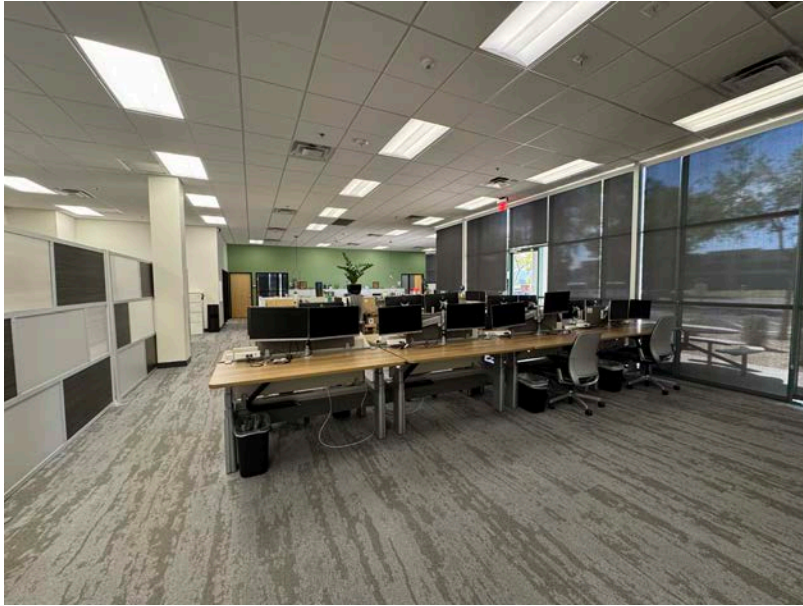


ZONED LI
(LIGHT INDUSTRIAL)
TOWN OF GILBERT

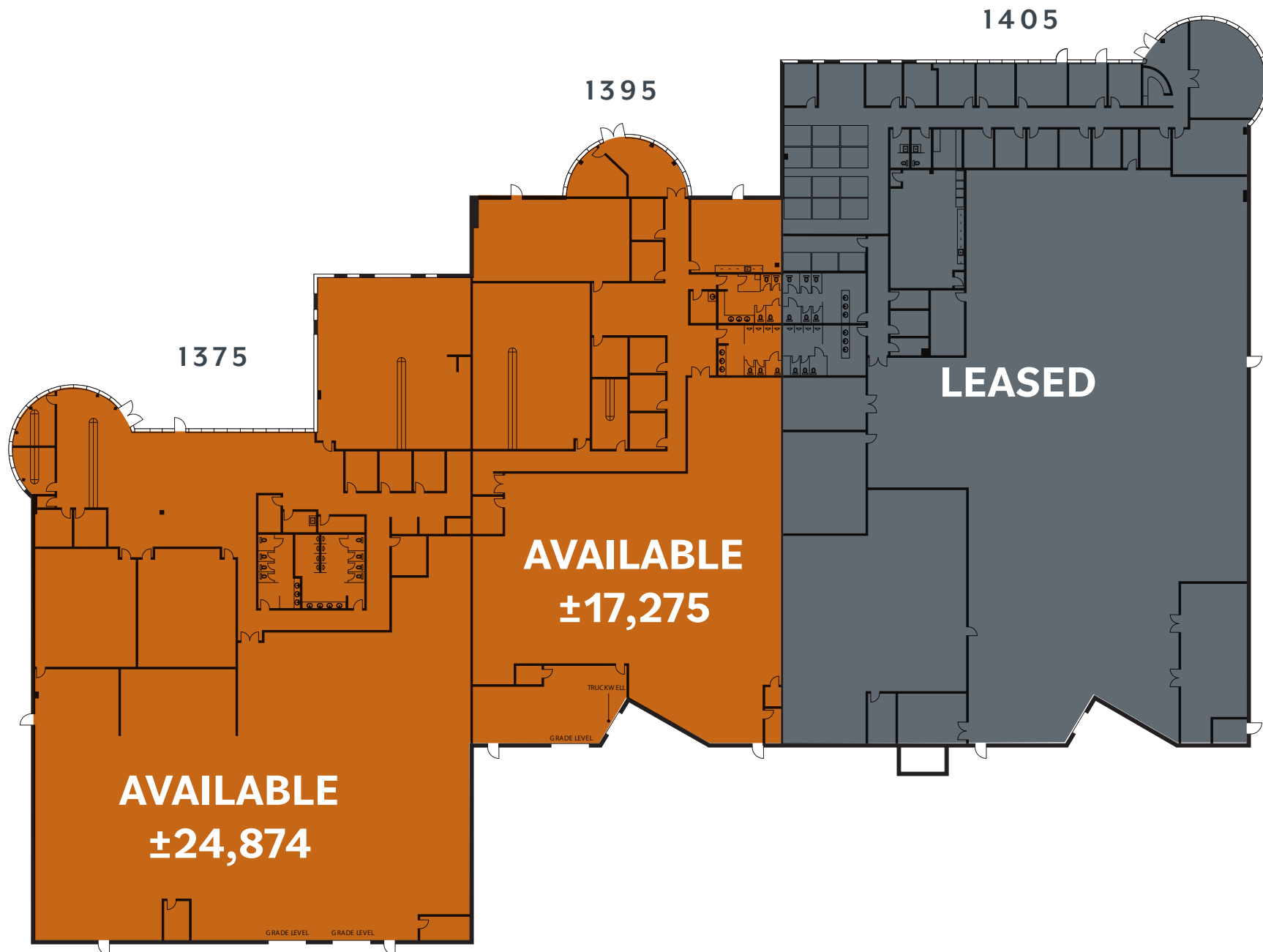
MAP

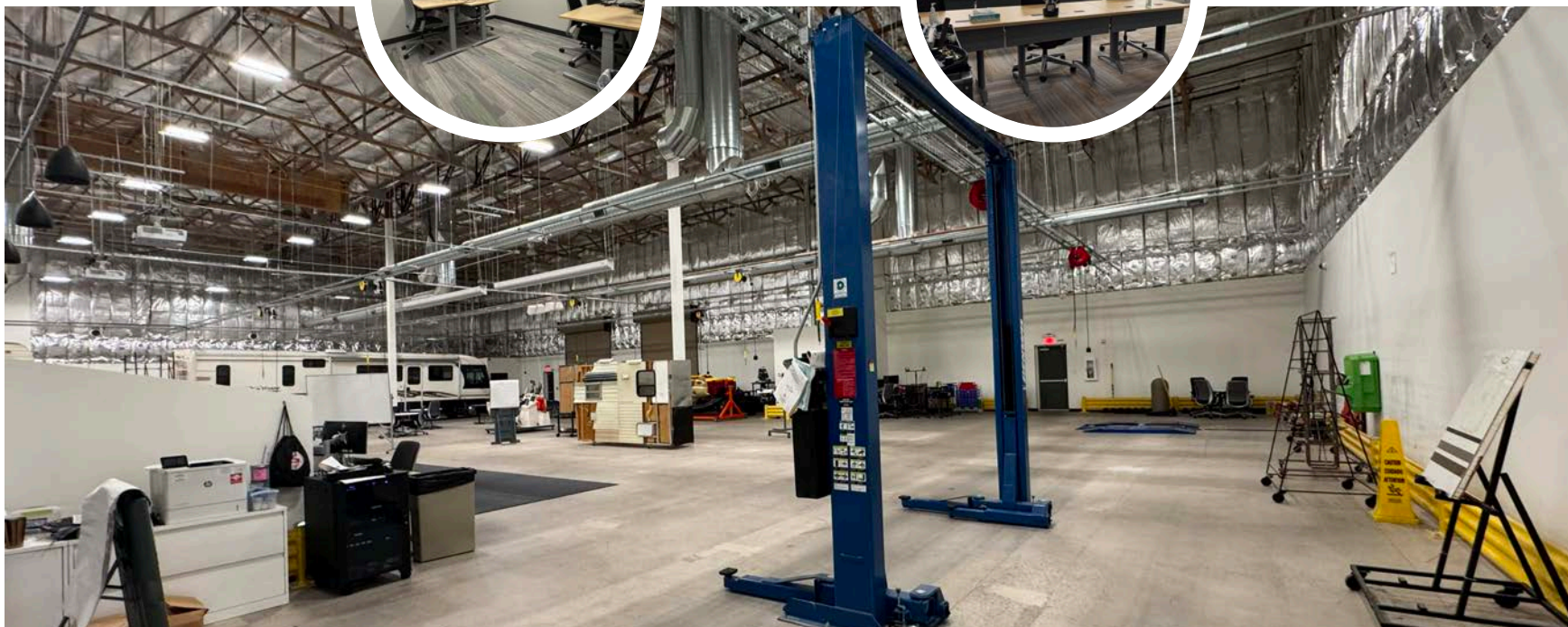
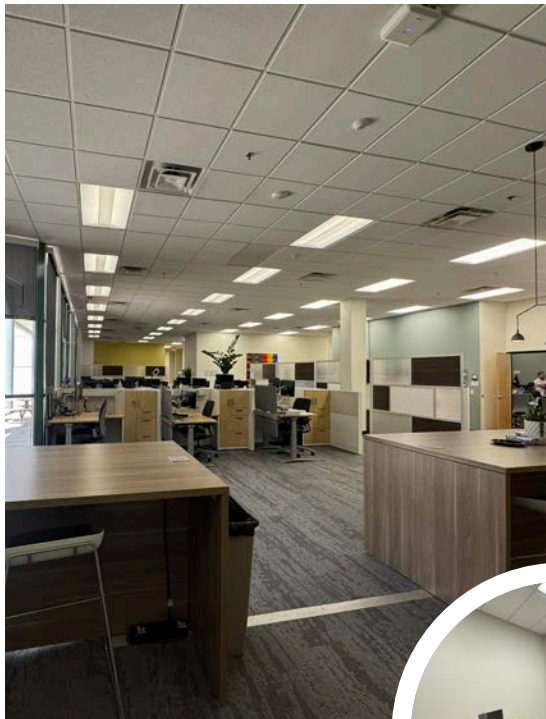


INTERIOR PHOTOS



FLOOR PLANS





1375 & 1395

N FIESTA BLVD



MIKE PARKER

Executive Vice President
+1 602 614 7877
mike.parker6@cbre.com

EVAN KOPLAN, SIOR, CCIM

Executive Vice President
+1 602 735 5232
evan.koplan@cbre.com

© 2025 CBRE, Inc. All rights reserved. This information has been obtained from sources believed reliable but has not been verified for accuracy or completeness. CBRE, Inc. makes no guarantee, representation or warranty and accepts no responsibility or liability as to the accuracy, completeness, or reliability of the information contained herein. You should conduct a careful, independent investigation of the property and verify all information. Any reliance on this information is solely at your own risk. CBRE and the CBRE logo are service marks of CBRE, Inc. All other marks displayed on this document are the property of their respective owners, and the use of such marks does not imply any affiliation with or endorsement of CBRE. Photos herein are the property of their respective owners. Use of these images without the express written consent of the owner is prohibited.

CBRE