



**URBAN  
DISTRICT  
30**

Urban District 30 is a 5-building, 977,013-square-foot Class A industrial development strategically located directly off Interstate 30 in the Northeast Dallas-Garland-Mesquite submarket. Located 12-miles from Dallas' CBD, the project has access to one of the strongest labor sources in the Dallas/Fort Worth metroplex.

**URBAN DISTRICT 30 | 5-BUILDINGS**

**596,500 SF AVAILABLE | NEARING COMPLETION!**

Interstate 30 & Columbia Parkway | Urban District 30



**STREAM**

**MATT DORNAK, SIOR**  
mdornak@streamrealty.com  
214-267-0461

**BLAKE KENDRICK**  
bkendrick@streamrealty.com  
214-267-0472

**urban**  
LOGISTICS REALTY

URBAN DISTRICT 30 IS A 5-BUILDING  
977,013-SQUARE-FOOT CLASS A INDUSTRIAL DEVELOPMENT



## DETAILS

### BUILDING 1 - LEASED

Available SF (Divisible):	380,513 SF
Dimensions:	470' d x 810' w
Office SF:	BTS
Loading:	Cross Dock
Clear Height:	36'
Sprinkler:	ESFR
Dock Doors:	79 (9' x 10')
Ramp Doors:	4
Trailer Parking:	77
Car Parking:	257
Column Spacing:	54' x 50'
Staging Bay:	60'
Warehouse Lighting:	LED
Dock Levelers:	BTS
Truck Court:	185'

### BUILDING 2

Available SF (Divisible):	129,473 SF
Dimensions:	240' d x 540' w
Office SF:	BTS
Loading:	Rear Load
Clear Height:	28'
Sprinkler:	ESFR
Dock Doors:	23 (9' x 10')
Ramp Doors:	3
Trailer Parking:	17
Car Parking:	189
Column Spacing:	55' x 60'
Staging Bay:	60'
Warehouse Lighting:	LED
Dock Levelers:	BTS
Truck Court:	185'

### BUILDING 3

Available SF (Divisible):	169,924 SF
Dimensions:	210' d x 810' w
Office SF:	BTS
Loading:	Front Load
Clear Height:	32'
Sprinkler:	ESFR
Dock Doors:	39 (9' x 10')
Ramp Doors:	2
Trailer Parking:	0
Car Parking:	102
Column Spacing:	54' x 50'
Staging Bay:	60'
Warehouse Lighting:	LED
Dock Levelers:	BTS
Truck Court:	140'

### BUILDING 4

Available SF (Divisible):	138,402 SF
Dimensions:	260' d x 540' w
Office SF:	BTS
Loading:	Rear Load
Clear Height:	28'
Sprinkler:	ESFR
Dock Doors:	27 (9' x 10')
Ramp Doors:	2
Trailer Parking:	0
Car Parking:	173
Column Spacing:	54' x 50'
Staging Bay:	60'
Warehouse Lighting:	LED
Dock Levelers:	BTS
Truck Court:	140'

### BUILDING 5

Available SF (Divisible):	158,701 SF
Dimensions:	210' d x 756' w
Office SF:	BTS
Loading:	Rear Load
Clear Height:	28'
Sprinkler:	ESFR
Dock Doors:	42 (9' x 10')
Ramp Doors:	2
Trailer Parking:	0
Car Parking:	204
Column Spacing:	54' x 50'
Staging Bay:	60'
Warehouse Lighting:	LED
Dock Levelers:	BTS
Truck Court:	140'

## CONTACTS

### MATT DORNAK, SIOR

mdornak@streamrealty.com  
214-267-0461

### BLAKE KENDRICK

bkendrick@streamrealty.com  
214-267-0472





## LOCATION AND PROXIMITY

INTERSTATE 635: 1.1 MILE

INTERSTATE 30: 0.1 MILES

UPS GROUND: 5.1 MILES

FEDEX GROUND: 5.0 MILES

DALLAS CBD: 12 MILES

## FOR MORE INFORMATION

**MATT DORNAK, SIOR**

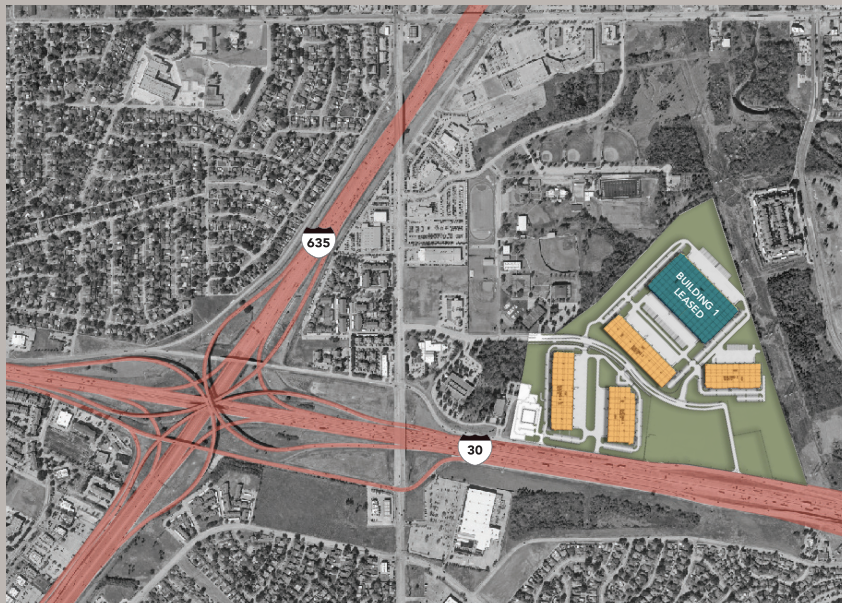
MDORNAK@STREAMREALTY.COM

(214) 267-0461

**BLAKE KENDRICK**

BKENDRICK@STREAMREALTY.COM

(214) 267-0472



5

773,973 SF AVAILABLE



STRATEGICALLY LOCATED



IMMEDIATE ACCESS TO I30



ACCESS TO LABOR



GREAT VISIBILITY



CITY INCENTIVES