

Retail Space For Lease

1440 S. Escondido Blvd.
Escondido, CA



For more information, please contact:



Nick Zech
858-232-2100
nzech@cdccommercial.com
CalBRE Lic. #01721457

Matt Orth
858-736-1337
morth@cdccommercial.com
CalBRE Lic. #01884500

11440 W. Bernardo Ct., #300
San Diego, CA 92127
T: 760-743-8500
www.cdccommercial.com

Property Information

- Retail Space located on the first floor of a mixed use building
- Easy access to Interstate 15
- Dedicated covered parking with after hours security gate
- Close Proximity to Major Shopping Centers and Eateries

Contact Broker for additional information.



Available

Suite B/C - 1,825 SF

Suite G - 775 SF

**\$1.00 psf
+ NNN**

This information is compiled from data which we believe to be correct but no liability is assumed by this company as to accuracy of such data. V22

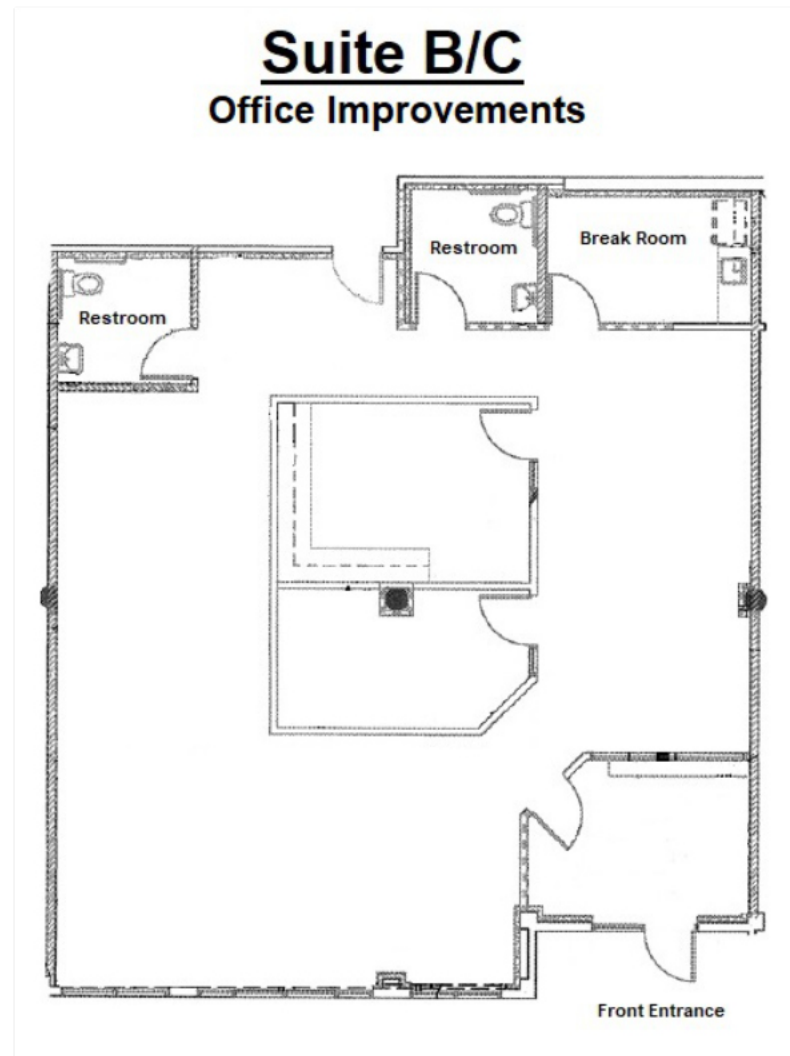
For more information, please contact:

Nick Zech
858-232-2100
nzech@cdccommercial.com
CalBRE Lic. #01721457

Matt Orth
858-736-1337
morth@cdccommercial.com
CalBRE Lic. #01884500

11440 W. Bernardo Ct., #300
San Diego, CA 92127
T: 760-743-8500
www.cdccommercial.com

Floor Plan - Suite B/C



This information is compiled from data which we believe to be correct but no liability is assumed by this company as to accuracy of such data. V22

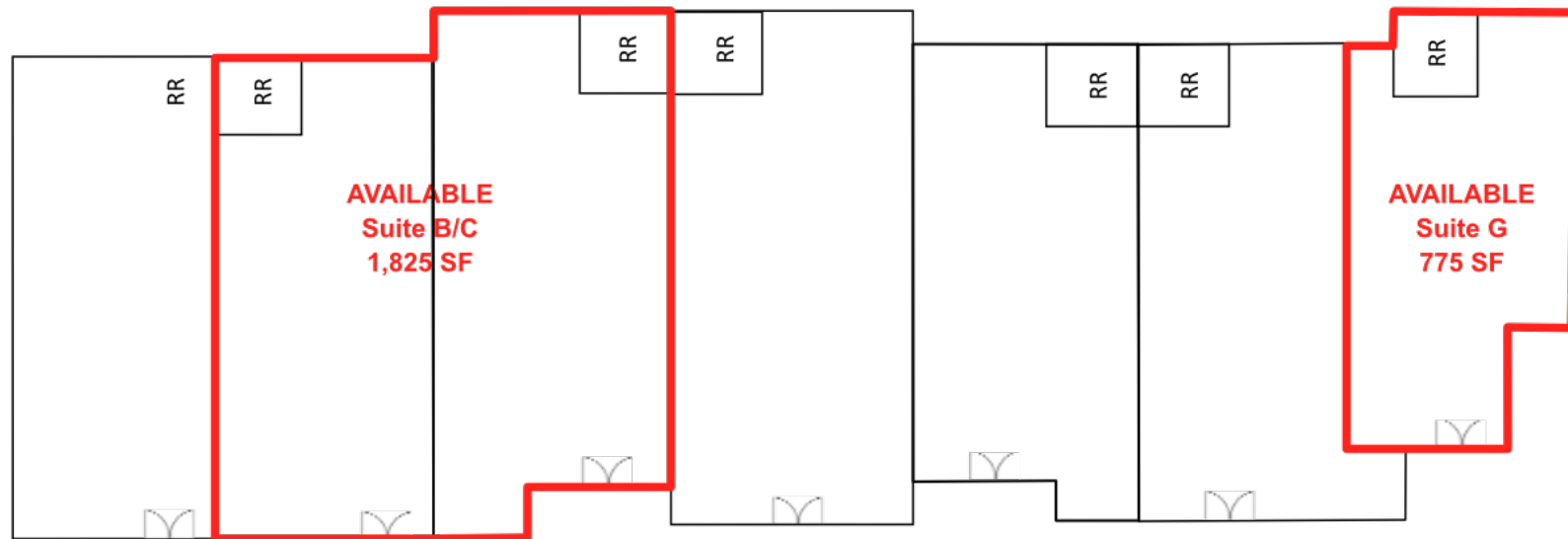
For more information, please contact:

Nick Zech
858-232-2100
nzech@cdccommercial.com
CalBRE Lic. #01721457

Matt Orth
858-736-1337
morth@cdccommercial.com
CalBRE Lic. #01884500

11440 W. Bernardo Ct., #300
San Diego, CA 92127
T: 760-743-8500
www.cdccommercial.com

Site Plan



S. Escondido Blvd.

This information is compiled from data which we believe to be correct but no liability is assumed by this company as to accuracy of such data. V22

For more information, please contact:

Demographics

Population	2 Mile	5 Mile	10 Mile
2020 Total Population:	104,864	193,666	429,693
2024 Total Projection:	100,801	187,409	418,563
Population Projection 2029:	99,452	185,155	418,563
Median Age:	34.7	37.8	39.7
Households			
2024 Total Households:	32,204	62,729	144,389
HH Growth 2024-2029:	-0.3%	-0.3%	-0.2%
Median Household Inc:	\$63,695	\$79,282	\$100,965
Avg Household Size:	3.1	3	2.9
2020 Avg HH Vehicles:	2.00	2.00	2.00
Housing			
Median Home Value:	\$547,535	\$675,169	\$775,206
Median Year Built:	1977	1979	1984

This information is compiled from data which we believe to be correct but no liability is assumed by this company as to accuracy of such data. V22

