

Corporate
SQUARE
OFFICE PARK

Full Building Opportunity



8,000 – 67,771 SF Corporate Office Space

1015 Corporate Square Dr | Creve Coeur, MO 63132

NAIDESCO

The information contained herein has been given to us by the owner of the property or other sources we deem reliable. We have no reason to doubt its accuracy, but we do not guarantee it. All information should be verified prior to lease or purchase.

8112 Maryland Ave, Suite 300 | St. Louis MO 63105
314 994 4800 | info@naidesco.com | naidesco.com

1015 Corporate Square Building Features



- 67,771 SF office building available for lease
- Full building or full floor ($\pm 22,500$ SF) available
- Building & monument signage available
- Abundant free surface parking
- Quick and convenient access to Olive &

Lindbergh Blvd

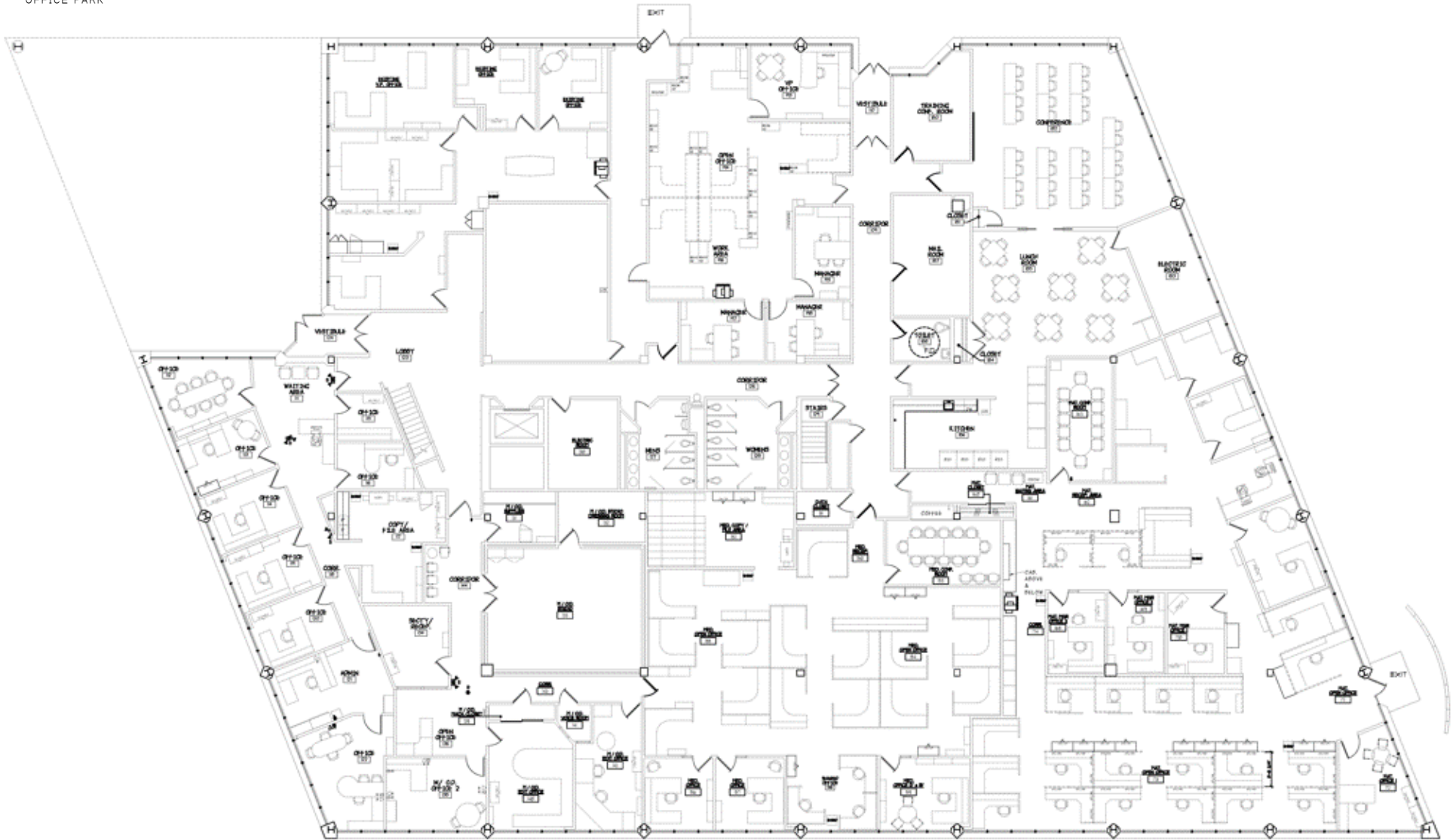
- Located in an [Opportunity Zone](#)
- Part of the growing 39 North Innovation District
- Numerous amenities within a short distance
- Lease Rate: \$19.50 / SF, Full Service
- Sale Price: \$6,500,000 (\$95.91 / SF)

Matt Ruck, CCIM

314 994 4445 Direct • 314 409 8676 Mobile
mbruck@naidesco.com

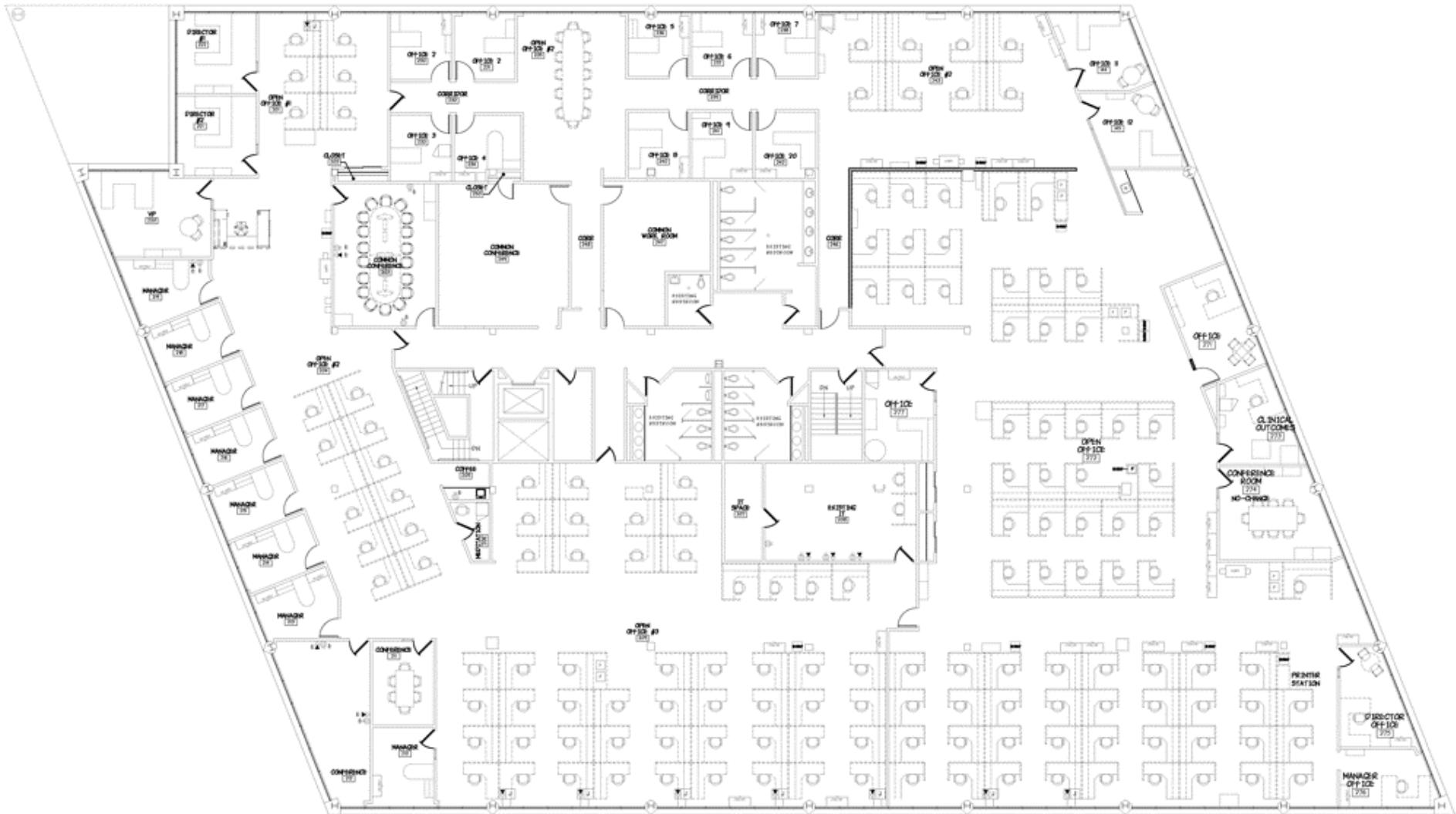
Michelle Goodwin, CCIM

314 994 4944 Direct • 636 236 9802 Mobile
mgoodwin@naidesco.com



EXISTING FLOOR PLAN
SCALE: 1/8" = 1'-0"



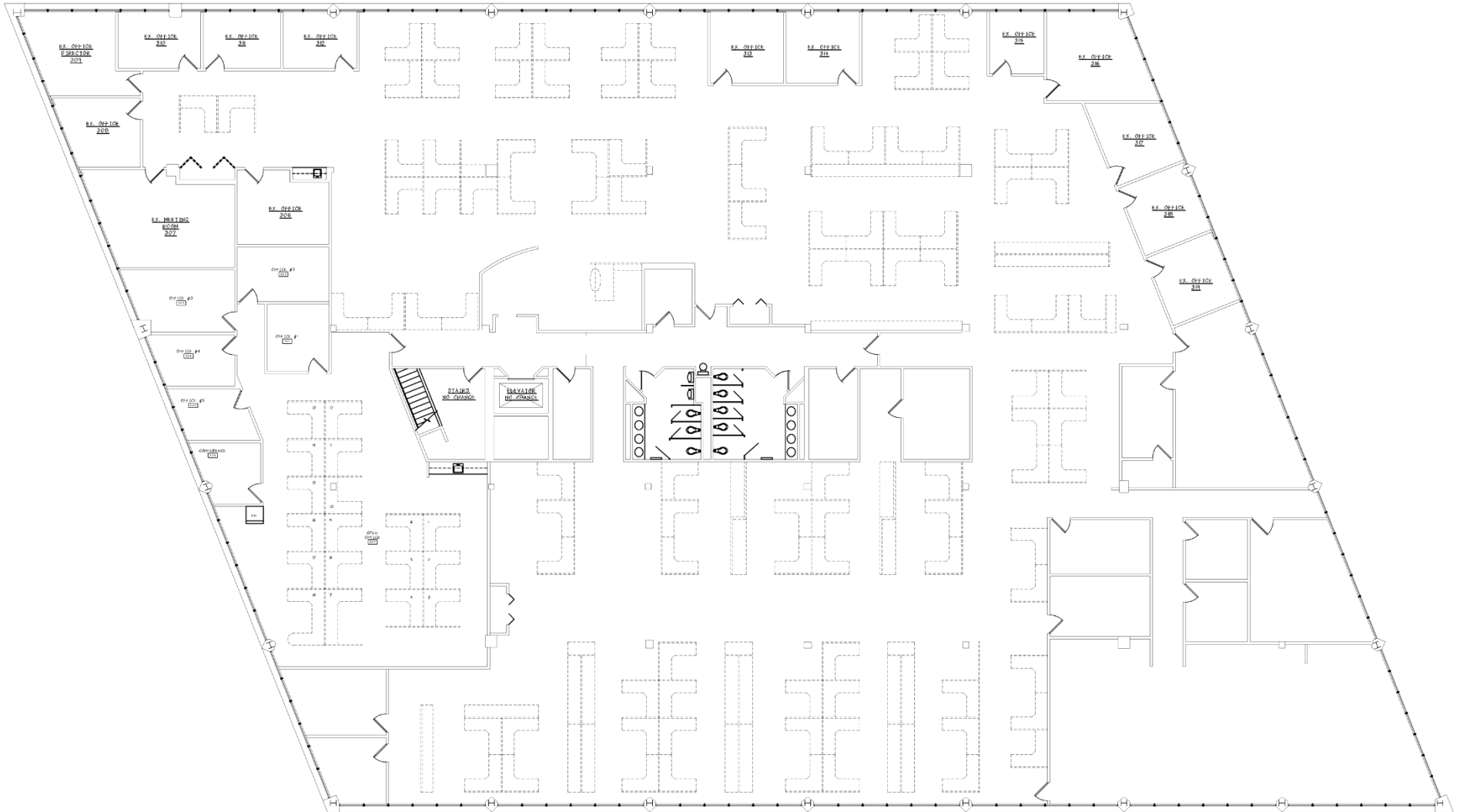


EXISTING FLOOR PLAN
SCALE: 1/8" = 1'-0"



Click for 360
Virtual Tour

1015 Corporate Square Dr.
3rd Floor Plan



THIRD FLOOR PLAN
SCALE: 1/8" = 1'-0"



**Corporate
SQUARE**

OFFICE PARK
CREVE COEUR, MO

BENSON HILL™
NOURISHING INNOVATION™

**DONALD DANFORTH
PLANT SCIENCE CENTER**

**HELIX CENTER
BIOTECH INCUBATOR**

BIO RESEARCH & DEVELOPMENT GROWTH
BRDG Park
AT THE DANFORTH PLANT SCIENCE CENTER



NAIDESCO

Matt Ruck, CCIM
314 994 4445 Direct
mruck@naidesco.com

Michelle Goodwin, CCIM
314 994 4944 Direct
mgoodwin@naidesco.com

8112 Maryland Ave, Suite 300
St. Louis, MO 63105
314 994 4800
naidesco.com

