

For Sale or Lease

# Industrial Office / Warehouse

7648 E 46th Pl Tulsa, OK 74145

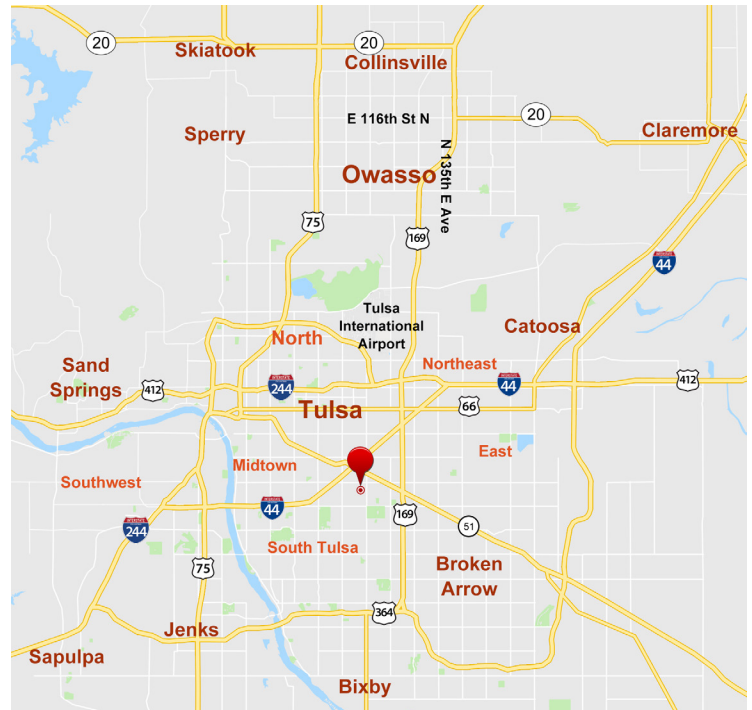
**WIGGIN**  
PROPERTIES, LLC

41 YEARS STRONG



## Property Features

- ±1,650 SF Available
- Situated on ±0.23 Acres
- Reception Area, (2) Private Offices and Break Room
- Large Climate Controlled Assembly / Flex Room
- Fully Climate Controlled
- Zoned Industrial Light
- Centrally Located
- ±50' Frontage on 46th Place
- Double Door Loading Access
- Small Hard Surfaced Yard Space at Rear of Building
- **Income Producing Cell Tower Included in Sale**



Call Shawna Hale or John Watchous at **918.935.2010**

[shale@wiginprop.com](mailto:shale@wiginprop.com) or [jwatchous@wiginprop.com](mailto:jwatchous@wiginprop.com) | [wiginprop.com](http://wiginprop.com)

This material is provided for information purposes only. It is from sources believed to be reliable. However, Wiggin Properties makes no warranties or representations, expressed or implied, as to the accuracy or sufficiency of the information. It is presented subject to errors, omissions, changes or withdrawal without notice. Square footage is provided by the local County Assessor or the Owner. Photos and graphics with copyrights by Costar, Google, Wiggin Properties and independent contractors are used with permission.

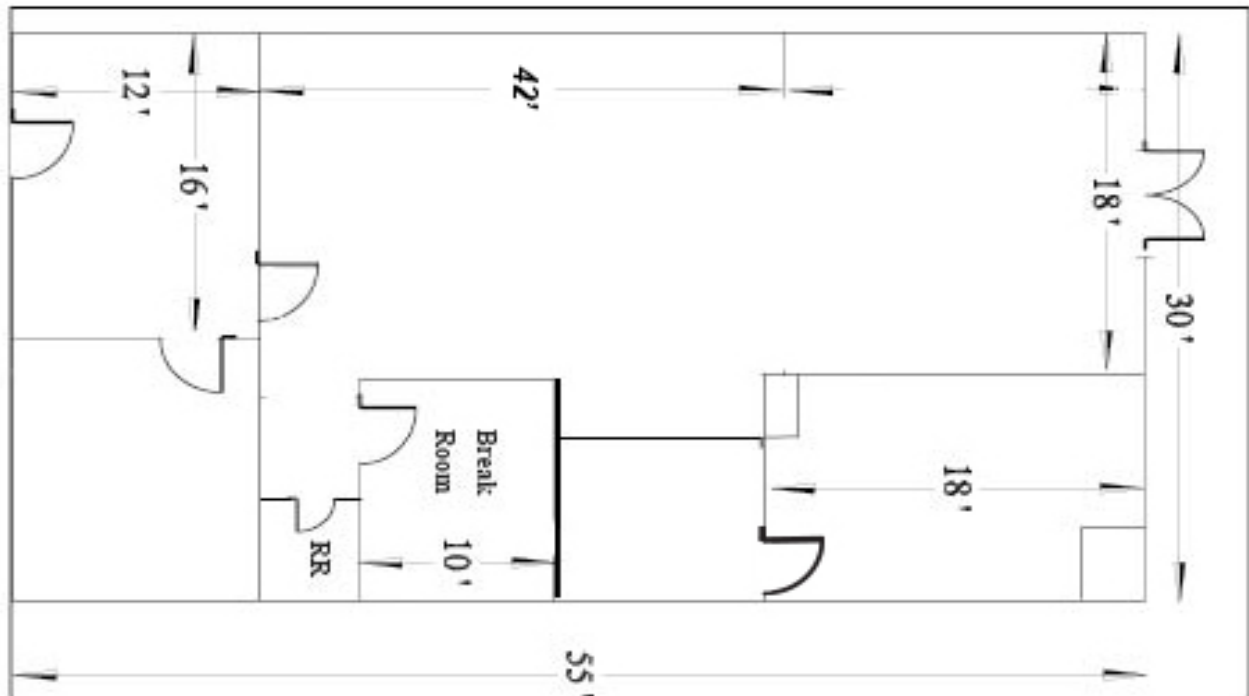
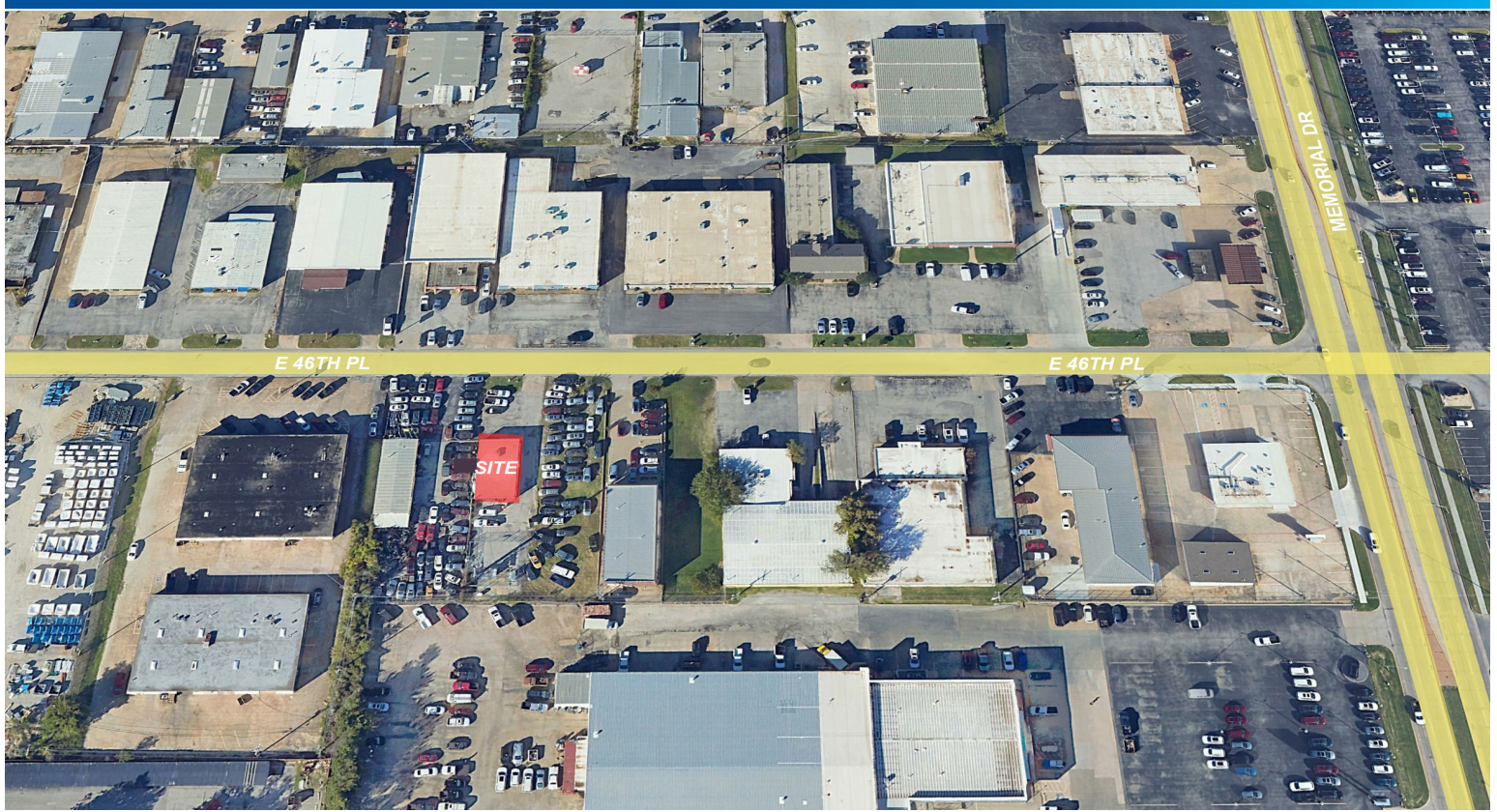
For Sale or Lease

# Industrial Office / Warehouse

7648 E 46th PI Tulsa, OK 74145

**WIGGIN**  
PROPERTIES, LLC

41 YEARS STRONG



Call Shawna Hale or John Watchous at **918.935.2010**

[shale@wigginprop.com](mailto:shale@wigginprop.com) or [jwatchous@wigginprop.com](mailto:jwatchous@wigginprop.com) | [wigginprop.com](http://wigginprop.com)

This material is provided for information purposes only. It is from sources believed to be reliable. However, Wiggin Properties makes no warranties or representations, expressed or implied, as to the accuracy or sufficiency of the information. It is presented subject to errors, omissions, changes or withdrawal without notice. Square footage is provided by the local County Assessor or the Owner. Photos and graphics with copyrights by Costar, Google, Wiggin Properties and independent contractors are used with permission.