

WORK. PLAY. THRIVE. OFFICES AT PEAK TIME

1515 S CLARKSON STREET, CHARLOTTE, NC 28208



Nick Wiley

(704) 315-5058
nickwiley@kw.com

Zhengzheng (ZZ) Wiley

(704) 412-3059
zwiley@kw.com



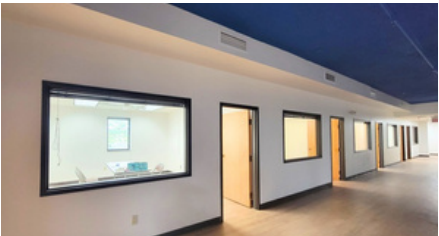
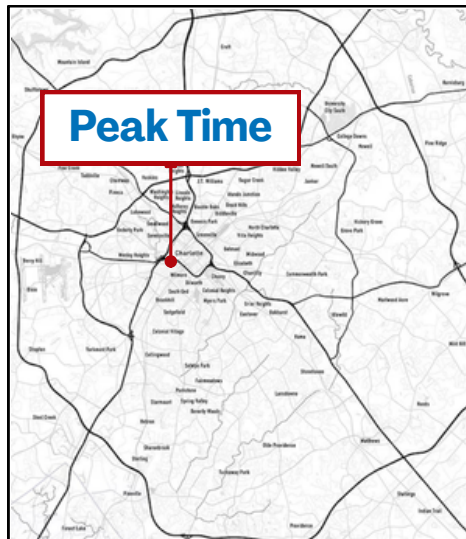
**OFFICE
FOR
LEASE**

Available Spaces: ±9,286 SF
10 offices, 4 large suites

Secure Your Office at **Peak Time**

The Peak Time Advantage 

- Unmatched Location
- Amenity-Rich
- Thriving Community
- Easy Access
- Flexible Options



-  High Speed WIFI
-  16 Pickleball Courts
-  Onsite Bar & Lounge
-  Conference Room
-  Fully Equipped Gym
-  Luxurious Sauna
-  Golf Simulator
-  Free Onsite Parking
-  Modern Security System

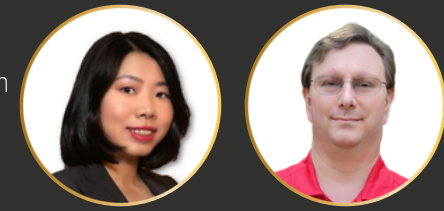
Work Where You Play

Nick Wiley

(704) 315-5058 | niickwiley@kw.com

Zhengzheng (ZZ) Wiley

(704) 412-3059 | zwiley@kw.com



Elevate your business to a new level by situating it within a dynamic and high-energy environment. The Offices at **Peak Time** offer an unparalleled leasing opportunity for businesses seeking a unique, amenity-rich location.

Our professional office suites are integrated into a state-of-the-art recreation facility with pickleball courts, providing an inspiring and productive workspace with a lifestyle component unlike any other.



Imagine a work environment where your team can enjoy access to a cutting-edge sports complex and networking opportunities with other professionals. **This multi-use complex fosters a sense of community and well-being, attracting a diverse mix of tenants.**

Sports & Recreation at Peak Time

Nick Wiley

(704) 315-5058 | niickwiley@kw.com

Zhengzheng (ZZ) Wiley

(704) 412-3059 | zwiley@kw.com



Tenants enjoy direct access to one of Charlotte's most exciting new recreation destinations. **Peak Time** features:

- 16 pickleball courts
- Fully equipped gym
- Golf Simulator

These world-class facilities provide the perfect balance of work and play—offering your team opportunities for recreation, team-building, and wellness just steps from the office.



**PEAK SQUARE
(food truck & bar)**



THE COURTS



**KITCHENETTE
BREAK ROOM**



PEAK BAR & LOUNGE



**THE OFFICES AT
PEAK TIME**



Social Spaces & After-Work Lifestyle

activity, and success.

Nick Wiley
(704) 315-5058 | niickwiley@kw.com

Zhengzheng (ZZ) Wiley
(704) 412-3059 | zwiley@kw.com



LOUNGE



Peak Time goes beyond the traditional office by offering built-in opportunities to unwind, connect, and recharge. An outdoor area hosts food trucks and a mobile bar for events, while the indoor lounge bar creates the perfect setting for casual gatherings, coworking or client entertainment.

For tenants, the experience doesn't stop when the workday ends. Teams can enjoy a game on the courts, then transition into a vibrant social atmosphere with food, drinks, and conversation—all without leaving the complex.

This unique blend of work, play, and social interaction makes **Peak Time** especially appealing to today's workforce. Companies gain a competitive edge in attracting and retaining top talent, who value environments that support both career growth and lifestyle balance.



The Peak Time Advantage

Nick Wiley

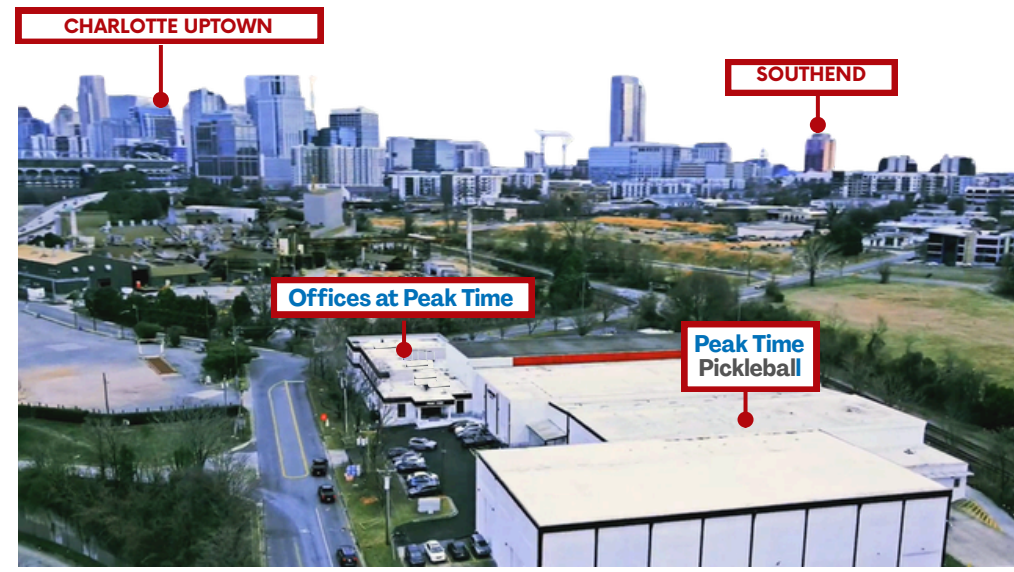
(704) 315-5058 | niickwiley@kw.com

Zhengzheng (ZZ) Wiley

(704) 412-3059 | zwiley@kw.com



- **Unmatched Location:** Offices within a premier sports and recreation complex
- **Amenity-Rich:** Full-service athletic courts, fully equipped kitchenette and a bar
- **Thriving Community:** Diverse tenant mix fostering collaboration and synergy
- **Easy Access:** Generous parking and convenient connectivity to major highways
- **Flexible Options:** Multiple office sizes and configurations to fit your business



Flexible Leasing Options

activity, and success.

Nick Wiley

(704) 315-5058 | niickwiley@kw.com

Zhengzheng (ZZ) Wiley

(704) 412-3059 | zwiley@kw.com



Leasing options are flexible, with spaces available to suit a variety of business needs and sizes. Each office is designed for productivity and comfort, offering professional finishes and ample natural light. The complex provides generous parking, easy access to major roadways, and a secure environment.

Whether you're seeking a single private office or a larger team suite, these spaces can be tailored to meet your operational needs.

Office Leasable Area: $\pm 9,286$ SF

First Floor: $\pm 5,000$ SF with 10 offices, including 2 suites

Second Floor: $\pm 4,286$ SF with 3 large, divisible suites

This is more than just an office; it's a strategic move for your business, offering a competitive advantage in recruitment and client appeal. Join a community that values health, activity, and success.



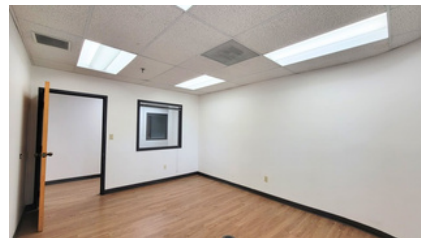
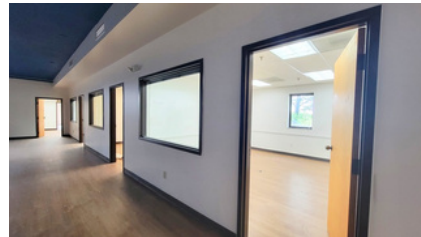
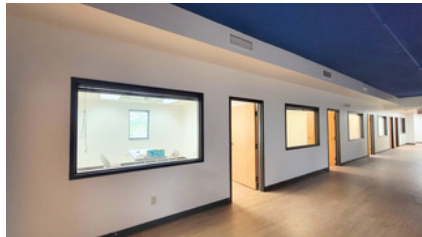
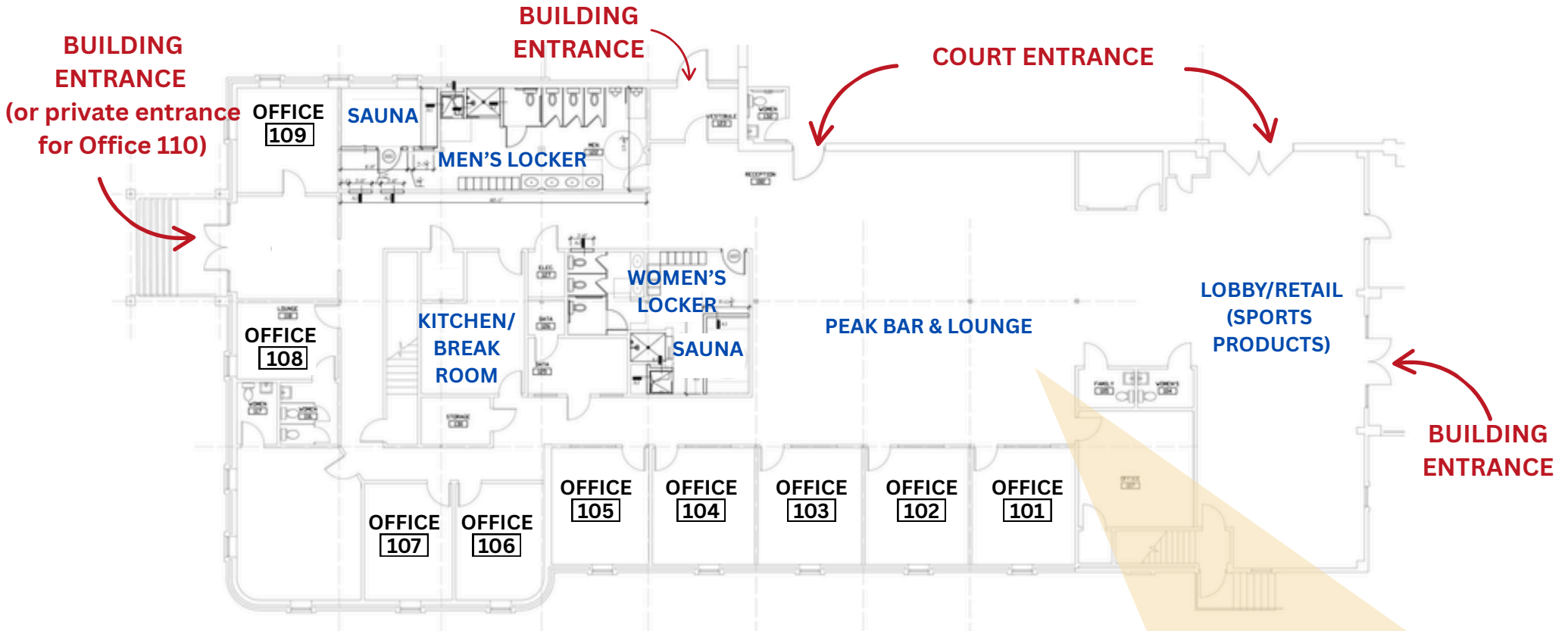
The Offices at Peak Time (1st Floor)

Nick Wiley

(704) 315-5058 | niickwiley@kw.com

Zhengzheng (ZZ) Wiley

(704) 412-3059 | zwiley@kw.com



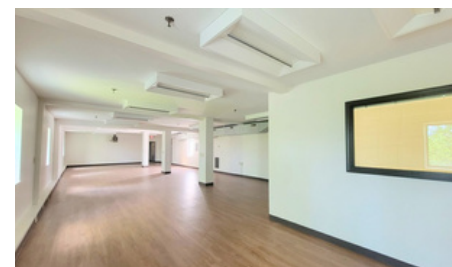
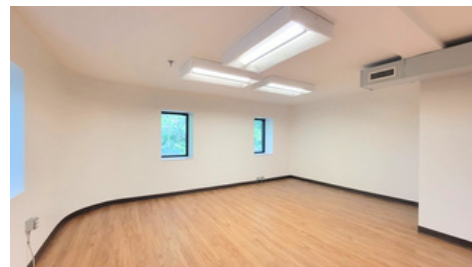
The Offices at Peak Time (2nd Floor)

Nick Wiley

(704) 315-5058 | niickwiley@kw.com

Zhengzheng (ZZ) Wiley

(704) 412-3059 | zwiley@kw.com



A Prime Location

Nick Wiley

(704) 315-5058 | niickwiley@kw.com

Zhengzheng (ZZ) Wiley

(704) 412-3059 | zwiley@kw.com



Peak Time Pickleball
1515 S CLARKSON ST

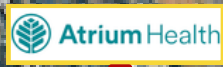


Honeywell

Grant Thornton



Edward Jones



Big City Benefits

Nick Wiley

(704) 315-5058 | niickwiley@kw.com

Zhengzheng (ZZ) Wiley

(704) 412-3059 | zwiley@kw.com



Leasing an office near Uptown Charlotte places your business at the center of the city's economic and cultural hub.



With immediate access to major highways, light rail, and public transit, commuting is simple for both employees and clients.

You'll be surrounded by Charlotte's top dining, entertainment, and hospitality options, making it easy to host meetings or impress visitors.



Being near Uptown connects you with major corporations and startups, opening doors to collaboration and growth.