



**SAUGATUCK
COMMERCIAL**
REAL ESTATE LLC

LICENSED IN CT, NY, MA, RI, NH, FL

**MEDICAL & PROFESSIONAL OFFICE
WESTPORT, CT**

NEW OWNERSHIP...BEAUTIFUL UPGRADES

728 POST ROAD EAST



**MEDICAL &
PROFESSIONAL
OFFICE BUILDING**

**1,858 RSF
1ST FLOOR**

**1,375 + 2,517 RSF
2ND FLOOR**



- Two-story medical office building located on Route 1/Post Road East in Westport.
- Excellent visibility and easy access; ADT (average daily traffic) over 22,000.
- Close to downtown Westport's Main Street retail shops, restaurants and other amenities.
- Minutes to I-95, exit 18.
- Covered and surface parking for staff and visitors.

Demographics	1 Mile	3 Mile	5 Mile
Population	5,661	35,662	114,732
Average HHI	\$367,567	\$301,964	\$212,219
Adj. Daytime	8,881	46,728	146,534

EXCLUSIVE LEASING AGENTS
Penny Wickey 203.222.4194
pwickey@saugatuckcommercial.com

Laure Aubuchon 203.349.8485
laubuchon@saugatuckcommercial.com

The foregoing information was furnished to us by sources which we deem reliable, but no warranty or representation is made as to the accuracy thereof. Subject to correction of errors, omissions, change of price, prior sale or withdrawal from market without notice.



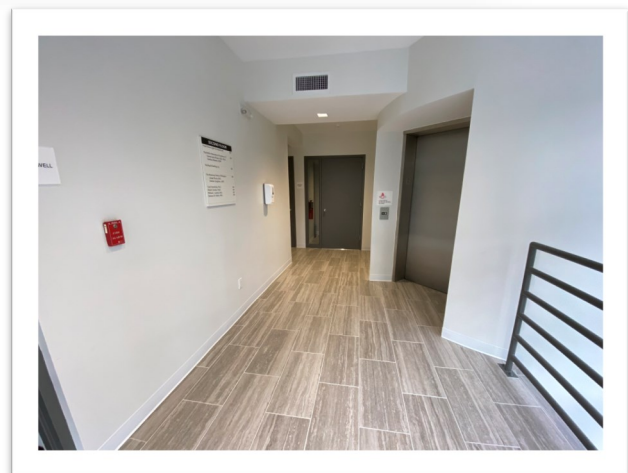
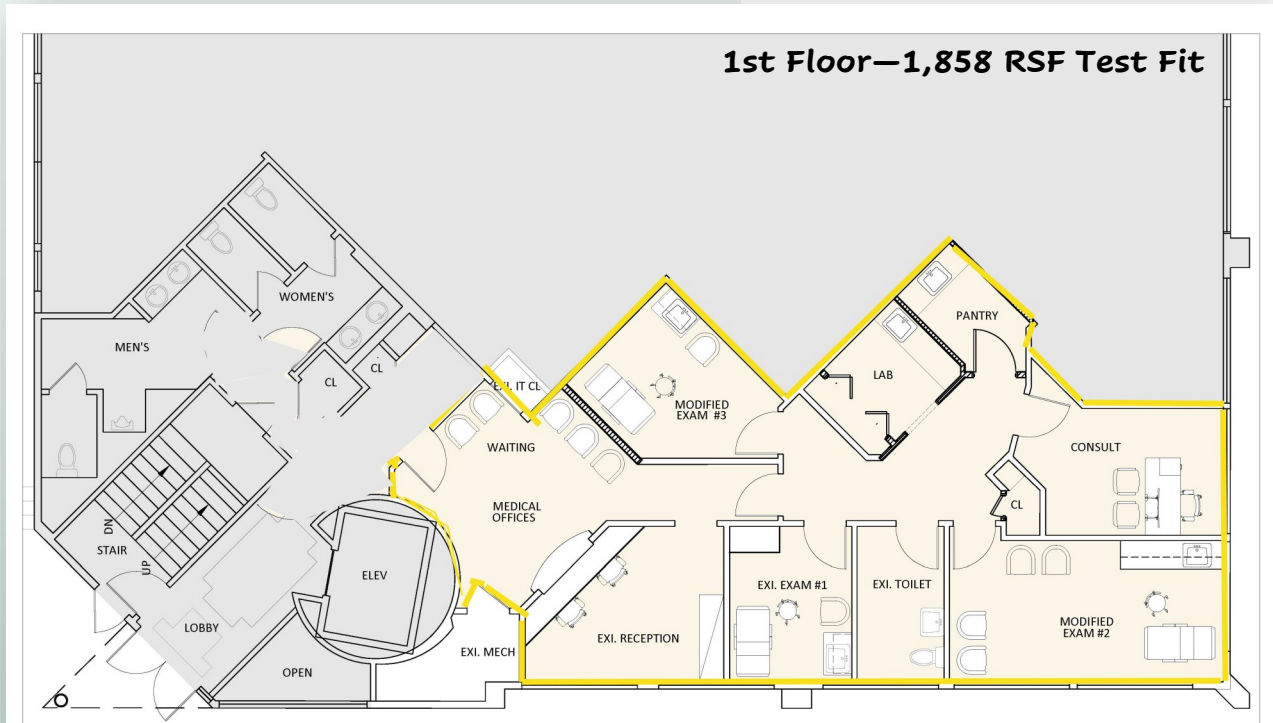
**SAUGATUCK
COMMERCIAL**
REAL ESTATE LLC

LICENSED IN CT, NY, MA, RI, NH, FL

**MEDICAL & PROFESSIONAL OFFICE
WESTPORT, CT**

NEW OWNERSHIP...BEAUTIFUL UPGRADES

728 POST ROAD EAST



EXCLUSIVE LEASING AGENTS
 Penny Wickey 203.222.4194
 pwickey@saugatuckcommercial.com
 Laure Aubuchon 203.349.8485
 laubuchon@saugatuckcommercial.com

The foregoing information was furnished to us by sources which we deem reliable, but no warranty or representation is made as to the accuracy thereof. Subject to correction of errors, omissions, change of price, prior sale or withdrawal from market without notice.



**SAUGATUCK
COMMERCIAL**
REAL ESTATE LLC

LICENSED IN CT, NY, MA, RI, NH, FL

**MEDICAL & PROFESSIONAL OFFICE
WESTPORT, CT**

NEW OWNERSHIP...BEAUTIFUL UPGRADES

728 POST ROAD EAST



EXCLUSIVE LEASING AGENTS
 Penny Wickey 203.222.4194
 pwickey@saugatuckcommercial.com
 Laure Aubuchon 203.349.8485
 laubuchon@saugatuckcommercial.com

The foregoing information was furnished to us by sources which we deem reliable, but no warranty or representation is made as to the accuracy thereof. Subject to correction of errors, omissions, change of price, prior sale or withdrawal from market without notice.