



CARBON BEACH BUNGALOWS

PACIFIC COAST HIGHWAY

cag | COMMERCIAL
ASSET GROUP

NEWMARK

DANIEL CHIPRUT
Executive Vice President
t 310-800-7955
daniel@cag-re.com
CA RE Lic. #01808709
danielchiprut.com

JAY LUCHS
Vice Chairman
t 310-407-6585
jay.luchs@nmrk.com
CA RE Lic. #01260345
jayluchs.com

STEVEN SALAS
Senior Managing Director
t 310-407-6569
steven.salas@nmrk.com
CA RE Lic. #1232955



SPACES FOR LEASE



ADDRESS

22221, 22223, & 22225
Pacific Coast Highway
Malibu, CA 90265



TYPE OF USE

Retail/Office/Therapy



AVAILABLE SPACE

±675 - ±2,025 SF



RATE

\$4.75 PSF per month MG



TERM

3 - 5 Years



ANNUAL INCREASES

3.5%

CARBON BEACH BUNGALOWS

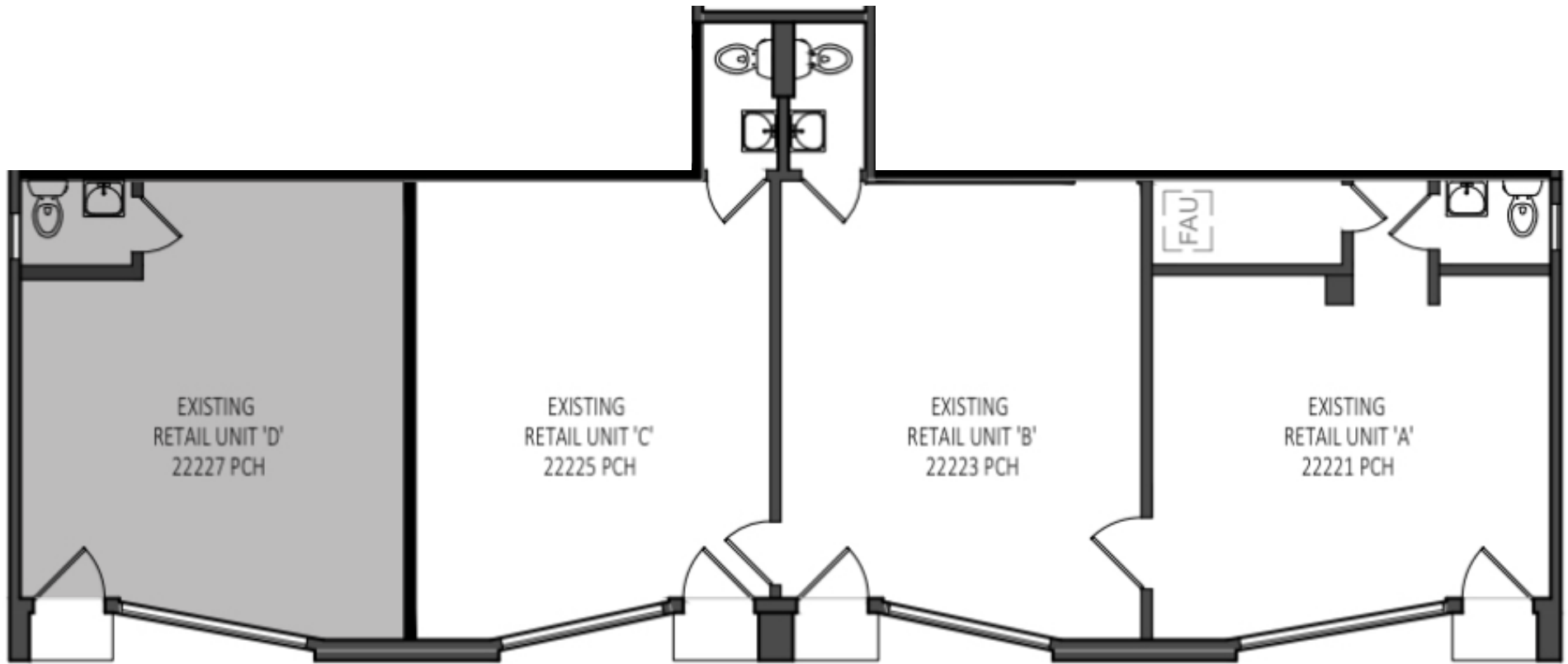
PACIFIC COAST HIGHWAY



DANIEL CHIPRUT
Executive Vice President
t 310-800-7955
daniel@cag-re.com
CA RE Lic. #01808709
danielchiprut.com

JAY LUCHS
Vice Chairman
t 310-407-6585
jay.luchs@nmrk.com
CA RE Lic. #01260345
jayluchs.com

STEVEN SALAS
Senior Managing Director
t 310-407-6569
steven.salas@nmrk.com
CA RE Lic. #1232955



PACIFIC COAST HIGHWAY

CARBON BEACH BUNGALOWS

PACIFIC COAST HIGHWAY

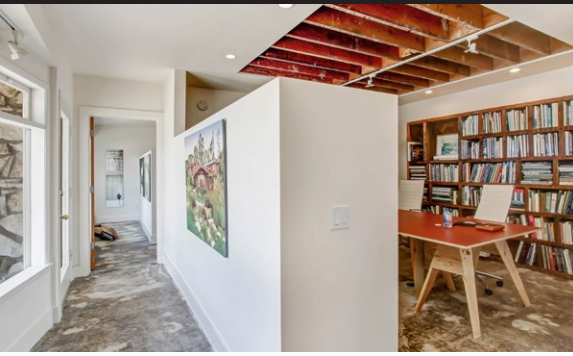


DANIEL CHIPRUT
Executive Vice President
t 310-800-7955
daniel@cag-re.com
CA RE Lic. #01808709
danielchiprut.com



JAY LUCHS
Vice Chairman
t 310-407-6585
jay.luchs@nmrk.com
CA RE Lic. #01260345
jayluchs.com

STEVEN SALAS
Senior Managing Director
t 310-407-6569
steven.salas@nmrk.com
CA RE Lic. #1232955



CARBON BEACH BUNGALOWS

PACIFIC COAST HIGHWAY

cag | COMMERCIAL ASSET GROUP

NEWMARK

DANIEL CHIPRUT
Executive Vice President
t 310-800-7955
daniel@cag-re.com
CA RE Lic. #01808709
danielchiprut.com

JAY LUCHS
Vice Chairman
t 310-407-6585
jay.luchs@nmrk.com
CA RE Lic. #01260345
jayluchs.com

STEVEN SALAS
Senior Managing Director
t 310-407-6569
steven.salas@nmrk.com
CA RE Lic. #1232955



CARBON BEACH BUNGALOWS

PACIFIC COAST HIGHWAY

CARBON BEACH BUNGALOWS
— PACIFIC COAST HIGHWAY

MALIBU COUNTRY MART
JOHN VARVATOS
VINCE
CHROME HEARTS
LUCKY'S STEAKHOUSE
TAVERNA TONY
SUNLIFE ORGANICS
ALFRED COFFEE
AND MORE

ADAMSON HOUSE

MALIBU VILLAGE
FRED SEGAL
BROAD STREET OYSTER CO.
MARMALADE CAFE
LULULEMON ATHLETICA
MARINE LAYER
SEPHORA
SAJE WELLNESS
ZADIG & VOLTAIRE
AND MORE

MALIBU LUMBER YARD
JAMES PERSE
CAFE HABANA

MALIBU FARM
PIER CAFE

MALIBU BEACH INN

NOBU RYOKAN MALIBU

LITTLE BEACH
HOUSE MALIBU

NOBU MALIBU

PACIFIC COAST GREENS
D'AMORE'S PIZZA

MALIBU SANDS
NICOLAS EATERY
CAFFE LUXXE

DUKE'S MALIBU
MOONSHADOWS
THE REEL INN
GLADSTONE'S
MASTRO'S OCEAN CLUB



DANIEL CHIPRUT
Executive Vice President
t 310-800-7955
daniel@cag-re.com
CA RE Lic. #01808709
danielchiprut.com



JAY LUCHS
Vice Chairman
t 310-407-6585
jay.luchs@nmrk.com
CA RE Lic. #01260345
jayluchs.com

STEVEN SALAS
Senior Managing Director
t 310-407-6569
steven.salas@nmrk.com
CA RE Lic. #1232955



The information contained herein has been obtained from sources deemed reliable but has not been verified and no guarantee, warranty or representation, either express or implied, is made with respect to such information. Terms of sale or lease and availability are subject to change or withdrawal without notice.

CARBON BEACH BUNGALOWS

PACIFIC COAST HIGHWAY

cag | COMMERCIAL
ASSET GROUP

CORPORATE RE LICENSE #01876070

DANIEL CHIPRUT
Executive Vice President
t 310-800-7955
daniel@cag-re.com
CA RE Lic. #01808709
danielchiprut.com

NEWMARK

CORPORATE RE LICENSE #01355491

JAY LUCHS
Vice Chairman
t 310-407-6585
jay.luchs@nmrk.com
CA RE Lic. #01260345
jayluchs.com

STEVEN SALAS
Senior Managing Director
t 310-407-6569
steven.salas@nmrk.com
CA RE Lic. #1232955