

POWERLINE COMMERCE PARK

2105-2177 N POWERLINE ROAD, POMPANO BEACH, FL 33069

PROPERTY SUMMARY

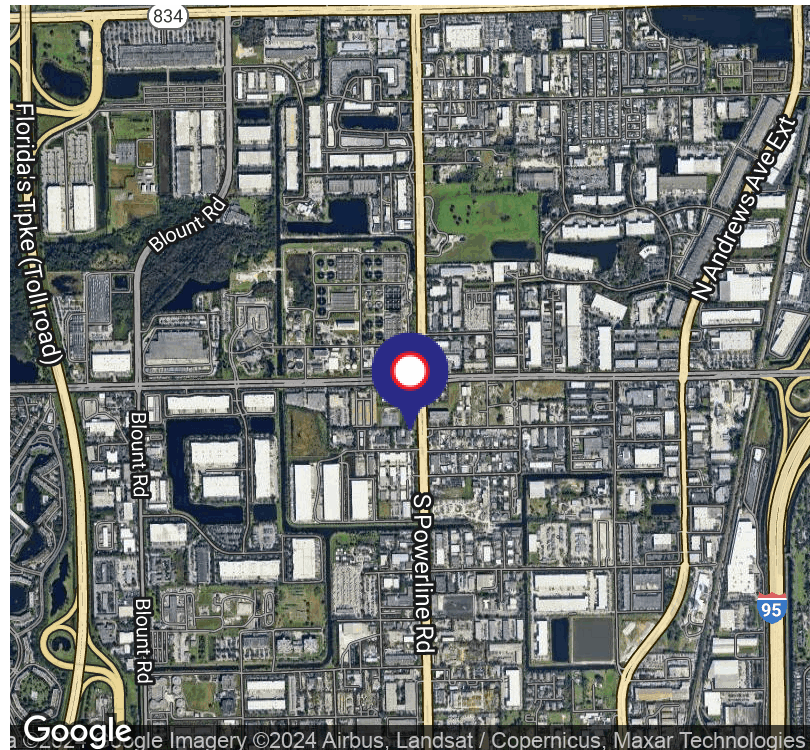


PROPERTY DESCRIPTION

The Powerline Commerce Park is a 23,900 square foot small bay warehouse property and is located 1.5 miles west of the I-95 Expressway and 3 miles east of the Florida Turnpike. The property was built in 2002 and has frontage on Powerline Road near the intersection of Copans Road. The building has 20 foot tall ceilings, 3-phase electric heavy power availability, and hurricane impact upgrades. The roof is Twin-T concrete construction, and the unit sizes range from 1,200 square feet up to 2,700 square feet with office buildouts ranging from 20-30%. All the warehouse units are air conditioned and have grade level overhead doors. The property is zoned I-1 for Light Industrial.

PROPERTY HIGHLIGHTS

- 100% Air-conditioned office/showrooms
- 20' Clear ceiling height
- Hurricane impact glass
- 1 mile west of I-95
- Frontage on Powerline Road



JAN STOLOW

Director of Property Management and Leasing
Direct: 954.491.5505 | Cell: 954.658.4479
jan@levyrai.com

JOSH LEVY

Chief Operating Officer
954.491.5505
josh@levyrai.com



FOR LEASE

POWERLINE COMMERCE PARK

2105-2177 N POWERLINE ROAD, POMPANO BEACH, FL 33069

ADDITIONAL PHOTOS



JAN STOLOW

Director of Property Management and Leasing
Direct: 954.491.5505 | Cell: 954.658.4479
jan@levyrai.com

JOSH LEVY

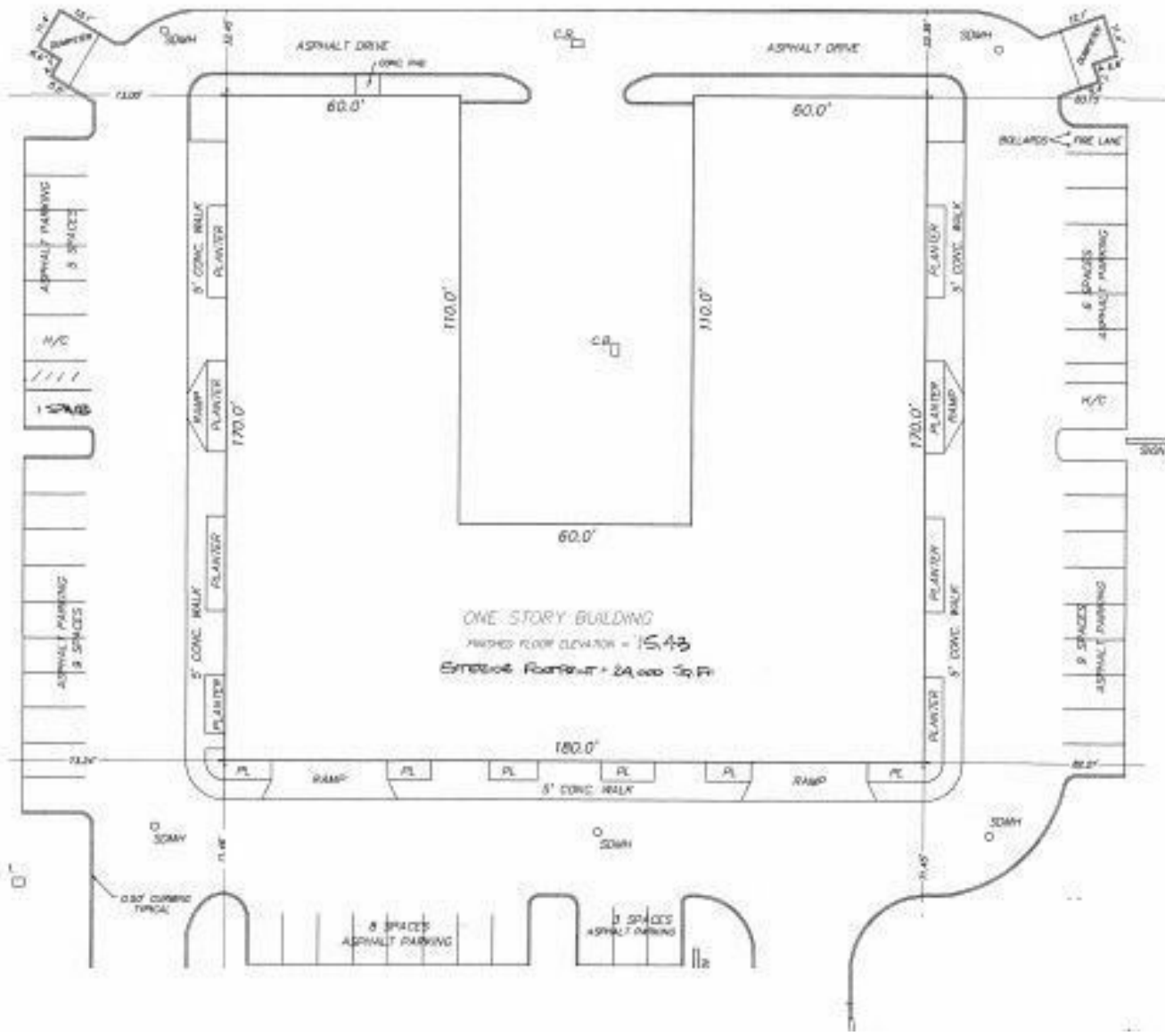
Chief Operating Officer
954.491.5505
josh@levyrai.com



POWERLINE COMMERCE PARK

2105-2177 N POWERLINE ROAD, POMPANO BEACH, FL 33069

SITE PLAN



JAN STOLOW

Director of Property Management and Leasing
Direct: 954.491.5505 | Cell: 954.658.4479
jan@levyrai.com

JOSH LEVY

Chief Operating Officer
954.491.5505
josh@levyrai.com

