

Southport Business Center

1469-1499 SW MARKET STREET, LEE'S SUMMIT, MISSOURI

Property Highlights

- Office or retail space available
- Recently remodeled business center
- Adjacent to Oldham Village mixed-use development featuring Costco, Q39 barbecue restaurant, Chick-fil-A and Starbucks
- Great visibility and highway access
- Over 43,000 cars-per-day on 291 Highway
- Lease rate starting at \$15.00- \$16.00/sf, NNN



For Lease

1,325 and 3,000 (±) sf Available March 1, 2026

NEWMARK
ZIMMER

Michael L. VanBuskirk, SIOR, CCIM, CRE

Vice Chairman, Principal

t 816-512-1010

mvanbuskirk@nzimmer.com

Bernell K. Rice

Vice President, Sales and Leasing

t 816-268-4225

brice@nzimmer.com

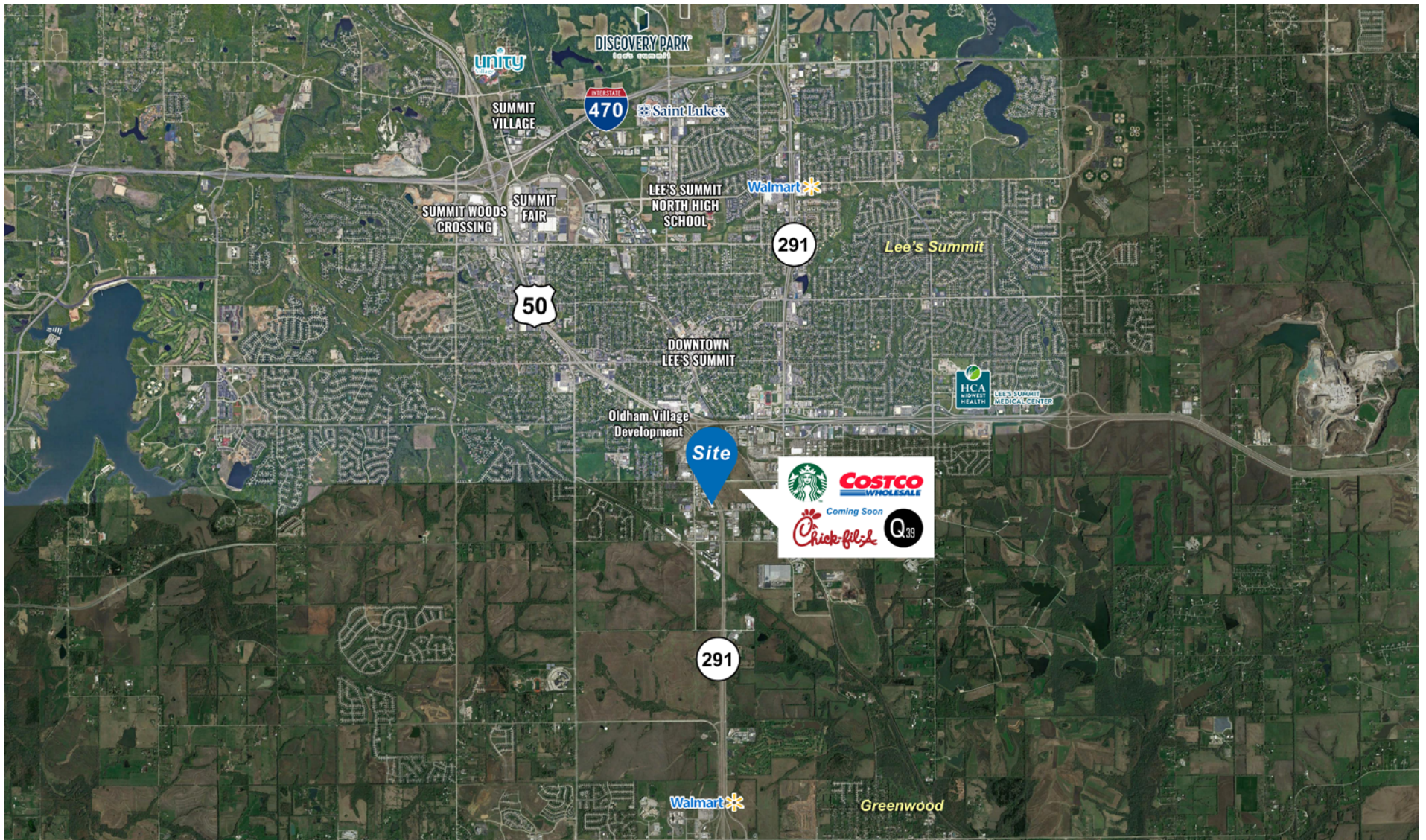


nmrkzimmer.com

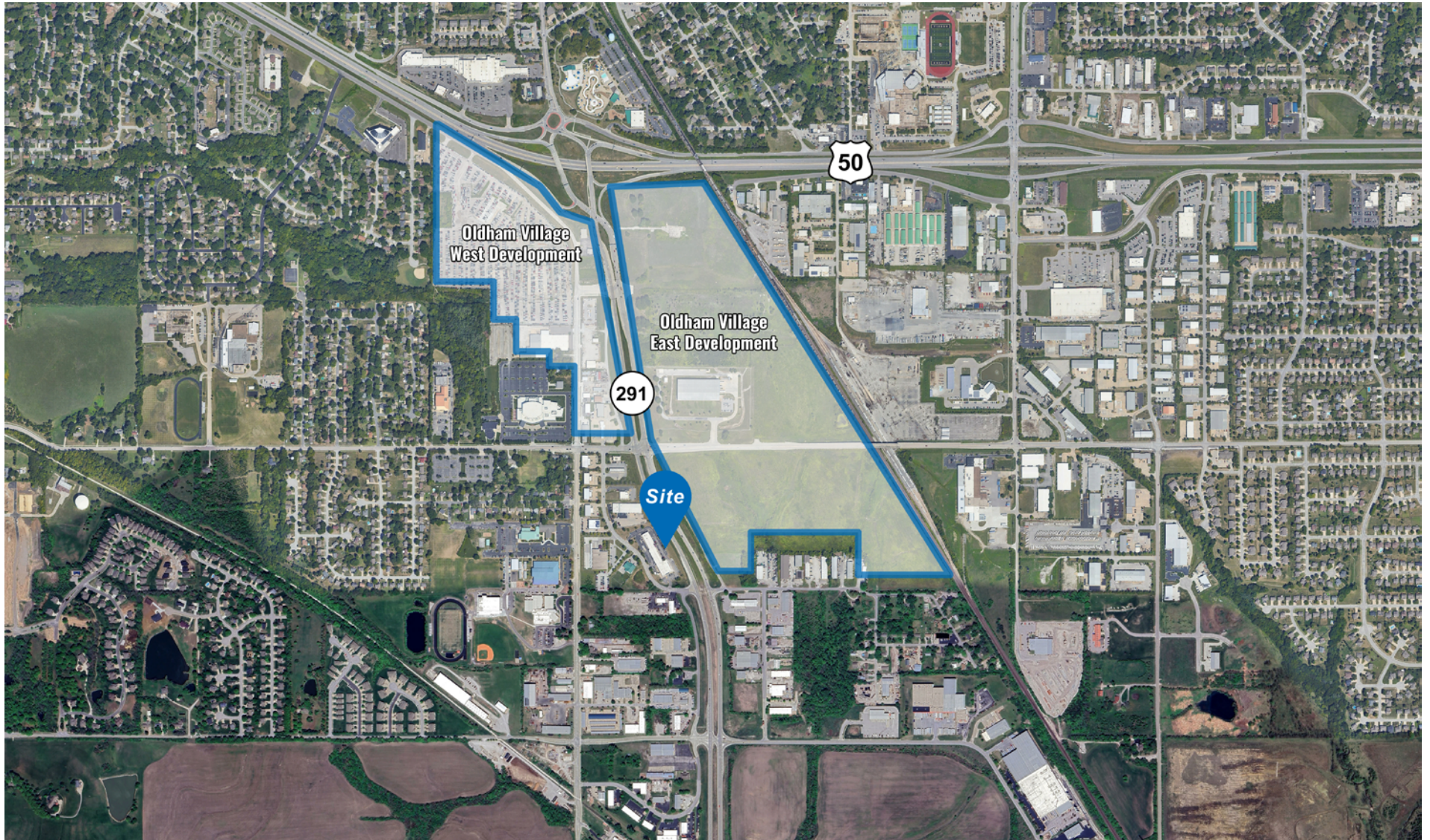
1220 Washington Street, Suite 300
Kansas City, MO 64105

SOUTHPORT BUSINESS CENTER

Property Aerial



Property Aerial

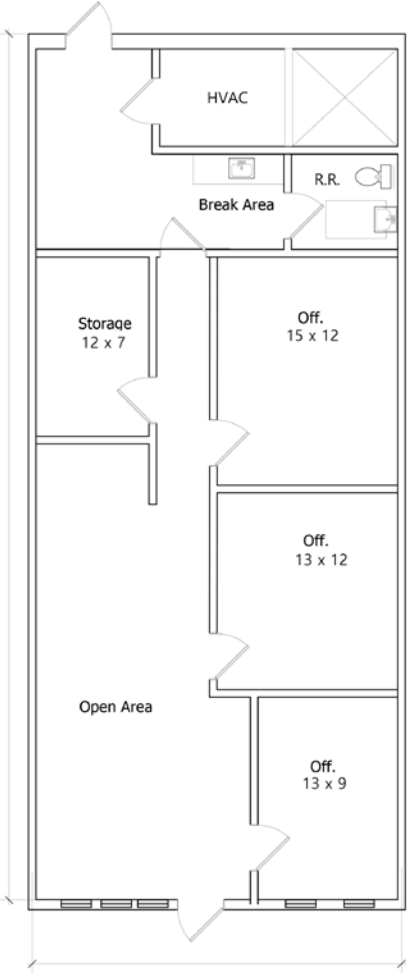


Oldham Village Development Aerial Rendering

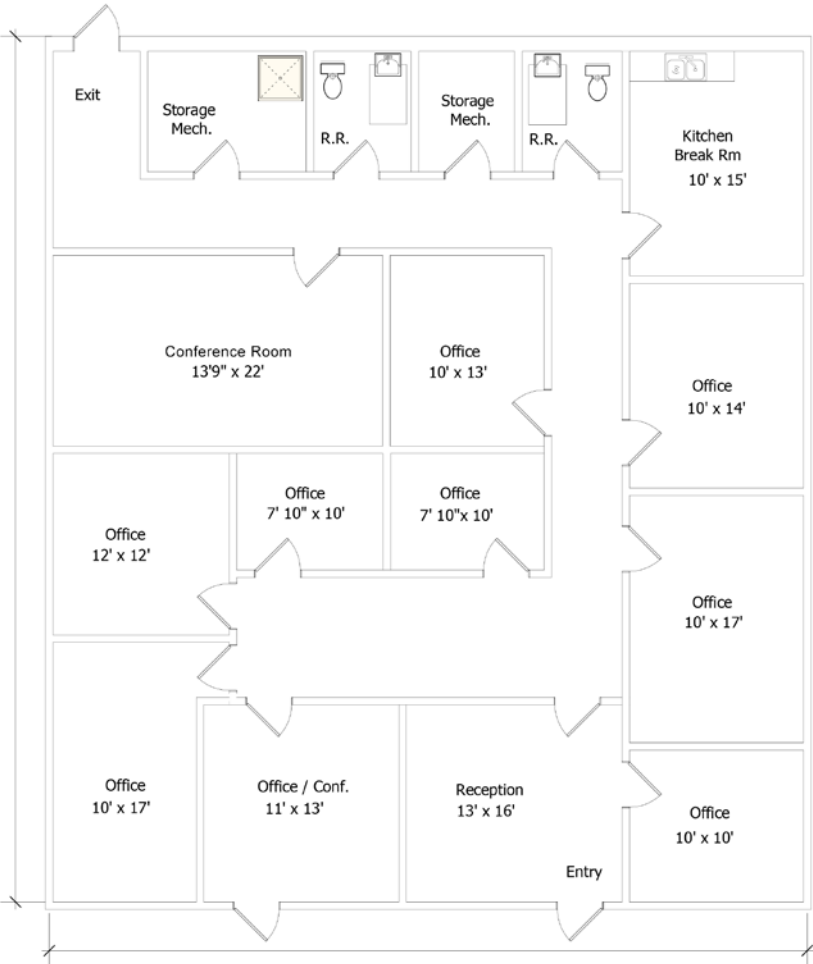


Floor Plans

Suite 1483 - 1,325 (±) sf



Suite 1485 - 3,000 (±) sf



SOUTHPORT BUSINESS CENTER

Lee's Summit is a thriving community with a diverse and robust economic base. Lee's Summit offers award-winning schools, workforce and training programs, diverse housing and access to an array of community lifestyle amenities.

Lee's Summit is a convenient 25 minute drive to downtown Kansas City, offering easy access to city amenities without the clutter of city traffic.



Lee's Summit is the fifth-largest city in the state with 65 square miles of land, yet the city has plenty of room to grow. Recently-annexed properties in strategic locations are served by two interstates (I-470 and I-70) and two federal highways (U.S. 50 and U.S. 71). Lee's Summit is accessible to 85 percent of U.S. markets within two days.

Lee's Summit consistently ranks on Money's Best Places to Live, thanks to a diverse array of housing options, an award-winning K-12 school district and the pedestrian-friendly, historic Downtown Lee's Summit. The downtown Lee's Summit Main Street won a "Great American Main Street" award in 2010 by the National Trust for Historic Preservation. Additionally, residents enjoy access to a comprehensive park and trail system and Longview Lake recreation area.

Demographics

	ONE-MILE	THREE-MILE	FIVE-MILE
2000 Population	2,161	41,894	67,466
2010 Population	2,362	48,677	85,199
2021 Population	2,415	51,643	93,700
2026 Population	2,464	53,320	98,273
2021 Median Age	39.2	38.1	38.5
2000 Households	826	16,669	25,090
2010 Households	942	19,341	31,918
2021 Total Households	975	20,583	35,147
2026 Total Households	998	21,244	36,808
2021 Average Household Size	2.43	2.49	2.65
2021 Median Household Income	\$76,766	\$79,992	\$92,630
2026 Median Household Income	\$82,510	\$85,895	\$100,856
2021 Average Household Income	\$91,822	\$94,472	\$109,987
2026 Average Household Income	\$102,687	\$105,880	\$123,155
2021 Per Capita Income	\$36,177	\$37,542	\$41,252
2026 Per Capita Income	\$40,542	\$42,057	\$46,121
2000 Total Housing Units	852	17,297	25,927
2010 Total Housing Units	1,044	20,803	33,968
2021 Total Housing Units	1,076	22,293	37,544
2026 Total Housing Units	1,100	22,999	39,243