

COMMERCIAL OFFICE AND LAND LOT FOR LEASE

2735 ALLEN HILL AVE
Melbourne, FL 32940



- Allen Hill Ave and US 1
- Just North of the Pineda Causeway
- Turn Lane from Northbound US 1
- 1,052 SF House Converted to Office w/Garage and Large Lot for Exterior Storage
- Approximately 0.64 Acres
- Ideal Site for a Variety of Users with Outdoor Storage Needs for Materials or Trucks and Equipment
- \$3,500 Per Month for Office w/ Garage & Lot



JMREALESTATE.COM

Nicole Reed

JM Real Estate, Inc.

Office: 321.242.2882 x 201

Cell: 314.795.4339

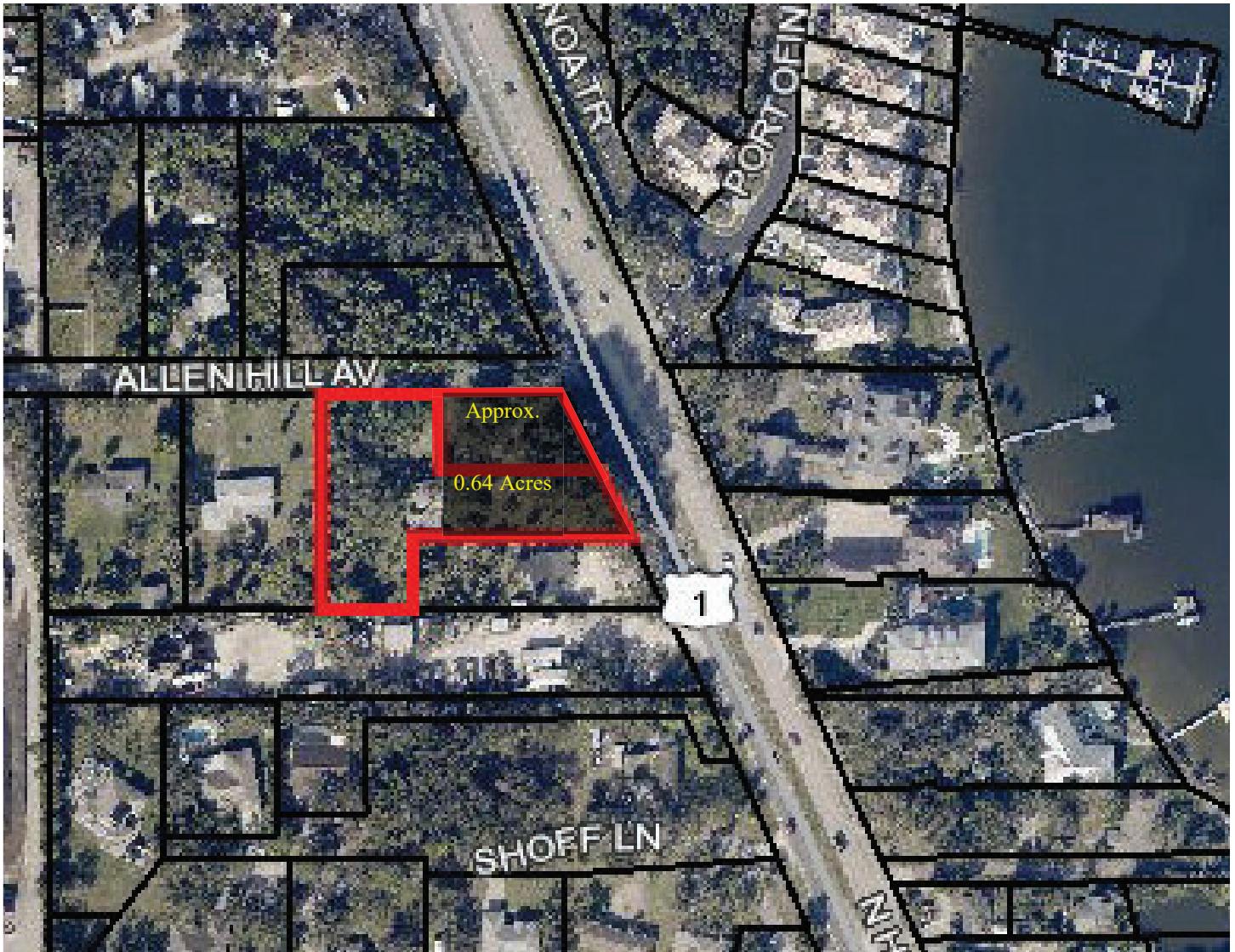
Nicole@JMRealEstate.com

Information contained herein has been obtained from others and is considered to be reliable; however, a prospective purchaser, agent, or lessee is expected to verify all information to their satisfaction. We make no guarantee, warranty, or representations herein. Licensed Real Estate Broker.

COMMERCIAL OFFICE AND LAND LOT FOR LEASE

2735 ALLEN HILL AVE

Melbourne, FL 32940



Approximately 0.64 Acres. 1,052 SF Office with Detached Garage.
Ideal for business with needs for exterior storage and truck parking.



JMREALESTATE.COM

Nicole Reed

JM Real Estate, Inc.

Office: 321.242.2882 x 201

Cell: 314.795.4339

Nicole@JMRealEstate.com

Information contained herein has been obtained from others and is considered to be reliable; however, a prospective purchaser, agent, or lessee is expected to verify all information to their satisfaction. We make no guarantee, warranty, or representations herein. Licensed Real Estate Broker.

COMMERCIAL OFFICE AND LAND LOT FOR LEASE

2735 ALLEN HILL AVE
Melbourne, FL 32940



JMREALESTATE.COM

Nicole Reed

JM Real Estate, Inc.

Office: 321.242.2882 x 201

Cell: 314.795.4339

Nicole@JMRealEstate.com

Information contained herein has been obtained from others and is considered to be reliable; however, a prospective purchaser, agent, or lessee is expected to verify all information to their satisfaction. We make no guarantee, warranty, or representations herein. Licensed Real Estate Broker.

COMMERCIAL OFFICE AND LAND LOT FOR LEASE

2735 ALLEN HILL AVE
Melbourne, FL 32940



JMREALESTATE.COM

Nicole Reed

JM Real Estate, Inc.

Office: 321.242.2882 x 201

Cell: 314.795.4339

Nicole@JMRealEstate.com

Information contained herein has been obtained from others and is considered to be reliable; however, a prospective purchaser, agent, or lessee is expected to verify all information to their satisfaction. We make no guarantee, warranty, or representations herein. Licensed Real Estate Broker.

COMMERCIAL OFFICE AND LAND LOT FOR LEASE

2735 ALLEN HILL AVE
Melbourne, FL 32940



JMREALESTATE.COM

Nicole Reed

JM Real Estate, Inc.

Office: 321.242.2882 x 201

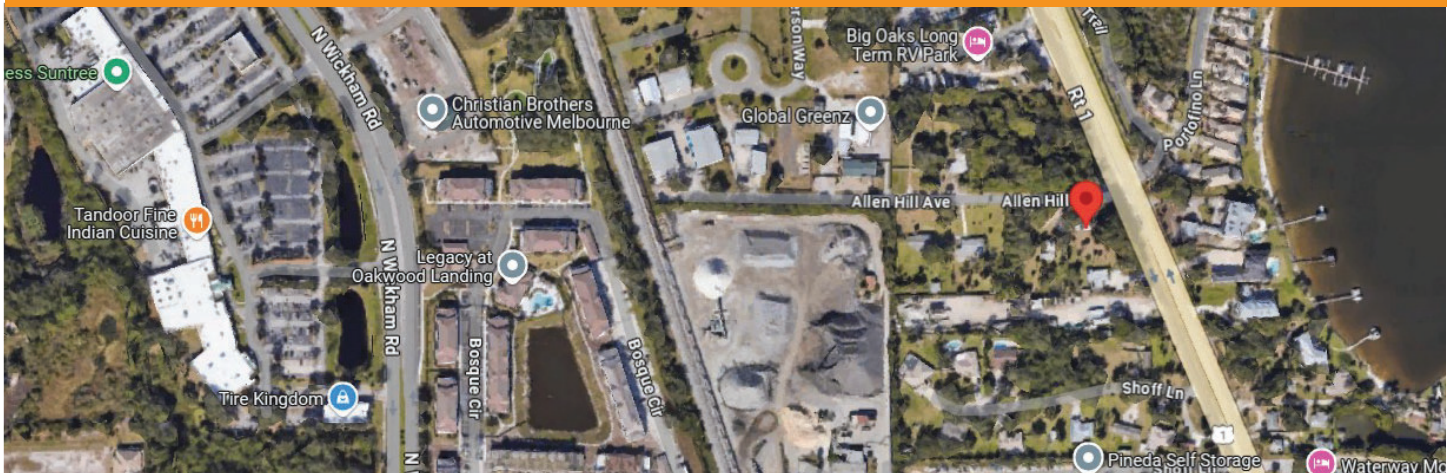
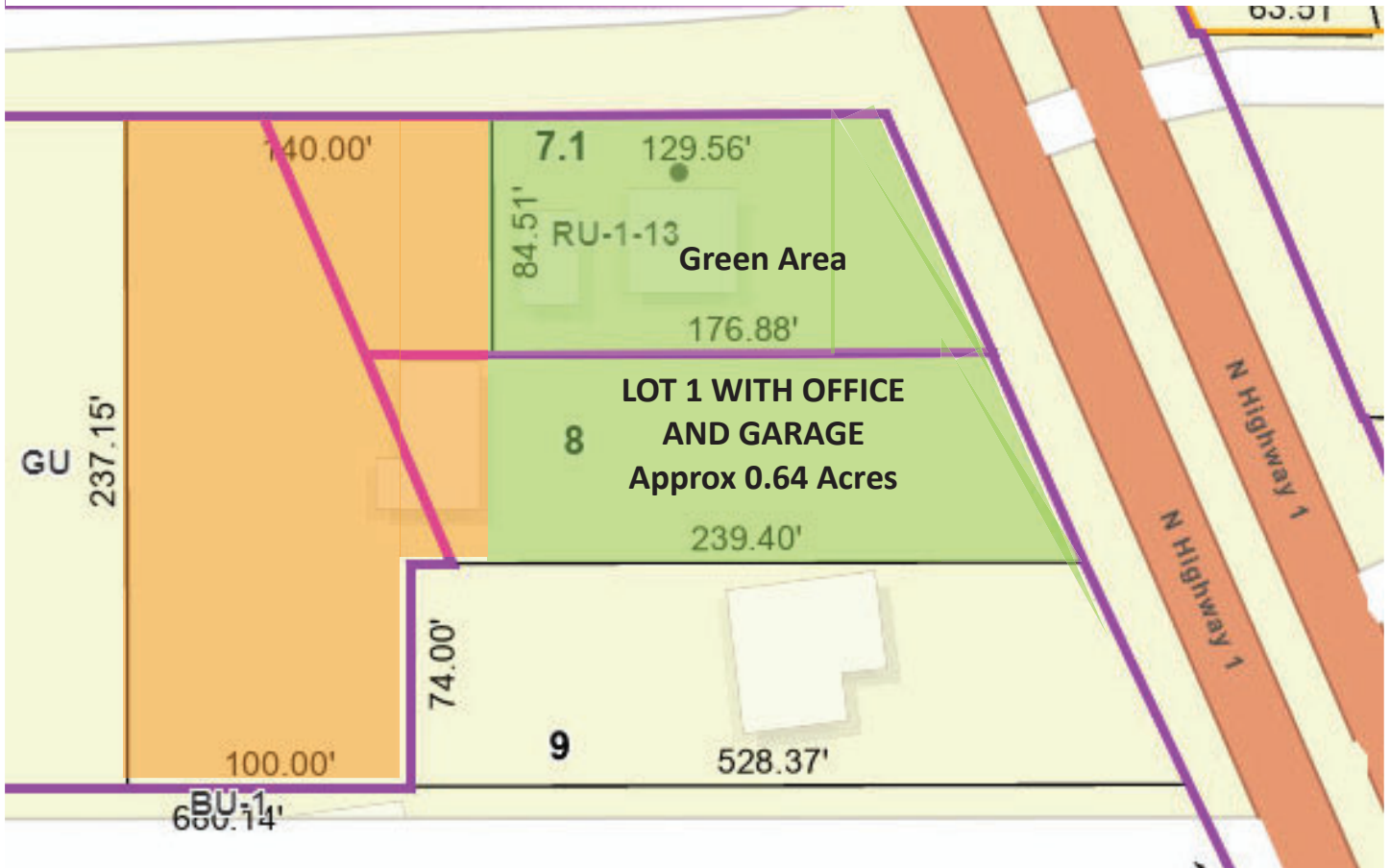
Cell: 314.795.4339

Nicole@JMRealEstate.com

Information contained herein has been obtained from others and is considered to be reliable; however, a prospective purchaser, agent, or lessee is expected to verify all information to their satisfaction. We make no guarantee, warranty, or representations herein. Licensed Real Estate Broker.

COMMERCIAL OFFICE AND LAND LOT FOR LEASE

2735 ALLEN HILL AVE
Melbourne, FL 32940



JMREALESTATE.COM

Nicole Reed

JM Real Estate, Inc.

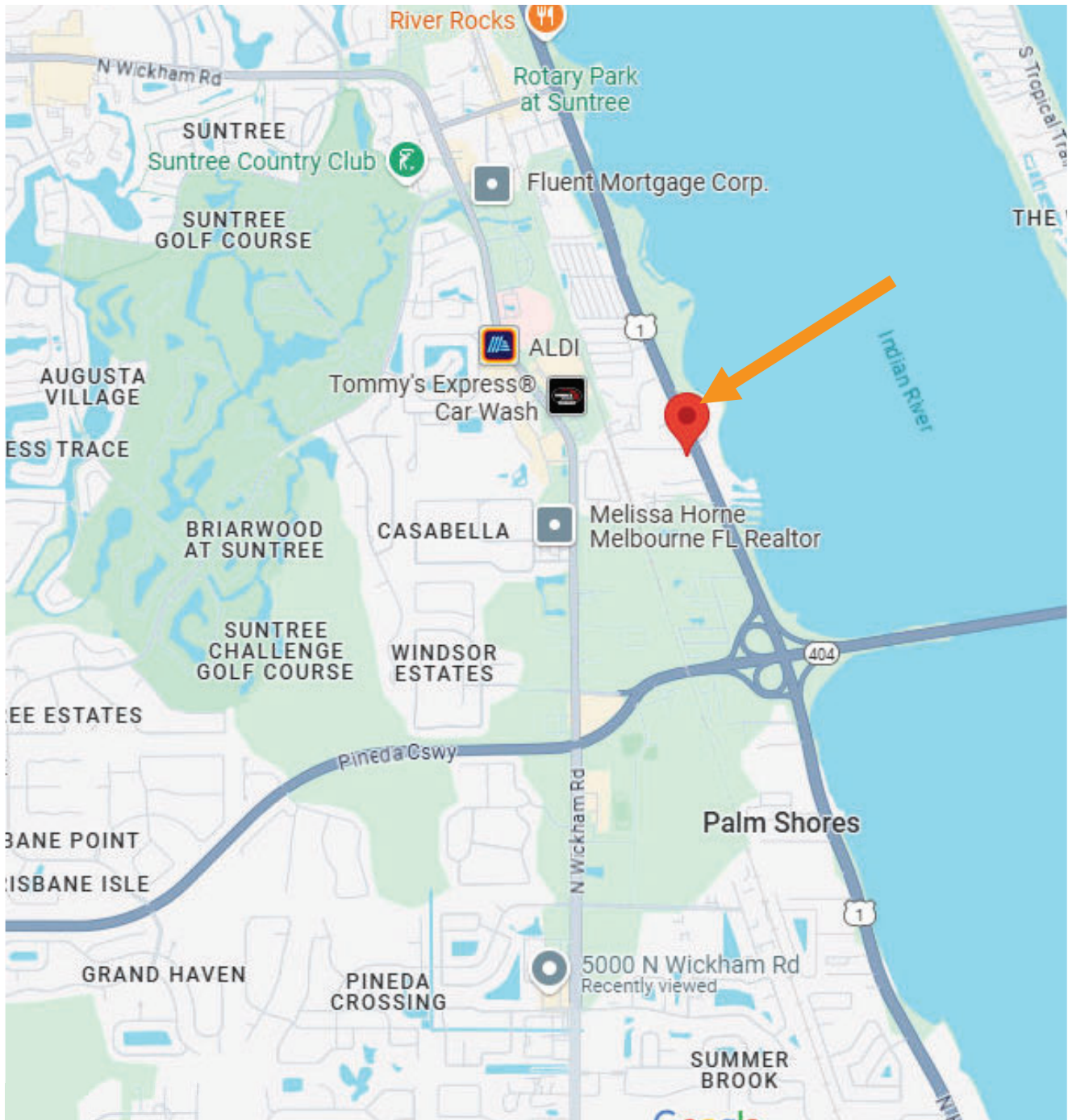
Office: 321.242.2882 x 201

Cell: 314.795.4339

Nicole@JMRealEstate.com

COMMERCIAL OFFICE AND LAND LOTS FOR LEASE

2735 ALLEN HILL AVE
Melbourne, FL 32940



JMREALESTATE.COM

Nicole Reed

JM Real Estate, Inc.

Office: 321.242.2882 x 201

Cell: 314.795.4339

Nicole@JMRealEstate.com