

# 5245 MCEVER RD

OAKWOOD, GA  
30566

**For Lease**  
**3 Buildings Totaling 14,646+/-SF**

**ANDREW JOHNSON**

*Vice President*

404.942.2029

[ajohnson@kingindustrial.com](mailto:ajohnson@kingindustrial.com)

**BRYAN MARSHBURN, SIOR, CCIM**

*Senior Vice President*

404.942.2044

[bmarshburn@kingindustrial.com](mailto:bmarshburn@kingindustrial.com)

**KING**  
*Industrial  
Realty, Inc.*

Industrial • Commercial • Investment  
404.942.2000 | [kingindustrial.com](http://kingindustrial.com)

FOR LEASE  
3 BUILDINGS  
TOTALING  
14,646+/- SF

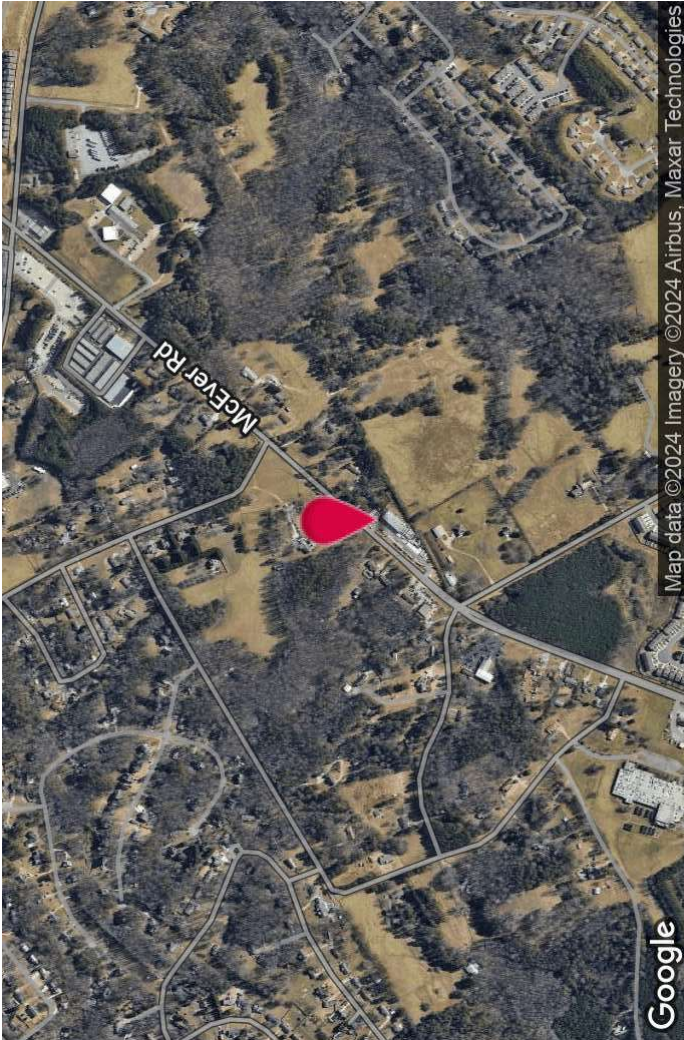


### PROPERTY HIGHLIGHTS

- **Building 1:** 9,000+/-SF, Oversized Paint Booth, (5) 15' Drive-In Doors
- **Building 2:** 2,246+/-SF Spraybooth, 4 Drive-In Doors
- **Building 3:** 3,400+/-SF, Small Office (1,000+/-SF), Floor Drains
- Highway Business Zoning

### OFFERING SUMMARY

Lot Size:	2.55 Acres
3 Buildings Totaling	14,646 SF
Zoning:	H-B



**ANDREW JOHNSON**

Vice President

404.942.2029

[ajohnson@kingindustrial.com](mailto:ajohnson@kingindustrial.com)

*Every effort has been made to provide accurate information, but no liability is assumed for errors or omissions.*

**BRYAN MARSHBURN, SIOR, CCIM**

Senior Vice President

404.942.2044

[bmarshburn@kingindustrial.com](mailto:bmarshburn@kingindustrial.com)

**King**  
Industrial  
Realty, Inc.  
CORFAC  
INTERNATIONAL

Industrial • Commercial • Investment  
404.942.2000 | [kingindustrial.com](http://kingindustrial.com)

ADDITIONAL  
PHOTOS



**ANDREW JOHNSON**

Vice President

404.942.2029

[ajohnson@kingindustrial.com](mailto:ajohnson@kingindustrial.com)

*Every effort has been made to provide accurate information, but no liability is assumed for errors or omissions.*

**BRYAN MARSHBURN, SIOR, CCIM**

Senior Vice President

404.942.2044

[bmarshburn@kingindustrial.com](mailto:bmarshburn@kingindustrial.com)

**King**  
Industrial  
Realty, Inc.

**CORFAC**  
INTERNATIONAL

Industrial • Commercial • Investment  
404.942.2000 | [kingindustrial.com](http://kingindustrial.com)

ADDITIONAL  
PHOTOS



**ANDREW JOHNSON**

Vice President

404.942.2029

[ajohnson@kingindustrial.com](mailto:ajohnson@kingindustrial.com)

*Every effort has been made to provide accurate information, but no liability is assumed for errors or omissions.*

**BRYAN MARSHBURN, SIOR, CCIM**

Senior Vice President

404.942.2044

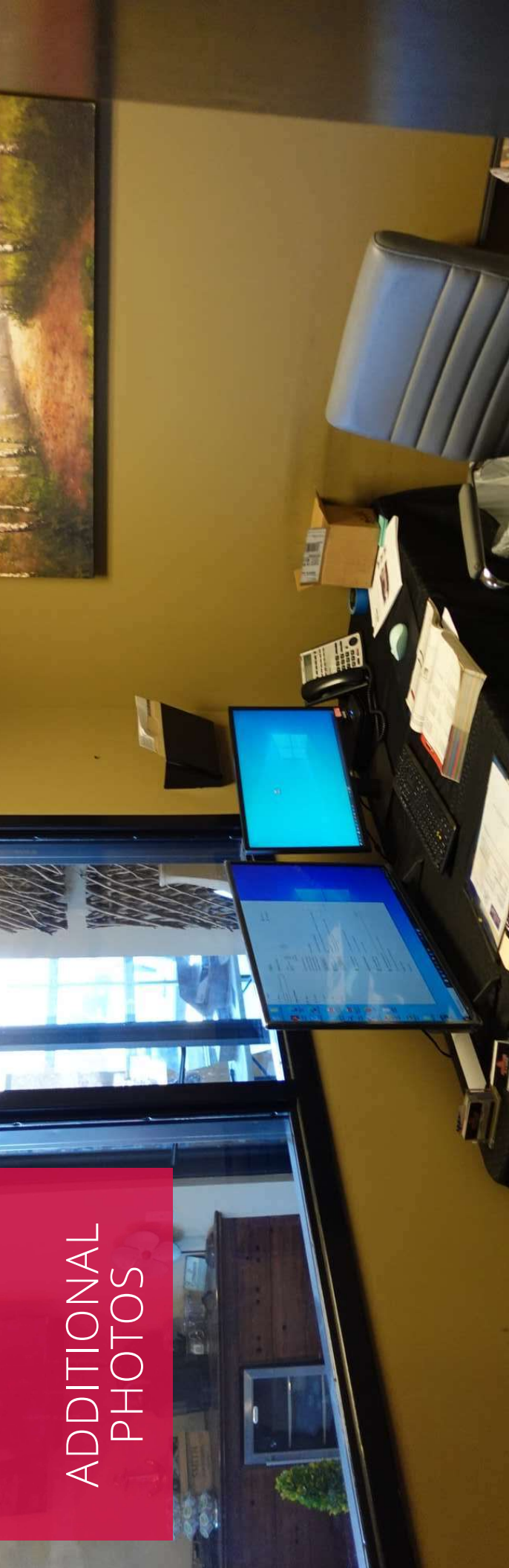
[bmarshburn@kingindustrial.com](mailto:bmarshburn@kingindustrial.com)

**King**  
Industrial  
Realty, Inc.

**CORFAC**  
INTERNATIONAL

Industrial • Commercial • Investment  
404.942.2000 | [kingindustrial.com](http://kingindustrial.com)

ADDITIONAL  
PHOTOS



**ANDREW JOHNSON**

Vice President

404.942.2029

[ajohnson@kingindustrial.com](mailto:ajohnson@kingindustrial.com)

**BRYAN MARSHBURN, SIOR, CCIM**

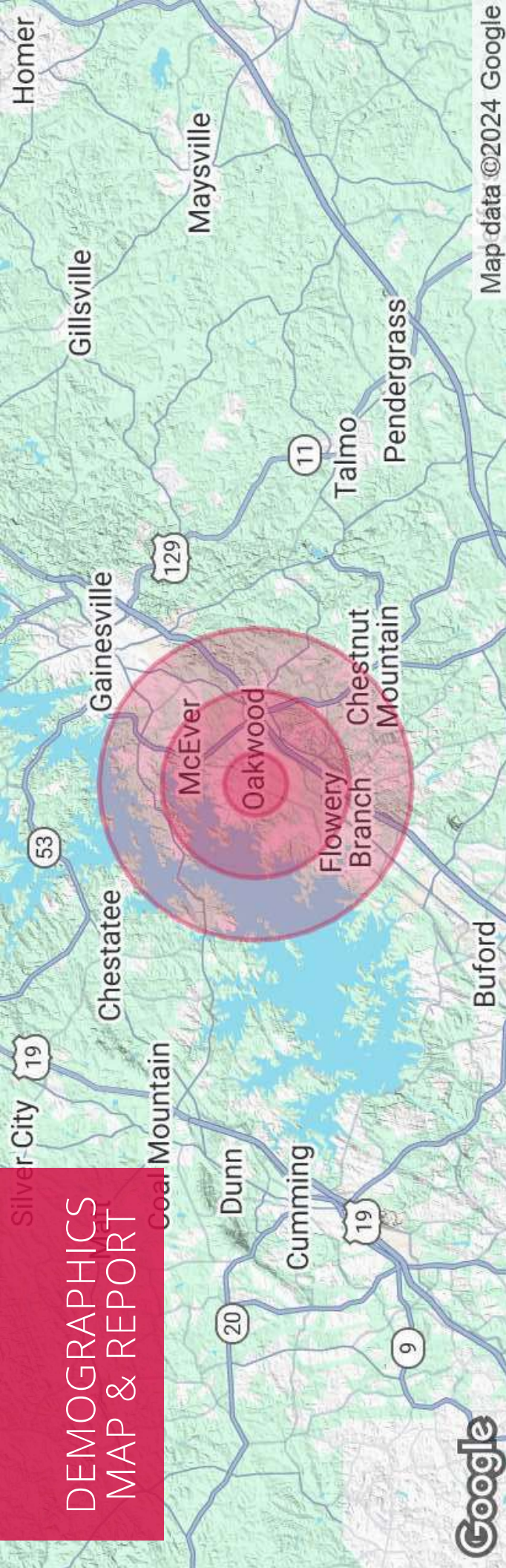
Senior Vice President

404.942.2044

[bmarshburn@kingindustrial.com](mailto:bmarshburn@kingindustrial.com)

*Every effort has been made to provide accurate information, but no liability is assumed for errors or omissions.*

# DEMOGRAPHICS MAP & REPORT



Map data ©2024 Google

## POPULATION

	1 MILE	3 MILES	5 MILES
Total Population	3,415	26,916	68,837
Average Age	39	40	39
Average Age (Male)	37	38	38
Average Age (Female)	40	41	40

## HOUSEHOLDS & INCOME

	1 MILE	3 MILES	5 MILES
Total Households	1,248	10,135	24,399
# of Persons per HH	2.7	2.7	2.8
Average HH Income	\$86,382	\$95,413	\$98,885
Average House Value	\$340,156	\$398,821	\$393,421

**ANDREW JOHNSON**

Vice President

404.942.2029

ajohnson@kingindustrial.com

Every effort has been made to provide accurate information, but no liability is assumed for errors or omissions.

**BRYAN MARSHBURN, SIOR, CCIM**

Senior Vice President

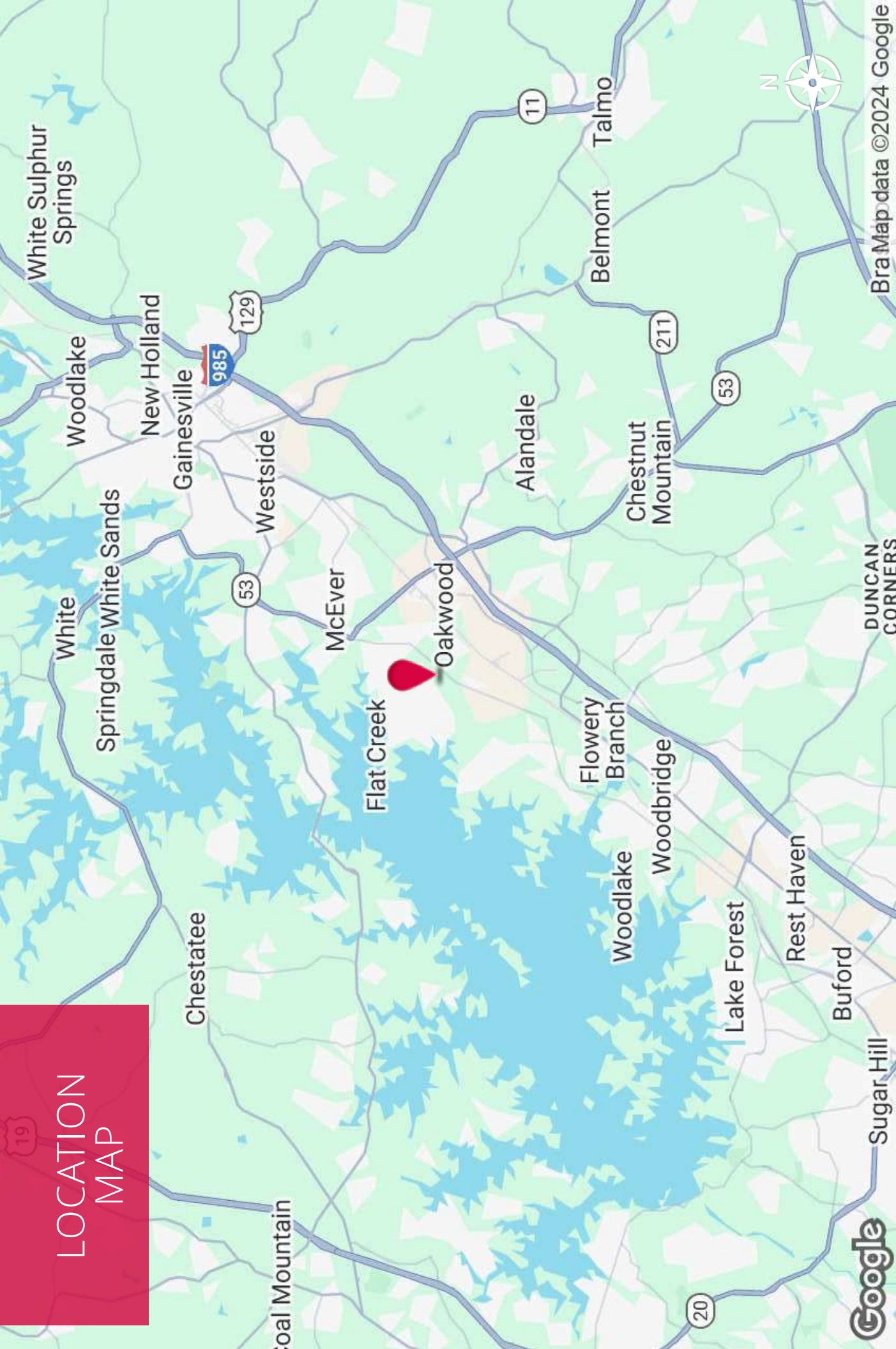
404.942.2044

bmarshburn@kingindustrial.com



**CORFAC**  
INTERNATIONAL  
Industrial • Commercial • Investment  
404.942.2000 | kingindustrial.com

# LOCATION MAP



Bra Map data ©2024 Google

**ANDREW JOHNSON**  
Vice President  
404.942.2029  
ajohnson@kingindustrial.com

**BRYAN MARSHBURN, SIOR, CCIM**  
Senior Vice President  
404.942.2044  
bmarshburn@kingindustrial.com

*Every effort has been made to provide accurate information, but no liability is assumed for errors or omissions.*

**King** Industrial Realty, Inc.  
CORFAC INTERNATIONAL  
Industrial • Commercial • Investment  
404.942.2000 | kingindustrial.com

EXCLUSIVELY LISTED BY:

**ANDREW JOHNSON**

*Vice President*  
ajohnson@kingindustrial.com  
404.942.2029

**BRYAN MARSHBURN, SIOR, CCIM**

*Senior Vice President*  
bmarshburn@kingindustrial.com  
404.942.2044

**KING**  
*Industrial  
Realty, Inc.*

Industrial • Commercial • Investment  
404.942.2000 | kingindustrial.com