

SOUNDVIEW MARKETPLACE

Port Washington | Long Island

JOIN CO-TENANTS





WHERE
NATIONAL
BRANDS
CALL
HOME



AN ENGAGING POINT-OF-VIEW

Positioned along scenic Shore Drive in Port Washington, Long Island, the shops at Soundview Marketplace offer multiple retail opportunities of varying size.

This shopping center in Long Island's affluent North Shore, is anchored by national co-tenant brands (including Target, TJ Maxx, and Walgreens), and faces beautiful Manhasset Bay.

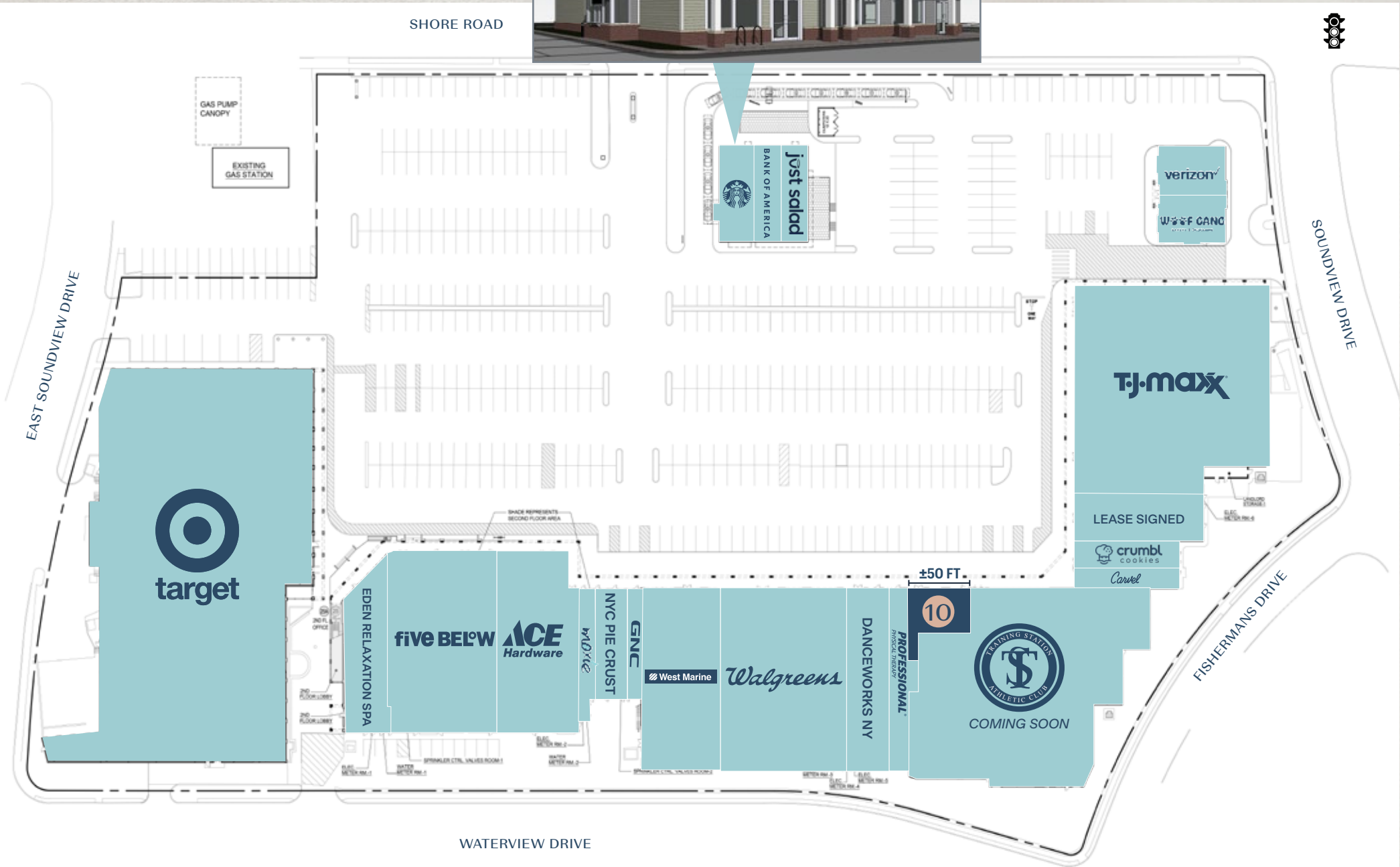


NEW PAD BUILDING WITH STARBUCKS

MULTIPLE OPPORTUNITIES

AVAILABILITIES

10 Former Dance Studio:
1,810 SF



Site plan is neither
existing nor approved



\$228,163

Average HHI



Studded with marinas, parks, yacht clubs, and golf courses, Port Washington is home to a diverse mix of higher-income residents with an active and discerning lifestyle. With proximity to affluent surrounding towns, excellent walkability to the waterfront, and easy vehicular access, this North Shore location is second to none.

NORTH SHORE LIVING



16

Parks, Clubs, and Outdoor
Recreational Spaces



63.8%

College Graduates with Bachelor's+

Demographics within a 3-mile radius



SANDS POINT

Village Club of Sands Point

LOCUST VALLEY

Glen Head Country Club

Brookville Country Club

GLEN COVE

North Shore Country Club

SEA CLIFF

GLEN HEAD

OLD BROOKVILLE

Northern Boulevard

Engineers Country Club

ROSLYN

Northern Boulevard

Old Westbury Golf & Country Club

OLD WESTBURY

Hempstead Bay

Manhasset Bay

KINGS POINT

GREAT NECK

PLANDOME

MANHASSET

PORT WASHINGTON

Plandome Country Club

Uncle Giuseppe's MARKETPLACE

North Hempstead Country Club

Harbor Links Golf Course

WHOLE FOODS MARKET

25A

Searingtown Road

LITTLE NECK

Northern Boulevard

Deepdale Golf Club

North Hills Country Club

Little Neck Bay

— STOP & SHOP PLAZA —

TACO BELL STOP & SHOP HomeGoods BURGER KING

SOUNDVIEW MARKETPLACE

target TJ-maxx ACE Hardware Walgreens Starbucks West Marine five BEL'W PROFESSIONAL PHYSICAL THERAPY

— THE AMERICANA — AT MANHASSET

PRADA Cartier SEPHORA TIFANY & CO. Apple TESLA

Shore Road

Port Washington Boulevard

17,400 VPD

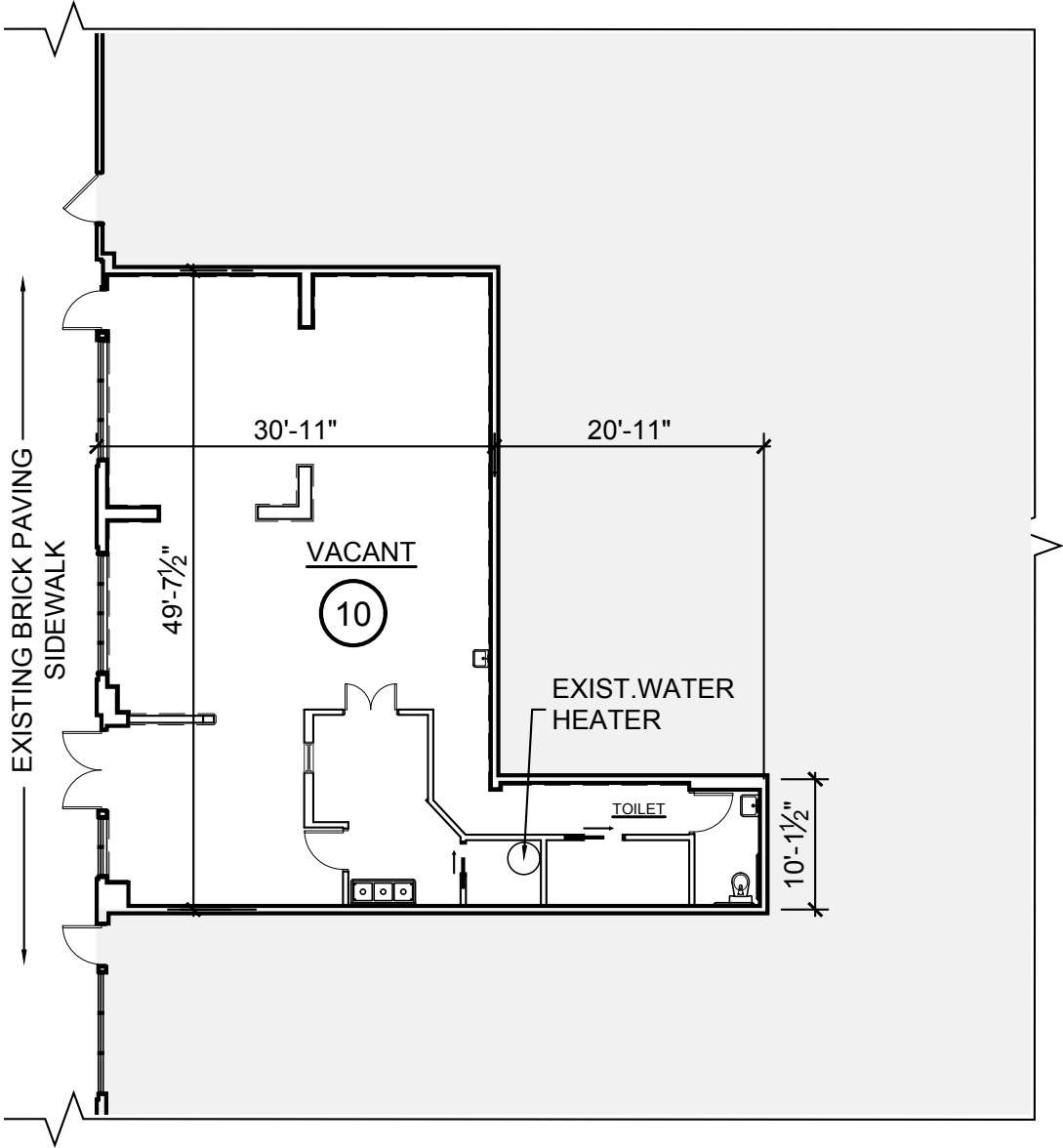
31,500 VPD

28,000 VPD

STOP & SHOP

STOP & SHOP

EXISTING UNIT 10



INTERIOR PHOTOS UNIT 10 - FORMER DANCE STUDIO



CONTACT EXCLUSIVE AGENTS

JASON SOBEL
jsobel@ripcony.com

JEREMY ISAACS
jisaacs@ripcony.com

516.933.8880

RIPCO
REAL ESTATE

1000 Woodbury Road
Suite 100
Woodbury, NY 11797
516.933.8880

Please visit us at ripcony.com for more information

This information has been secured from sources we believe to be reliable, but we make no representations as to the accuracy of the information. References to square footage are approximate. Buyer must verify the information and bears all risk for any inaccuracies.

SOUNDVIEW
MARKETPLACE