

Available For Lease

**Z
N
E
C
O**

350

FULTON
MARKET
WEST

350 N. OGDEN

cawley  CHICAGO

PROPERTY HIGHLIGHTS

[01]

Relaxed PMD-4B Zoning

Permitted Uses: Office, Retail, Flex & Distribution

[02]

Value

Fulton Market Convenience
Without Fulton Market Pricing

[03]

Public Transportation

Walking Distance To...
Green, Pink & Blue Lines

[04]

Best of Both Worlds

Fulton Market Amenities to East
Fulton Market West Offers Breweries,
Restaurants

[05]

Flex Building

Flexible Lease Terms & Space Sizing

[06]

Ample Amounts of Natural Light

Window Lines to East overlooking
Fulton Market, West Loop and City
Landscape Backdrop

[07]

Concrete Loft - Office/Flex

Soaring Floor to Ceiling Heights
Exposed Concrete & Brick

[08]

Loading

One (1) Freight Elevator
Six (6) Exterior Loading Docks

[09]

Secure Building

With Keycard Entry



350

FULTON
MARKET
WEST

Z

D

G

O

BUILDING OVERVIEW

Address:	350 N. Ogden Fulton Market West
Total Building Size:	63,504 RSF
Stories:	4 Stories with Lower Level
Elevator:	1 Freight
Parking:	15 Spaces
Power:	3 Phase 800-1,600 AMPS 120-208 Volts
Loading:	6 Exterior Docks



AVAILABLE SUITE

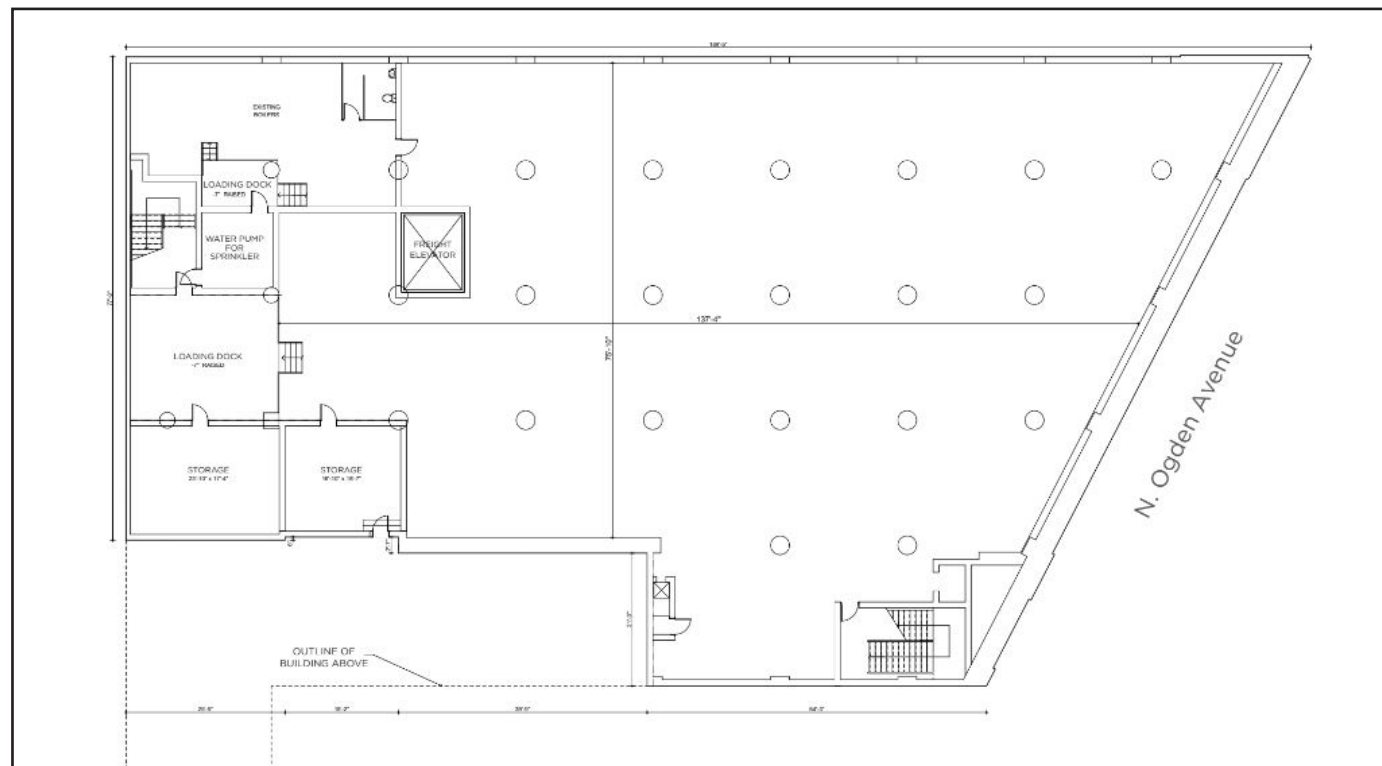
Suite 100 | 12,725 R/F

Divisible to 2,000 R/F

SUITE SPECIFICATIONS

- **Opportunity to Occupy Entire Floor**
 - Ground Floor Exposure
- **Divisible to 2,000 Sq. Ft.**
 - Custom Buildout Packages Available
- **Direct Access to Loading & Freight**
 - Lobby Entrance ID
- **Column Spacing**
 - 18' 6" E/W x 17' N/S
- **Ceiling Height**
 - 13'2"

FLOOR PLAN



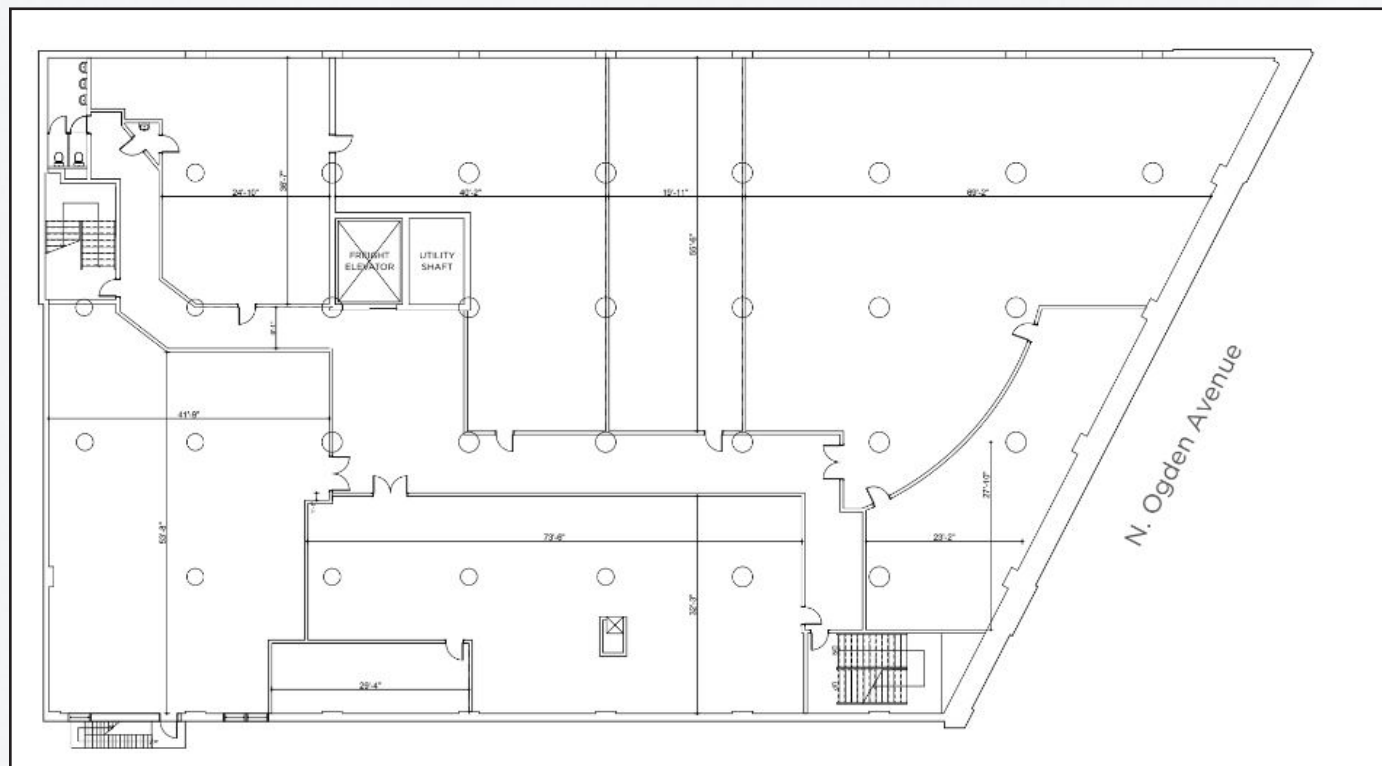
AVAILABLE SUITE

Suite 300 | 5,140 R/F

SUITE SPECIFICATIONS

- **Corner Suite With Abundance of Space**
 - Ample Natural Light With Window Line Overlooking Fulton Market and Downtown
- **Wide Open Concrete Loft Space is Perfect For:**
 - Office
 - Creative Flex
 - Studio
- **Column Spacing**
 - 17' 10" E/W x 17' 10" N/S
- **Ceiling Height**
 - 10'6"
- **Window Frames (9)**
 - 6' 10" Height
 - 7' 6" Width
- **Window Frames (1)**
 - 6' 2" Height
 - 13' 3" Width

3RD FLOOR



FULTON MARKET WEST

THE CENTER OF CONNECTIVITY



350
OGDEN

WEST TOWN

WICKER PARK

GOOSE ISLAND

OLD TOWN

GOLD COAST

HUMBOLDT PARK

M MD-N
M MD-N
M MD-N

RIVER NORTH

STREETERVILLE

RIVER WEST

FULTON RIVER DISTRICT

FULTON MARKET

Ogden Proposed

Ashland

Damen Proposed

Clinton

CHICAGO CENTRAL BUSINESS DISTRICT

GARFIELD PARK

UNITED CENTER

WEST LOOP

OGILVIE TRANSPORTATION CENTER

CHICAGO UNION STATION

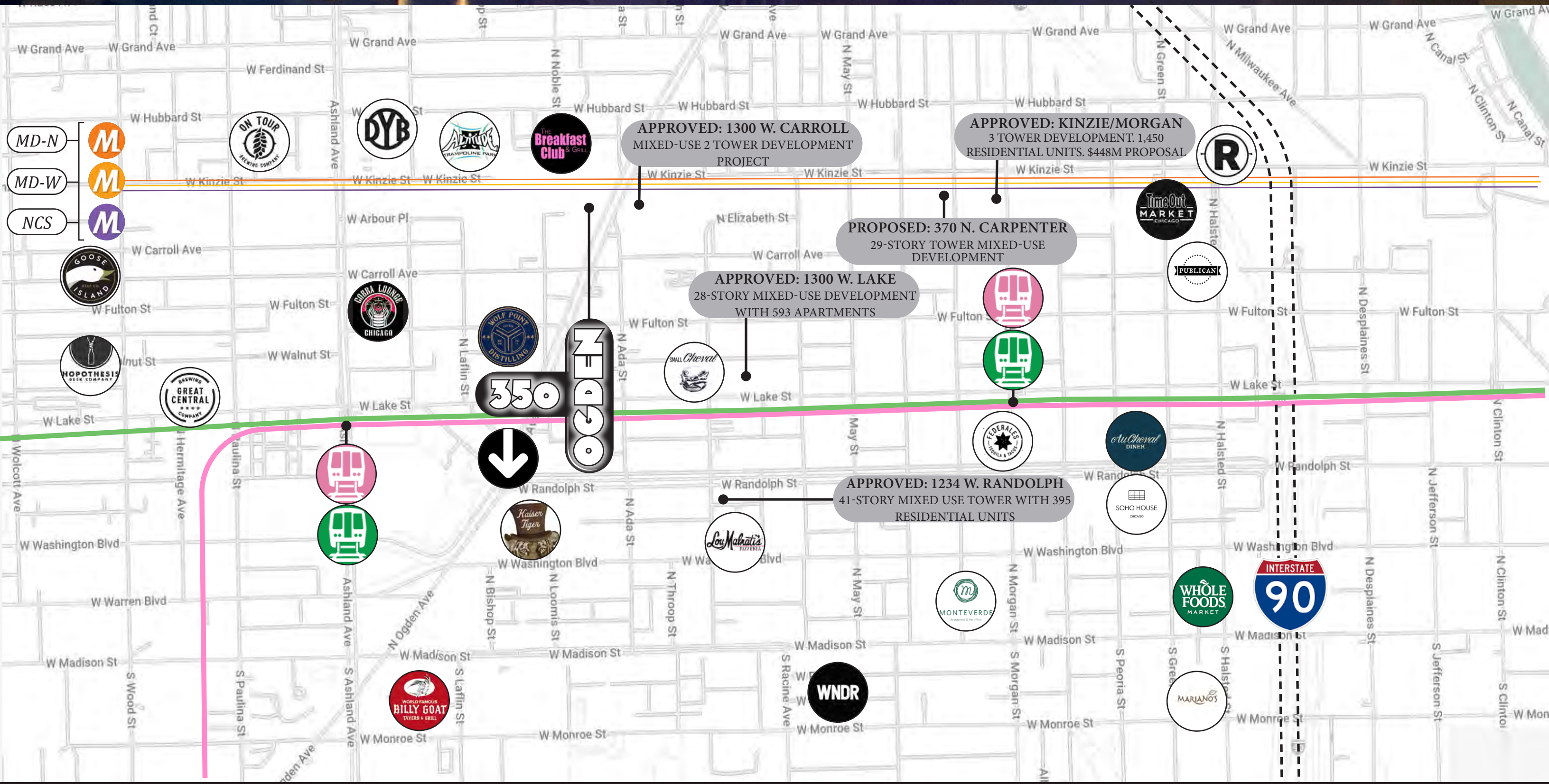
HOMAN SQUARE

IL MEDICAL DISTRICT/
TRI-TAYLOR

UIC UNIVERSITY OF ILLINOIS CHICAGO

SOUTH LOOP

FULTON MARKET DISTRICT





F
U
N
C
T
I
O
N



M
A
R
K
E
T



M
U
S
H





CONTACT

ZACH PRUITT
CEO, Principal, Designated Managing
Broker
(312) 766-4289
zpruitt@cawleychicago.com

BRAYDEN SCHIFF
Associate
(630) 869-0919
bschiff@cawleychicago.com

ROBYN LYNN
Licensed Business Manager
(312) 766-4291
rlynn@cawleychicago.com