

# plaza pointe office park

23297 SOUTH POINTE DRIVE

LAGUNA HILLS, CA 92653

**±7,700 SF OFFICE BUILDING FOR SALE/LEASE**



±912 - 7,700 Square Feet of Office Space for Lease

For More Information, Contact:

**MARK JERUE**  
Senior Vice President  
License ID# 01073399  
(949) 790-3121  
mjerue@leeirvine.com

**CRAIG FITTERER**  
Senior Vice President  
License ID# 01246929  
(949) 790-3123  
cfitterer@leeirvine.com

**BJ FELL**  
Senior Vice President  
License ID# 01929179  
(949) 790-3144  
bfell@leeirvine.com

 **LEE &  
ASSOCIATES**  
COMMERCIAL REAL ESTATE SERVICES

No warranty or representation is made to the accuracy of the foregoing information. Terms of sale or lease and availability are subject to change or withdrawal without notice.

# plaza pointe office park

## 23297 SOUTH POINTE DRIVE

LAGUNA HILLS, CA 92653

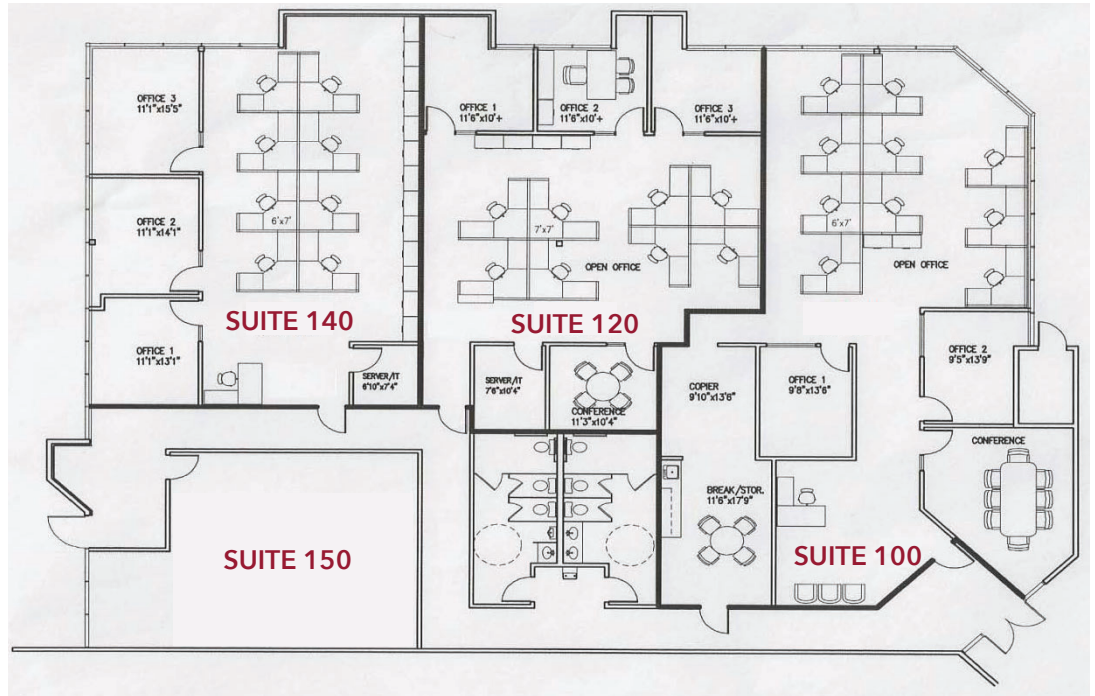
### AVAILABLE FOR LEASE:

- Suite 100: ±2,838 RSF
- Suite 120: ±1,963 RSF
- Suite 140: ±1,987 RSF
- Suite 150: ±912 RSF

\*Suites can be combined for up to ±7,700 SF

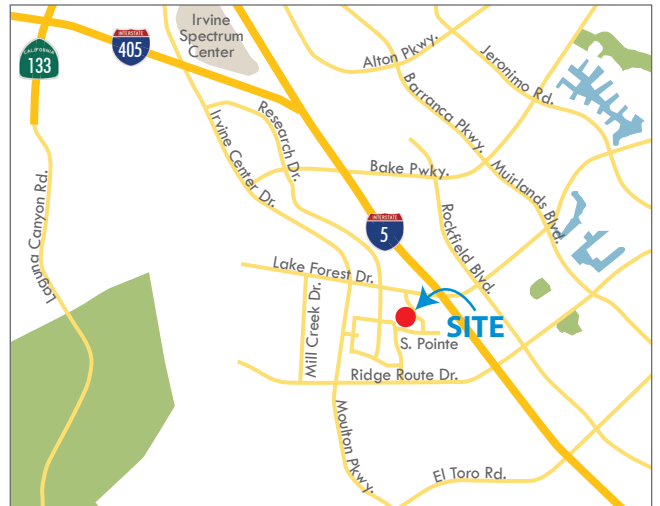


Hypothetical Floor Plans



### PROPERTY FEATURES:

- Entire Building Available for Sale
- Low Rise Campus Environment
- Refurbished Carpet, Ceiling Lights and Cherry Oak Office Doors
- Located off the 405 and 5 Freeways (El Toro Y Interchange)
- Free 4:1 Surface Parking
- Located Near Numerous Amenities Including the Irvine Spectrum Entertainment Center



For More Information, Contact:

**MARK JERUE**  
Senior Vice President  
License ID# 01073399  
(949) 790-3121  
mjerue@leeirvine.com

**CRAIG FITTERER**  
Senior Vice President  
License ID# 01246929  
(949) 790-3123  
cfitterer@leeirvine.com

**BJ FELL**  
Senior Vice President  
License ID# 01929179  
(949) 790-3144  
bfell@leeirvine.com



COMMERCIAL REAL ESTATE SERVICES

No warranty or representation is made to the accuracy of the foregoing information. Terms of sale or lease and availability are subject to change or withdrawal without notice.