



Premium Hillsborough Office For Lease

320 EXECUTIVE COURT, HILLSBOROUGH, NC 27278

Emilee Collins, CCIM

emilee@pickettsprouse.com

919-730-7040

Matthew Morton

matthew@pickettsprouse.com

919-864-0864

**PICKETT
SPROUSE**
COMMERCIAL
REAL ESTATE



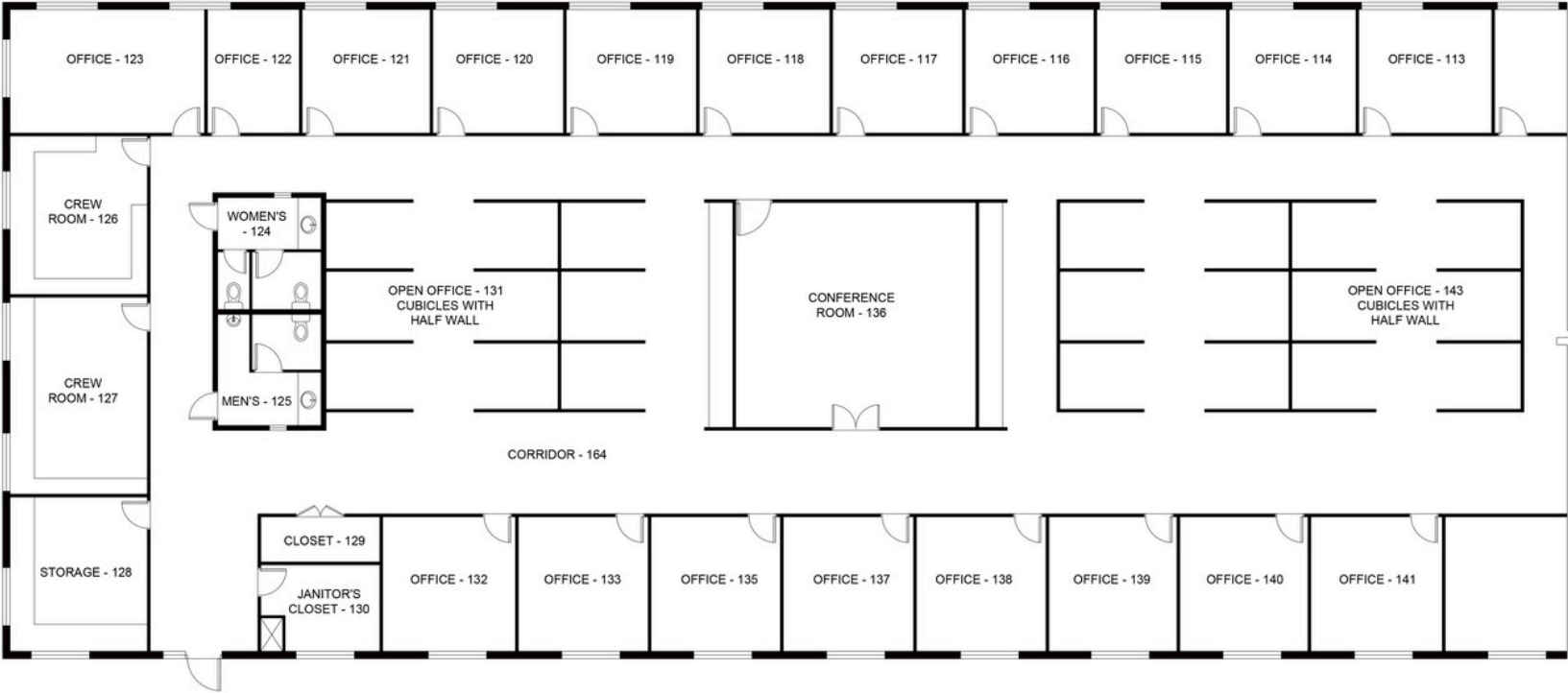
Professional Office in Orange County

Exceptional 7,970 SF professional office available at 320 Executive Court in Hillsborough. Zoned High Intensity Commercial in Orange County, this well-maintained space offers a private entrance, open office area, 20 private offices, two conference rooms, private restrooms, and abundant storage. The location provides excellent accessibility and visibility for clients and employees alike.

SQUARE FOOTAGE	7,970
COUNTY	Orange
PARCEL NUMBER	9874802287.002
ZONING	High Intensity Commercial (HIC)
LEASE RATE	\$15,415/month (includes rent and utilities)
BEST USE	Professional Office



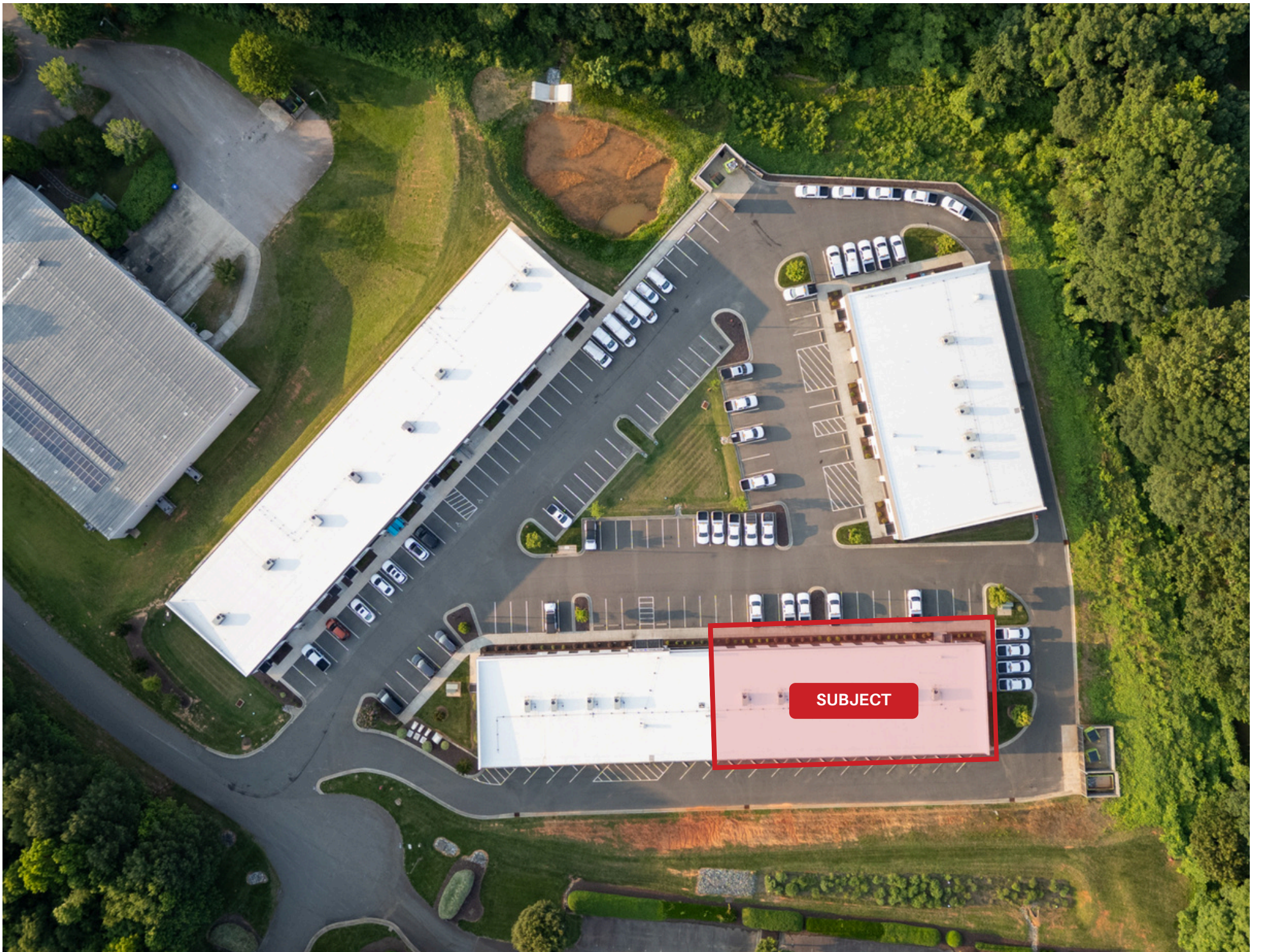
FLOOR PLAN



FLOOR PLAN

This floor plan including furniture, fixture measurements and dimensions are approximate and for illustrative purposes only. BoxBrownie.com gives no guarantee, warranty or representation as to the accuracy and layout. All enquiries must be directed to the agent, vendor or party representing this floor plan.

320 Executive Court



SUBJECT



RICK ASHBY, STATE
FARM INSURANCE

BRIGHT PATH
BEHAVIORAL
HEALTH

ORANGE COUNTY
SPORTSPLEX

PASSMORE
SENIOR
CENTER

SOLTYS PLACE
ADULT DAY
HEALTH

JOE VAN
GOUGH
ROASTERS

UNC

CMA SIGNS

U.S. HWY 70A

HILLSBOROUGH
VETERINARY
CLINIC

COMPLETE
SMILES OF
HILLSBOROUGH

THE LAW
OFFICE OF
DERRICK J.
HENSLEY

ENDSWELL
FUNERAL
HOME

ORANGE COUNTY
EMERGENCY SERVICES

SATTERFIELD
LAW

ORANGE
COUNTY
FINANCIAL
SERVICES

BARLOW SCIENTIFIC

PEAK RESOURCES
BROOKSHIRE

BIG SPOON
ROASTERS

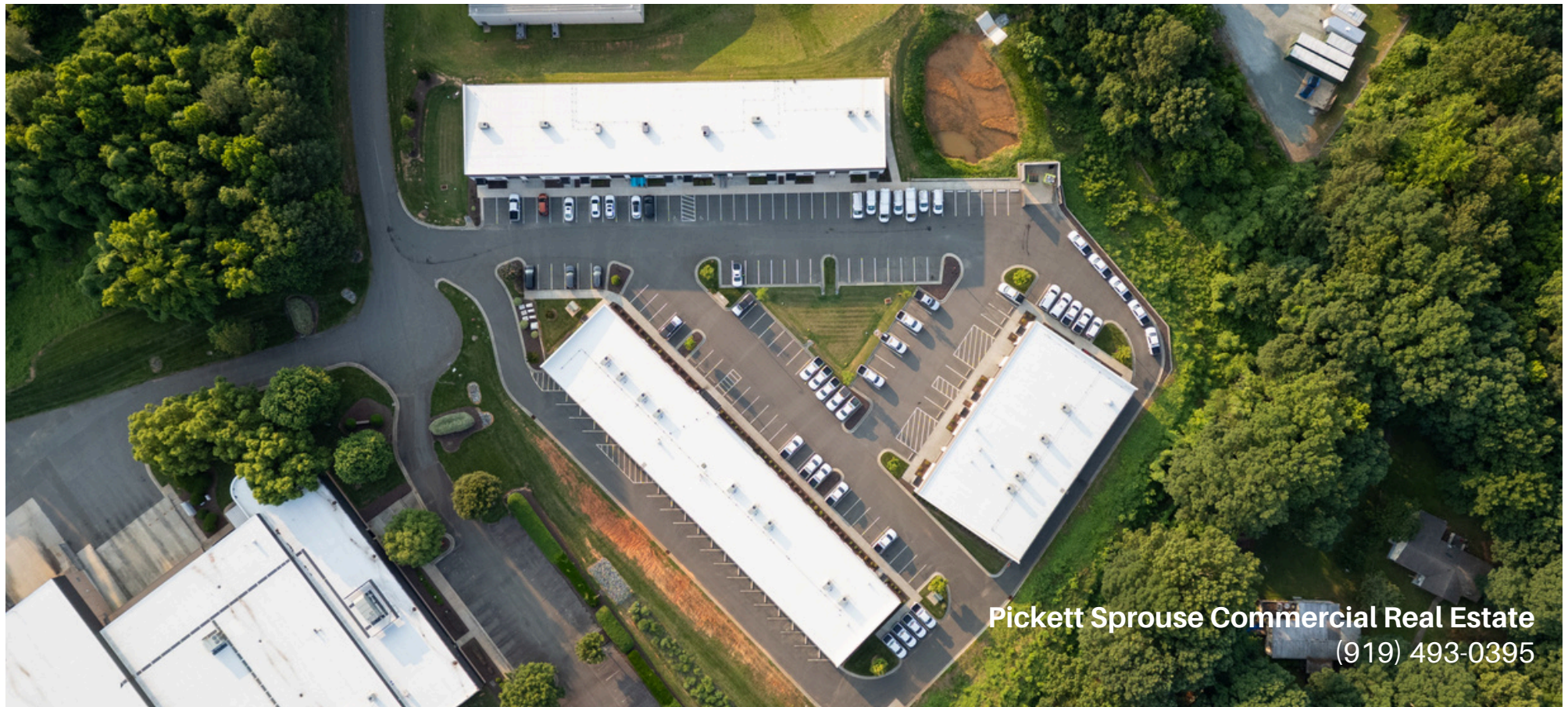
CLEAR
TECHNOLOGIES

MONARCH
MOVEMENT
COMPANY

PHE

SUBJECT





Contact Us

Emilee Collins, CCIM

emilee@pickettsprouse.com
919-730-7040

pickettsprouse.com

Matthew Morton

matthew@pickettsprouse.com
919-864-0864

**PICKETT
SPROUSE**
COMMERCIAL
REAL ESTATE