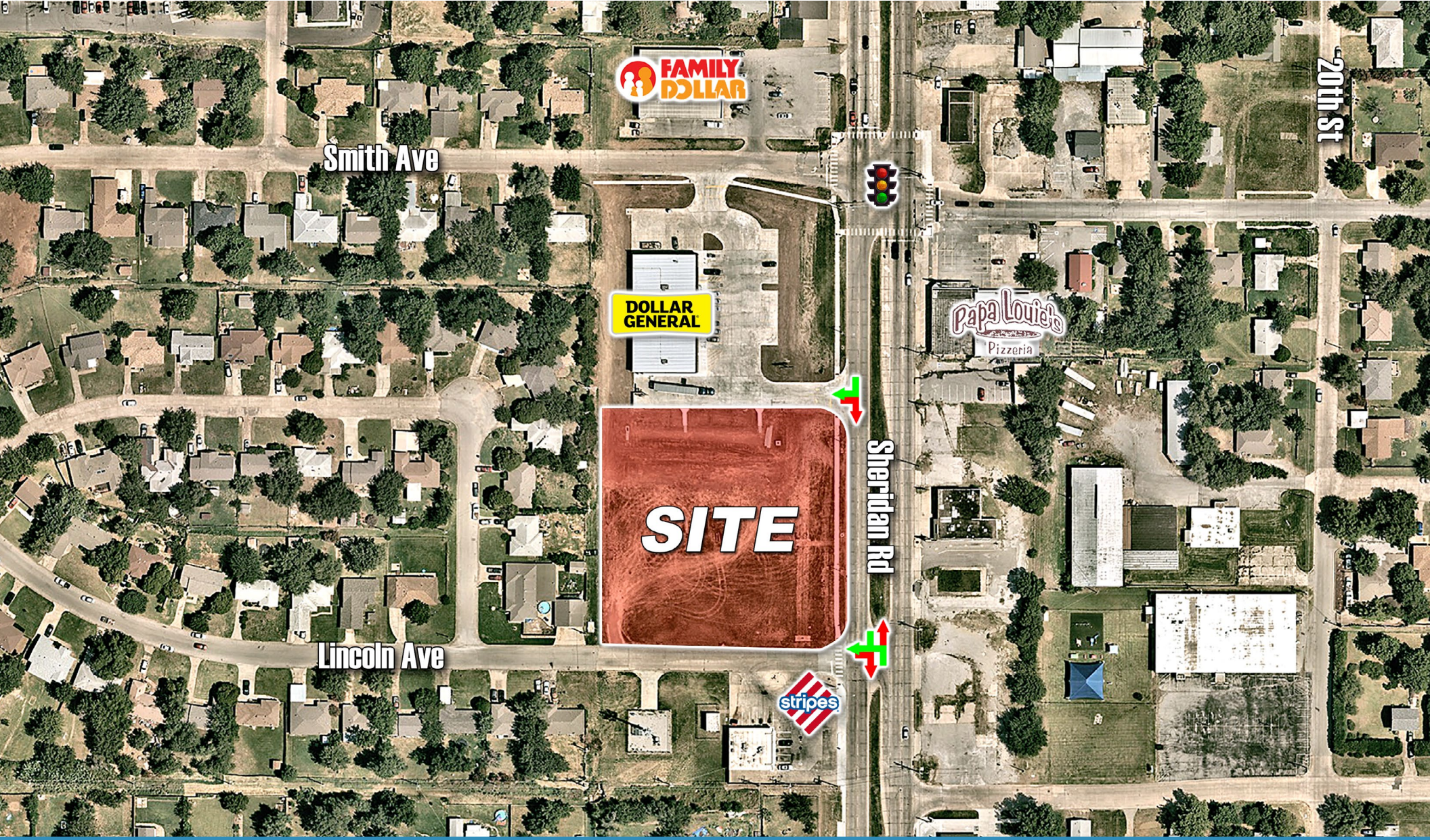


2300 NW SHERIDAN RD, LAWTON, OK 73505 - LAND FOR SALE

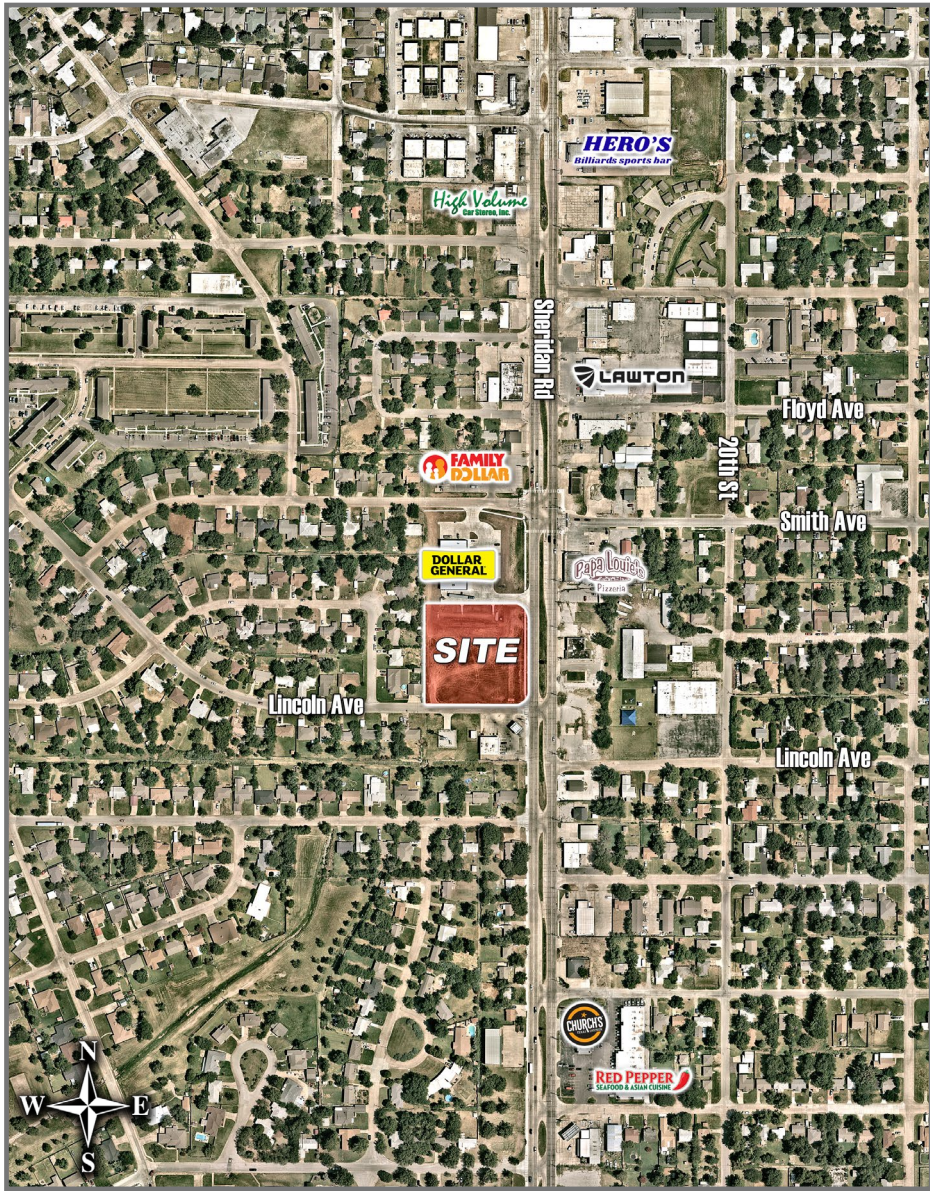


DANNY OJEDA
(405).206.9659
DANNY.OJEDA@RSG-CRE.COM

ANDERSON INMAN
(405).888.0330
ANDERSON.INMAN@RSG-CRE.COM

RETAIL SITE GROUP, LLC
2932 NW 122ND STREET, STE 7
OKLAHOMA CITY, OK 73120

2300 NW SHERIDAN RD, LAWTON, OK 73505 - OVERVIEW



Property Details & Highlights

- Size: 1.2 AC
- \$6/SF
- Sale Price: \$315,704
- Signalized intersection
- Located in Comanche County
- Lawton is about 90 miles southwest of Oklahoma City
- Lawton is home to Fort Sill, a major U.S. Army installation with a focus on artillery training. Fort Sill has a long history, dating back to its establishment in 1869.
- Major employers include Fort Sill, local schools, and healthcare providers.

Traffic Counts

Sheridan Rd: 27,873 VPD (OKDOT 2021)

Demographic Snapshot - 1-3-5 Mile Radius Rings

2024 POPULATION	DAYTIME POP.	AVG HH INCOME
1-Mile: 10,439	1-Mile: 9,445	1-Mile: \$54,340
3-Mile: 51,948	3-Mile: 59,094	3-Mile: \$60,809
5-Mile: 82,251	5-Mile: 91,180	5-Mile: \$71,194



DANNY OJEDA
 (405).206.9659
 DANNY.OJEDA@RSG-CRE.COM

ANDERSON INMAN
 (405).888.0330
 ANDERSON.INMAN@RSG-CRE.COM

RETAIL SITE GROUP, LLC
 2932 NW 122ND STREET, STE 7
 OKLAHOMA CITY, OK 73120

