

# For Lease

## Powerline Park

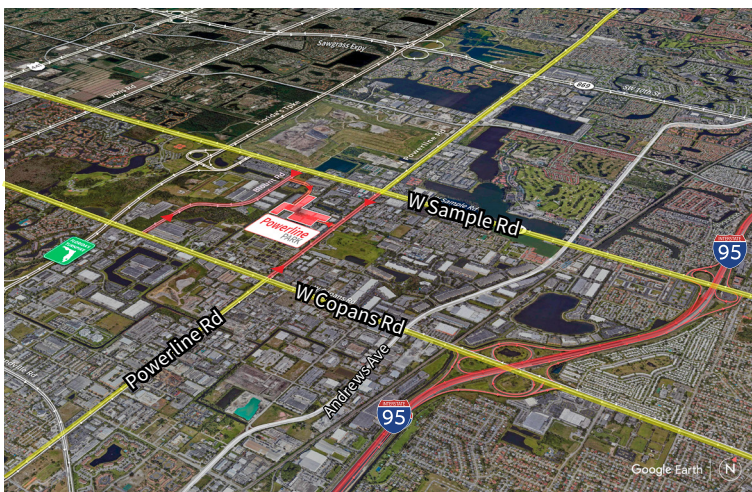
2254 NW 30<sup>th</sup> Place  
Pompano Beach, Florida 33069



Industrial Space For Lease  
**8,354 SF**

### Powerline Park

2254 NW 30th Place, Pompano Beach, Florida 33069



### Location

- Easy access off Sample Road and Powerline Road
- Excellent access to I-95 and the Florida Turnpike
- Equidistant to Fort Lauderdale/Hollywood International Airport and Palm Beach International Airport

### Space Features

- 8,354 SF total
- 800 SF of office
- 7,554 SF of warehouse
- 18' clear height
- Two (2) grade level doors
- One (1) dock high door (well)
- Air-conditioned warehouse
- Parking ratio: 2.0/1,000 sf
- Available 3/1/2024



© 2023 Jones Lang LaSalle IP, Inc.

**Yuri Quispe**  
Vice President  
M +1 772 201 5305  
yuri.quispe@jll.com

**Peter Johnston**  
Associate  
M +1 954 980 3224  
peter.johnston1@jll.com

**Peter Sheridan**  
Senior Managing Director  
M +1 954 439 4941  
peter.sheridan@jll.com



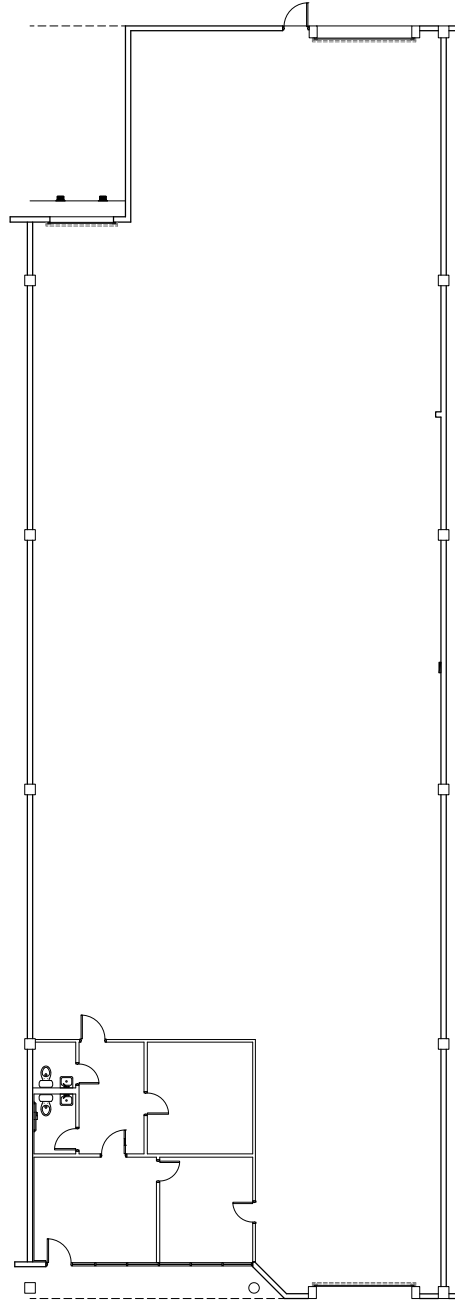
# For Lease

## Powerline Park

2254 NW 30th Place, Pompano Beach, Florida 33069

### Powerline Park Floor Plan - Bay 2

Total: 8,354 SF  
Office: 800 SF  
Warehouse: 7,554 SF



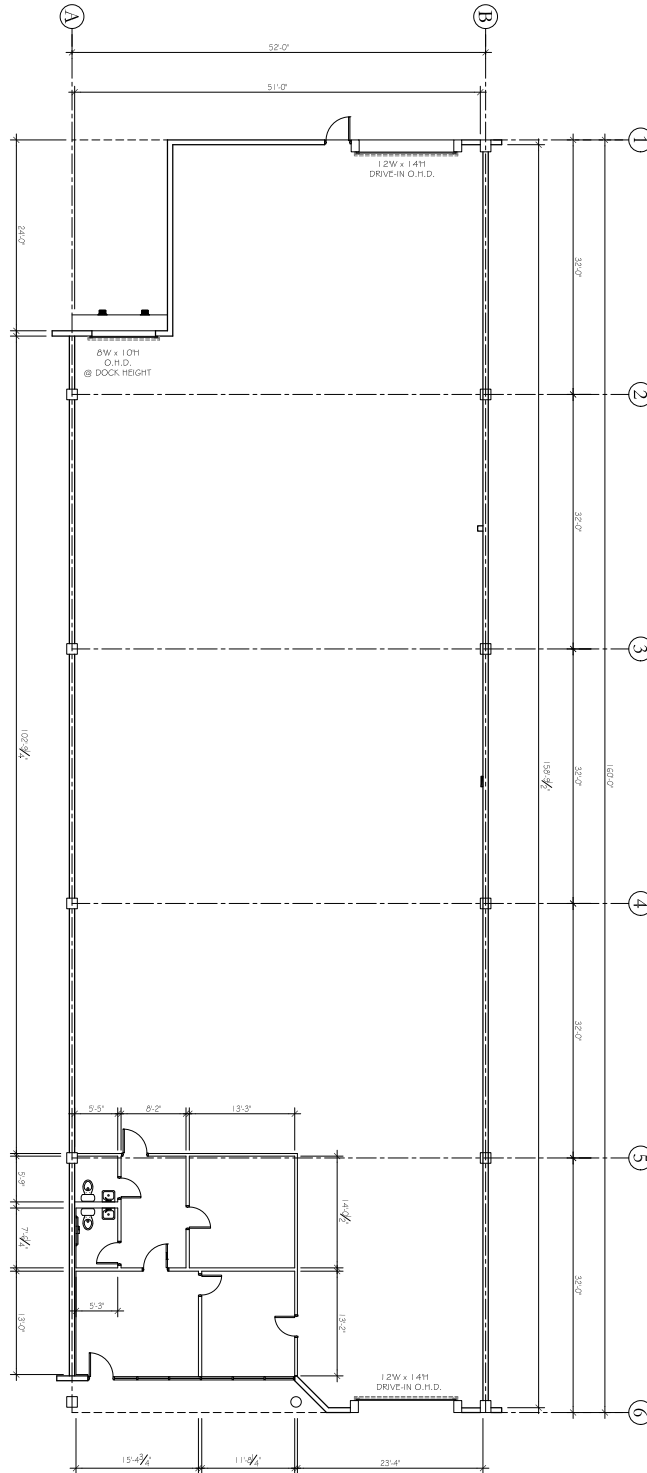
# For Lease

## Powerline Park

2254 NW 30th Place, Pompano Beach, Florida 33069

### Powerline Park Dimensioned Floor Plan - Bay 2

Total: 8,354 SF  
Office: 800 SF  
Warehouse: 7,554 SF



# For Lease

## Powerline Park

2254 NW 30th Place, Pompano Beach, Florida 33069

### Powerline Park Site Plan

 - Subject Property



Building	Bay	Total (SF)	Office (SF)	Warehouse (SF)	Loading	Clear Height	Available Date
2	2	8,354	800	7,554	1 DH / 2 G	18"	3/1/2024

