

Medical Office Building

LEASE RATE

\$10,690 per mo.
PLUS SALES TAX

PROPERTY HIGHLIGHTS

Walk-In 5,131 SF Ready Medical Office Building
Gulf Coast Medical Park
4531 N Davis Hwy, Pensacola, FL

4531 N Davis is a two-story medical office building that is ideally situated in Gulf Coast Medical Park, a professional healthcare hub designed for medical practice users. The 5,131 SF building is thoughtfully configured to support a seamless patient experience and efficient medical operations.

DeeDee Davis, Broker

o: 850 380 6150

e: ddavis@naipensacola.com



24 W. Chase St. Pensacola, FL. 32502



+1 850 433 0577



naipensacola.com

NAIPensacola

PROPERTY HIGHLIGHTS

Spacious Reception & Waiting Area – Featuring LVP wood plank flooring, floor-to-ceiling windows, and a dedicated two-window reception check-in area with built-in desk, filing cabinets, shelving, and admin support stations.

Medical Suite Layout:

- 8 Exam Rooms – Each equipped with sinks and built-in cabinetry
 - 4 Physicians' Offices
 - Dedicated Lab Space
 - Equipment Room for medical and IT infrastructure
 - Elevator Access to the second floor
- Patient Convenience: A covered portico allows for easy patient drop-off, especially during inclement weather. There is a pharmacy located within the complex for patient
 - Exterior & Curb Appeal: Attractive red-tone brick and cream-colored stucco for a low-maintenance exterior, complemented by a dark green metal roof and awning.

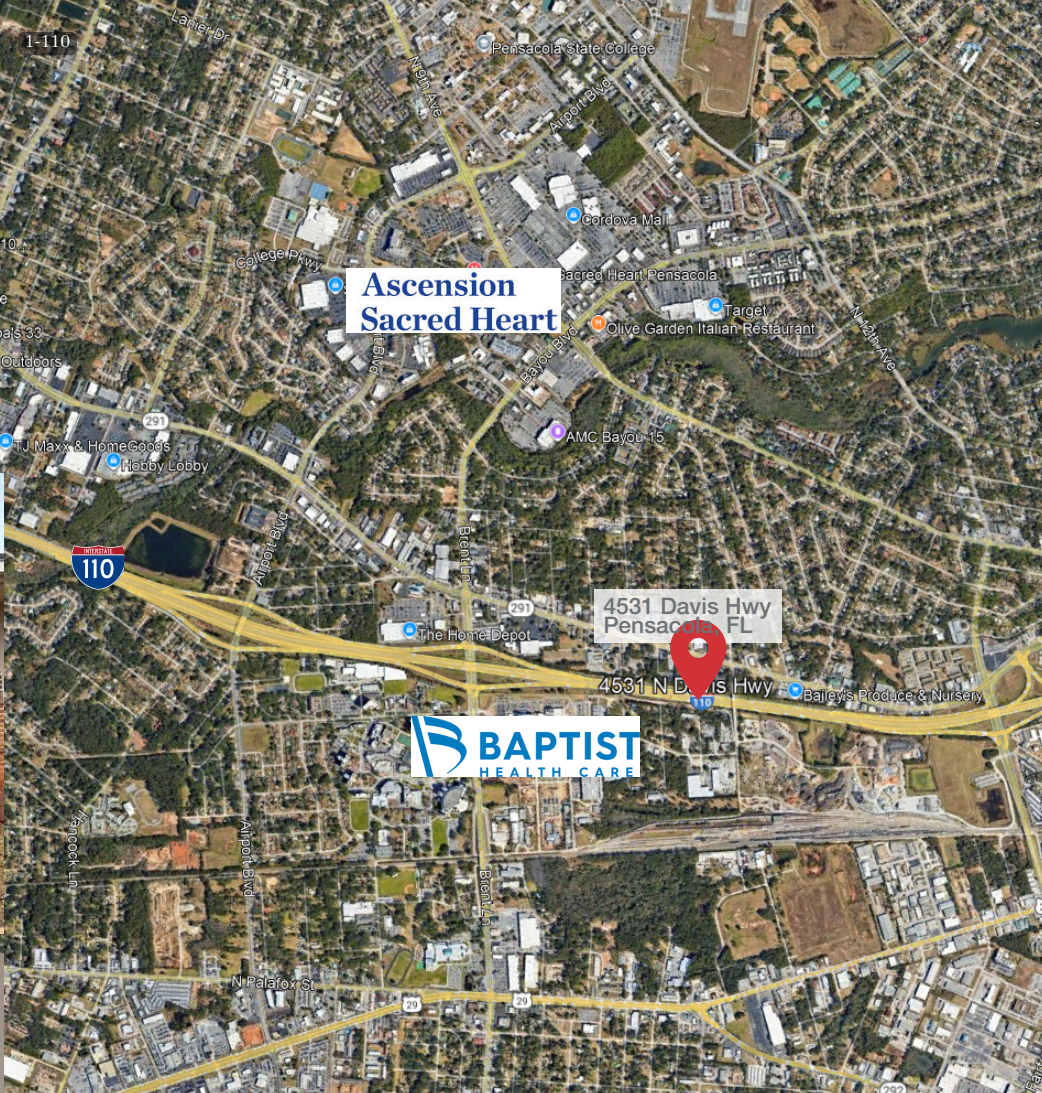
This premier medical office space is perfect for a growing or established practice seeking a professional setting in a well-maintained medical park with excellent accessibility to a dense population base and area hospitals.

DeeDee Davis, Broker

o: 850 380 6150

e: ddavis@naipensacola.com





LEASE DESCRIPTION

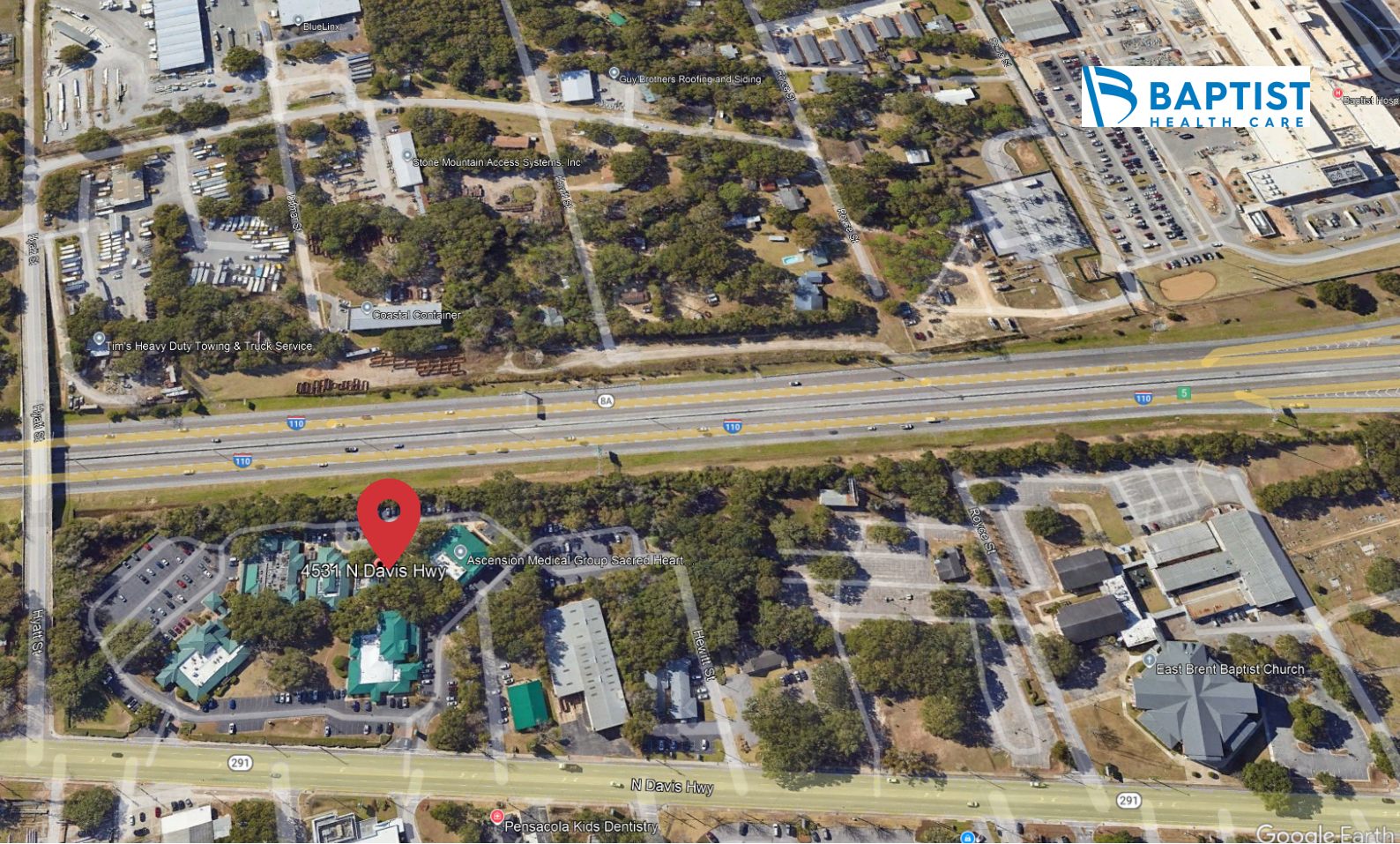
- Lease Type: Modified Gross
- Term: 5-YR

Tenant Expenses:

- Power
- Water/Sewer/Garbage
- Liability Insurance

AssociateWE OBTAINED THE INFORMATION ABOVE FROM SOURCES WE BELIEVE TO BE RELIABLE. HOWEVER, WE HAVE NOT VERIFIED ITS ACCURACY AND MAKE NO GUARANTEE, WARRANTY OR REPRESENTATION ABOUT IT. IT IS SUBMITTED SUBJECT TO THE POSSIBILITY OF ERRORS, OMISSIONS, CHANGE OF PRICE, RENTAL OR OTHER CONDITIONS, PRIOR SALE, LEASE OR FINANCING, OR WITHDRAWAL WITHOUT NOTICE. WE INCLUDE PROJECTIONS, OPINIONS, ASSUMPTIONS ORESTIMATES FOR EXAMPLE ONLY, AND THEY MAY NOT REPRESENT CURRENT OR FUTURE PERFORMANCE OF THE PROPERTY. YOU AND YOUR TAX AND LEGAL ADVISORS SHOULD CONDUCT YOUR OWN INVESTIGATION OF THE PROPERTYAND TRANSACTION.





LOCATION HIGHLIGHTS

Situated in an exceptionally well-maintained medical office park, this property is surrounded by a strong network of medical and business professionals, creating an ideal environment for healthcare practitioners and service providers.

Key Location Advantages:

- Direct access to the Interstate for seamless connectivity and travel efficiency.
- Minutes from major medical centers, including the newly built Baptist Hospital Campus and Ascension Sacred Heart, ensuring proximity to a strong referral network and healthcare infrastructure.
- This strategic location enhances accessibility for both practitioners and patients, making it an outstanding choice for a medical office.

DeeDee Davis, SIOR

o: 850 380 6150

e: ddavis@naipensacola.com