

LAKE NORMAN MEDICAL PLAZA

146 & 170 MEDICAL PARK ROAD
MOORESVILLE | NORTH CAROLINA



WILL ROBERTSON

704-996-5824

will@FlagshipHP.com

GREG MCINTOSH

704-562-2153

greg@FlagshipHP.com

FOR LEASE

PROPERTY OVERVIEW

PROPERTY SUMMARY

- 3 Medical Office Buildings within walking distance of Duke Health Lake Norman Hospital
- Near Lowe's headquarters
- Diverse Tenant Mix
- Owned and Managed by Healthcare Realty

CONTACT:

WILL ROBERTSON
704-996-5824
will@flagshipHP.com

GREG MCINTOSH
704-562-2153
greg@flagshipHP.com

146 Medical Park Road:



Total Building Area:

± 44,072 RSF



Year Built:

2002



Lease Rate:

\$29.00/SF, FS



Total Availability:

- Suite 220 - 3,589 SF

170 Medical Park Road:



Total Building Area:

± 45,108 RSF



Year Built:

2000



Lease Rate:

\$29.00/SF, FS

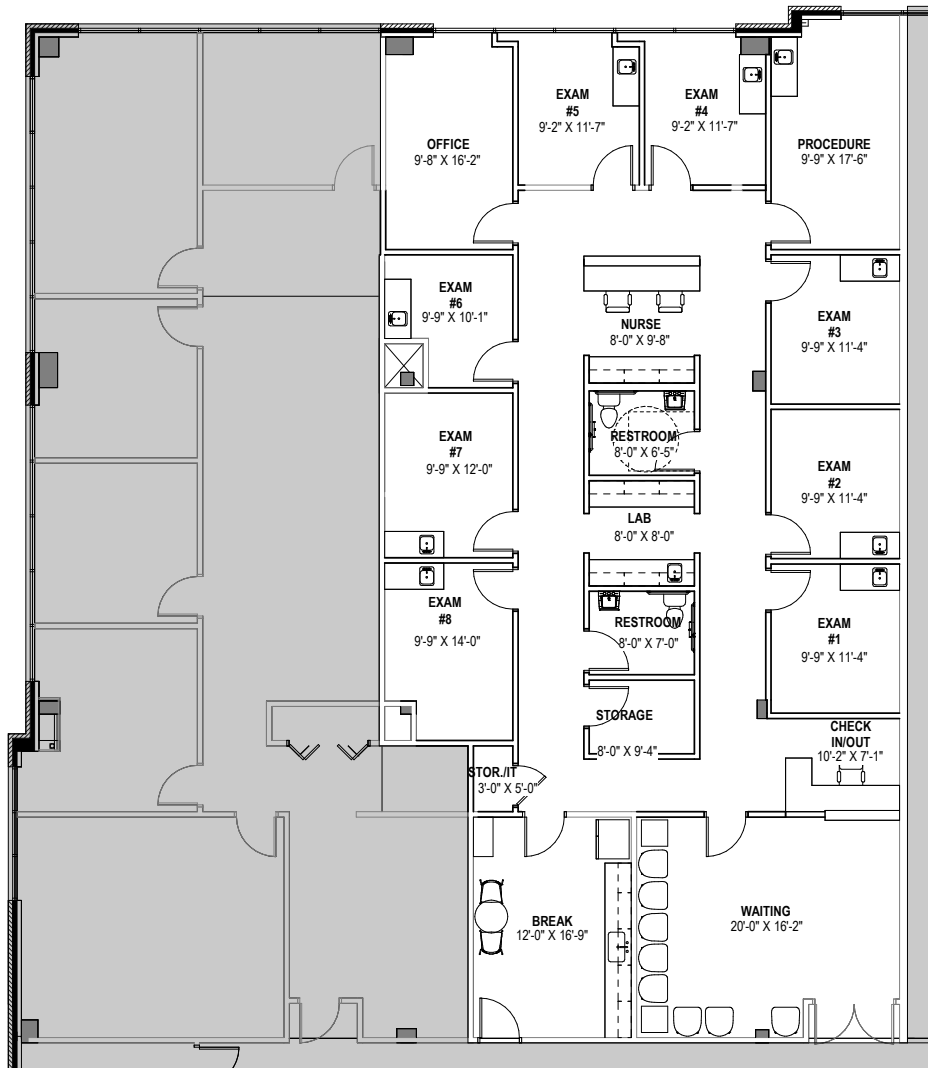


Total Availability:

- Suite 103 - 5,077 SF
- Suite 207 - 4,063 SF
- Suite 301 - 2,933 SF

BUILDING 146 FLOOR PLAN

SUITE 220: 3,589 SF



SUITE 220:
3,589 SF

LEASED

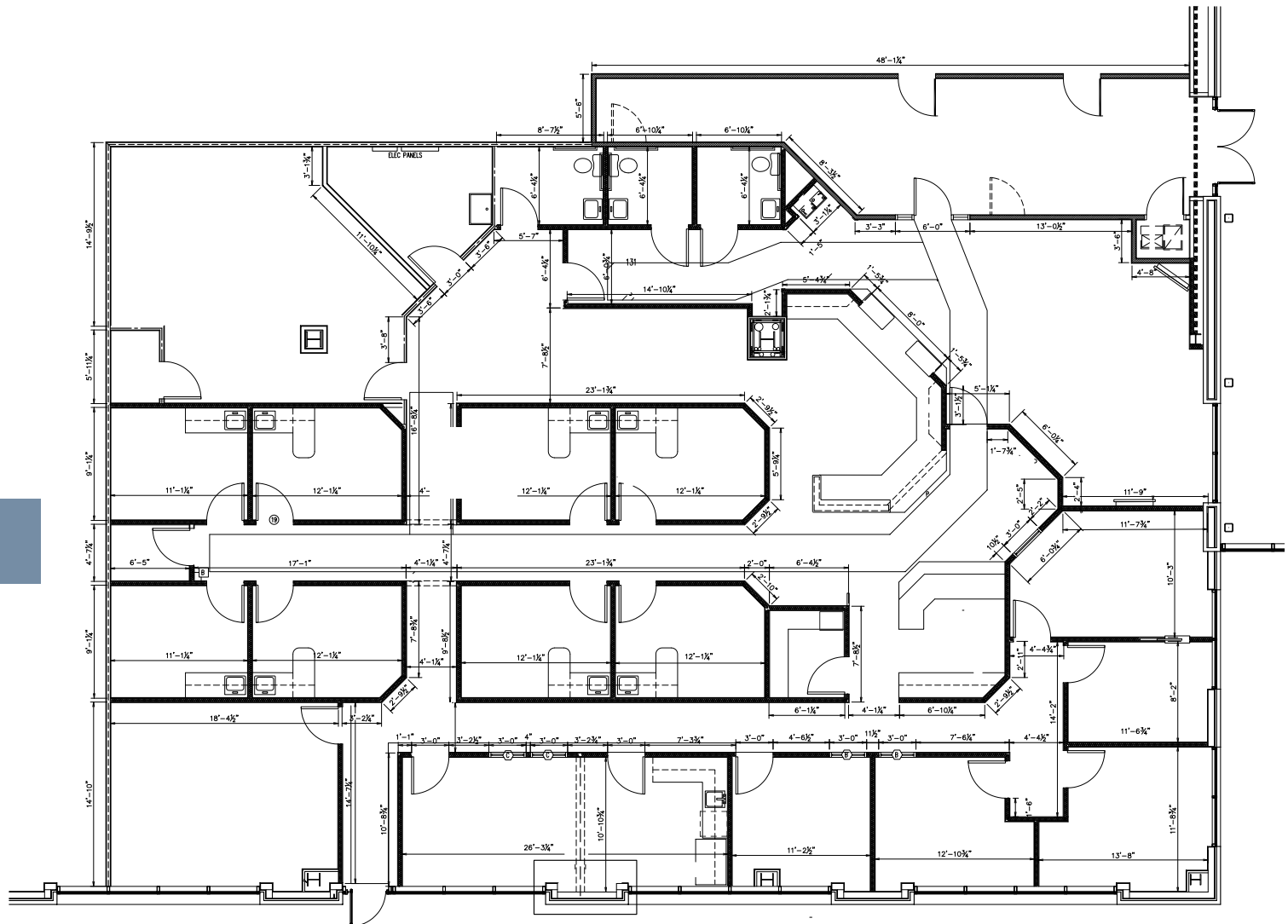
SPEC SUITE

BUILDING 170 FLOOR PLAN

SUITE 103: 5,077 SF

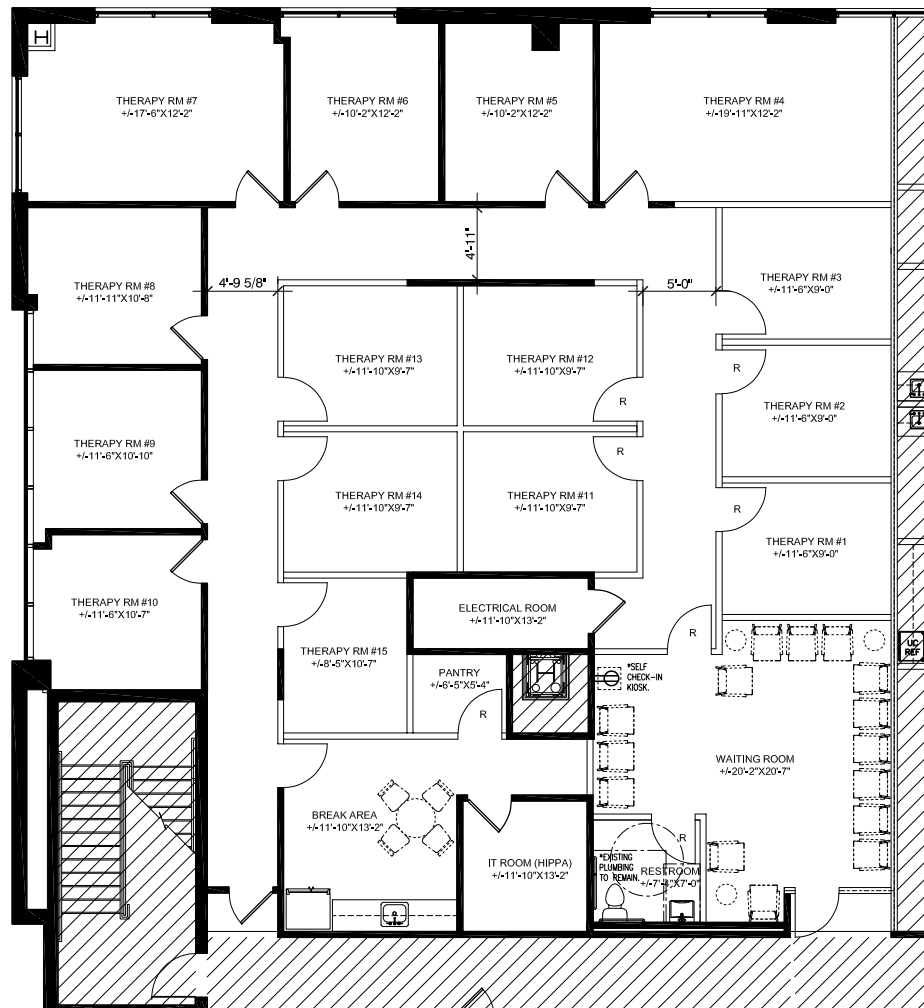
SUITE 103:
5,077 SF

[VIRTUAL TOUR](#)



BUILDING 170 FLOOR PLAN

SUITE 207: 4,063 SF

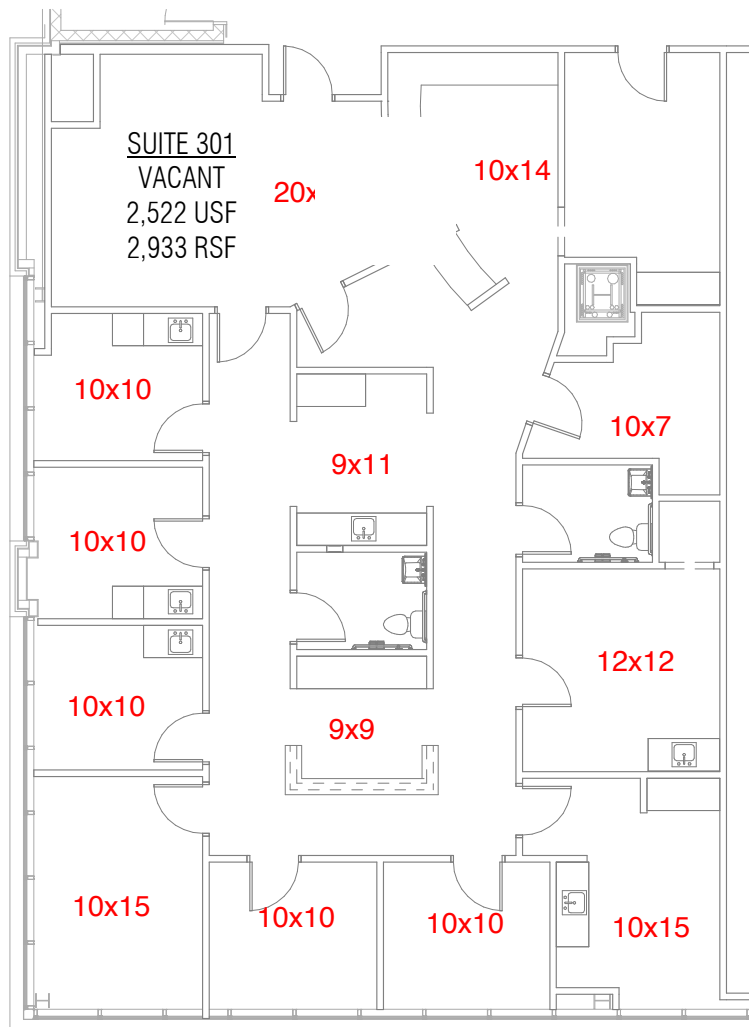


**SUITE 207:
4,063 SF**

VIRTUAL TOUR

BUILDING 170 FLOOR PLAN

SUITE 301 | 2,933 SF



SUITE 301:
2,933 SF

[VIRTUAL TOUR](#)

AREA MAP

