



OFFICE SPACE AVAILABLE FOR LEASE JUST BLOCKS FROM THE BEACH



127 BROADWAY, SANTA MONICA, CA 90401

SUITES AVAILABLE

SUITE 200: Approximately 816 square feet at \$2,700 per month, Modified Gross

SUITE 203: Approximately 257 square feet at \$925 per month, Modified Gross

SUITE 204: Approximately 271 square feet at \$1,325 per month, Modified Gross

SUITE 208: Approximately 258 square feet at \$1,325 per month, Modified Gross

PARKING: City structures

TERM: 6 months - 5 years

AVAILABLE: Immediately

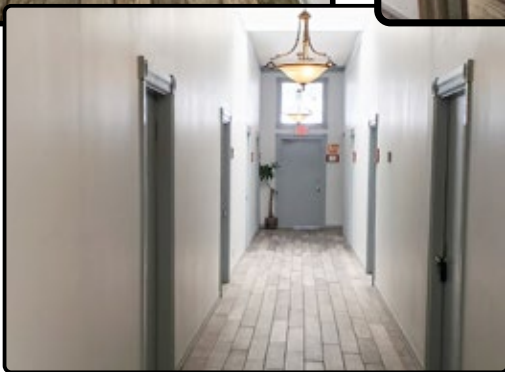
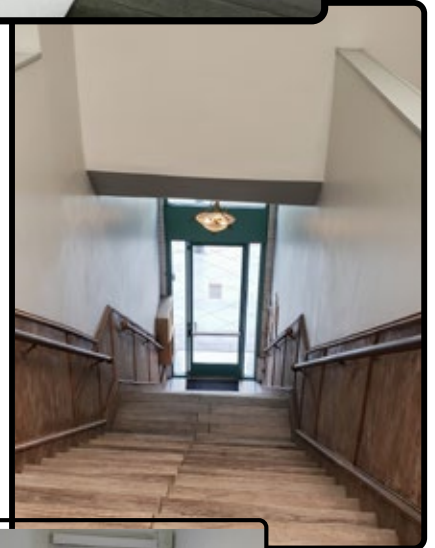
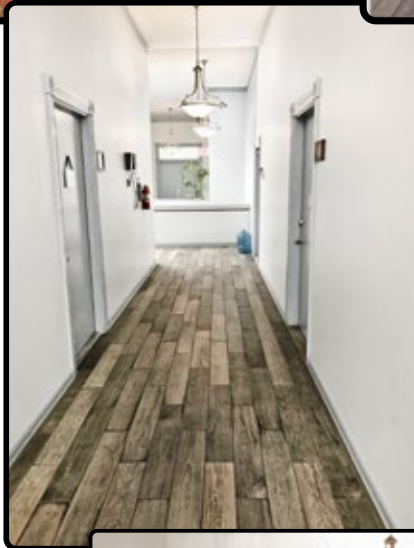
- Very desirable location for office space in Santa Monica
- Historic building with high ceiling and hardwood floors
- Operable windows with ocean views
- Numerous restaurants, shops and banks within walking distance
- Convenient access to Third Street Promenade and the beach

ARTHUR PETER
310.395.2663 x101
ARTHUR@PARCOMMERCIAL.COM
LIC# 01068613

GREG ECKHARDT
310.395.2663 x103
GECKO@PARCOMMERCIAL.COM
LIC# 01255469

1250 6th St., #303, Santa Monica, CA 90401 • 310.395.2663 • www.parcommercial.com

PROPERTY PHOTOS

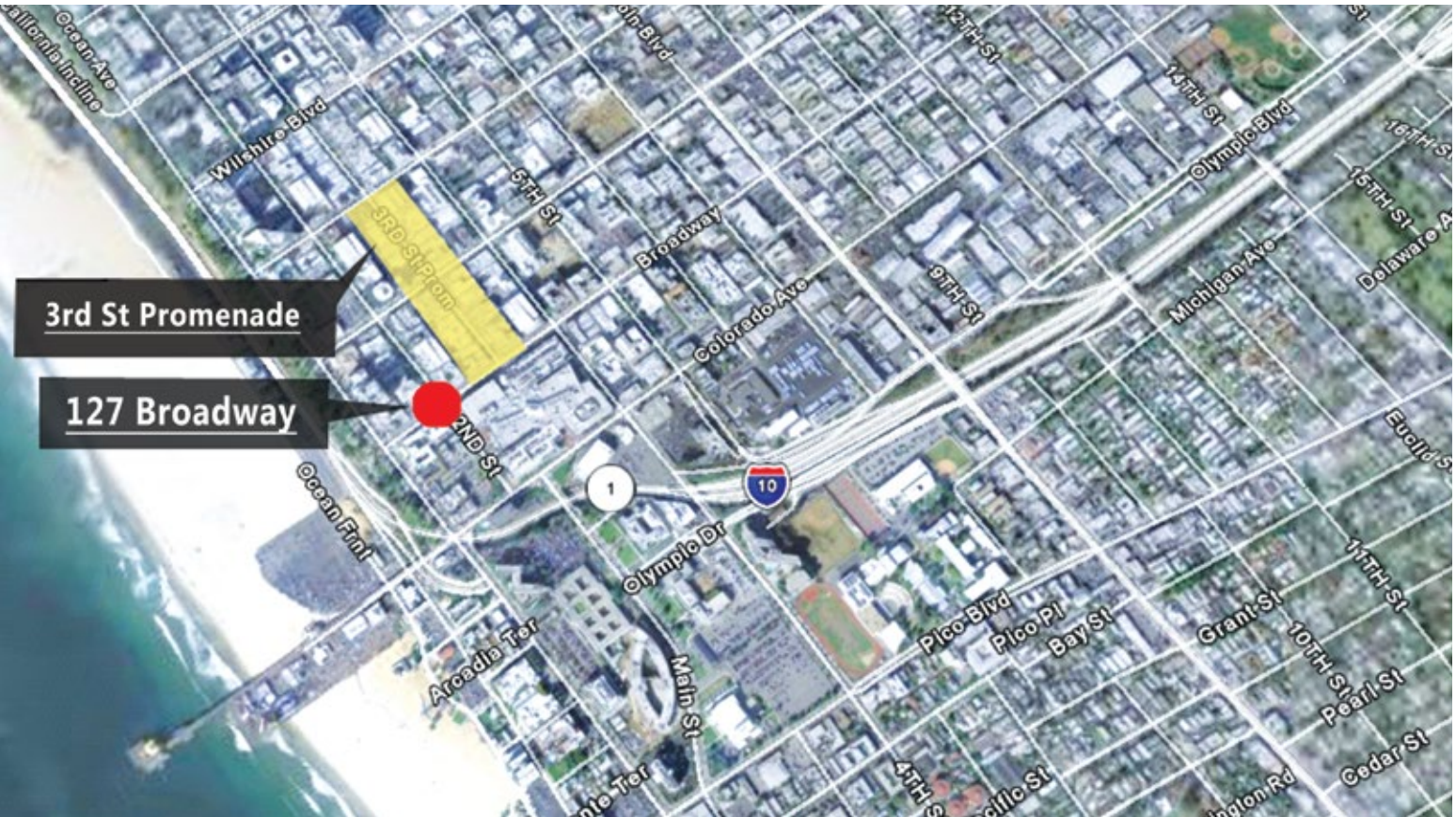
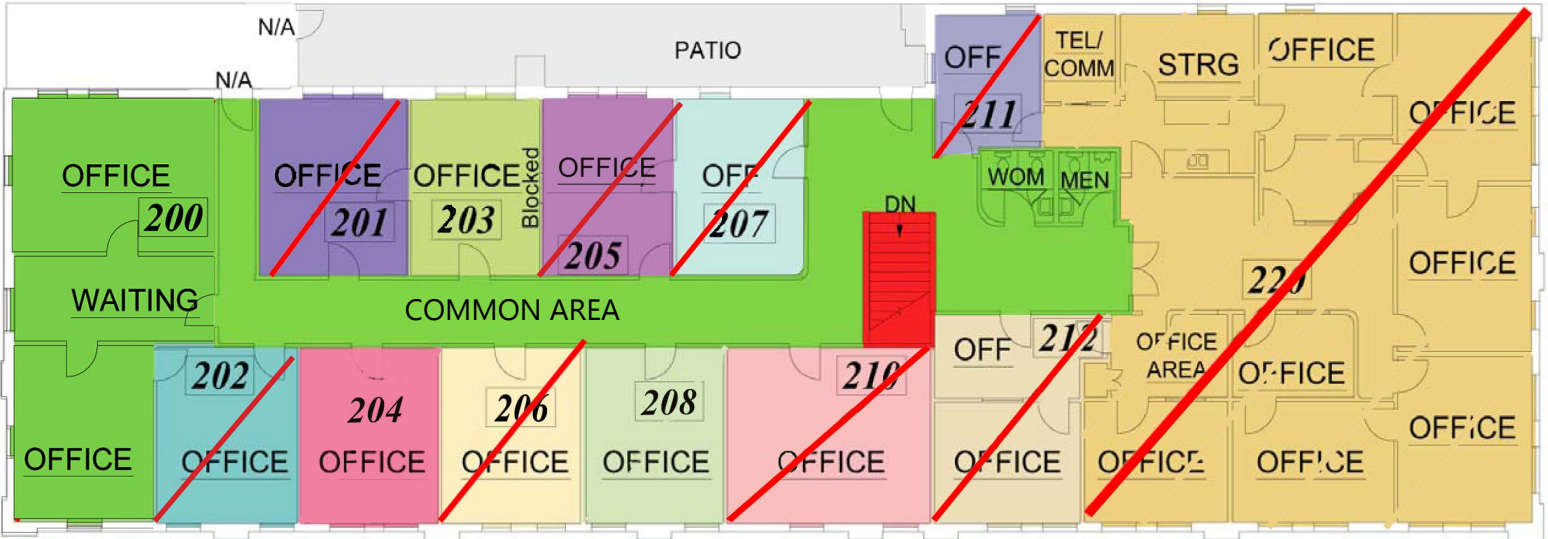


ARTHUR PETER
310.395.2663 x101
ARTHUR@PARCOMMERCIAL.COM
Lic# 01068613

GREG ECKHARDT
310.395.2663 x103
GECKO@PARCOMMERCIAL.COM
Lic# 01255469



127 BROADWAY FLOOR PLAN

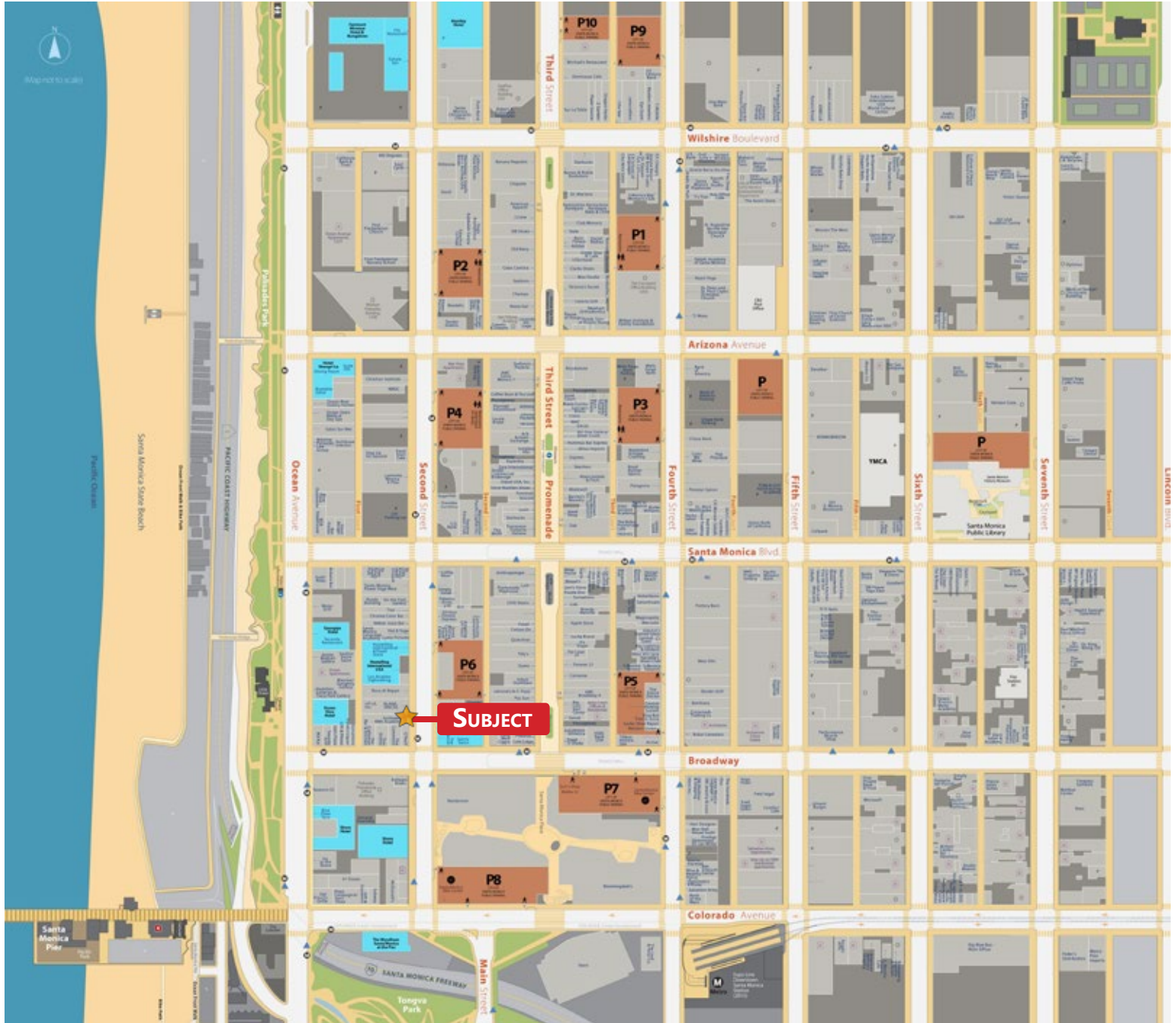


ARTHUR PETER
310.395.2663 x101
ARTHUR@PARCOMMERCIAL.COM
Lic# 01068613

GREG ECKHARDT
310.395.2663 x103
GECKO@PARCOMMERCIAL.COM
Lic# 01255469



AREA MAP



ARTHUR PETER
310.395.2663 x101
ARTHUR@PARCOMMERCIAL.COM
Lic# 01068613

GREG ECKHARDT
310.395.2663 x103
GECKO@PARCOMMERCIAL.COM
Lic# 01255469

