

RETAIL | FOR SALE  
**\$1,200,000**

E Michigan Ave 27,216 VPD

# OPERATING CAR WASH

660 E MICHIGAN AVENUE  
SALINE, MICHIGAN

**CBRE**



# PROPERTY HIGHLIGHTS

**OPERATING CAR  
WASH ON 1.37 ACRES  
OF LAND**

**LOCATED ALONG E  
MICHIGAN AVENUE  
WITH TRAFFIC  
COUNTS EXCEEDING  
27,000 VPD**

**SPA-1,  
EAST MICHIGAN  
DEVELOPMENT ZONE**

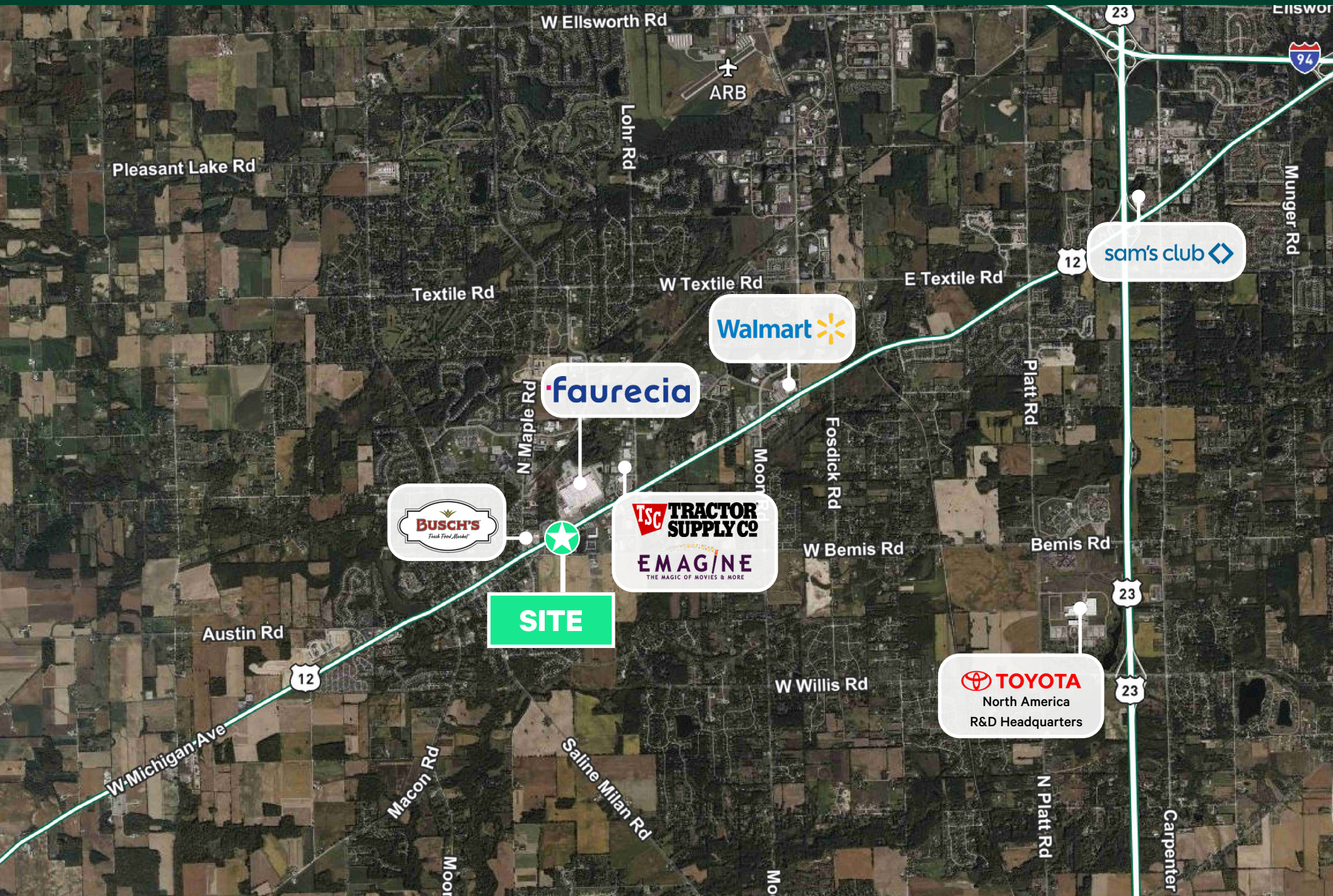
**NEARBY RETAILERS  
INCLUDE WALMART,  
BUSCH'S, CVS,  
TRACTOR SUPPLY CO,  
AND MORE**

**TUNNEL LENGTH:  
90 FT**  
  
**# OF EXISTING VACS:  
4**

**2024 TAXES:  
\$18,608.57**



**MACRO** AERIAL





# MICRO AERIAL



faurecia

CVS pharmacy



E Michigan Ave 27,216 VPD





# PROPERTY PHOTOS

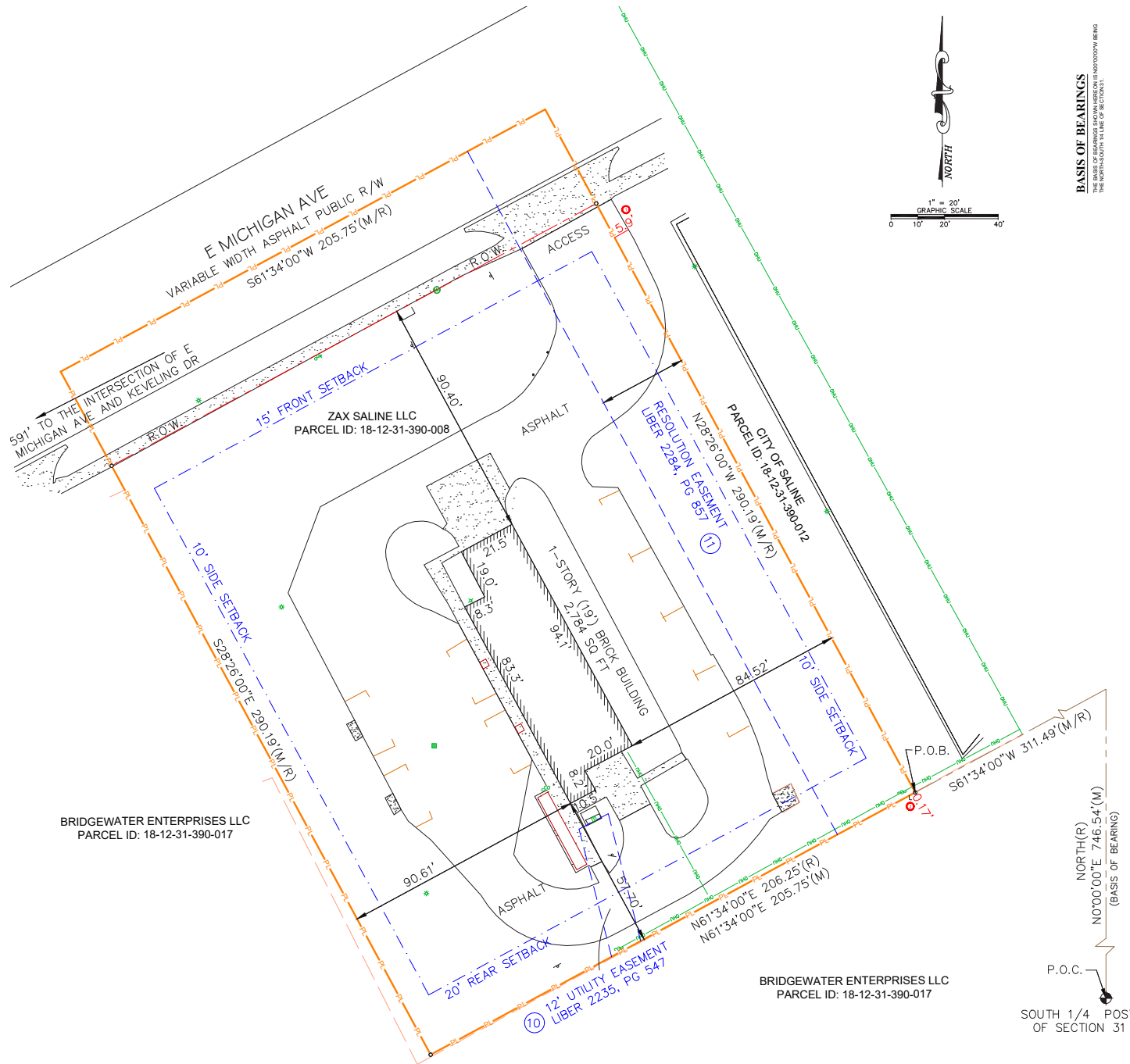


660  
E MICHIGAN  
AVE



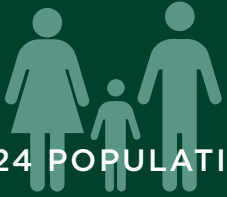


# SITE SURVEY





# DEMOGRAPHIC HIGHLIGHTS



2024 POPULATION

**1 MILE: 4,321**

**3 MILES: 21,353**

**5 MILES: 42,217**

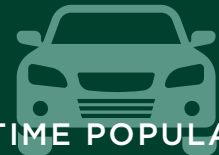


AVERAGE HOUSEHOLD INCOME

**1 MILE: \$106,929**

**3 MILES: \$161,278**

**5 MILES: \$159,235**



DAYTIME POPULATION

**1 MILE: 6,026**

**3 MILES: 21,057**

**5 MILES: 49,109**





## 660 E MICHIGAN AVE, SALINE, MI

SCOTT YOUNG  
Senior Vice President  
+1 248 936 6832  
[scott.young@cbre.com](mailto:scott.young@cbre.com)

MATT CROSWELL  
First Vice President  
+1 248 351 2084  
[matt.croswell@cbre.com](mailto:matt.croswell@cbre.com)

ASHLEY YOUNG  
Vice President  
+1 248 353 5400  
[ashley.young@cbre.com](mailto:ashley.young@cbre.com)

JAKE VORKAPICH  
Transaction Manager  
+1 248 351 2071  
[jake.vorkapich@cbre.com](mailto:jake.vorkapich@cbre.com)

© 2025 CBRE, Inc. All rights reserved. This information has been obtained from sources believed reliable, but has not been verified for accuracy or completeness. You should conduct a careful, independent investigation of the property and verify all information. Any reliance on this information is solely at your own risk. CBRE and the CBRE logo are service marks of CBRE, Inc. All other marks displayed on this document are the property of their respective owners, and the use of such logos does not imply any affiliation with or endorsement of CBRE. Photos herein are the property of their respective owners. Use of these images without the express written consent of the owner is prohibited.

**CBRE**