

# ICONIC HOLLYWOOD VENUE



1623 1/2 N Cahuenga Blvd,  
Los Angeles, CA

FOR LEASE







# OVERVIEW & HIGHLIGHTS

An iconic and newly renovated 4,325 SF venue in the heart of Hollywood, this legendary space comes with a coveted Type 48 liquor license and live entertainment permissions—ideal for nightlife, music, or performance-driven concepts. Long celebrated as a launchpad for acclaimed singer-songwriters, the venue offers turnkey infrastructure, a rich cultural legacy, and prime positioning along the vibrant Cahuenga Corridor with strong foot traffic and visibility.

	SIZE: 4,325 SF+ 750 PATIO		10 YEAR + 2 FIVE YEAR
	BASE RENT: \$16,950		NEWLY RENOVATED
	NNN \$2,800		ASKING PRICE: INQUIRE WITH BROKER
	3% ANNUAL INCREASE		FOR ALL FFE AND TYPE 48 LICENSE, PLEASE INQUIRE WITH BROKER.









# NEIGHBORHOOD



gwen

GMR

THE SPOTLIGHT

**stout**  
burgers&beers

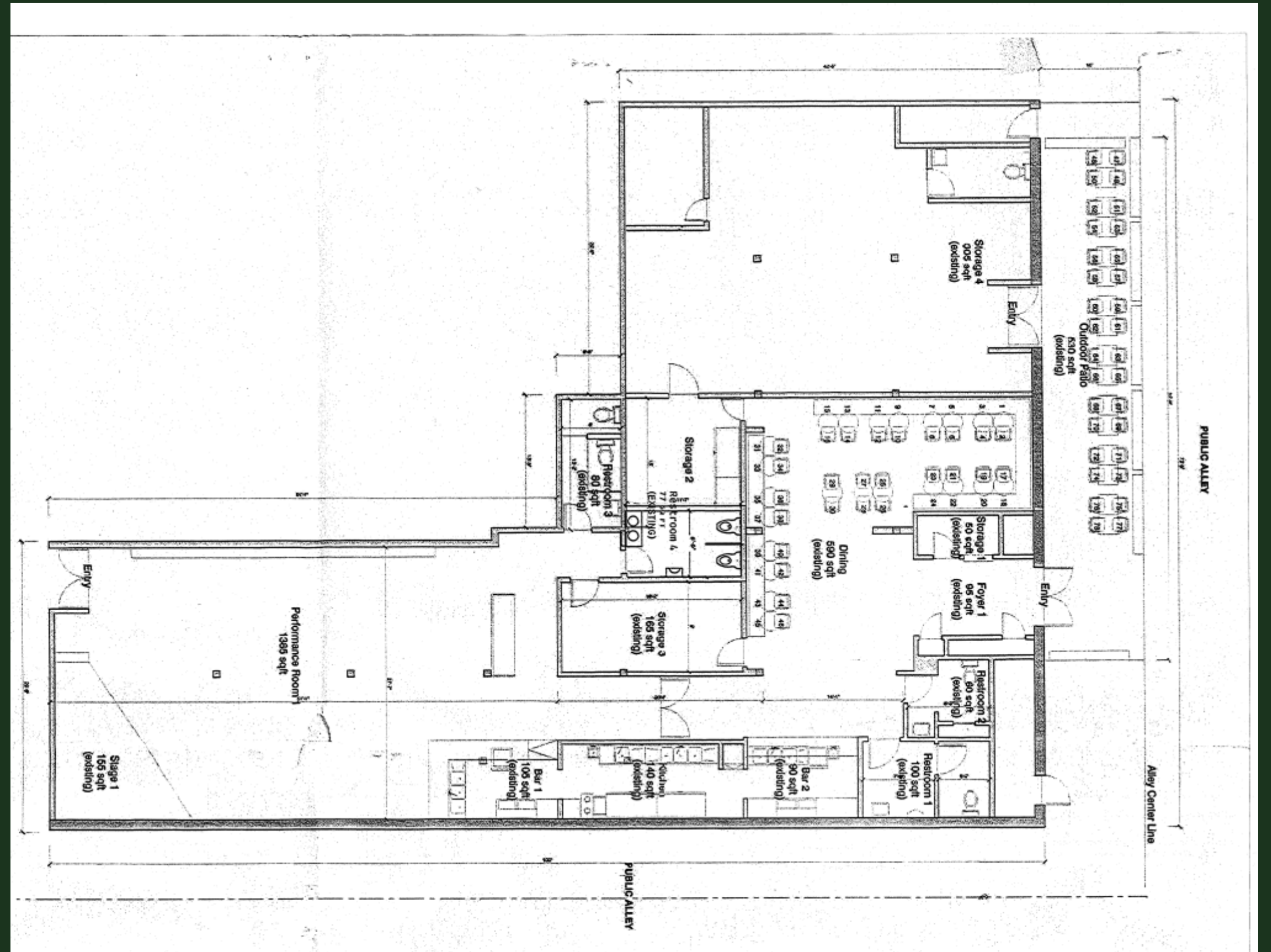
DESERT  
D.5.A  
SPOT



superba

Bar lis

SIZE: 4,325 SF





# CONTACT



**LORENA TOMB**

213.277.7247 X 1

[LORENA@URBANLIMERE.COM](mailto:LORENA@URBANLIMERE.COM)

BRE# 01894475

