

2217 E 9TH ST

10K SQ. FT. \$13,333/MO.



THE TASK TEAM

RESIDENTIAL ► COMMERCIAL ► NEW CONSTRUCTION

SETH TASK, TEAM LEADER

CRS, GREEN, C2EX, CNHS, AHWD

2024 PUBLIC & FEDERAL ISSUES LIAISON, NATIONAL ASSOC. OF REALTORS®

2023 DIRECTOR, NATIONAL ASSOC. OF REALTORS®

2021 PRESIDENT, OHIO REALTORS®

216.276.1626 (CELL) | SEHTASK@TASKHOMES.COM

**BERKSHIRE
HATHAWAY**
HOMESERVICES

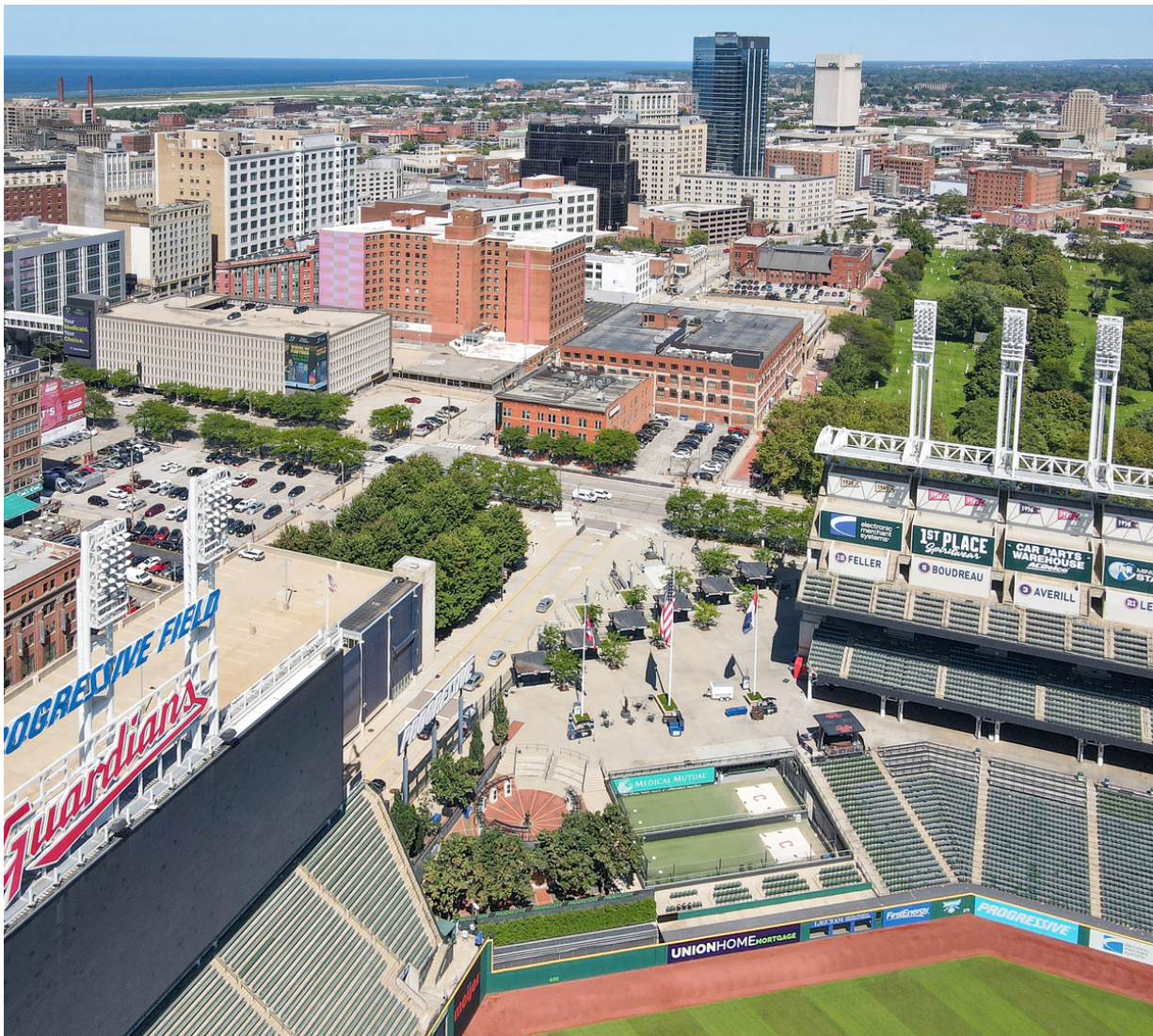
PROFESSIONAL
REALTY



LOCATION

2217 E 9 ST

Incredible office space with approximately 10,000 square feet in the historic Utica Building. Situated on E. 9th Street in the heart of Cleveland's Gateway district across from Progressive Field. Enjoy the view of home plate from the office!



LOCATION

2217 E 9 ST



Walk Score
92

Walker's Paradise

Daily errands do not require a car.

Transit Score
76

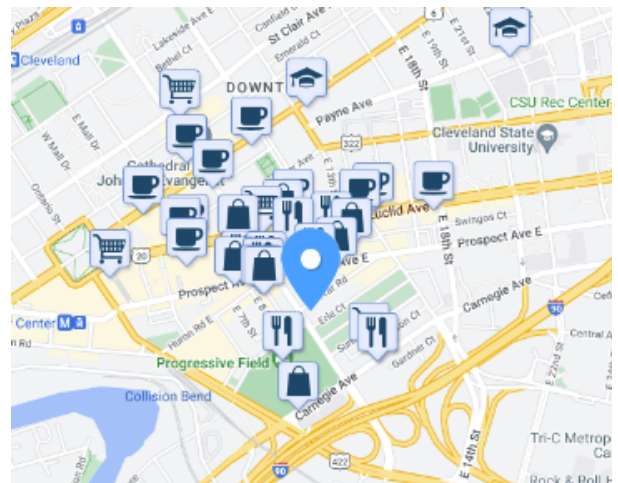
Excellent Transit

Transit is convenient for most trips.

Bike Score
66

Bikeable

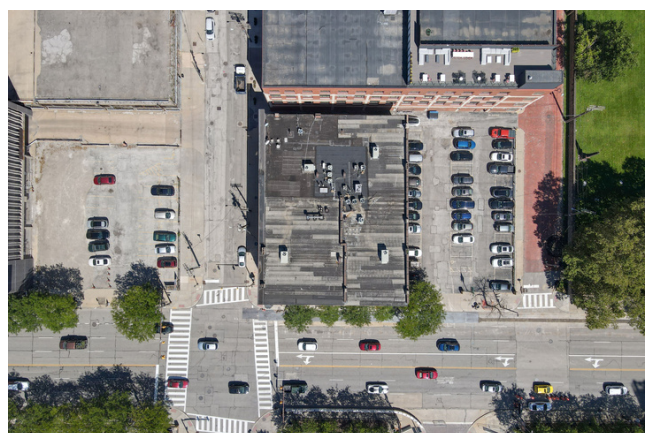
Some bike infrastructure.



EXTERIOR

2217 E 9 ST

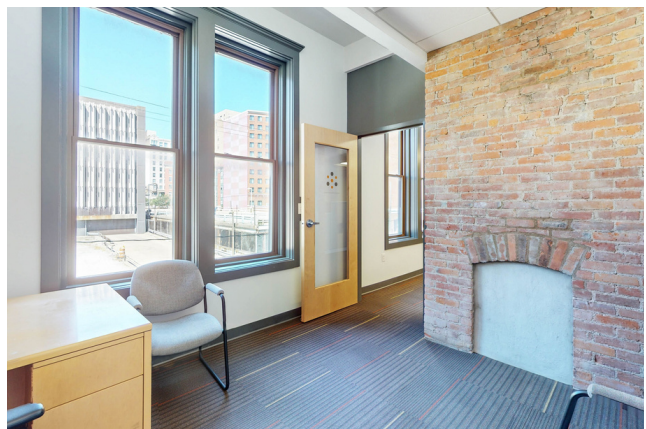
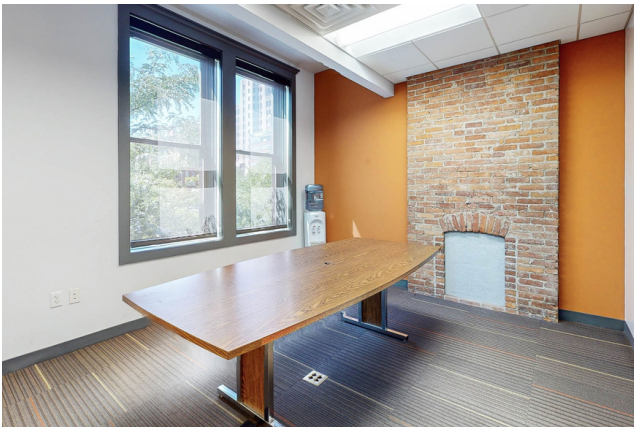
Parking available for lease in rear neighboring garage or lot next to building.



INTERIOR

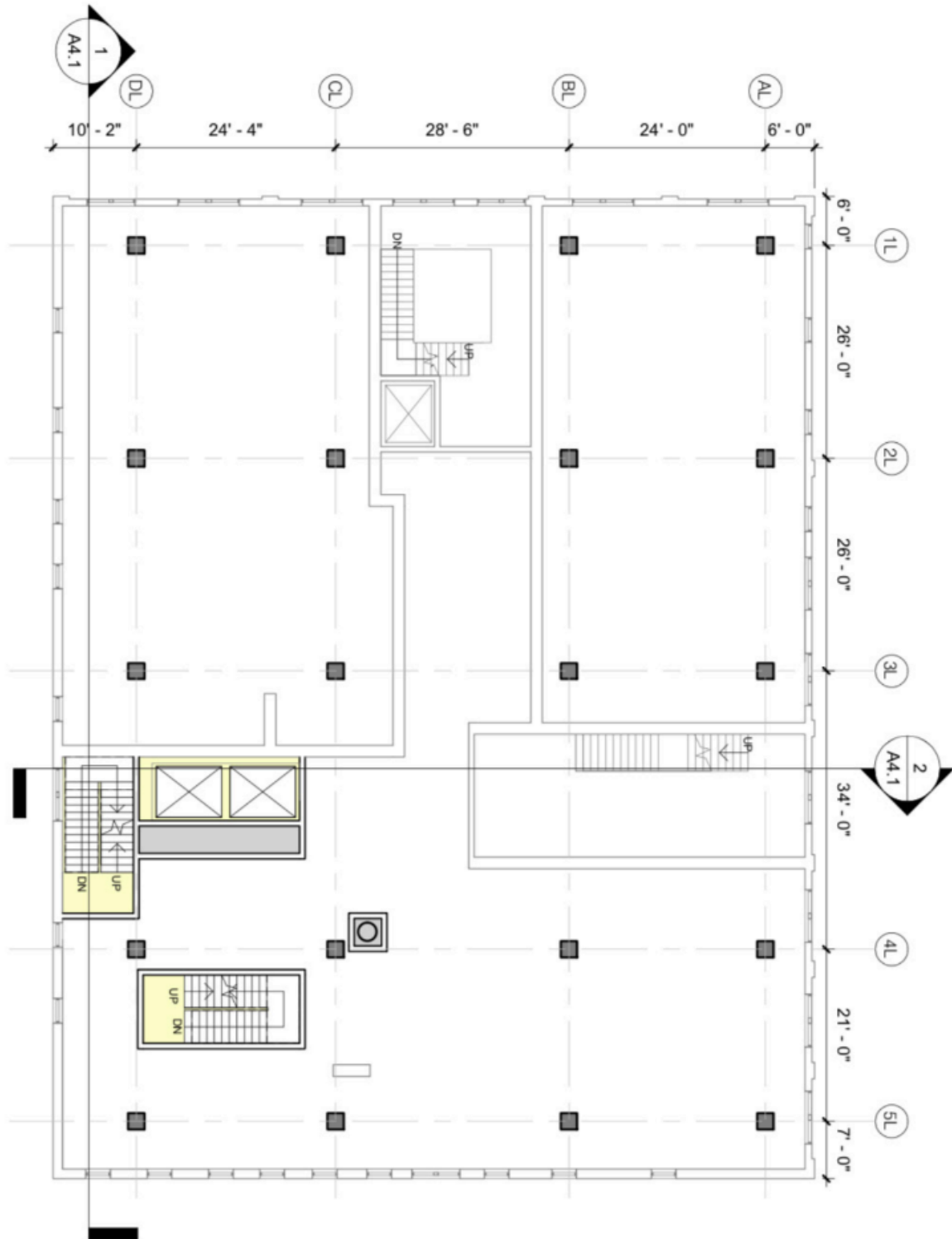
2217 E 9 ST

Modern finishes and an excellent floor plan, with window lined exterior offices, open bullpen, conference room, updated kitchenettes and reception area. Roughly 10,000 square feet.



FLOORPLAN

2217 E 9 ST





CONTACT US

SETH TASK
216.276.1626 (CELL) | SETHTASK@TASKHOMES.COM

**BERKSHIRE
HATHAWAY**
HOMESERVICES

PROFESSIONAL
REALTY

THE
TASK TEAM
REALTORS

 COMMERCIAL DIVISIONSM