

SHARED OFFICE SUBLEASE

3141 FAIRVIEW PARK DRIVE, SUITE 500
FALLS CHURCH, VIRGINIA 22042



- \$20.00 PSF FULL SERVICE
- PRIME CLASS A SHARED SWING SUBLET SPACE IN FAIRVIEW PARK OFFICE BUILDING
- NON-DEMISED SHARED SUITE
- FLEXIBLE LEASE TERMS THRU 12/31/2023
- SHORT TERM TENANCY ALSO AVAILABLE
- 2,000 SF TO 6,560 SF - PART OF 5TH FLOOR
- FULLY FURNISHED - "PLUG & PLAY" SPACE
- FREE COVERED AND SURFACED PARKING AVAILABLE - 3.6 SPACES PER 1,000 SF
- MARRIOTT HOTEL NEXT DOOR
- CAFÉ NATILEE GROUND FLOOR DELI
- SEE "AS-BUILT" PLAN AND PHOTOS ATTACHED



JOHN LENCH, CCIM
JLENCH@CGR-INC.COM
202-716-0155

THOMAS HERTEL
THERTEL@CGR-INC.COM
703-544-1013 · EXT 118

Exclusive Listing By:

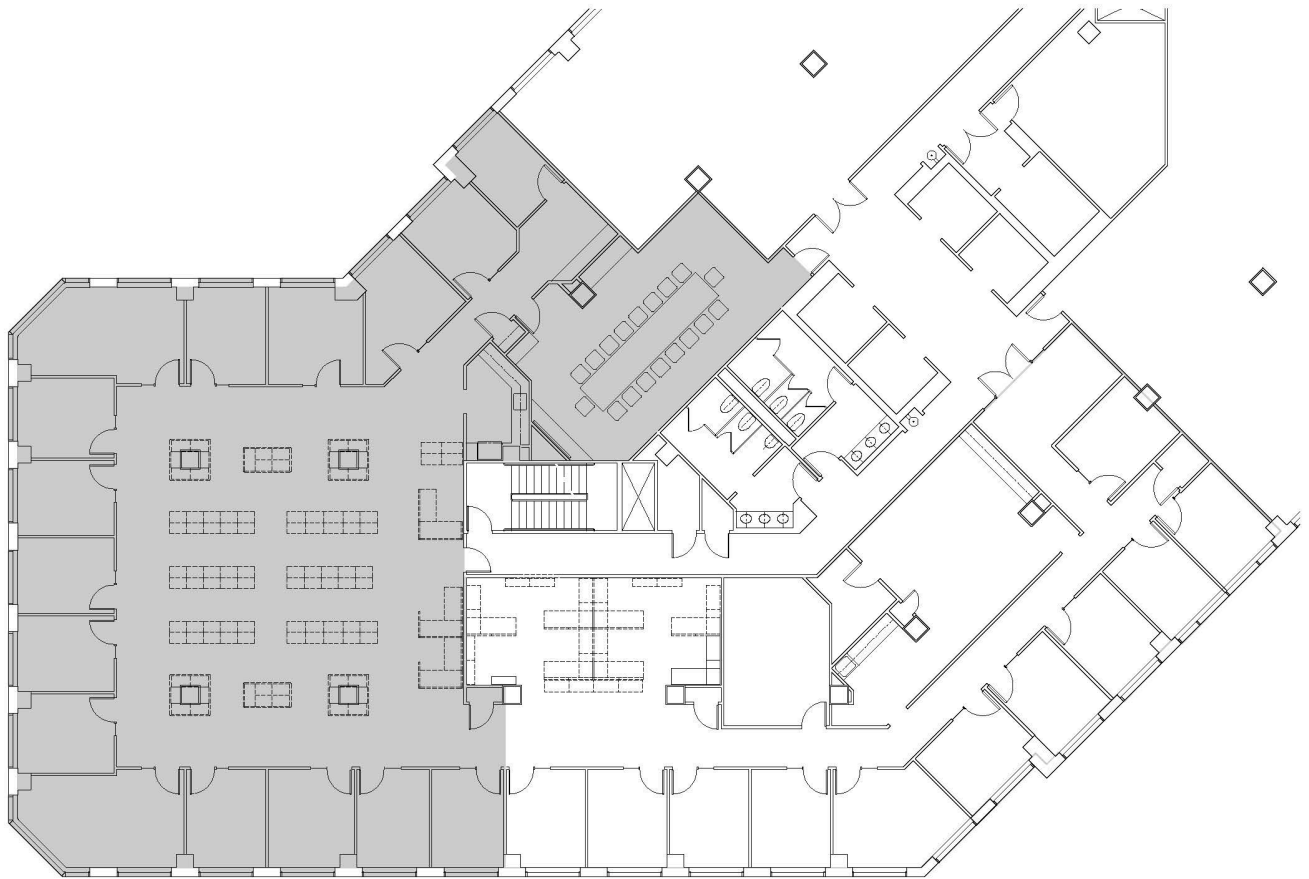
CGR
COMMERCIAL GROUP REALTY
www.cgr-inc.com

OFFICE SUBLEASE

3141 FAIRVIEW PARK DRIVE, SUITE 500
FALLS CHURCH, VIRGINIA 22042

FLOOR PLAN

Part of 5th Floor - 2,000 SF to 6,560 SF



 Area shaded in gray is approximately 6,560 SF

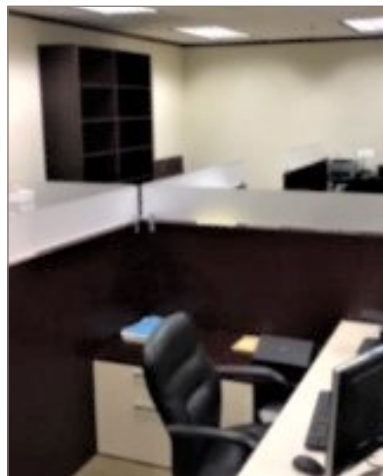
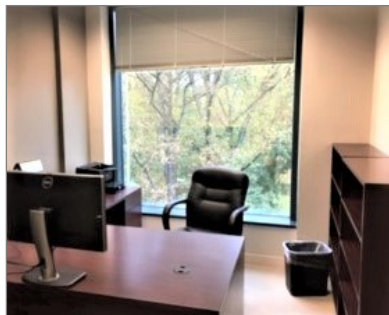
JOHN LENCH, CCIM
JLENCH@CGR-INC.COM
202-716-0155

THOMAS HERTEL
THERTEL@CGR-INC.COM
703-544-1013 · EXT 118

Exclusive Listing By:

CGR
COMMERCIAL GROUP REALTY
www.cgr-inc.com

3141 FAIRVIEW PARK DRIVE, SUITE 500 FALLS CHURCH
OFFICE SUBLEASE FULLY FURNISHED - "PLUG & PLAY"



JOHN LENCH, CCIM
JLENCH@CGR-INC.COM
202-716-0155

THOMAS HERTEL
THERTEL@CGR-INC.COM
703-544-1013 · EXT 118

Exclusive Listing By:

