

# FOR LEASE

**3,770 SF | \$3.15/SF/MO. NNN**

## SHEVLIN HEALTH & WELLNESS CENTER Class A Medical Office

2255 NW Shevlin Park Rd., Suite 130, Bend, OR 97703



### PROPERTY DETAILS

<b>Suite 130:</b>	3,770 SF (Reception area, six exam rooms, four private offices, a nurse station, break room and storage)
<b>Lease Rate:</b>	\$3.15/SF/Mo. NNN
<b>NNNs:</b>	Est. at \$0.94/SF/Mo. <i>(includes gas)</i>
<b>Bldg. Size:</b>	7,358 SF
<b>Zoning:</b>	Commercial Limited (CL)
<b>Parking:</b>	Ample onsite spaces

### HIGHLIGHTS

- Medical/office campus consisting of contemporary buildings in a park-like atmosphere
- Complementary practices and cross referrals
- Signage available on the interior and exterior of the building
- Located in the desirable community of NorthWest Crossing and less than a mile from the COCC campus
- NorthWest Crossing is home to more than 1,500 existing housing units

**Grant Schultz, SIOR, CCIM**  
**Jay Lyons, SIOR, CCIM | Bruce Churchill, Principal Broker**  
600 SW Columbia St., Ste. 6100 | Bend, OR 97702  
**541.383.2444** | [www.CompassCommercial.com](http://www.CompassCommercial.com)

**COMPASS**  
COMMERCIAL

**REAL  
ESTATE  
SERVICES**



# FOR LEASE

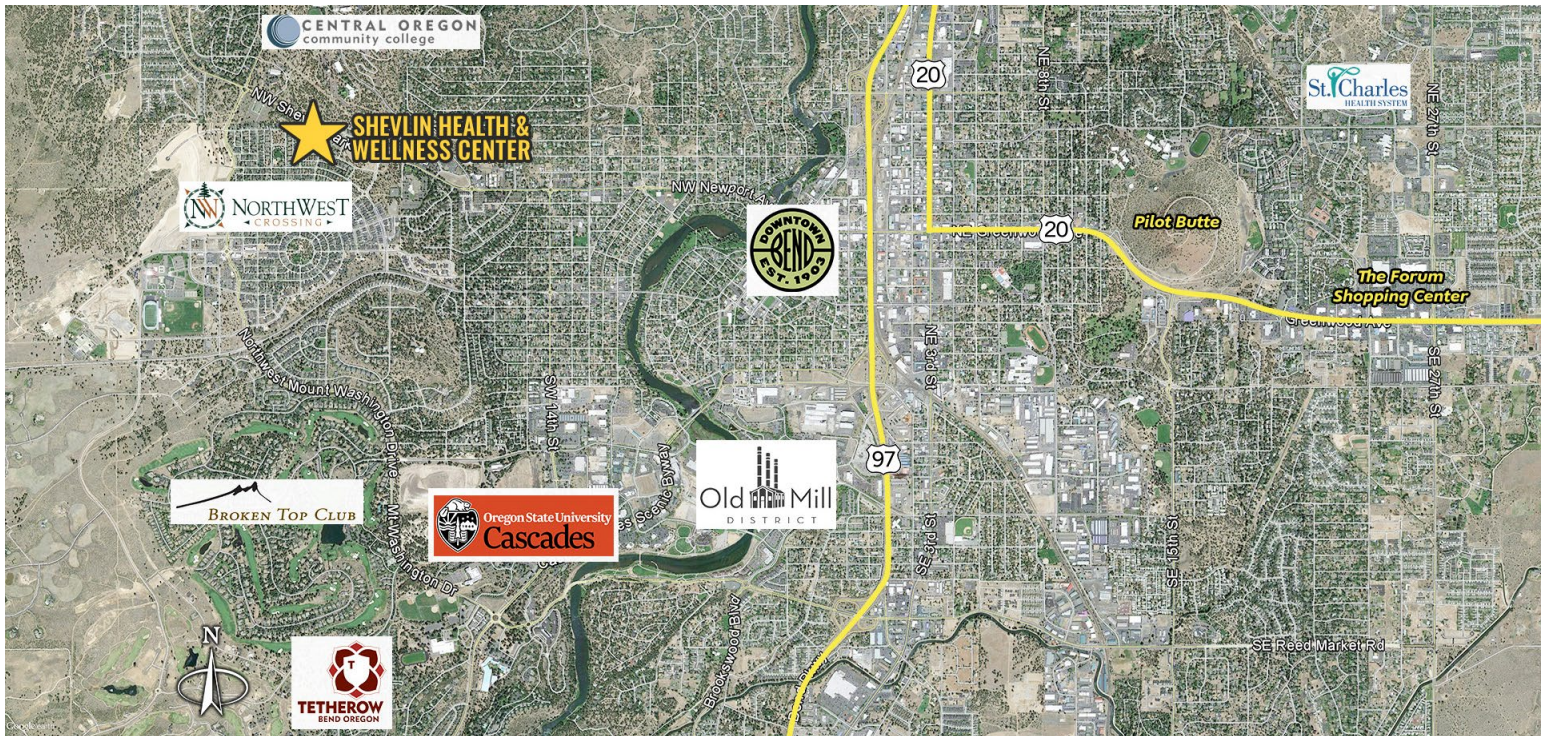
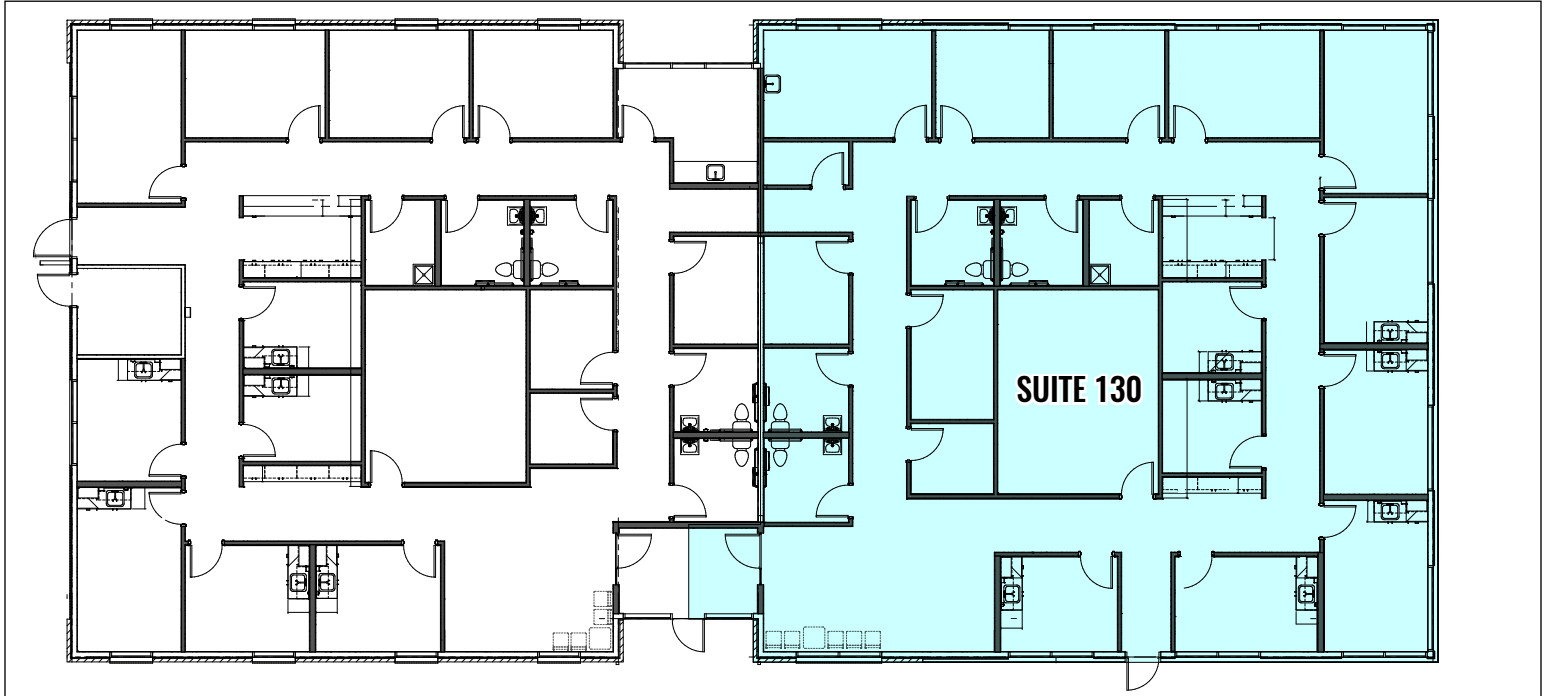
3,770 SF | \$3.15/SF/MO. NNN

## SHEVLIN HEALTH & WELLNESS CENTER

### Class A Medical Office

2255 NW Shevlin Park Rd., Suite 130, Bend, OR 97703

#### FLOOR PLAN



Brokers are licensed in the state of Oregon. This information has been furnished from sources we deem reliable, but for which we assume no liability. This is an exclusive listing. The information contained herein is given in confidence with the understanding that all negotiations pertaining to this property be handled through Compass Commercial Real Estate Services. All measurements are approximate.



**Grant Schultz, SIOR, CCIM**

Broker

Cell 541.480.9873

gschultz@compasscommercial.com



**Jay Lyons, SIOR, CCIM**

Partner, Principal Broker

Cell 541.410.6519

jlyons@compasscommercial.com



**Bruce Churchill**

Principal Broker

Cell 541.280.7560

bchurchill@compasscommercial.com

**COMPASS**  
COMMERCIAL

**REAL ESTATE**  
SERVICES