

CORSA



03 / INTRO

THIS IS YOUR SANCTUARY.

CORSA is a new expression of luxury ownership — private collector's spaces designed with discretion, scale, and possibility in mind. On the prestigious Jersey Shore, where privacy is the ultimate status, CORSA offers a limited collection of bespoke spaces built to house not only your automobiles, but the lifestyle that comes with them.

Here, ownership is absolute. Each space is a blank canvas, elevated by architecture, scale, and proportion, and awaiting the touch of its owner. Whether you envision a showroom gallery, a private retreat, or an entertaining lounge, CORSA gives you the freedom to create without compromise.

1305 BRIELLE AVE



05 / PHILOSOPHY

PRIVACY IS PRESTIGE.

Every CORSA space is designed as an extension of its owner. With soaring volumes, mezzanine retreats, and options for outdoor gardens or terraces, each space invites a highly personal interpretation.

A place to secure, to showcase, and to be among your collection — CORSA is where passion and architecture meet to form something greater — a sanctuary entirely your own. It is the rare freedom to shape a sanctuary entirely your own.

CORSA



07 / THE BUILDING

ARCHITECTURE, SECURITY, AND PRESENCE.

CORSA is more than its individual spaces — it is a statement of design and engineering at the highest level. The exterior architecture is bold and modern, with clean lines and dramatic proportions that reflect the prestige of what lies within. Inside, the private drive aisle sets the tone with flawless finishes, brilliant overhead lighting, and striking garage doors that make arrival as inspiring as ownership itself.

Security is paramount. CORSA has been designed with three layers of controlled access, ensuring peace of mind for even the most discerning collectors. From the moment you arrive at the gate to the final entry into your space, every checkpoint is engineered for discretion, safety, and control. This is protection without compromise — safeguarding not just your collection, but the lifestyle it represents.

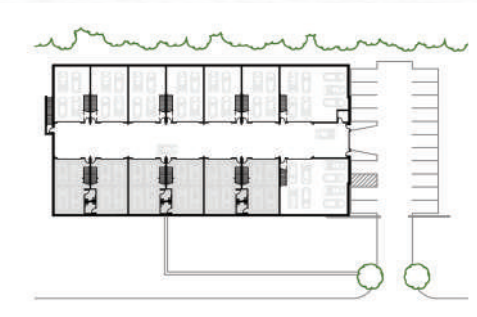
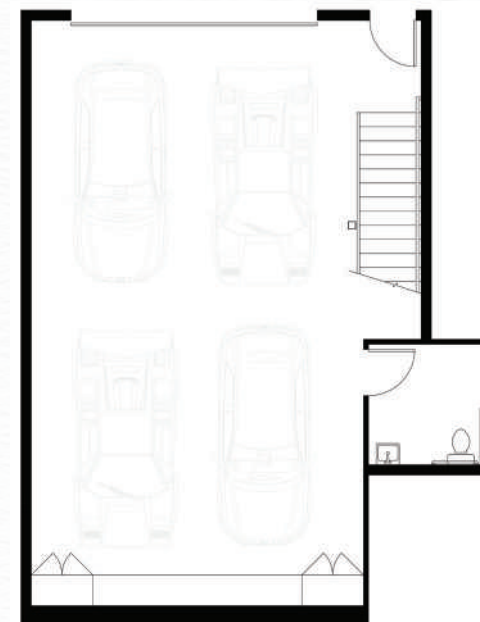


09 / STUDIO

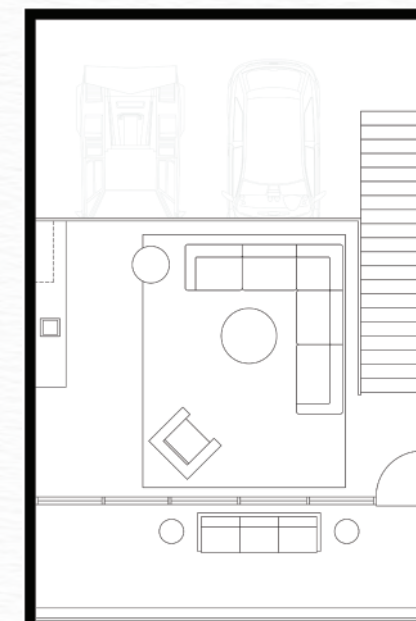
THE FOUNDATION OF CORSA.

The Studio presents the perfect balance of showroom and retreat. With over 1,000 square feet on the ground level, soaring ceilings, and dramatic entry, it is designed to showcase your automobiles in striking fashion. Above, a private mezzanine lounge offers an additional 434 square feet of flexible lifestyle space — ideal for a personal office, an intimate bar, or a place to unwind among your collection. Coupled with an outdoor terrace boasting over 200 square feet of lounge space.

Minimal yet powerful, the Studio provides a pure expression of ownership: secure, adaptable, and exclusively yours. Every detail invites you to design the experience you want — from hosting a private evening with friends to enjoying a quiet retreat above your collection.



Ground	1,042 SF
Mezzanine	434 SF
Terrace	208 SF
Combined	1,684 SF





CORSA



11 / STUDIO + GARDEN

INDOOR ELEGANCE, OUTDOOR ESCAPE.

Building on the Studio, the Studio + Garden extends your lifestyle outdoors with a private, landscaped terrace of over 750 square feet. Imagine stepping from your mezzanine retreat into a manicured garden designed for al fresco dining, cocktail evenings, or simply an open-air lounge bordered by greenery.

The Studio + Garden is more than additional square footage — it's a rare blend of indoor and outdoor luxury. Perfect for collectors who value fresh air, natural light, and the ability to entertain in multiple settings, this space redefines what a car space can be.



13 / SALON

EXPANSION WITHOUT LIMITS.

The Salon elevates the experience with a double mezzanine that stretches across your unit and into the span above the drive aisle, unlocking over 950 square feet of upstairs living. The sheer volume allows for multiple distinct zones: a gym overlooking your cars, a refined office, a private bar, a lounge — or all of the above.

Coupled with over 200 square feet of terrace space, the Salon is designed for those who want more. More flexibility. More possibilities. More room to shape a space for collectors who seek scale without compromise. With striking architectural presence and unmatched adaptability, this is a space for collectors who seek scale without compromise.



Ground	1,042 SF
Mezzanine	958 SF
Terrace	208 SF
Combined	2,208 SF





SCALE
VISION
POSSIBILITY



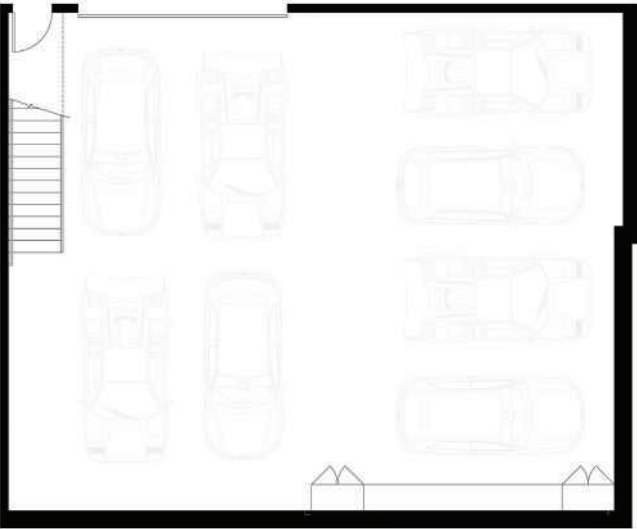
THE PINNACLE OF CORSA.

The CORSA Penthouses are the largest and most commanding of all CORSA spaces. With expansive showrooms below and vast mezzanines above, the Penthouses offer sweeping glass, dramatic ceiling heights, and volumes of space that feel more like private spaces at the pinnacle of design. The ground floor covers over 1,800 square feet and the mezzanine is perched at just under 1,400 square feet with over 380 square feet of terrace space.

Whether conceived as a personal gallery, a full-floor lounge, or an entertaining haven with indoor and outdoor zones, the Penthouses embody the ultimate in freedom and exclusivity. These are the crown jewels of CORSA — where architecture, privacy, and passion converge at their highest expression.



Ground	1,783 / 1,842 SF
Mezzanine	1,396 SF
Terrace	384 SF
Combined	3,563 / 3,622 SF



CURATE.
CREATE.
COMMAND.



CODSA



“LIMITED AVAILABILITY. INFINITE EXPRESSION.”

CORSA