

Presented by:  
Lee & Associates Los Angeles West, Inc.

# FOR SALE

## ± 18,060 SF CREATIVE / PRODUCTION FACILITY



**6151 - 6159 SANTA MONICA BLVD.**  
**LOS ANGELES, CA 90038**



A DIVISION OF



# SPECS & FEATURES

## PREMISES

± 18,060 SF

## SALE PRICE

\$8,950,000 (\$495.57 PSF)

## PARKING

27 Parking Spaces

## APNS

5534-007-014

5534-007-015

## FEATURES

- Power\*: 2000a/240v 3p 4w
- Ground Level Roll Up Door
- Skylights
- Fenced Parking
- Steps Away from Paramount Studios and the Hottest Developments in Hollywood Housing Netflix and its Ecosystem
- Three Blocks from the Larchmont Village Filled with LA's Best Coffee Shops to Unique Stores and Excellent Restaurants



6151 - 6159 SANTA MONICA BOULEVARD

FOR SALE

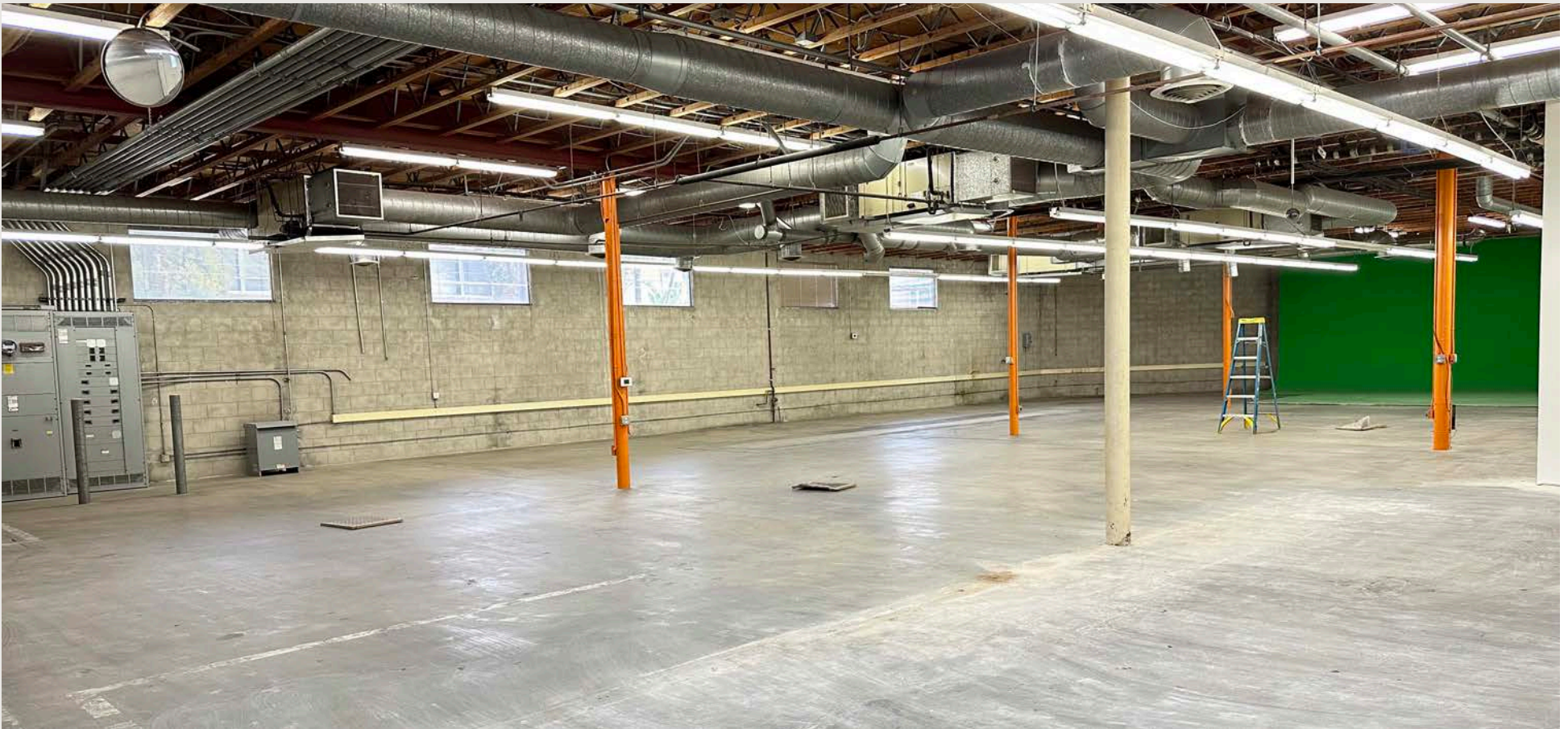
2

No warranty or representation is made to the accuracy of the foregoing information.  
Terms of sale or lease are subject to change or withdrawal without notice.



6151 - 6159 SANTA MONICA BOULEVARD

FOR SALE



6151 - 6159 SANTA MONICA BOULEVARD

FOR SALE



6151 - 6159 SANTA MONICA BOULEVARD

FOR SALE

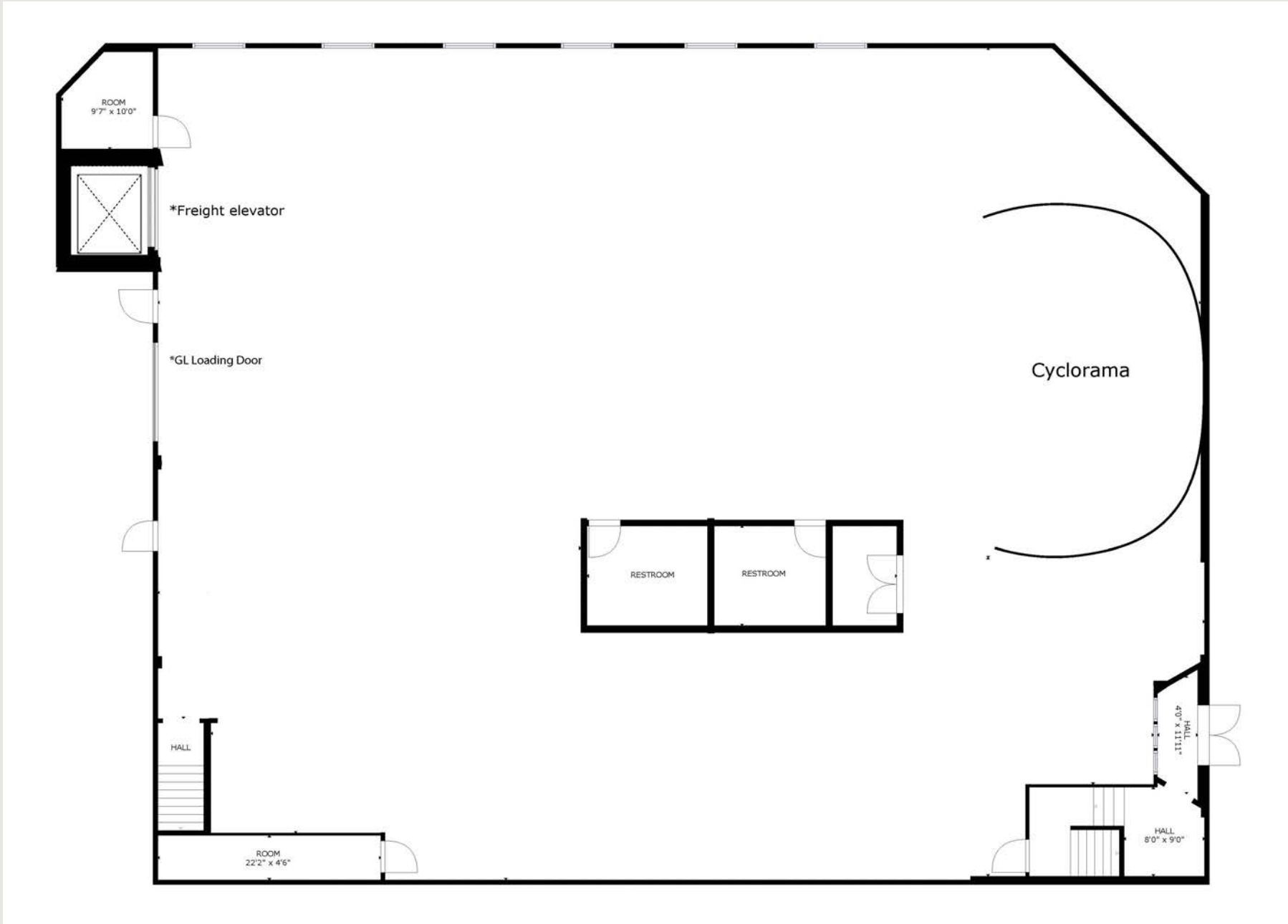
5



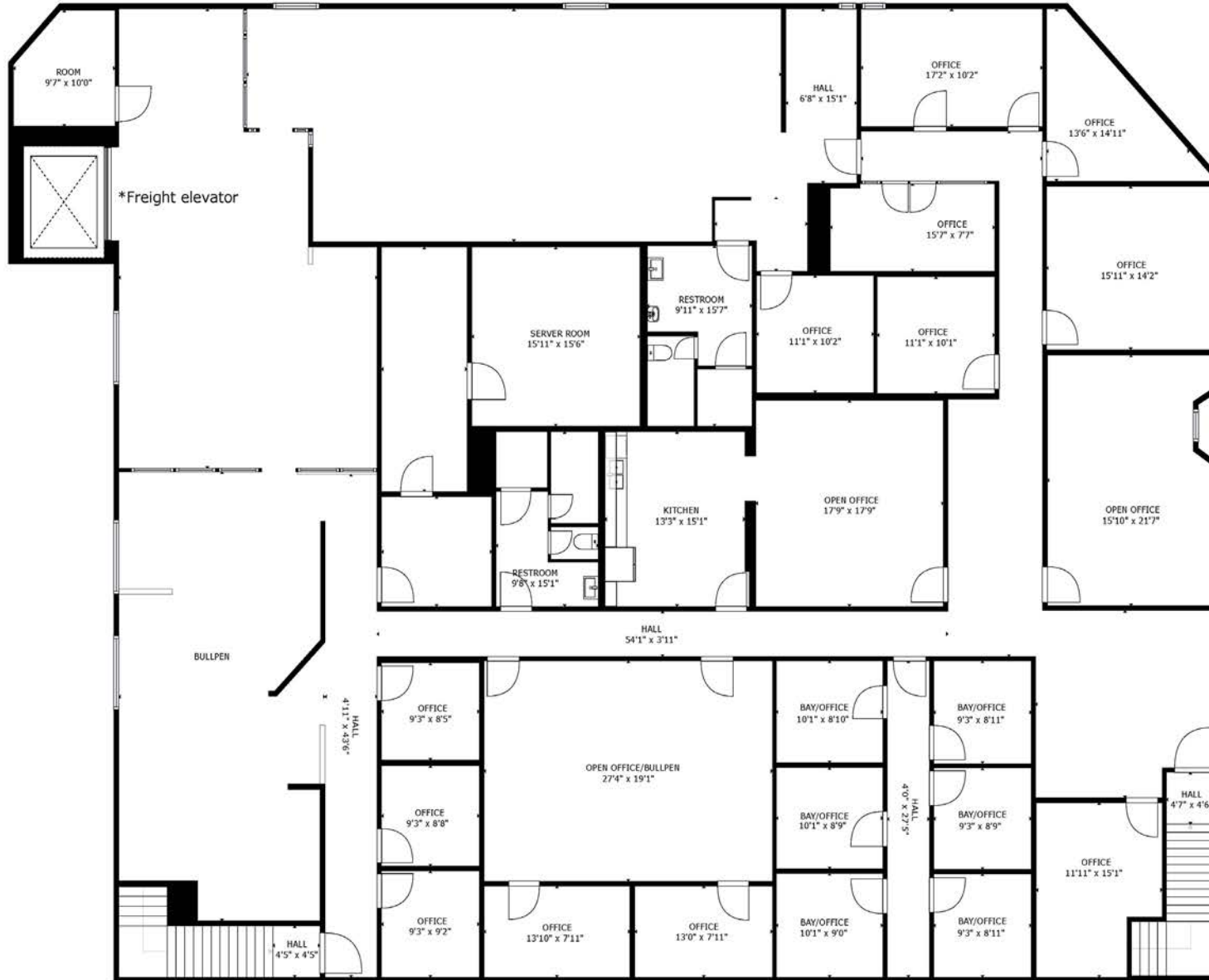
6151 - 6159 SANTA MONICA BOULEVARD

FOR SALE

# FIRST FLOOR PLAN



# SECOND FLOOR PLAN







6151 - 6159 SANTA MONICA BOULEVARD

FOR SALE

# 24' HEIGHT STAGE + PRODUCTION COMPOUND PLAN

**6151-6159 SANTA MONICA BLVD.**

**18,000 SF TO 15,500 PRODUCTION FACILITY**

- Removing second floor area will create an approximately 2,500-3,000 SF stage with 24' clear height adjacent to the ground floor area which houses the mill and wardrobe areas.
- The second floor space removed is the least improved and would not impact the kitchen, offices, podcast areas and is clear of both stairways up and down the front and rear entrances.
- The ground floor rollup door and freight elevator are ideally positioned on the easterly side of the building to support the stage area.
- The second floor landing off the freight elevator (north end) would remain to support moving equipment up and down and a catwalk would remain around the stage area.
- By removing the floor area and configuring for a stage, this would be low cost, high impact alteration and would be arguably value accretive given the number of stage users that need a fully programmed location for shooting commercials, videos along with support areas.
- GROUND FLOOR = Stage, Mill, Wardrobe, Storage
- SECOND FLOOR = Production Offices, Podcast, Kitchen

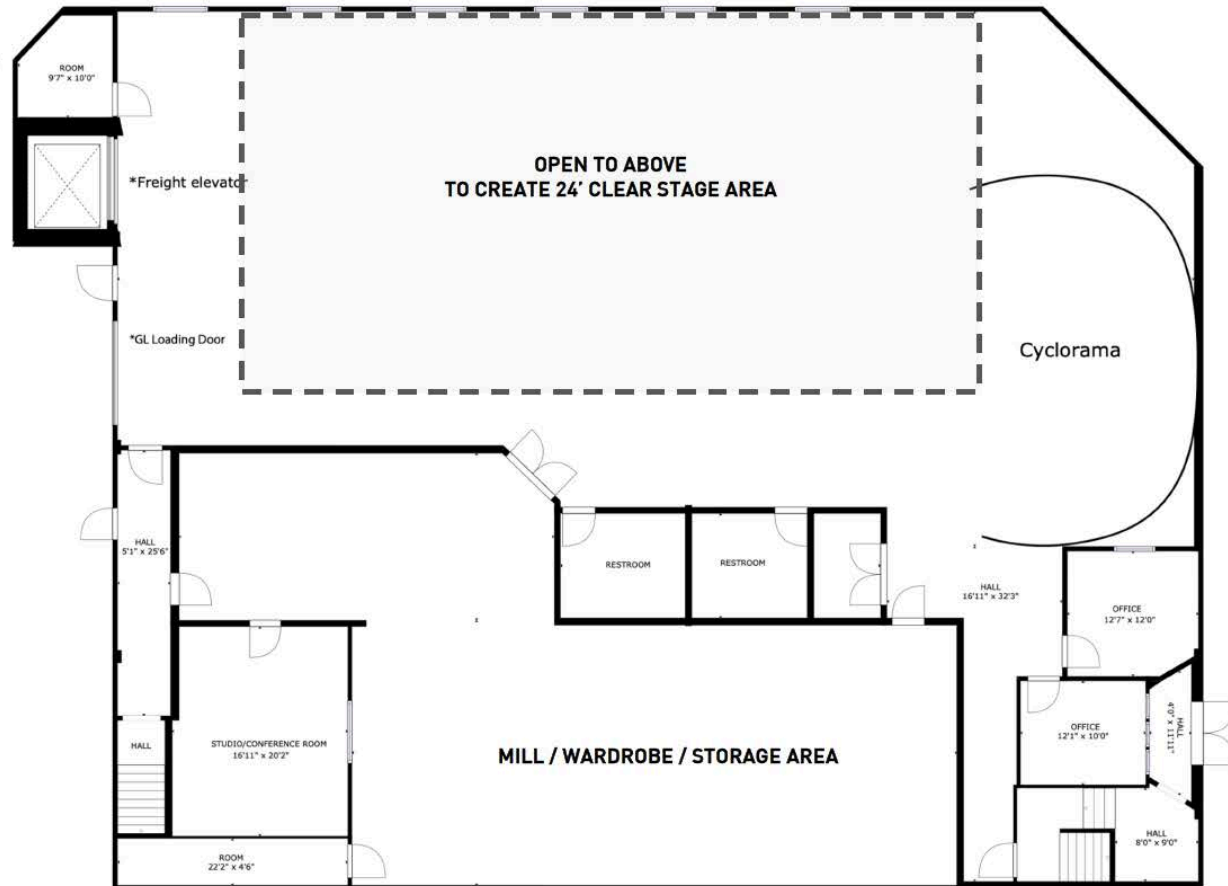


# FIRST FLOOR PLAN

**6151-6159 SANTA MONICA BLVD.**

**18,000 SF TO 15,500 PRODUCTION FACILITY**

- Removing second floor area will create an approximately 2,500-3,000 SF stage with 24' clear height adjacent to the ground floor area which houses the mill and wardrobe areas.
- The remaining ground floor area will continue to complement and support the stage / shooting area.
- The second floor access points, both front and rear will continue to be utilized and are ideally situated to not disturb the shooting and production area.

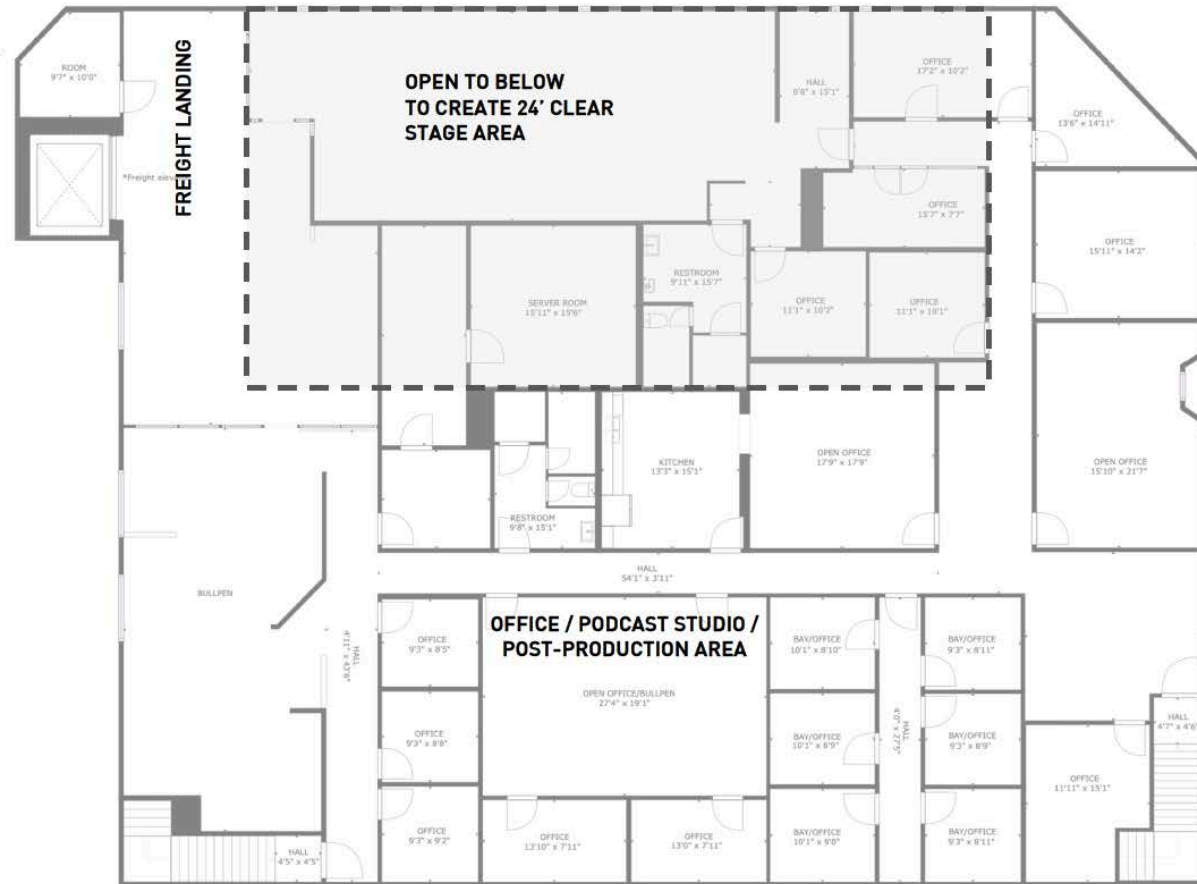


# SECOND FLOOR PLAN

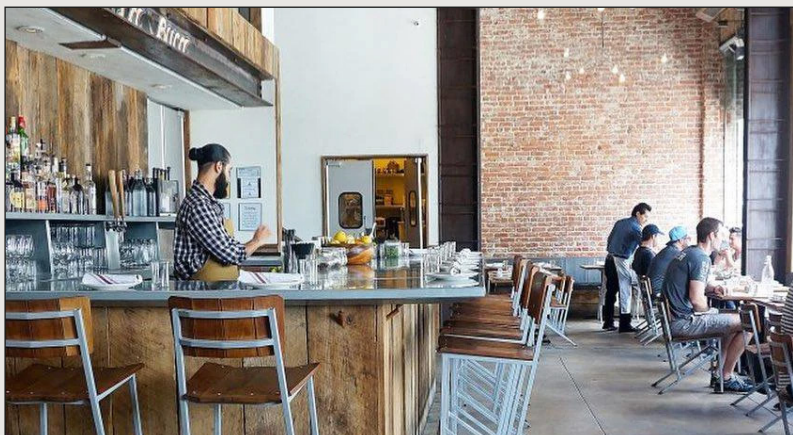
**6151-6159 SANTA MONICA BLVD.**

**18,000 SF TO 15,500 PRODUCTION FACILITY**

- Removing second floor area will create an approximately 2,500-3,000 SF stage with 24' clear height adjacent to the ground floor area which houses the mill and wardrobe areas.
- The remaining ground floor area will continue to complement and support the stage / shooting area.
- The second floor access points, both front and rear will continue to be utilized and are ideally situated to not disturb the shooting and production area.



# NEARBY AMENITIES



# NEARBY DEVELOPMENTS



# NEARBY STUDIOS



1. PARAMOUNT STUDIOS
2. RALEIGH STUDIOS
3. NETFLIX
4. VIACOM
5. SUNSET GOWER STUDIOS
6. ACADEMY OF MOTION PICTUR  
ARTS AND SCIENCES
7. NETFLIX @ ACADEMY ON VINE  
(UNDER CONSTRUCTION)
8. SUNSET BRONSON STUDIOS
9. FUNNY OR DIE
10. TELEVISION CENTER
11. MILK STUDIOS
12. RED STUDIOS
13. SUNSET LAS PALMAS STUDIOS
14. LINE 204 STUDIOS
15. HOLLYWOOD PRODUCTION  
CENTER
16. BLT STUDIOS
17. JIM HENSON COMPANY
18. THE LOT STUDIOS
19. QUIXOTE STUDIOS

For More Information:

## BRAD MCCOY

Principal  
310. 899. 2730  
bmccoy@leewestla.com  
BKR DRE 01938098

## DAVID WILSON

Principal  
310. 899. 2706  
dwilson@leewestla.com  
AGT DRE 00822760

## GEORGE WILSON

Principal  
310. 899. 2738  
gwilson@leewestla.com  
AGT DRE 02090678

## DYLAN MAHOOD, CCIM

Principal  
310. 899. 2706  
dmahood@leewestla.com  
AGT DRE 02027002



## LEE & ASSOCIATES LOS ANGELES WEST, INC.

1508 17th Street, Santa Monica, CA 90404

310.899.2700

leewestla.com

DRE 01222000



A DIVISION OF

**LEE & ASSOCIATES**