



# 717 Allens Avenue

## Sublease Available

**CBRE**



# Campus Description

Situated just two miles south of downtown Providence, Innovation @ The Port is a ±346,000 SF campus comprised of creative office, medical and life science space spread across a 12-building campus with a strong existing base of corporate neighbors. The park is conveniently located, offering easy access to major routes, including Interstates 95 and 195, public transportation and ample surface parking. Innovation @ The Port is also located less than one mile from Rhode Island Hospital's main campus and benefits from the proximity to shops, restaurants and retail amenities. The Port is currently the home to many innovative medical and technology companies.

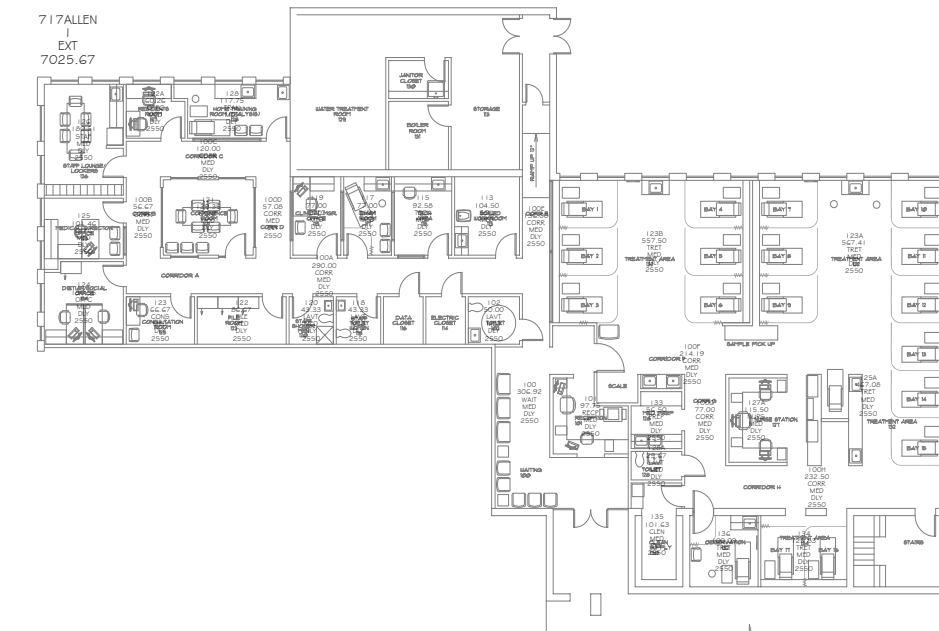


# 717 Allens Avenue

- ±17,470 SF
- 9/30/29 Expiration
- Plug + play opportunity
- Nearby parking

# Sublease Opportunity

CBRE, Inc. is pleased to offer the opportunity to sublease ±146,175 RSF at Innovation @ The Port in Providence, Rhode Island. The sublease opportunities range from ±710 SF – ±24,659 SF and total up to ±146,175 SF. There are multiple suites available that are furnished and the variety of sizes meet the depth of the market for tenant demand. Expiration dates vary depending on the suite, with most suites expiring between 2027 and 2029. These spaces are furnished, in excellent condition, and include parking, making this Sublease Opportunity a true plug and play solution.



# Contact Us

Andrew Galvin  
Senior Vice President  
+1 401 330 1915

Hilary Fagan  
Vice President  
+1 401 465 8046

© 2024 CBRE, Inc. All rights reserved. This information has been obtained from sources believed reliable but has not been verified for accuracy or completeness. CBRE, Inc. makes no guarantee, representation or warranty and accepts no responsibility or liability as to the accuracy, completeness, or reliability of the information contained herein. You should conduct a careful, independent investigation of the property and verify all information. Any reliance on this information is solely at your own risk.

The CBRE logo, consisting of the letters "CBRE" in a bold, dark green, sans-serif font.