

FOR SALE

ANGELS CAMP, CA



SUBJECT
PROPERTY

COPELLO DR

651 COPELLO DRIVE

±0.46 AC Parcel for Sale

Located just off Hwy 49

BAE Zoning

Close proximity to new residential development

City sewer, water and electrical services to site

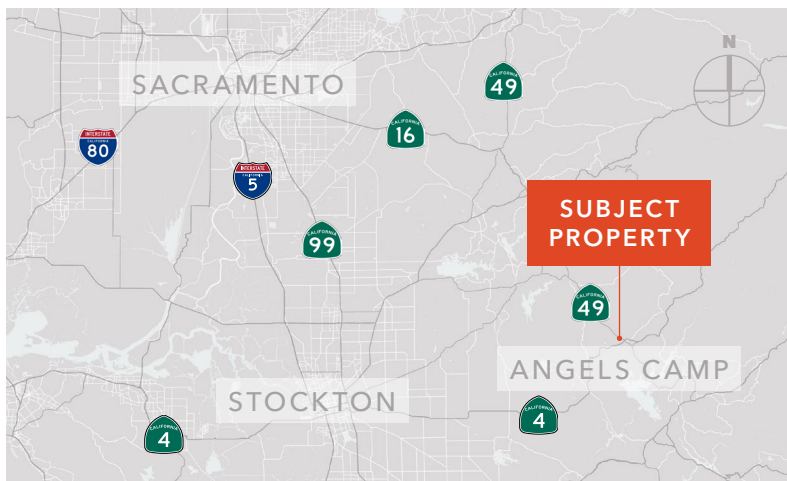
APN# 058-011-003-000

PETER WINTERLING

916.730.7350

peter.winterling@kidder.com

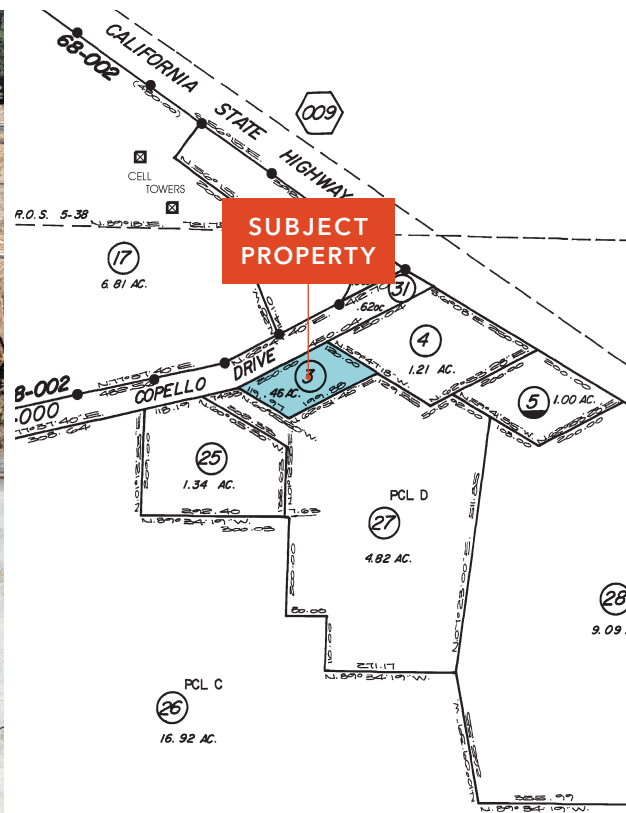
LIC N° 00992375



KIDDER.COM

This information supplied herein is from sources we deem reliable. It is provided without any representation, warranty, or guarantee, expressed or implied as to its accuracy. Prospective Buyer or Tenant should conduct an independent investigation and verification of all matters deemed to be material, including, but not limited to, statements of income and expenses. Consult your attorney, accountant, or other professional advisor.

km Kidder
Mathews



PETER WINTERLING 916.730.7350 | peter.winterling@kidder.com | LIC N° 00992375

KIDDER.COM

This information supplied herein is from sources we deem reliable. It is provided without any representation, warranty, or guarantee, expressed or implied as to its accuracy. Prospective Buyer or Tenant should conduct an independent investigation and verification of all matters deemed to be material, including, but not limited to, statements of income and expenses. Consult your attorney, accountant, or other professional advisor.

