



PROPERTY HIGHLIGHTS

901 NORTHPOINT PARKWAY | WEST PALM BEACH | FL

Rare opportunity to lease professional office and small flex/warehouse spaces in West Palm Beach.

New ownership recently completed an extensive \pm \$1-million-dollar property improvement plan!

Flexible zoning allows for a broad spectrum of permitted uses!

Well located on the heavily travelled 45th Street corridor immediately west of the I-95 on and off ramps. **Some suites have I-95 signage visibility!**

Minutes away from the robust center of Downtown West Palm Beach, and a few miles from Palm Beach International Airport.

See next page for availability and pricing details!



AVAILABILITY AND PRICING

901 NORTHPOINT PARKWAY | WEST PALM BEACH | FL

- **Suite 104 • 1,730 Square Feet**
 - Built out as majority office space.
 - Reception area, 5 private offices, plus a conference room.
 - Two bathrooms.
 - ±196 sf warehouse in the back **with a garage door.**
 - **Ability to expand warehouse.**
- **Suite 118 • 1,912 Square Feet**
 - Currently majority wide-open space under drop ceiling.
 - Two bathrooms.
 - **Garage door is available on this space.**
- **Suite 301 • 1,838 Square Feet (spec suite)**
 - Contemplated build out to be half office and half warehouse with a garage door.
 - Build out slated for late Q2 2026.

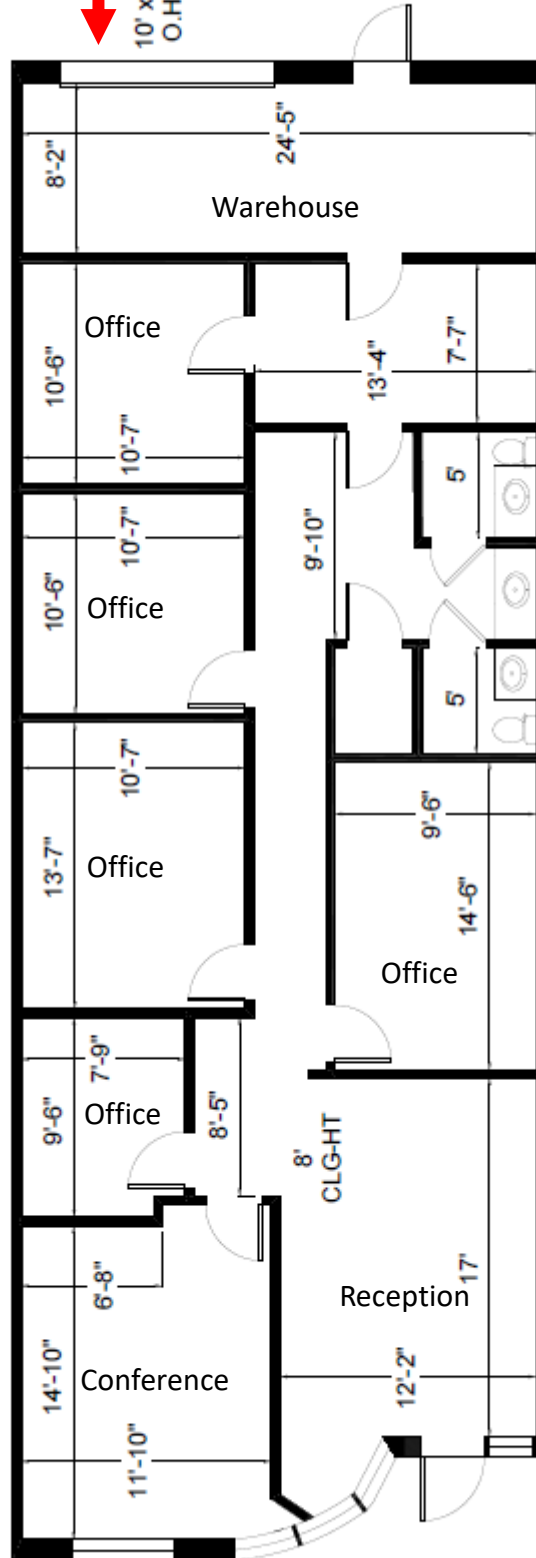
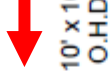
Rates starting from \$17.00 PSF NNN + \$8.80 PSF CAM



FLOOR PLAN

901 Northpoint Parkway, Suite 104 – 1,730 Square Feet

Garage Door
Location

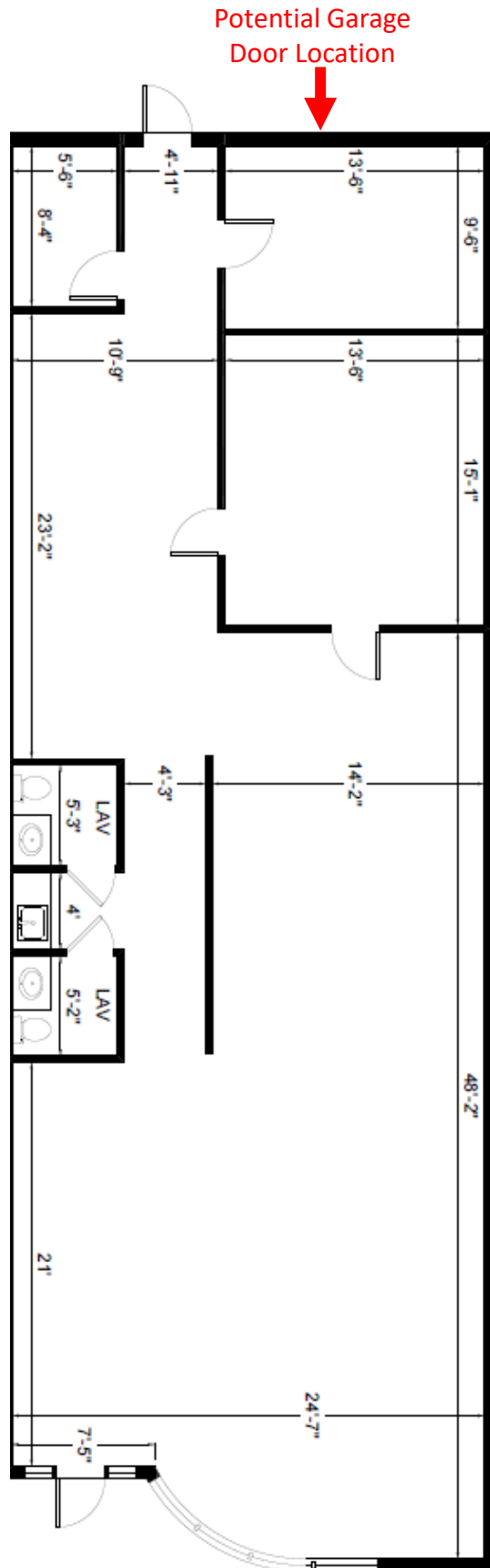


subject to errors, omissions, prior sale or lease, change in price and withdrawal



FLOOR PLAN

901 Northpoint Parkway, Suite 118 – 1,912 Square Feet

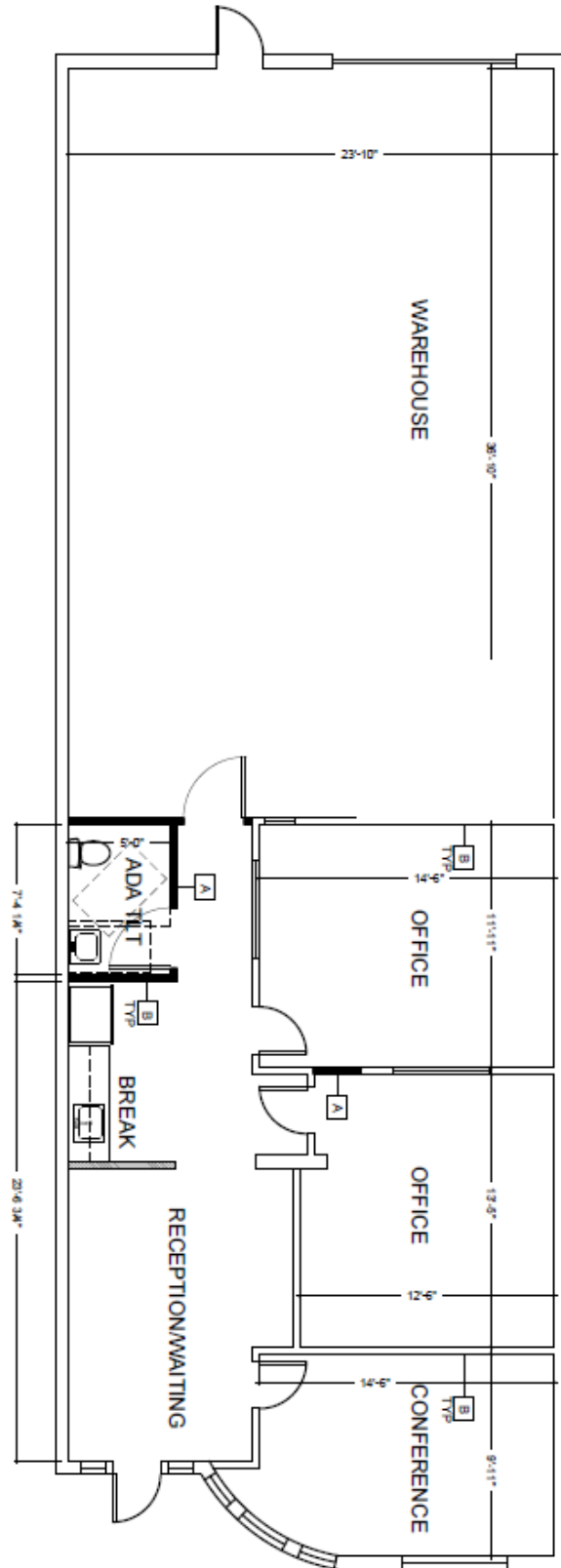


subject to errors, omissions, prior sale or lease, change in price and withdrawal



FLOOR PLAN

901 Northpoint Parkway, Suite 301 – 1,838 Square Feet



**This is a spec floor plan that is not yet built out. Build out slated for late Q2 2026. Revisions possible.*

subject to errors, omissions, prior sale or lease, change in price and withdrawal



LOCATION INFORMATION

Immediate Access to I-95 at 45th Street



Destinations	Distance (Miles)	Travel Time
Interstate 95	±0.70	2 mins
Florida's Turnpike Downtown	±5.0	12 mins
West Palm Beach	±6.0	10 mins
The Breakers Hotel (Palm Beach)	±6.9	20 mins
Palm Beach International Airport	±7.6	11 mins
Ft. Lauderdale International Airport	±53.2	58 mins

subject to errors, omissions, prior sale or lease, change in price and withdrawal



DUNN
COMMERCIAL

FOR MORE INFORMATION, CONTACT:

DARRYN DUNN, MANAGING PARTNER
(561) 319-9117
DARRYN@DUNNFL.COM