

FOR LEASE

±6,873 SF

2925

RICKER WAY

ANAHEIM | CALIFORNIA



FOR MORE INFORMATION PLEASE CONTACT

MICHAEL ZEHNER
SENIOR VICE PRESIDENT

714.935.2328
McZehner@voitco.com
Lic. #01917963

MITCH ZEHNER
EXECUTIVE VICE PRESIDENT

714.935.2307
MZehner@voitco.com
Lic. #00882464

Voit

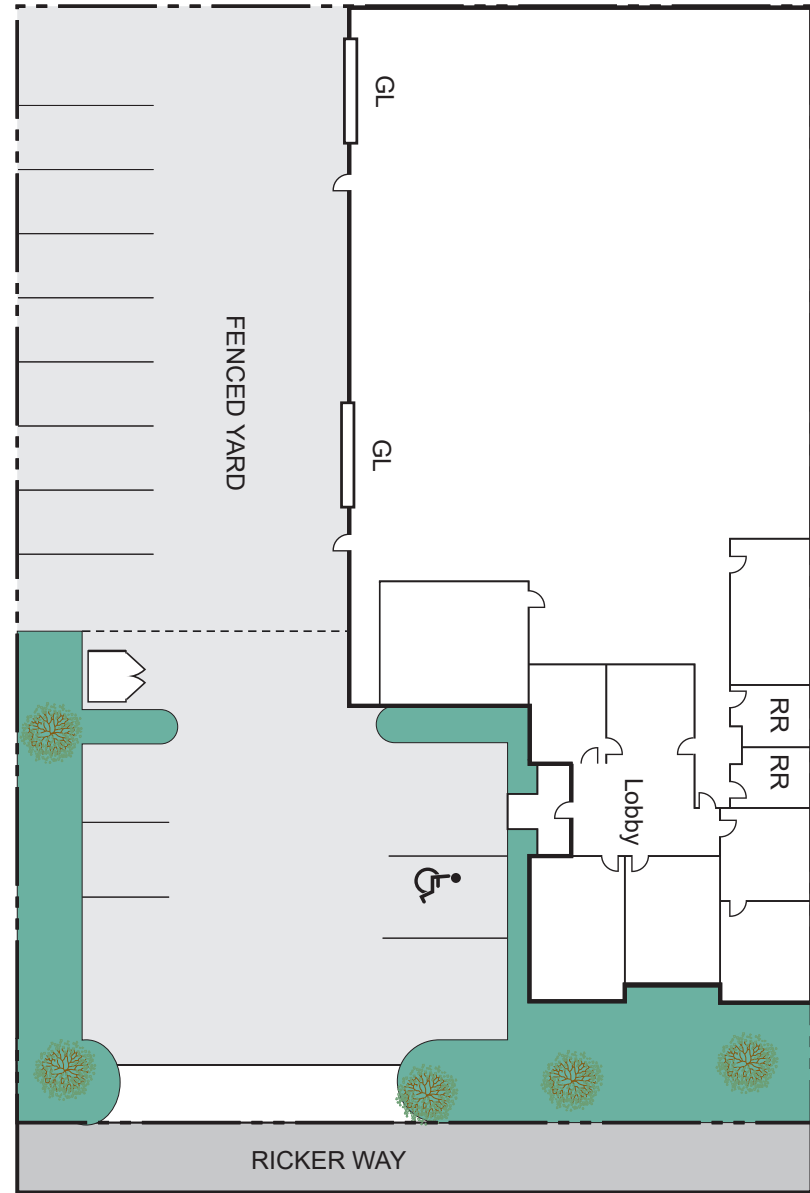
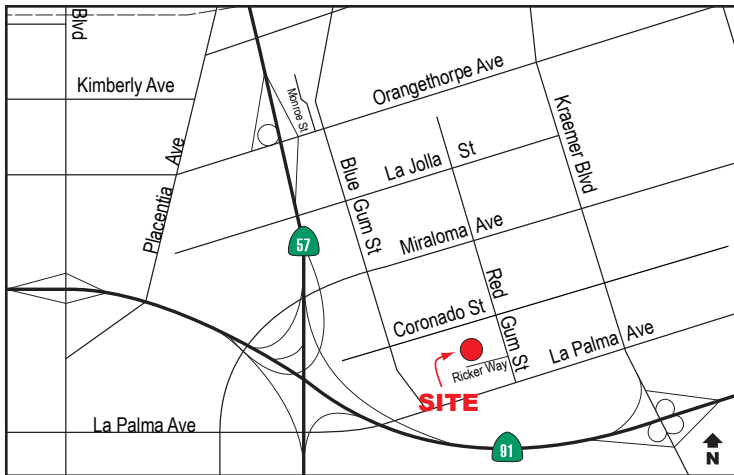
REAL ESTATE SERVICES

2020 Main Street | Suite 100 | Irvine, California 92614 | 949.851.5100 | 949.261.9092 Fax | www.VoitCo.com

LICENSED AS REAL ESTATE SALESPERSONS BY THE DRE. ©2024 VOIT REAL ESTATE SERVICES, INC. ALL RIGHTS RESERVED. LIC. #01991785

PROPERTY FEATURES

- ±6,873 SF FREESTANDING INDUSTRIAL BUILDING
- ± 1,500 SF OF OFFICE AREA
- ± 5,373 SF OF WAREHOUSE AREA
- 16' WAREHOUSE CLEARANCE
- 2 GROUND LEVEL LOADING DOORS
- 400 AMP 120/208 VOLT (VERIFY)
- 14 PARKING STALLS
- FENCED YARD
- FIRE SPRINKLERED
- IMMEDIATE ACCESS TO 57, & 91 FREEWAYS



FOR MORE INFORMATION PLEASE CONTACT

MICHAEL ZEHNER
SENIOR VICE PRESIDENT

714.935.2328
McZehner@voitco.com
Lic. #01917963

MITCH ZEHNER
EXECUTIVE VICE PRESIDENT

714.935.2307
MZehner@voitco.com
Lic. #00882464

Voit
REAL ESTATE SERVICES

2020 Main Street | Suite 100 | Irvine, California 92614 | 949.851.5100 | 949.261.9092 Fax | www.VoitCo.com

The information contained herein has been obtained from sources we deem reliable. While we have no reason to doubt its accuracy, we do not guarantee it. Licensed as Real Estate Salespersons by the DRE. ©2024 Voit Real Estate Services, Inc. All Rights Reserved. License #01991785.