



# For Sublease

**Abele Business Park**  
100 Emerson Lane  
Bridgeville, PA 15017

## Sublease details

- Floor 1 - 12,124 SF
- Term through June 2029
- Collaborative workstation area
- Private offices
- Conference room
- Kitchen & breakroom
- Furniture available
- Free parking
- Outdoor exercise stations
- Easy access to I-79
- Aggressive sublease economics
- Direct term available after sublease term

**Remy Notkin**

Associate

[remy.notkin@jll.com](mailto:remy.notkin@jll.com)

+1 412 208 1400 (O)

+1 412 979 2226 (M)

[jll.com](http://jll.com)

Jones Lang LaSalle Brokerage, Inc.



Workstations

Private offices

Conference room



**Remy Notkin**

Associate

[remy.notkin@jll.com](mailto:remy.notkin@jll.com)

+1 412 208 1400 (O)

+1 412 979 2226 (M)

[jll.com](http://jll.com)

Jones Lang LaSalle Brokerage, Inc.

## Kitchen & Breakroom



**Remy Notkin**

Associate

[remy.notkin@jll.com](mailto:remy.notkin@jll.com)

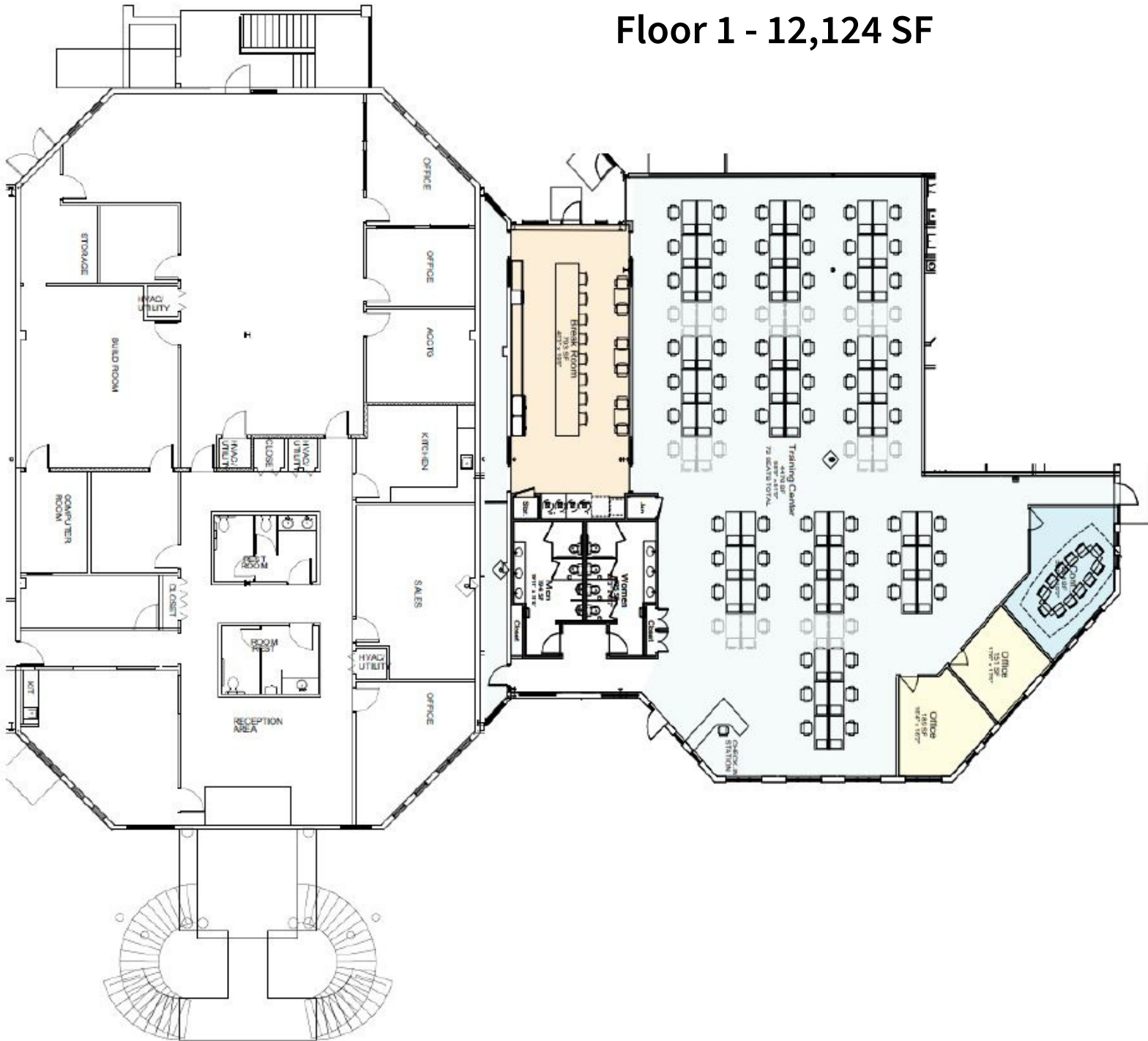
+1 412 208 1400 (O)

+1 412 979 2226 (M)

[jll.com](http://jll.com)

Jones Lang LaSalle Brokerage, Inc.

# Floor 1 - 12,124 SF



**Remy Notkin**

Associate

[remy.notkin@jll.com](mailto:remy.notkin@jll.com)

+1 412 208 1400 (O) +1 412 979 2226 (M)