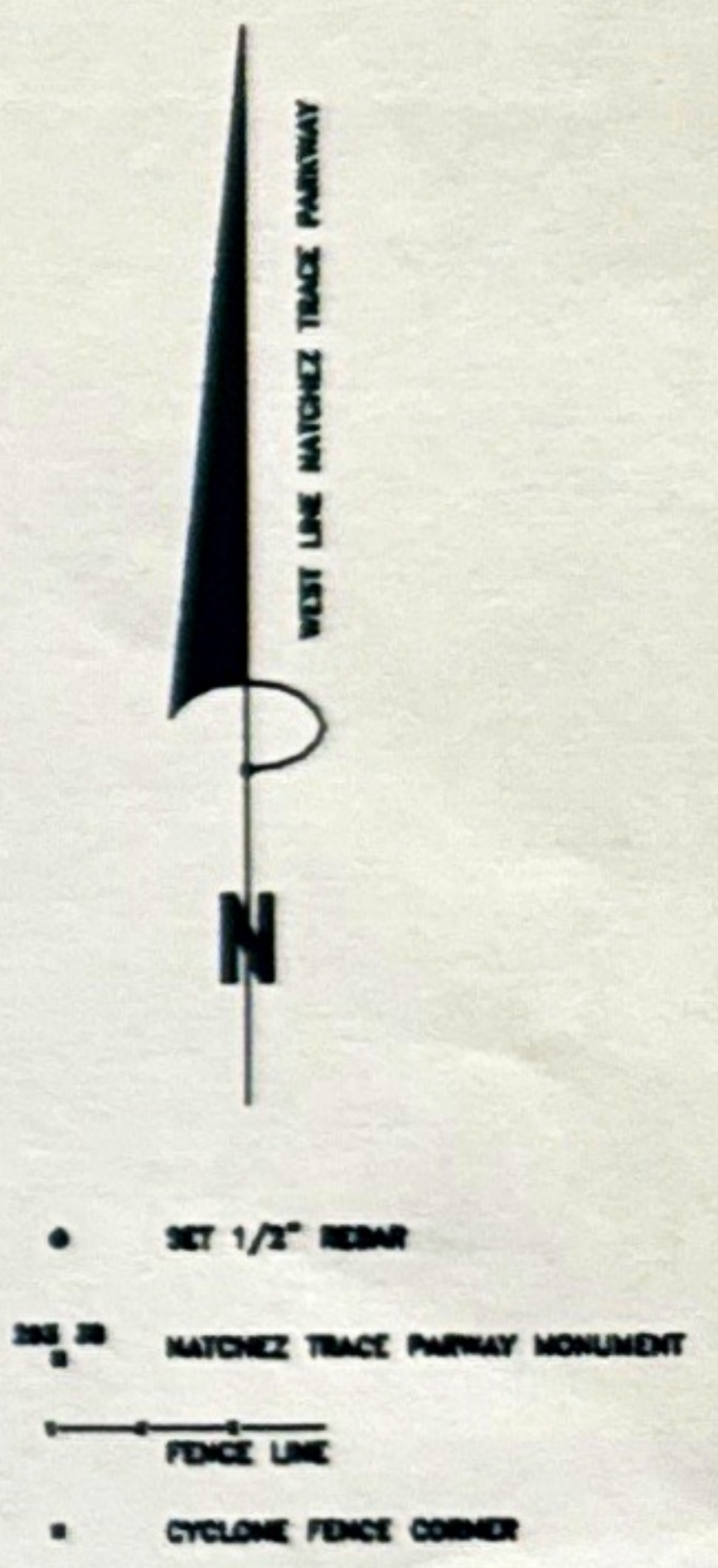
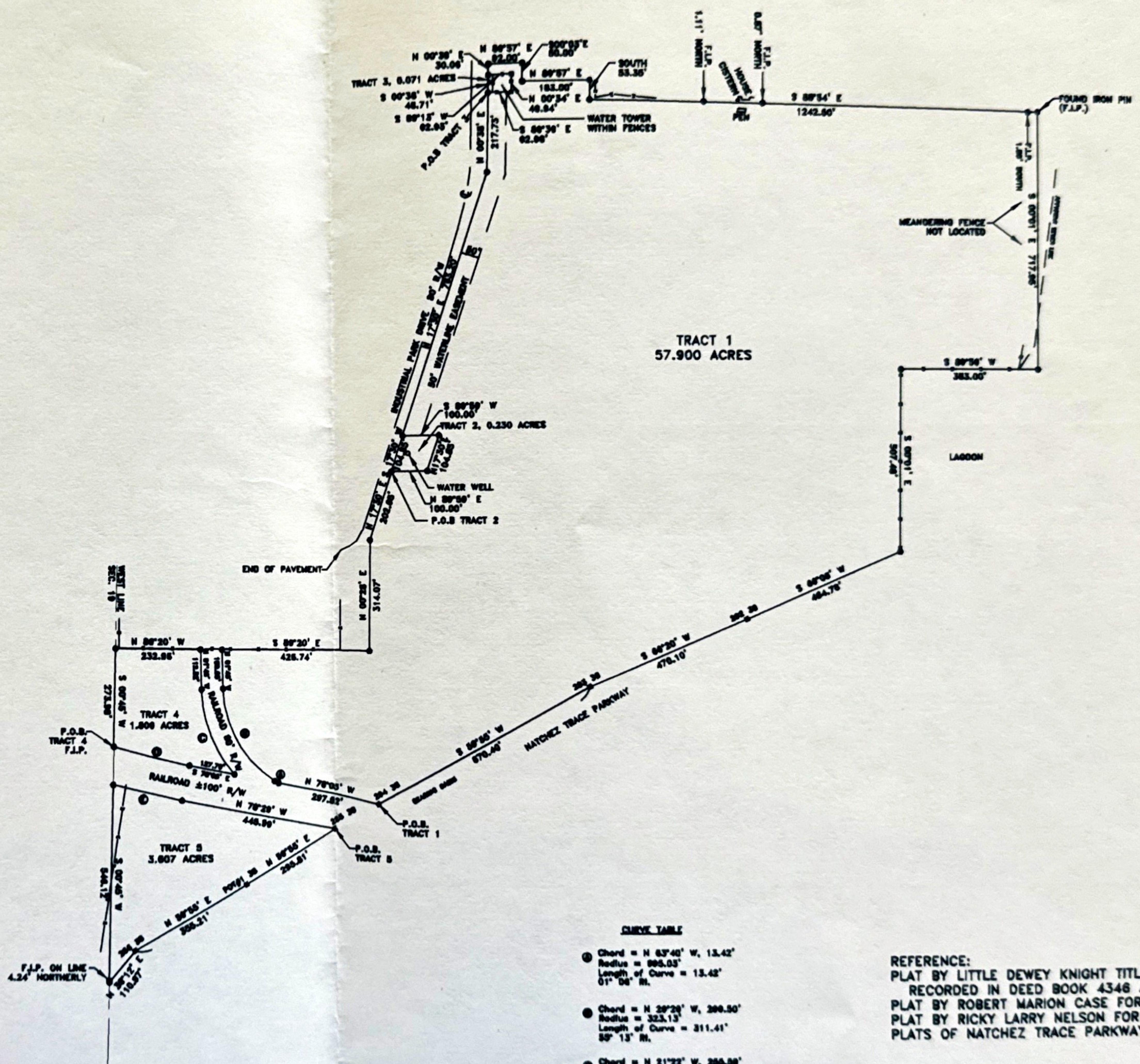


DRAKE, DAVIS & RANKIN ENGINEERING
 Consulting Engineers - Land Surveyors
 Ph 601-857-4361 P.O. Box 32 Raymond, MS 39154 Fax 601-857-3136

CLINTON INDUSTRIAL PARK
 5 PARCELS SITUATED IN THE NW 1/4 OF SEC. 19
 AND IN THE SW 1/4 OF THE SW 1/4 OF SEC 18
 ALL IN T6N, R1W, HINDS COUNTY, MISSISSIPPI



CURVE TABLE

①	Chord = N 83°40' W, 13.42'
	Radius = 895.03'
	Length of Curve = 13.42'
	01° 04' R.
②	Chord = N 29°26' W, 200.50'
	Radius = 323.13'
	Length of Curve = 311.41'
	50° 13' R.
③	Chord = N 21°25' W, 256.50'
	Radius = 393.13'
	Length of Curve = 290.50'
	34° 56' R.
④	Chord = S 70°44' E, 214.86'
	Radius = 3435.18'
	Length = 214.82'
	00° 04' L.
⑤	Chord = N 70°34' W, 104.90'
	Radius = 4430.51'
	Length = 104.50'
	02° 31' R.

REFERENCE:
 PLAT BY LITTLE DEWEY KNIGHT TITLED ALFORD ALEXANDER,
 RECORDED IN DEED BOOK 4346 AT PAGE 454
 PLAT BY ROBERT MARION CASE FOR ABC WOOD PRODUCTS
 PLAT BY RICKY LARRY NELSON FOR TODD FAMILY
 PLATS OF NATCHEZ TRACE PARKWAY

* THIS PLAT CERTIFIES TO APPARENT EASEMENTS ONLY

JAMES M. RANKIN
 REGISTERED PROFESSIONAL LAND SURVEYOR
 STATE OF MISSISSIPPI
 PLS-02641

SCALE: 1" = 200'
 DATE: AUGUST 25, 1998
 JOB: 98273 /CIP
 CLASS: 'B'