

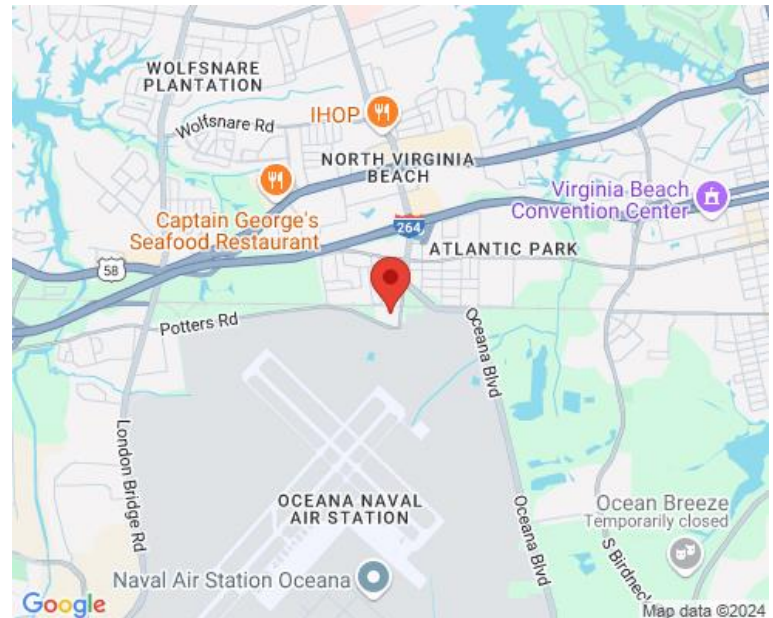


PROPERTY OVERVIEW

AREA MAP

3,000 SF OFFICE FLEX END UNIT CONDO FOR LEASE OR SALE

- Two-story office condo, conveniently located in Hilltop area of Virginia Beach; easy access to I-264
- Built in 1984; zoned light industrial (I-1); APZ1
- Two restrooms; one is handicap accessible
- Perfect for karate studio, dance/fitness studio or other indoor recreational use
- Great for auto parts store, wholesale trade, warehousing, storage and/or distribution use
- Amenable to printing/publishing or manufacturing of food & kindred products, clothes, wood, metal, paper and allied products and miscellaneous manufacturing
- **RENT:** \$2,600/month (includes water and trash)
- **SALE PRICE:** \$325,000



FOR MORE INFORMATION, PLEASE CONTACT:

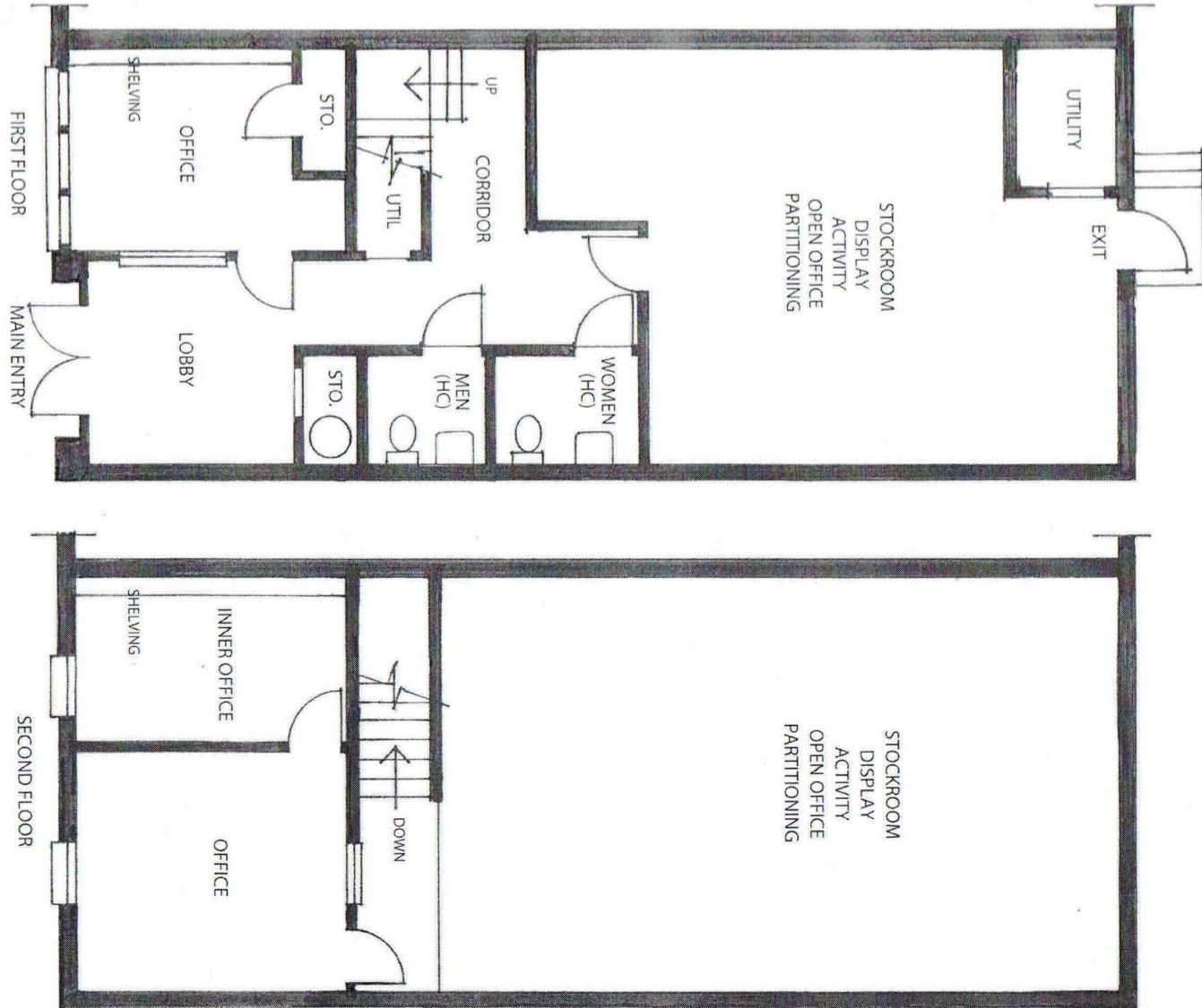
LENNY BURNS
(757) 490-3141

lburns@pembrokerealty.com

COLE WERKHEISER
(757) 490-3141

cwerkheiser@pembrokerealty.com

Pembroke Realty Group
4433 Corporation Lane, Suite 250
Virginia Beach, VA 23462
www.pembrokerealty.com



TRADE CENTER SUITE 116
105 SOUTH FIRST COLONIAL ROAD
VIRGINIA BEACH, VIRGINIA 23454
(CORNER OF SOUTH FIRST COLONIAL ROAD AND POTTERS ROAD)

FOR MORE INFORMATION, PLEASE CONTACT:

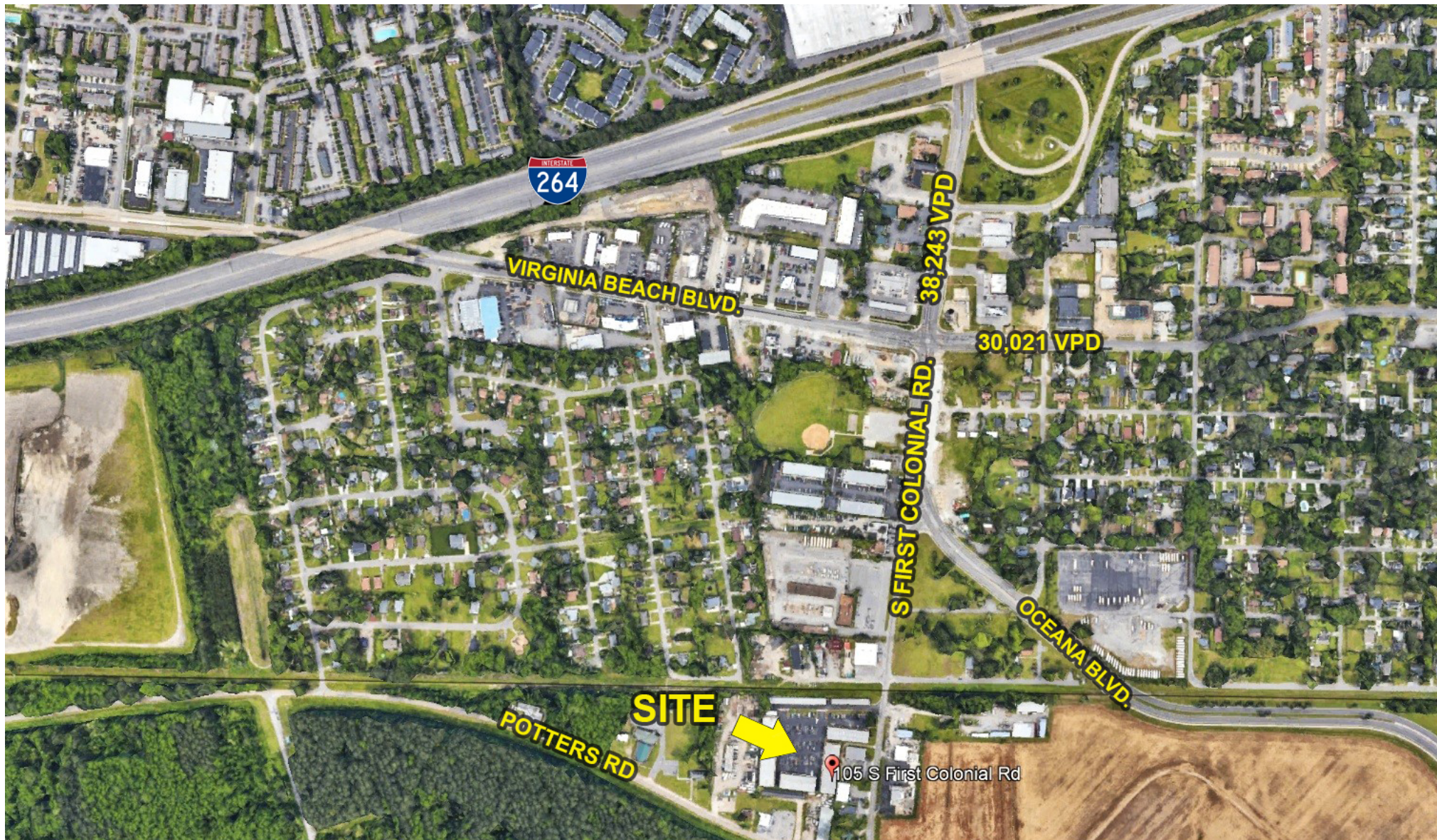
LENNY BURNS
(757) 490-3141
lburns@pembrokerealty.com

COLE WERKHEISER
(757) 490-3141
cwerkheiser@pembrokerealty.com

Pembroke Realty Group
4433 Corporation Lane, Suite 250
Virginia Beach, VA 23462
www.pembrokerealty.com

Trade Center

± 3,000 SF AVAILABLE



FOR MORE INFORMATION, PLEASE CONTACT:

LENNY BURNS
(757) 490-3141
lburns@pembrokerealty.com

COLE WERKHEISER
(757) 490-3141
cwerkheiser@pembrokerealty.com

Pembroke Realty Group
4433 Corporation Lane, Suite 250
Virginia Beach, VA 23462
www.pembrokerealty.com