

STREET FRONT RETAIL WITH LARGE PATIO - FOR LEASE



2244

**LOGAN
AVENUE**
SAN DIEGO, CA 92113

KRIS BOEHMER

Senior Advisor
Investment Sales & Leasing
(858) 243-7757
Kris@PacificCoastCommercial.com
Lic. 01890240

PACIFIC COAST COMMERCIAL

10721 Treena Street, Suite 200
San Diego, CA 92131
(619) 469-3600
www.PacificCoastCommercial.com
Lic. 01209930

The information contained herein has been given to us by the owner of the property or other sources we deem reliable, we have no reason to doubt its accuracy, but we do not guarantee it. All information should be verified prior to transaction.



PROPERTY DESCRIPTION



PROPERTY

2244 Logan Avenue, San Diego, CA 92113



SIZE

- ± 650 Square Foot Retail Storefront
- ± 300 Square Foot Attached Storage Structure (Optional)
- ± 1,100 Square Foot Outdoor Patio/Yard



POTENTIAL USES

- Retail Store
- General Office
- Home & Garden
- Art Studio / Gallery
- Bicycle Shop / Repair
- Appliance Repair Shop



LOCATION

- Centrally Located in Logan Heights Neighborhood
- Abundant New Businesses Moving into the Area
- Nearby Petco Park
- Two Blocks from Chicano Park
- Cultural Area Rich in Character
- Excellent Transit & Walking Score
- 1/2 Mile to Trolley Station



ACCESSIBILITY

Easy Freeway Access to I-5, SR-75 & U.S. Navy Shipyard



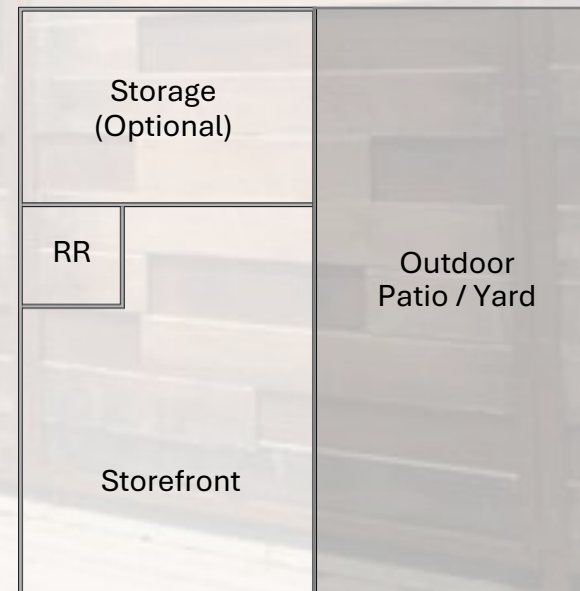
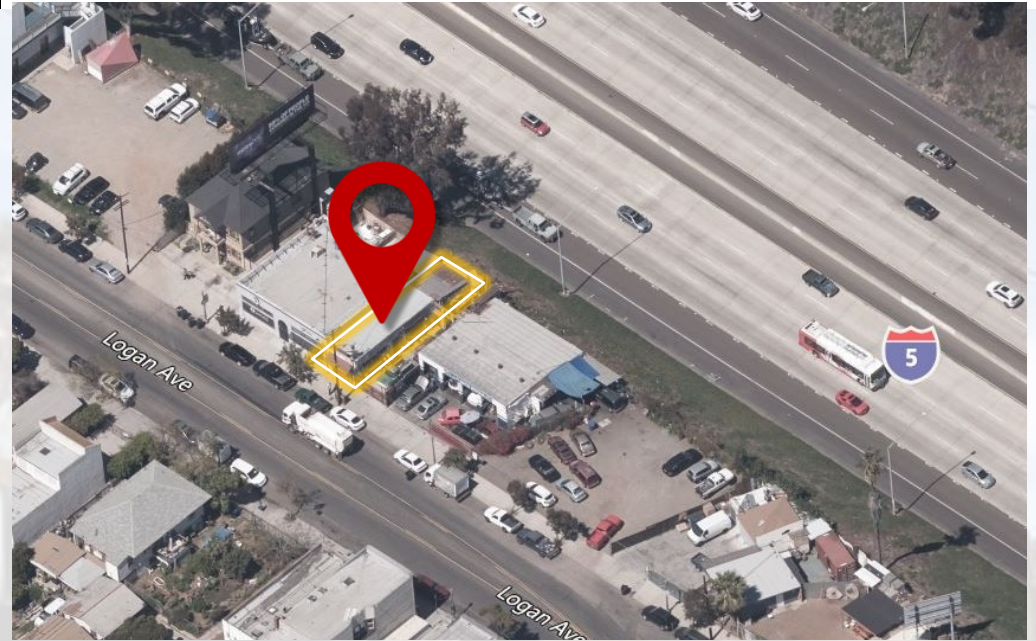
LEASE RATE

\$2,700 Per Month + Utilities

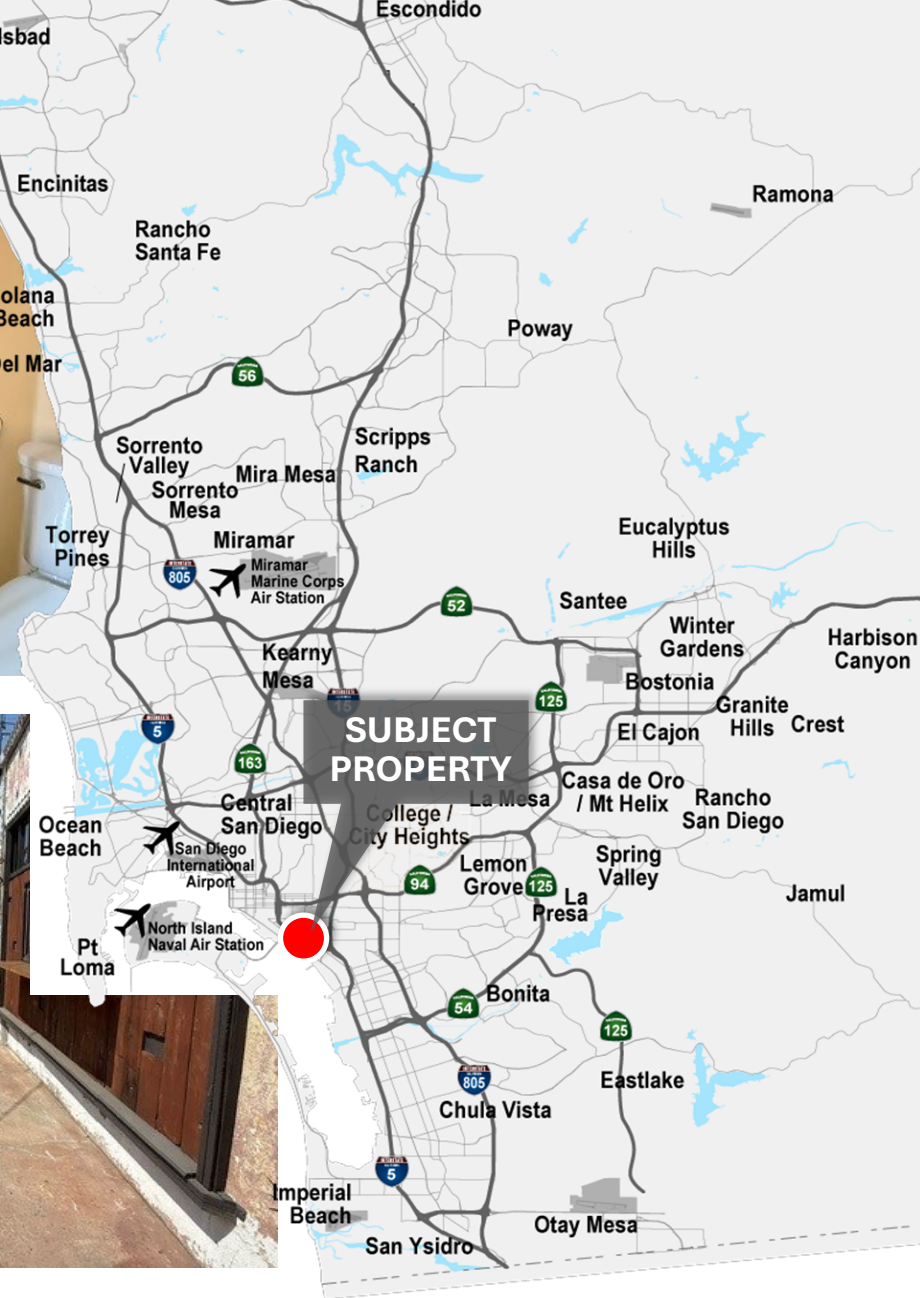


AVAILABLE NOW

Call Agent to Schedule a Showing.



CONTACT INFORMATION



KRIS BOEHMER
Senior Advisor
Investment Sales & Leasing
(858) 243-7757
Kris@PacificCoastCommercial.com
Lic. 01890240

2244 LOGAN AVENUE
SAN DIEGO, CA 92113