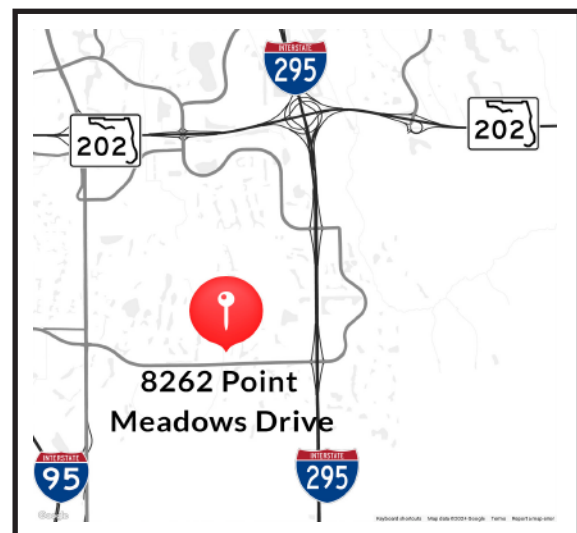




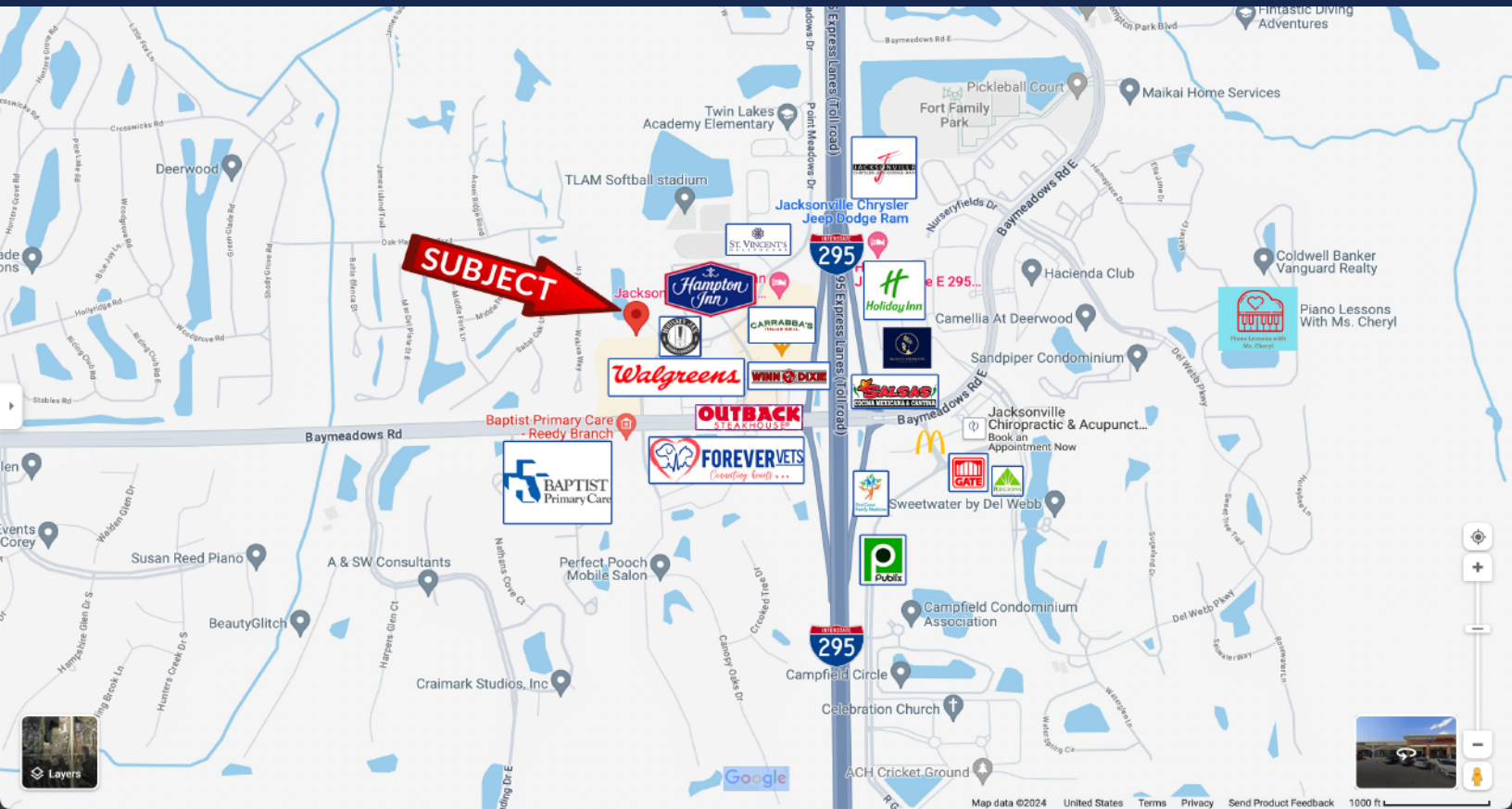
8262 Point Meadows Drive | Jacksonville, FL 32256

Medical/Professional Office Space

- Prime professional/medical office space for lease
- Located in busy corridor of Baymeadows and Gate Pkwy
- Available 15,300± sqft
- Traffic count: 81,500 ± AADT Baymeadows Rd. & I -295
- Surrounding retailers include: IKEA, Publix, Outback & Winn-Dixie



Location Map



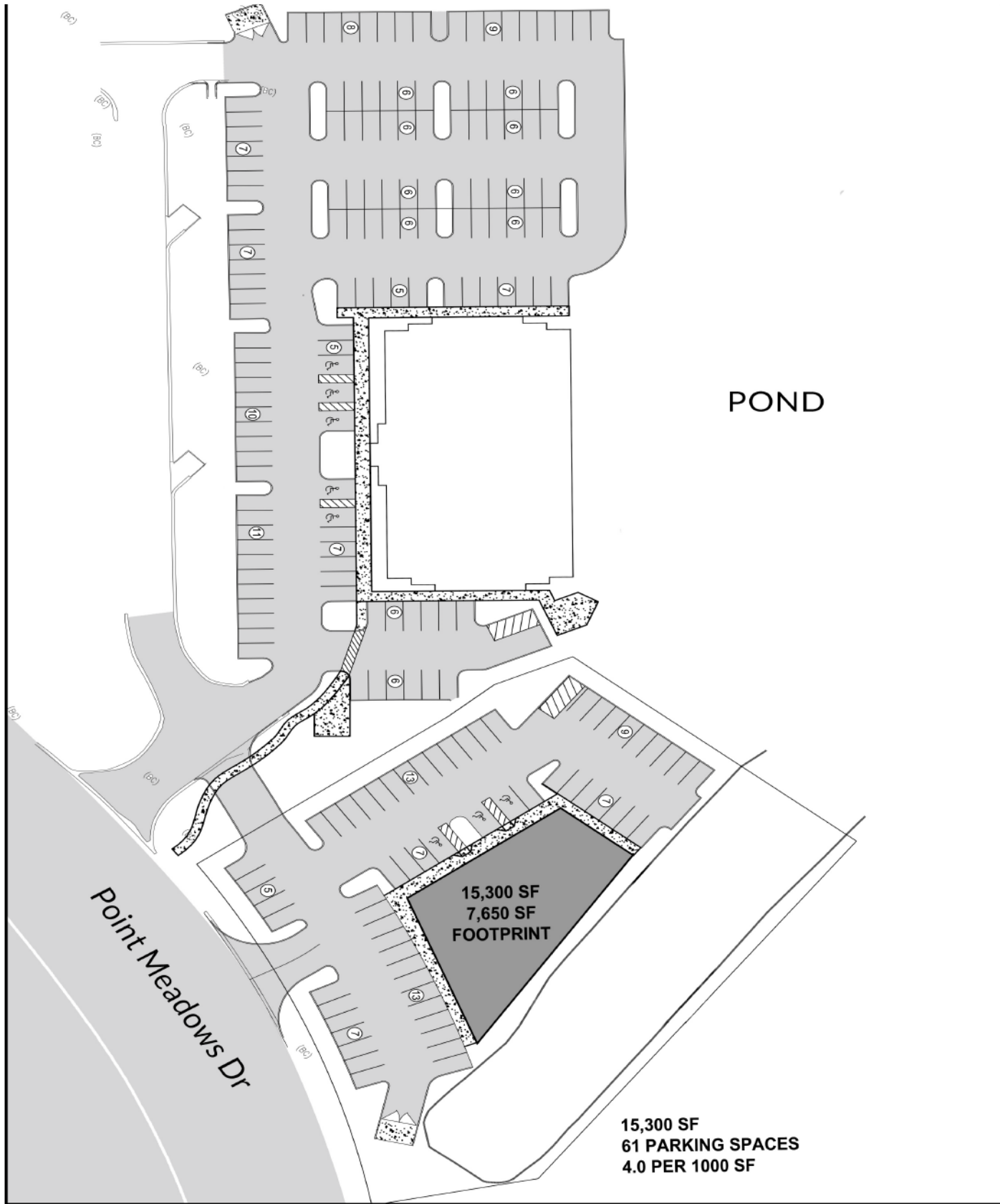
Demographic Information

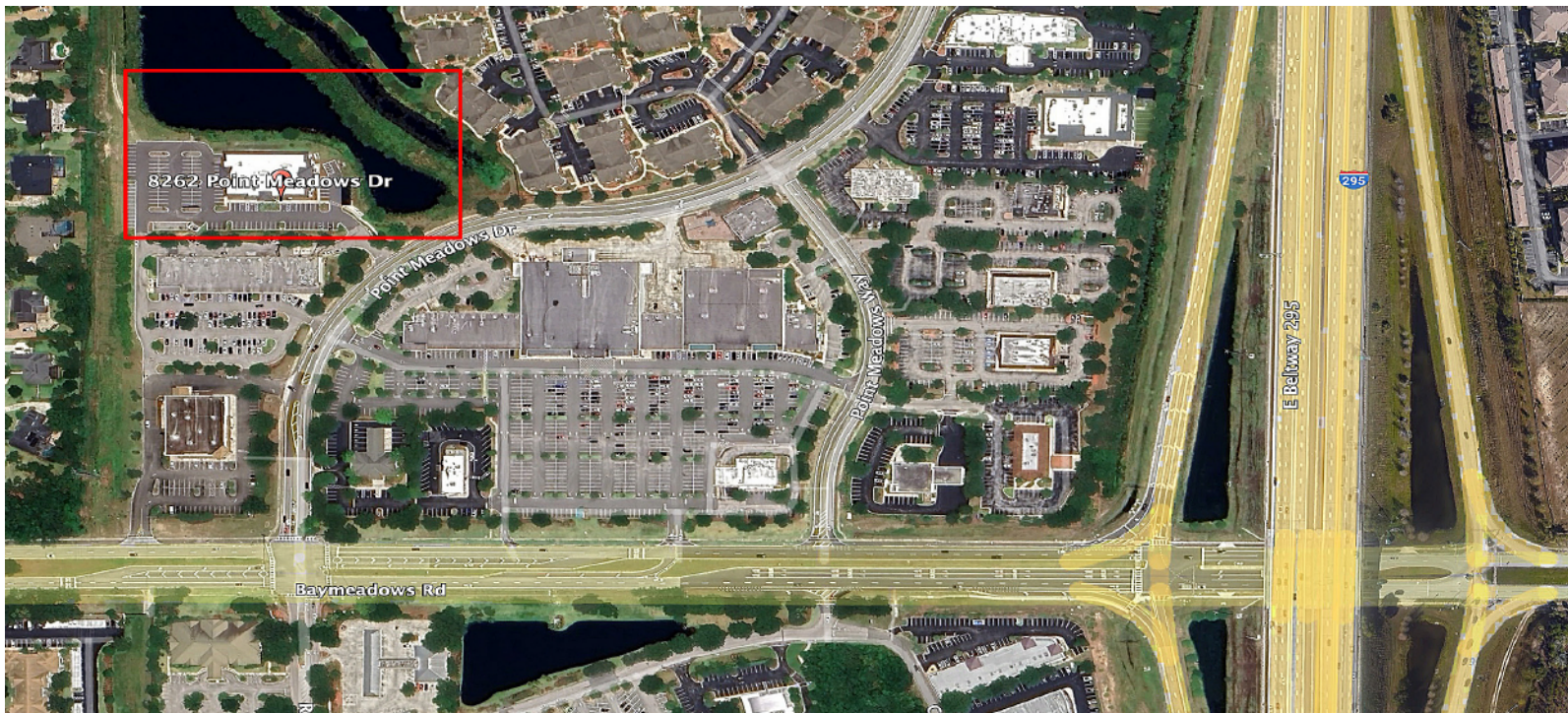
HOUSEHOLDS

	1 Mile	3 Mile	5 Mile
2010 Census	5,764	41,194	95,647
2023 Estimate	10,667	57,641	124,160
2028 Projection	11,718	61,640	131,619

INCOME

	1 Mile	3 Mile	5 Mile
Average Household Income	\$118,337	\$93,254	\$93,595
Median Household Income	\$89,436	\$67,867	\$71,214





Listing Agents



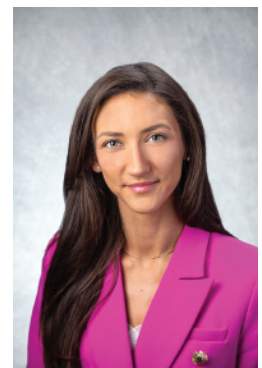
Mert Kerimoglu

Senior Advisor
Healthcare Brokerage – Development
Mobile: (617) 899-3046
Mert.Kerimoglu@crossregions.com



Turul Sengul

Senior Advisor
Mobile: (954) 980-5988
TS@crossregions.com



Taylor Rice

Sales Associate
Mobile: (516) 816-9745
Taylor.Rice@crossregions.com