

OFFICE SPACE FOR LEASE

9828 E Burnside

PORTLAND, OR 97216



High-visibility office space in Portland's East Burnside Corridor

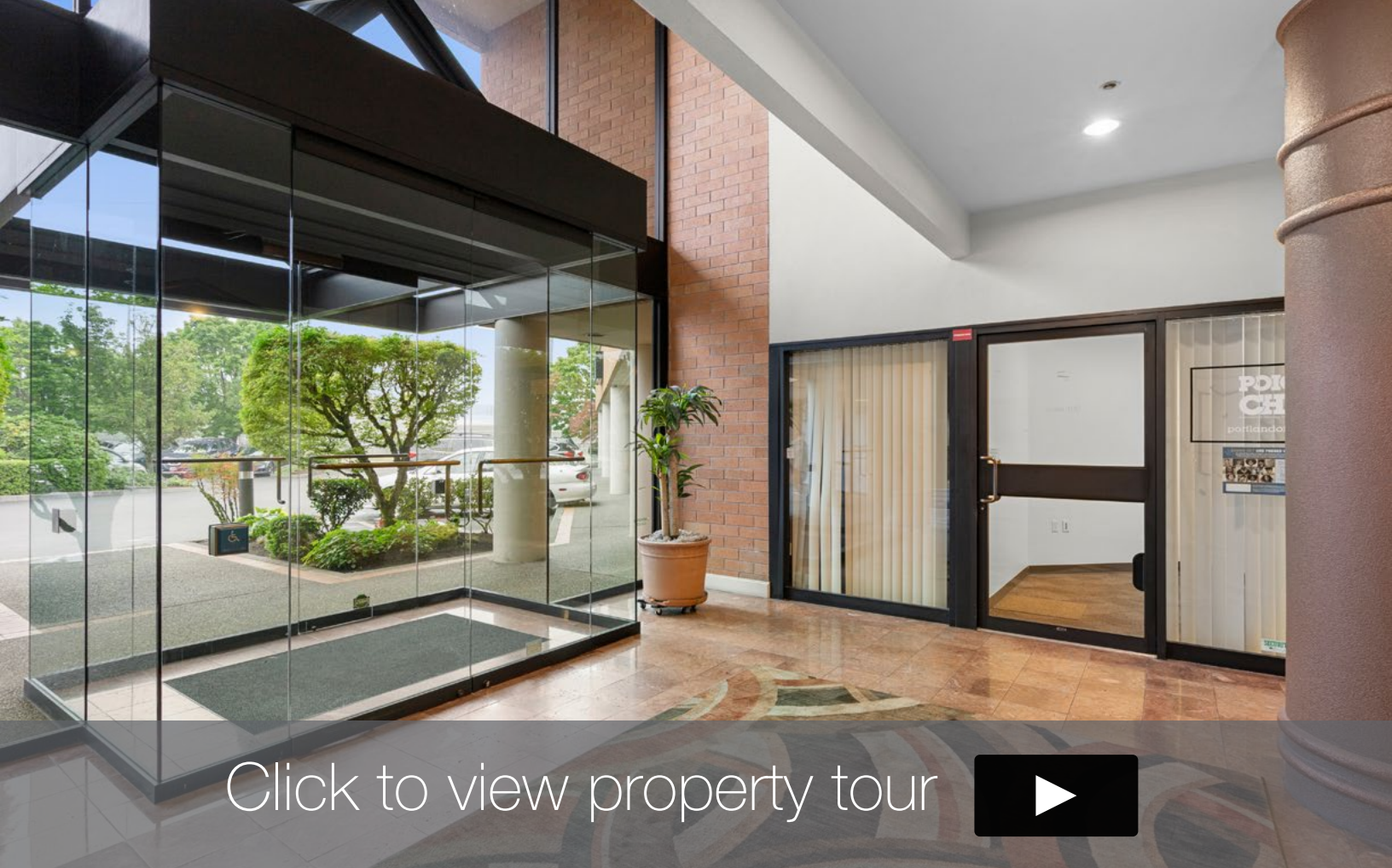
CONTACT

Sara Daley
Justin Darling

503 568 5908 / 503 224 6791 / sdaley@naielliott.com
503 457 2990 / 503 224 6791 / jdarling@naielliott.com

NAI Elliott

The information herein has been obtained from sources we deem reliable. We do not, however, guarantee its accuracy. All information should be verified prior to purchase/leasing. View the Real Estate Agency Pamphlet by visiting our website, www.naielliott.com/agencydisclosures



AVAILABLE SPACE

- 1,850 SF

LEASE RATE

- Call for details

PROPERTY HIGHLIGHTS

Located on bustling East Burnside, this property offers excellent visibility and convenient access in a high-traffic corridor. Just steps from the MAX Blue Line and major bus routes, the site is easy to reach for both customers and employees. Surrounded by a mix of retail, dining, and community services, it's an ideal location for tenants seeking strong neighborhood demographics and consistent foot traffic.

- Prime East Burnside address
- Mixed-use & vibrant neighborhood character
- Existing tenant & foot traffic anchor
- High transit accessibility



This stretch of Lower East Burnside is known for its convergence of old and new Portland culture.

IT FEATURES A BLEND OF NEW DEVELOPMENTS, VINTAGE BUILDINGS, AND AN EVOLVING MIX OF RESTAURANTS, BARS, AND NIGHTLIFE.



NEARBY BUSINESSES

- Winco
- Ross
- Target
- Home Depot
- Red Robin
- Office Depot
- McMenamins Mall 205

CONVENIENT MULTI-MODAL ACCESS

- Steps from MAX Blue Line: Easy access to light rail for employees and customers.
- Multiple TriMet bus routes: Convenient connections throughout Portland.
- High-traffic corridor: Excellent visibility for passing vehicles and pedestrians.
- Accessible by car: Direct access to major east-west arterial, simplifying commutes.



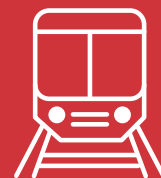
95

BIKE SCORE



84

WALK SCORE



66

TRANSIT SCORE

CONTACT

Sara Daley
Justin Darling

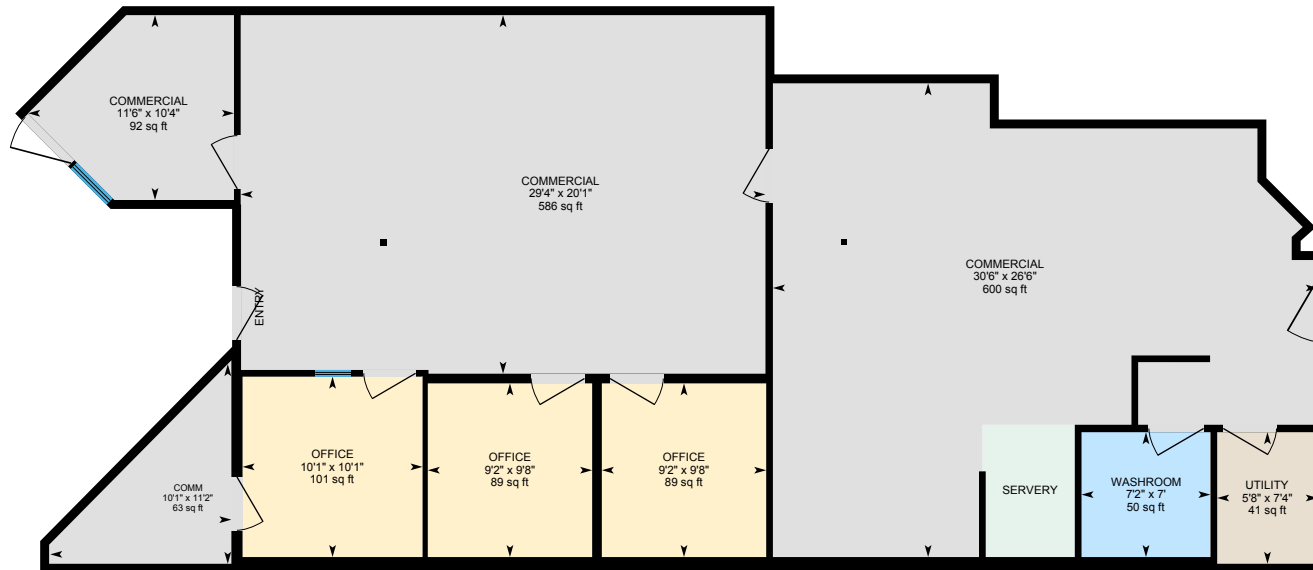
503 568 5908 / 503 224 6791 / sdaley@naielliott.com
503 457 2990 / 503 224 6791 / jdarling@naielliott.com

NAI Elliott

Space plan

9828 E Burnside St Portland, OR

Main Floor Exterior Area 1916.83 sq ft
Interior Area 1809.52 sq ft



0 6 12
ft

PREPARED: 2025/10/03



White regions are excluded from total floor area in iGUIDE floor plans. All room dimensions and floor areas must be considered approximate and are subject to independent verification.

iGUIDE

CONTACT

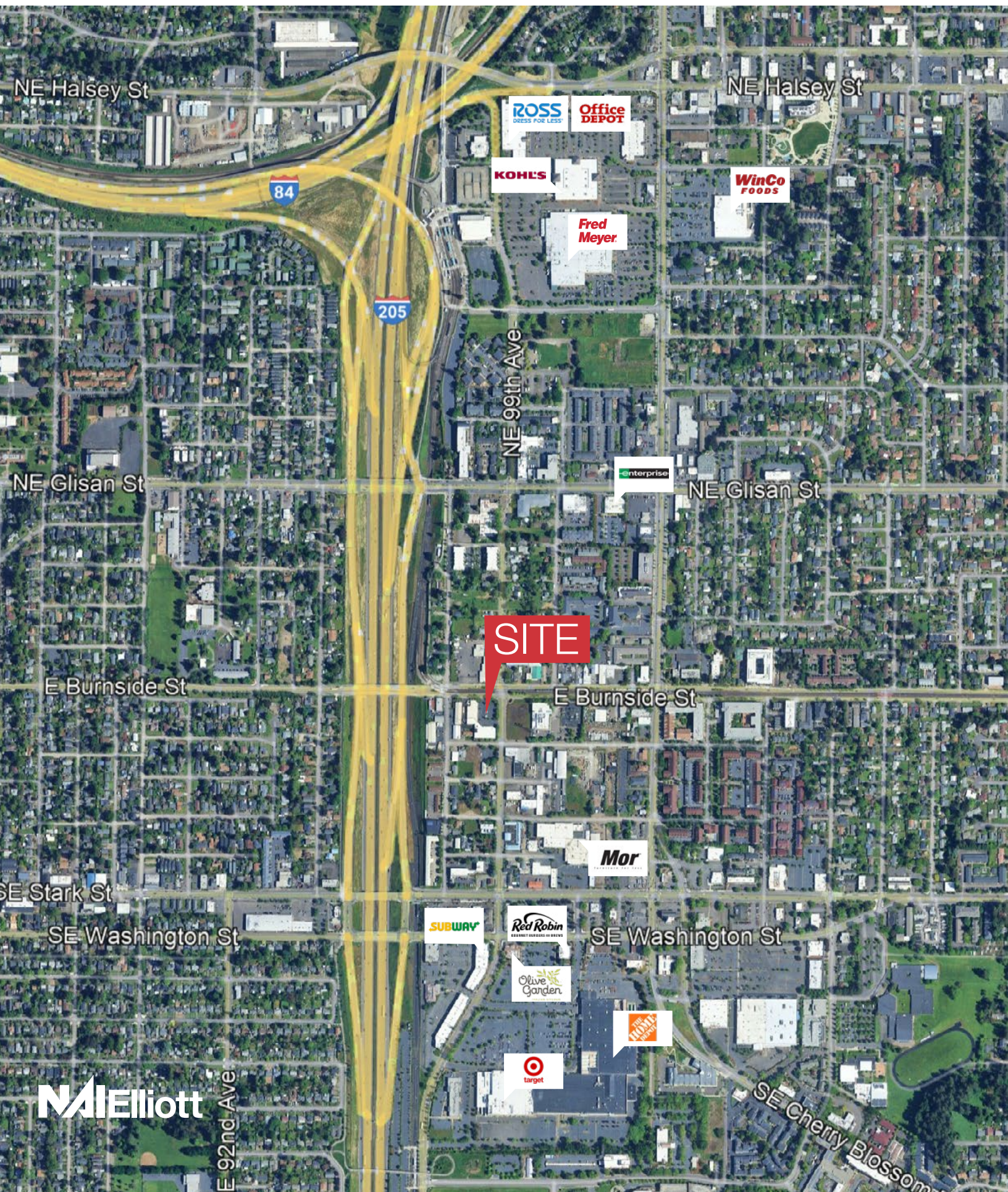
Sara Daley
Justin Darling

503 568 5908 / 503 224 6791 / sdaley@naielliott.com
503 457 2990 / 503 224 6791 / jdarling@naielliott.com

NAI Elliott

The information herein has been obtained from sources we deem reliable. We do not, however, guarantee its accuracy. All information should be verified prior to purchase/leasing. View the Real Estate Agency Pamphlet by visiting our website, www.naielliott.com/agencydisclosures

Trade Area



Photos



CONTACT

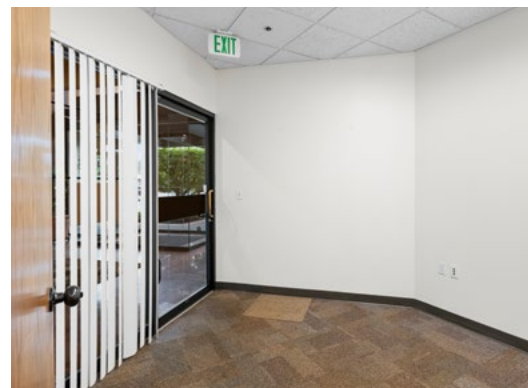
Sara Daley
Justin Darling

503 568 5908 / 503 224 6791 / sdaley@naielliott.com
503 457 2990 / 503 224 6791 / jdarling@naielliott.com

NAI Elliott

The information herein has been obtained from sources we deem reliable. We do not, however, guarantee its accuracy. All information should be verified prior to purchase/leasing. View the Real Estate Agency Pamphlet by visiting our website, www.naielliott.com/agencydisclosures

Photos



CONTACT

Sara Daley
Justin Darling

503 568 5908 / 503 224 6791 / sdaley@naielliott.com
503 457 2990 / 503 224 6791 / jdarling@naielliott.com

NAI Elliott

The information herein has been obtained from sources we deem reliable. We do not, however, guarantee its accuracy. All information should be verified prior to purchase/leasing. View the Real Estate Agency Pamphlet by visiting our website, www.naielliott.com/agencydisclosures