

**2010 & 2020**  
**WELLNESS WAY**  
LAS VEGAS, NV 89106

**GOLDRING**  
MEDICAL PLAZA  
**FOR LEASE**

SUITES RANGING FROM  
**1,328 - 10,130 SF**



**HEALTHCARE**

**JAMIE KRAHNE**  
SENIOR VICE PRESIDENT  
702.216.2363 **CELL**  
jamiiek@dcghealthcare.com  
B.143850/PM.164496

**MIKE TYMCZYN**  
VICE PRESIDENT  
702.216.2371 **DIRECT**  
mtymczyn@dcghealthcare.com  
S.177844

## PROPERTY HIGHLIGHTS

- Generous tenant improvement allowances
- Utilities, janitorial and minor repairs included in base rate
- Reserved, covered physician parking included at no additional charge
- Located on the Valley Hospital campus, centrally located in the Las Vegas Medical District with easy freeway and Strip access.
- Current specialties include: **Internal Medicine - Primary Care - Surgery - Neurology - Ophthalmology - Urology**



**GOLDRING MEDICAL PLAZA**

**VALLEY HOSPITAL  
MEDICAL CENTER**



**UNLV SCHOOL OF  
MEDICINE**

**UNIVERSITY  
MEDICAL CENTER**

**SHADOW LANE  
MEDICAL PLAZA**



## Your Golden Opportunity in Central Las Vegas

Leasing a medical office at Goldring Medical Plaza means being a part of the Las Vegas Medical District (LVMD).

The LVMD is one of the most important economic development projects in Southern Nevada, enhancing and expanding access to quality medical care advancing a higher quality of life. The LVMD is a collaborative effort between the City of Las Vegas and its downtown medical community.

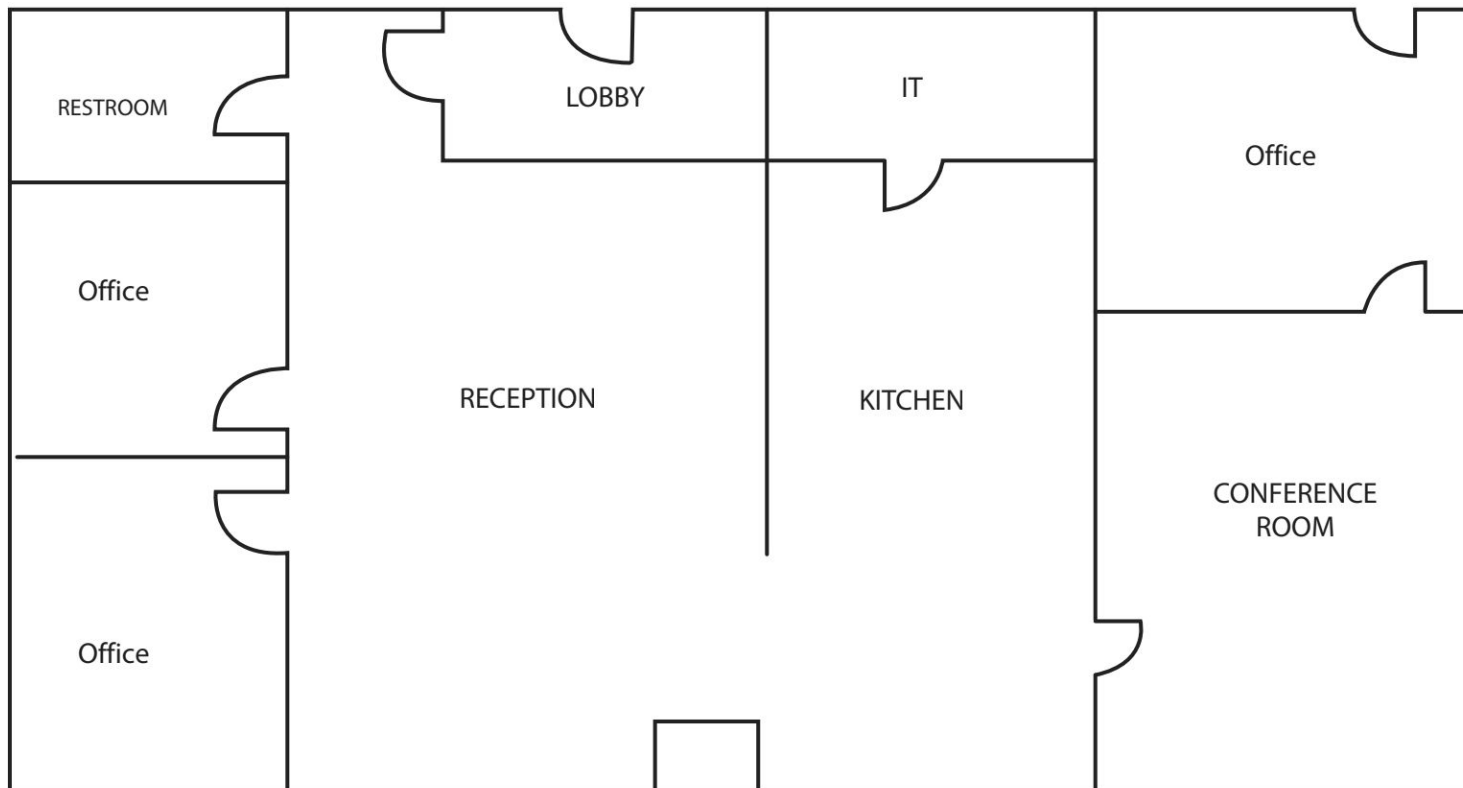
Goldring Medical Plaza, indicated on the map below, offers your patients easy access from anywhere in the Las Vegas Valley and provides you, the tenant, with an affordable option to contribute to Las Vegas' medical future.

**SECOND FLOOR**

**AVAILABLE SUITES**

**SUITE 201**

**1,363 SF**



## HOSPITAL SERVICES



### Behavioral Health

#### Cardiovascular

- Chest Pain Center
- Angioplasty
- Cardiac catheterization
- Pacemaker/defibrillator implants
- Bi-ventricular implants
- Peripheral vascular interventions
- Cardiovascular surgery
- Intravascular Ultrasound

#### Diabetes Treatment Center

- Inpatient care

#### Dialysis

- Inpatient care

#### Emergency Services

- Urgent and emergency care 24/7
- Advanced primary stroke center

#### Endoscopic Procedures

#### Laboratory Services

#### Oncology

- Adult inpatient care
- Oncology Surgery

#### Orthopedics

#### Radiology

- Angiography
- CT scan
- MRI
- Nuclear Medicine
- X-ray

#### Rehabilitation

- Inpatient Physical Therapy
- Speech Therapy
- Occupational Therapy
- Short-term inpatient rehabilitation unit

#### Respiratory Services

#### Surgery

- Inpatient
- Outpatient
- Robotic

#### Wound Care

- Inpatient care
- Outpatient care
- Hyperbaric medicine