



2.17 AC CONTRACTORS YARD

11718 EASTERN AVE | MIDDLE RIVER, MARYLAND 21220

FOR
LEASE



MACKENZIE

COMMERCIAL REAL ESTATE SERVICES, LLC

PROPERTY OVERVIEW

HIGHLIGHTS:

- 2,400 +/- SF Warehouse/Shop
- 14' ft clear height
- 2.1 Acres of outside storage
- Corner Lot
- Fully fenced and secured with multiple access points
- Three (3) drive-in doors, and One (1) Oversized drive-in
- Three-phase power

BUILDING SIZE:

2,400 SF WAREHOUSE/SHOP

LOT SIZE:

2.17 ACRES TOTAL

LOADING:

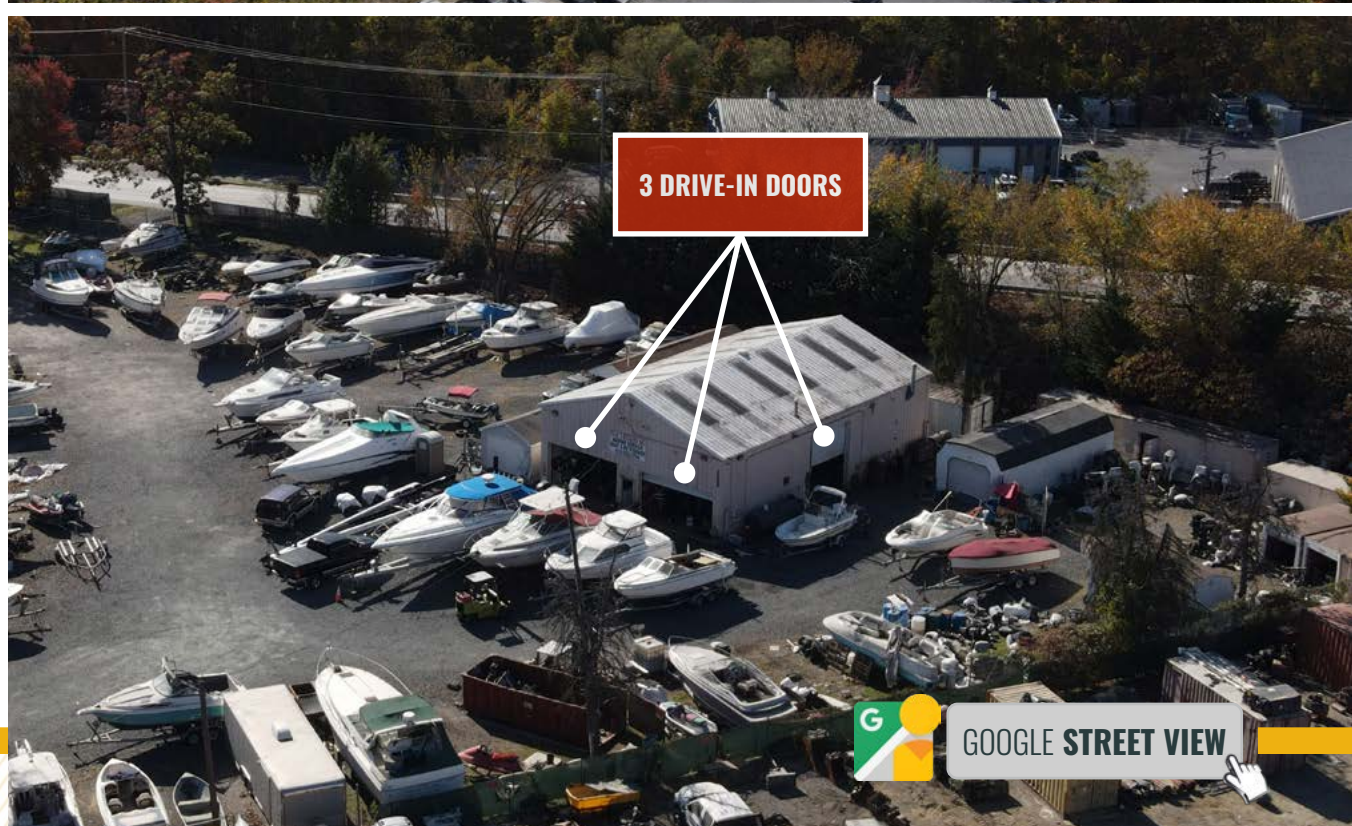
3 DRIVE-INS, 1 OVERSIZED

ZONING:

ML

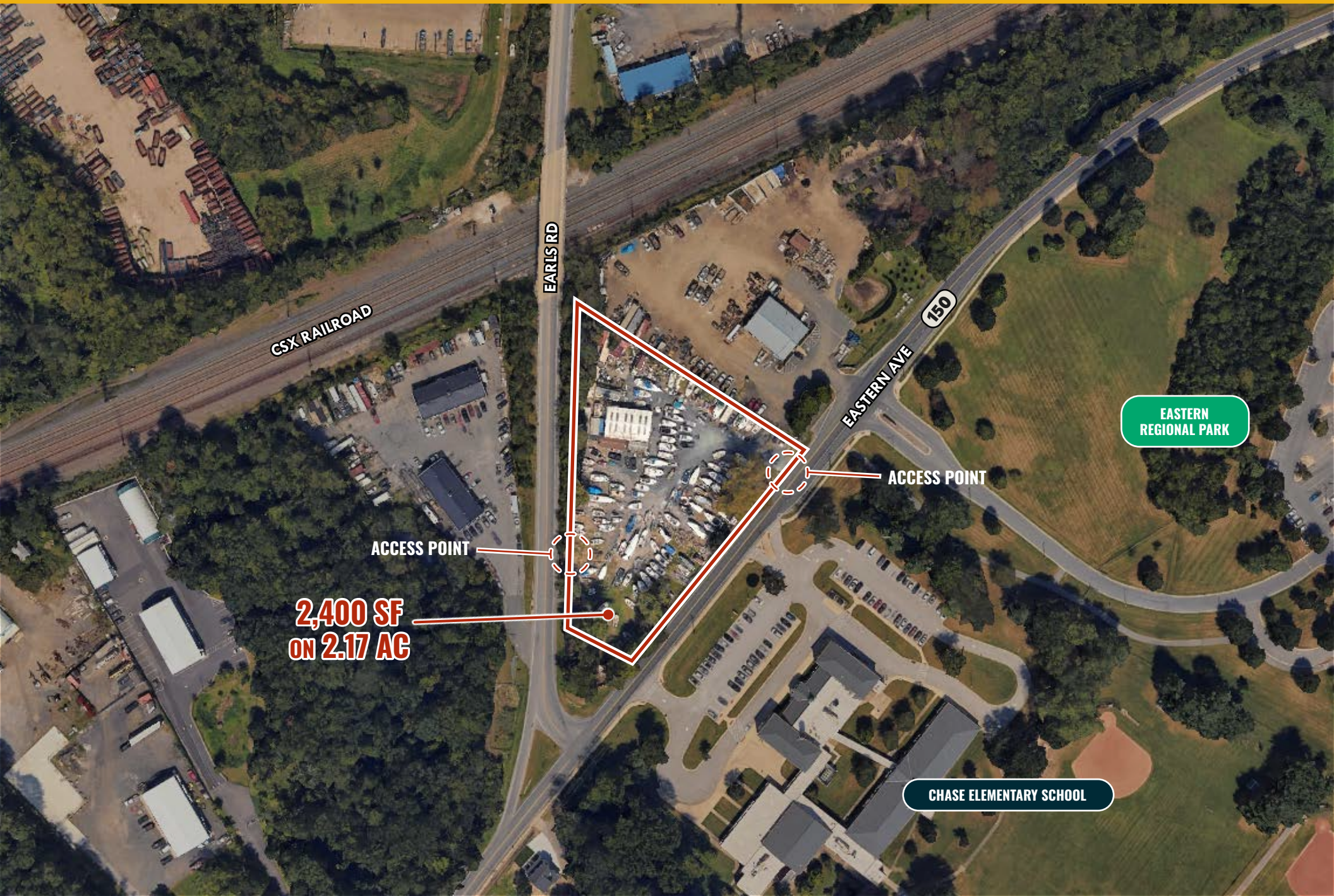
PRICE:

\$12,000/MONTH, NNN



GOOGLE STREET VIEW

AERIAL



CSX RAILROAD

EARLS RD

EASTERN AVE

150

EASTERN
REGIONAL PARK

ACCESS POINT

ACCESS POINT

2,400 SF
ON 2.17 AC

CHASE ELEMENTARY SCHOOL

TRADE AREA

DRIVING DISTANCE TO:

 6.2 MILES
11 MIN. DRIVE

 4.2 MILES
8 MIN. DRIVE

 7.9 MILES
13 MIN. DRIVE

 27 MILES
35 MIN. DRIVE

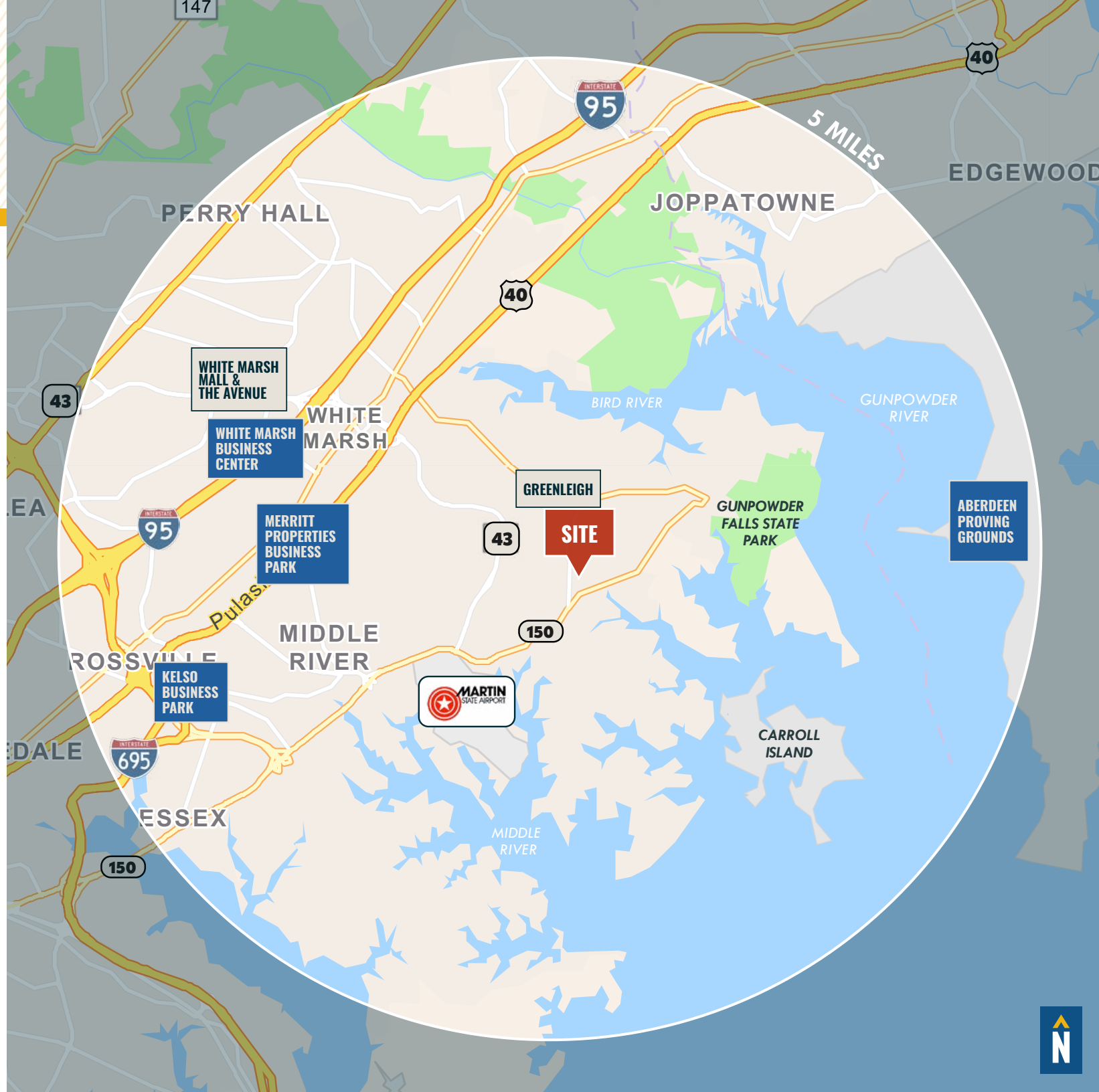
 13.4 MILES
28 MIN. DRIVE
(SEAGIRT MARINE TERMINAL)

BALTIMORE, MD 13 MILES
35 MIN.

WASHINGTON, DC 54.6 MILES
1 HR. 28 MIN.

PHILADELPHIA, PA 95.2 MILES
1 HR. 39 MIN.

RICHMOND, VA 165 MILES
3 HRS.



FOR MORE INFO **CONTACT:**



CHRIS BOLAND

VICE PRESIDENT

410.494.6644

CBOLAND@mackenziecommercial.com



PATRICK SMITH, SIOR

VICE PRESIDENT

410.494.4866

PSMITH@mackenziecommercial.com



VISIT **PROPERTY PAGE** FOR MORE INFORMATION.



MACKENZIE

COMMERCIAL REAL ESTATE SERVICES, LLC

410-821-8585

**2328 W. Joppa Road, Suite 200
Lutherville, MD 21093**

OFFICES IN: ANNAPOLIS, MD BALTIMORE, MD BEL AIR, MD COLUMBIA, MD **LUTHERVILLE, MD** CHARLOTTESVILLE, VA

www.MACKENZIECOMMERCIAL.com

No warranty or representation, expressed or implied, is made as to the accuracy of the information contained herein, and same is submitted subject to errors, omissions, change of price, rental or other conditions, withdrawal without notice, and to any specific listing conditions imposed by our principals.