

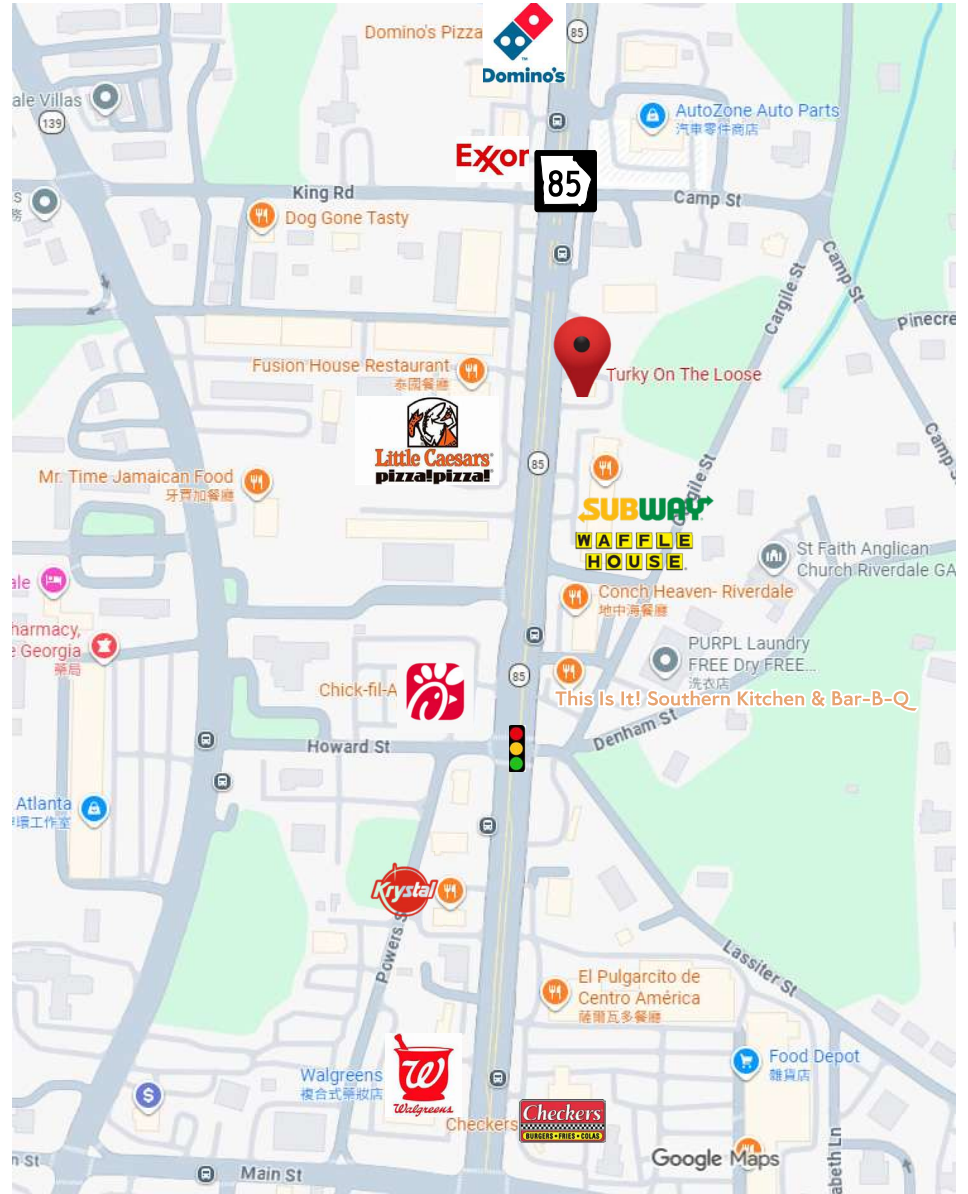
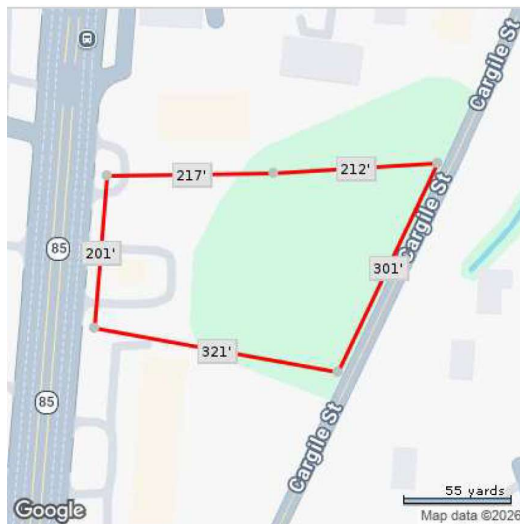
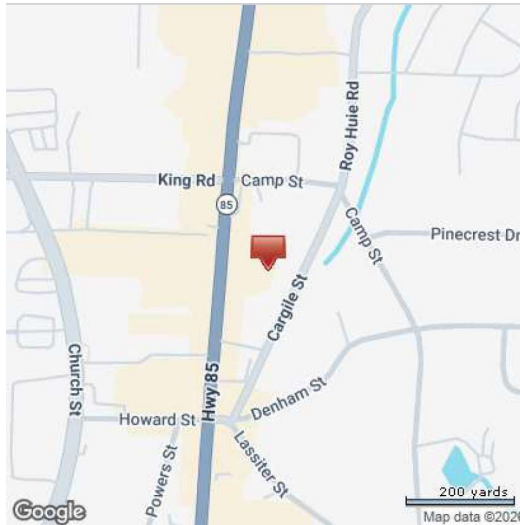
FOR SALE | Asking Price: \$1.0M HIGH-TRAFFIC COMMERCIAL PROPERTY

📍 6494 GA-85, Riverdale, GA 30274

**BERKSHIRE
HATHAWAY**
HOMESERVICES

GEORGIA
PROPERTIES

COMMERCIAL DIVISION



Mei Cheng, CCIM 鄭惠媚

C: 678.596.6001

O: 770.844.8484

mei.cheng@bhhsgeorgia.com

www.MeiCheng.BHHSGeorgia.com





6494 GA-85, Riverdale, GA 30274

Parcel #13138D D007

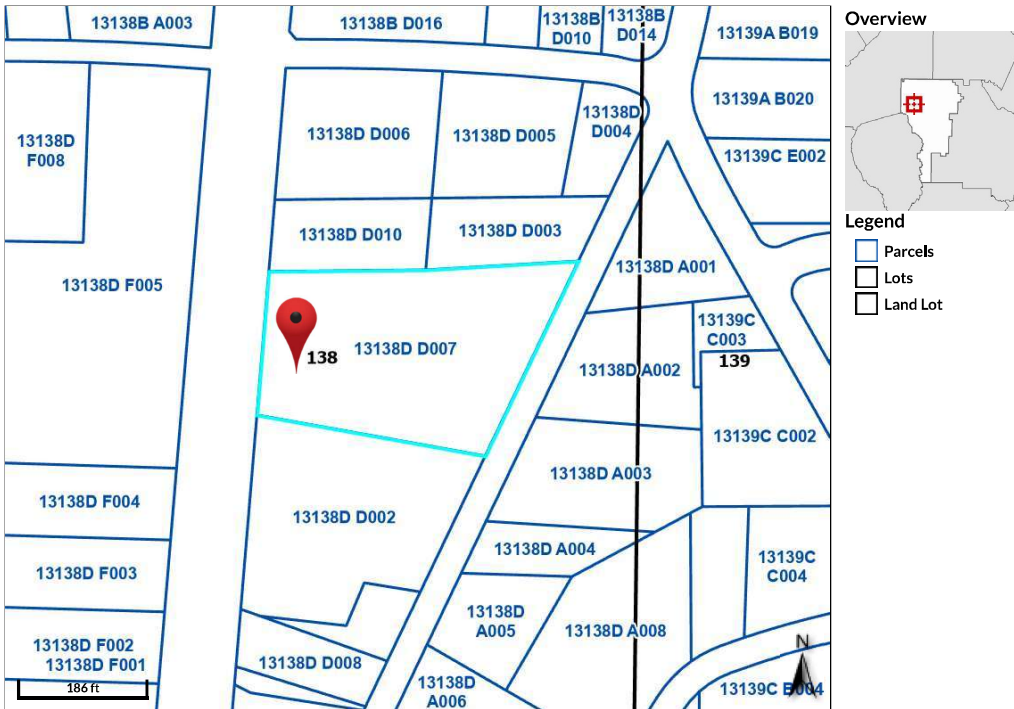
2.05 +/- Acres | Zoned GC

**BERKSHIRE
HATHAWAY**
HOMESERVICES

GEORGIA
PROPERTIES

COMMERCIAL DIVISION

 **qPublic.net**™ Clayton County, GA



Property Highlights:

- **High-Exposure Location:** Boasting an impressive traffic count of **40,000+** vehicles per day.
- **2.05 +/- Acres** of General Commercial (**GC**) zoned land.
- **Dual Curb Cuts:** frontage on **GA-85** and rear access via **Cargile St.**
- **Current Use:** Operating as a high-visibility **"To-Go"** restaurant.
- **Potential:** An ideal candidate for **retail re-development** or specialized commercial use.



Mei Cheng, CCIM 鄭惠媚

C: 678.596.6001

O: 770.844.8484

mei.cheng@bhhsgeorgia.com

www.MeiCheng.BHHSGeorgia.com


BERKSHIRE HATHAWAY
COMMERCIAL REAL ESTATE

2



6494 GA-85, Riverdale, GA 30274
 Parcel #13138D D007
 2.05 +/- Acres | Zoned GC

**BERKSHIRE
 HATHAWAY**
 HOMESERVICES
 GEORGIA
 PROPERTIES

COMMERCIAL DIVISION



frontage on GA-85



suited for retail re-development.



40,000+ Cars Per Day



Dual Curb Cuts



Mei Cheng, CCIM 鄭惠媚

C: 678.596.6001

O: 770.844.8484

mei.cheng@bhhsgeorgia.com

www.MeiCheng.BHHSGeorgia.com

