

9401 GENERAL DRIVE
PLYMOUTH, MICHIGAN

OFFICE FOR LEASE
2,449 Square Feet Available



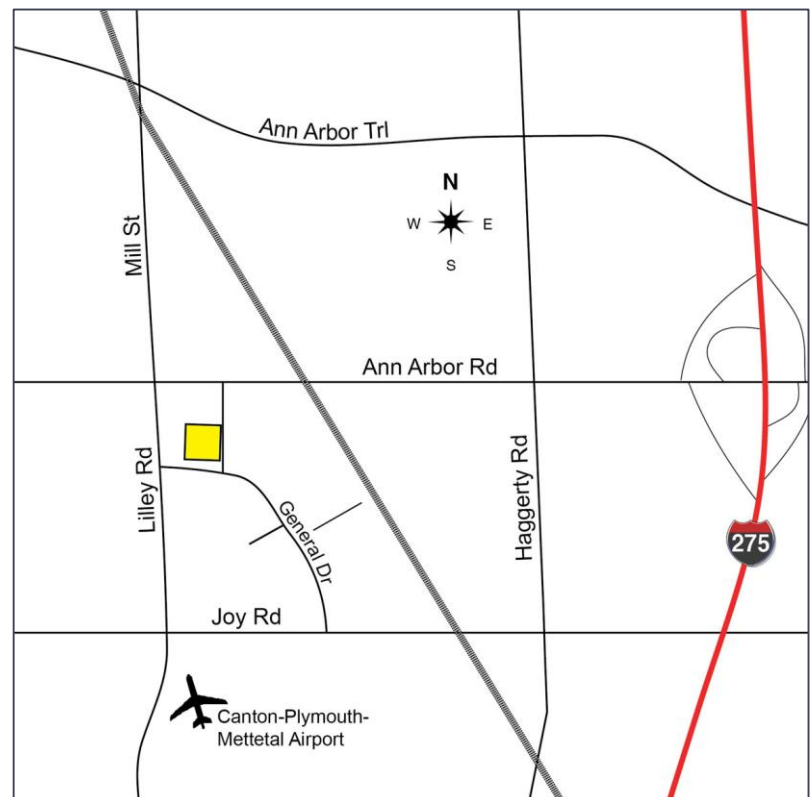
**SIGNATURE
ASSOCIATES**
KNOW SIGNATURE | KNOW RESULTS

LILLEY EXECUTIVE PLAZA II



PROPERTY FEATURES

- 2,449 square feet available
- Furnished, move-in ready suite
- Recently renovated common areas and restrooms
- New roof & HVAC in 2015
- Ample parking
- Close to M-14, I-96 and I-275
- Lease Rate: \$16.50/sf Gross + Utilities



For more information, please contact:

JASON STOUGH
(248) 948 4180

jstough@signatureassociates.com

DAVE GREEN
(248) 948 4184

dgreen@signatureassociates.com

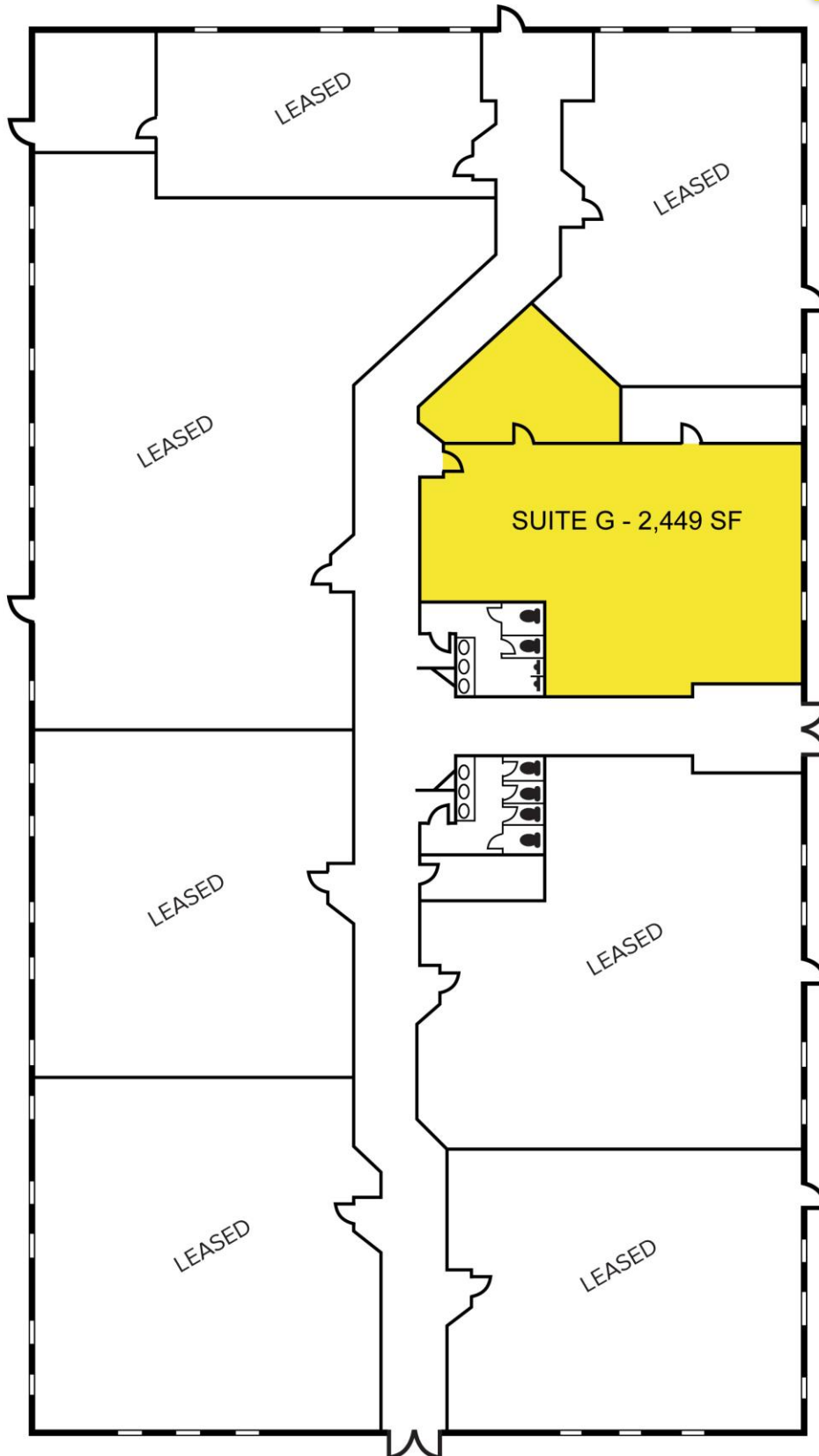
SIGNATURE ASSOCIATES
One Towne Square, Suite 1200
Southfield, MI 48076
www.signatureassociates.com

9401 General Drive - Plymouth, Michigan

Office For Lease

2,449
Square Feet
AVAILABLE

Floor Plans
Suite G – 2,449 SF



For more information, please contact:

JASON STOUGH

(248) 948 4180

jstough@signatureassociates.com

DAVE GREEN

(248) 948 4184

dgreen@signatureassociates.com

SIGNATURE ASSOCIATES

One Towne Square, Suite 1200

Southfield, MI 48076

www.signatureassociates.com

Information is subject to verification and no liability for errors or omissions is assumed. Price is subject to change and listing withdrawal.