

# THRIVING RESTAURANT FOR SALE

2525 N Young Blvd, Chiefland, FL 32626

**9,596± SF | \$1,500,000**



**BRENT LINE**

352.281.0996

[bline@lee-associates.com](mailto:bline@lee-associates.com)

**BRIAN OEN**

352.494.2100

[boen@lee-associates.com](mailto:boen@lee-associates.com)

**KYLIE LAVALLEE**

903.417.9738

[klavallee@lee-associates.com](mailto:klavallee@lee-associates.com)

 **LEE &  
ASSOCIATES**  
COMMERCIAL REAL ESTATE SERVICES

# PROPERTY SUMMARY

2525 N Young Blvd, Chiefland, FL 32626



## PROPERTY DESCRIPTION

Presenting 2525 N Young Blvd, a rare opportunity to acquire a thriving, long-established restaurant business and real estate. This 9,596 square foot building, built in 1950, houses a successful restaurant unit within the NZ zoning district. With a rich history and loyal customer base, this turnkey restaurant and property are strategically located in the bustling Chiefland area. The well-maintained building and restaurant infrastructure provide the ideal setting for a seamless transition, offering a prime opportunity for an entrepreneur to take over a beloved dining establishment and continue its legacy of success in this vibrant community.

## PROPERTY HIGHLIGHTS

- 9,596 square foot building
- One unit
- Built in 1950
- Zoned NZ
- Strategically located in Chiefland area

## OFFERING SUMMARY

Sale Price:	\$1,500,000
Number of Units:	1
Lot Size:	2.17 Acres
Building Size:	9,596 SF

## DEMOGRAPHICS

	1 MILE	3 MILES	5 MILES
Total Households	71	1,132	2,463
Total Population	189	2,732	6,051
Average HH Income	\$85,638	\$75,190	\$70,514

**Brent Line**  
352.420.9889  
bline@lee-associates.com

**Brian Oen**  
352.420.9889  
boen@lee-associates.com

**Kylie Lavalley**  
352.420.9889  
klavalley@lee-associates.com

# ADDITIONAL PHOTOS

2525 N Young Blvd, Chiefland, FL 32626



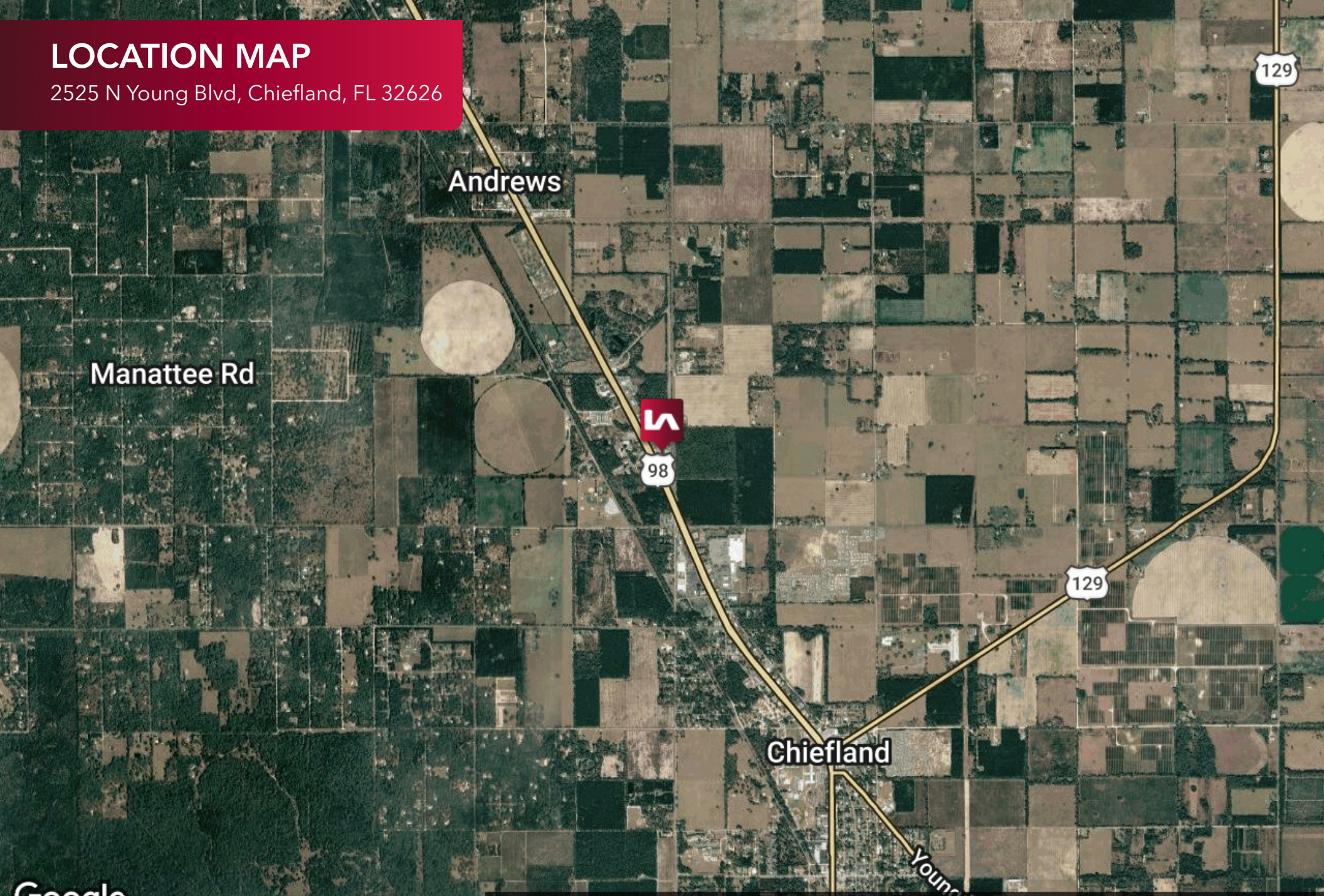
Brent Line  
352.420.9889  
bline@lee-associates.com

Brian Oen  
352.420.9889  
boen@lee-associates.com

Kylie Lavalley  
352.420.9889  
klavalley@lee-associates.com

# LOCATION MAP

2525 N Young Blvd, Chiefland, FL 32626



Google

Map data ©2026 Imagery ©2026 Airbus, Landsat/Copernicus, Maxar Technologies

**Brent Line**  
352.420.9889  
bline@lee-associates.com

**Brian Oen**  
352.420.9889  
boen@lee-associates.com

**Kylie Lavalley**  
352.420.9889  
klavalley@lee-associates.com

**LEE & ASSOCIATES**  
COMMERCIAL REAL ESTATE SERVICES

2525 N Young Blvd, Chiefland, FL 32626

POPULATION	1 MILE	3 MILES	5 MILES
Total Population	189	2,732	6,051
Average Age	45.5	44.4	46.3
Average Age (Male)	48.9	43.7	45.6
Average Age (Female)	40.5	42.6	45.2

HOUSEHOLDS & INCOME	1 MILE	3 MILES	5 MILES
Total Households	71	1,132	2,463
# of Persons per HH	2.7	2.4	2.5
Average HH Income	\$85,638	\$75,190	\$70,514
Average House Value	\$200,594	\$171,428	\$155,916

2023 American Community Survey (ACS)

