

5115 THIRTEENTH AVENUE

BETWEEN 51ST & 52ND STREETS | BOROUGH PARK

The glass entrance door features several elements: a circular logo with chopsticks and the text "Sushi MESHUNA" in the center; a "PERMITS" sign; a "Tenderloin" sign; a "We Heard You!!" poster with images of food and the text "We Now Carry a Complete Gluten Free Line!!" and "A Year's Appetizers and Tempura"; and contact information at the bottom: "5115 13TH AVE" and "718-484-8085".

A large white sign with a red and black logo consisting of a stylized 'W' inside a circle. The text "WOW WIRELESS" is written in red above the logo, and "WOW" is written in black to the right of the logo.

5115 THIRTEENTH AVENUE

BETWEEN 51ST & 52ND STREETS | BOROUGH PARK

PROPERTY HIGHLIGHTS

- All uses considered
- Fully vented space – hood already in place
- Electric use only
- Excellent foot & vehicle traffic
- Located in a dense residential neighborhood
- Strong retail corridor
- Prime area in Borough Park, filled with kosher restaurants
- Neighboring tenants include:
Deli 52, Nori Bar, Super 13 Grocery, Glitz Gifts, Drapery Home Decor, Just Legs Hosiery, Regency Family Wear, Hi Baby, Capital Stores, Mega 53 Supermarket, Avenue Plaza hotel

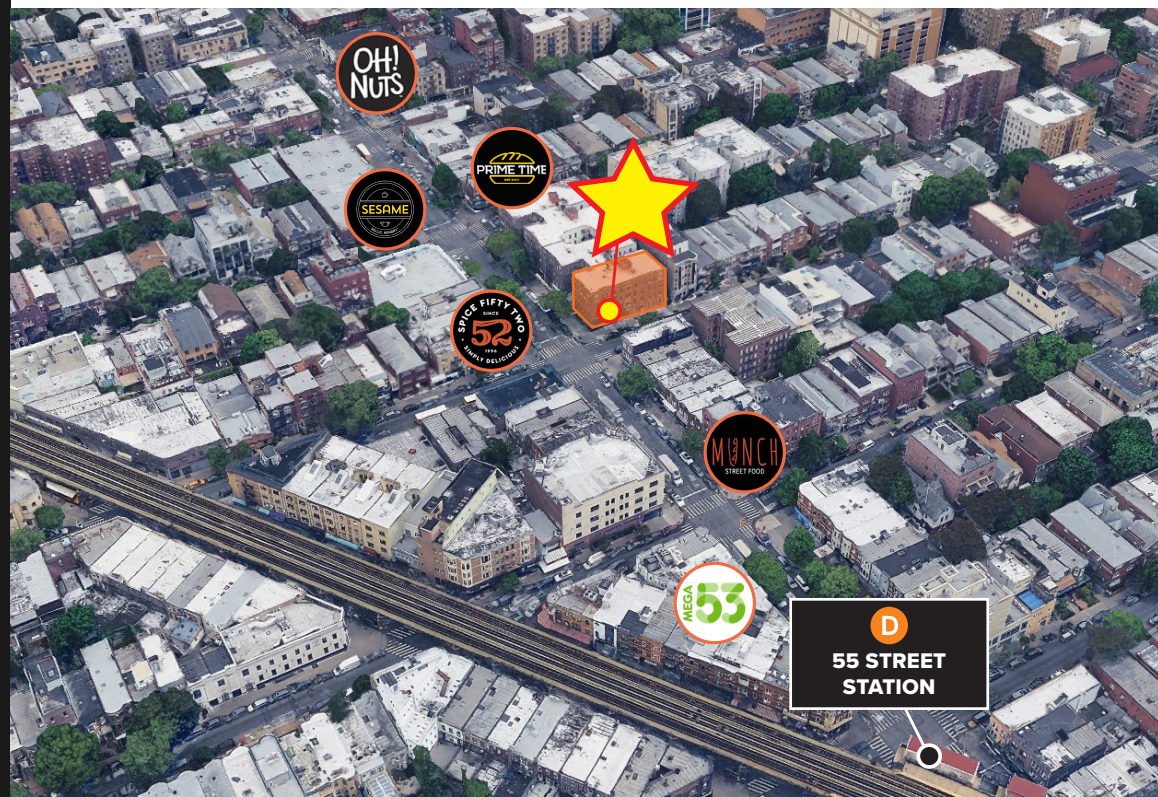
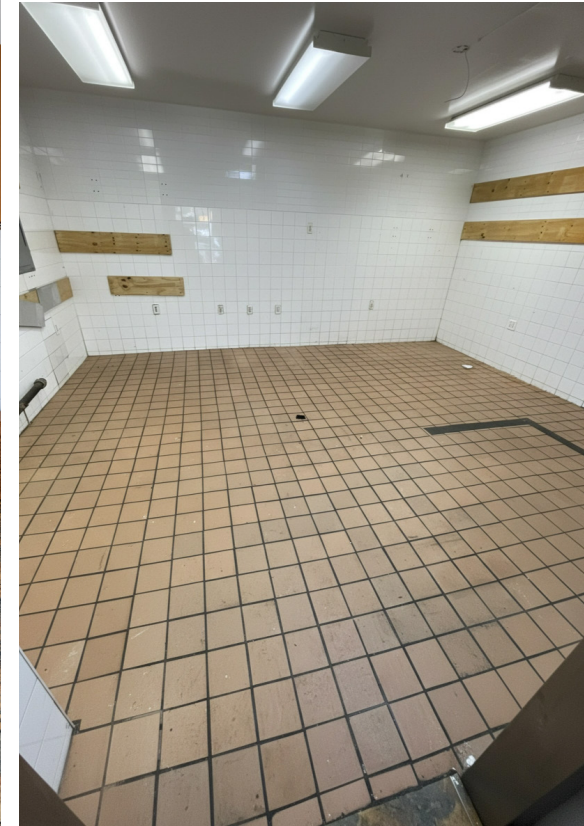
SIZE: 650 SF Ground Floor

FRONTAGE: 12'

POSSESSION: Immediate

ASKING RENT: Upon Request

TRANSPORTATION: D, B16



5115 THIRTEENTH AVENUE

BETWEEN 51ST & 52ND STREETS | BOROUGH PARK

FOR MORE INFORMATION,
PLEASE CONTACT:

CORY MAIS

201.637.0056 | CMais@ksrny.com

DAVID GREEN

516.320.0260 | DGreen@ksrny.com

