

419 WEST 13TH STREET

MEATPACKING DISTRICT



IRG
ISA REALTY GROUP



AREA OVERVIEW

The Meatpacking District is a dynamic neighborhood blending luxury, culture, and history.

Centrally located within the Meatpacking District, **419 West 13th Street** is surrounded by the headquarters of leading tech, media, commerce, and financial corporations.

Home to flagship stores from high-end brands, the district's cobblestone streets add to its charm. For food lovers, the Meatpacking District offers everything from gourmet dining to casual bites. Iconic spots provide refined culinary experiences, while cozy cafes and rooftop bars offer breathtaking views of the Hudson River.

Cultural attractions include the Whitney Museum of American Art, public art installations, the man-made public park Little Island, and the High Line.

With immediate access to Citi Bikes, the West Side Highway, and the and subway lines, 419 West 13th Street offers unparalleled convenience for both work and leisure.

PROPERTY OVERVIEW



419 WEST 13TH STREET Commercial Office Space for Lease

- Column Free Elevator building with Great Lighting and Exposure / Additional Staircase in Place to Ground Floor.
- Each floor is inclusive of Private ADA Restrooms, High Ceilings, LED Lighting, Kitchenette, Oversized Windows, etc..
- Full floor lease opportunities available in the heart of the Meatpacking District.
- Ideal Mix of Users from Office boutique financial services to retailers in the high-end fashion / fitness or beauty realm to esteemed medical practitioners, etc..
- Access to 1,2,3, A, C, E, L Subway Lines.

CENTRAL LOCATION



Tenth Avenue

THE HIGHLINE

Washington St

Ninth Avenue

Hudson Street

Gansevoort St

Milk

LLADRÓ

alice + olivia
BY STACEY BENDET



W 14th Street



W 13th Street



Little W 12th Street



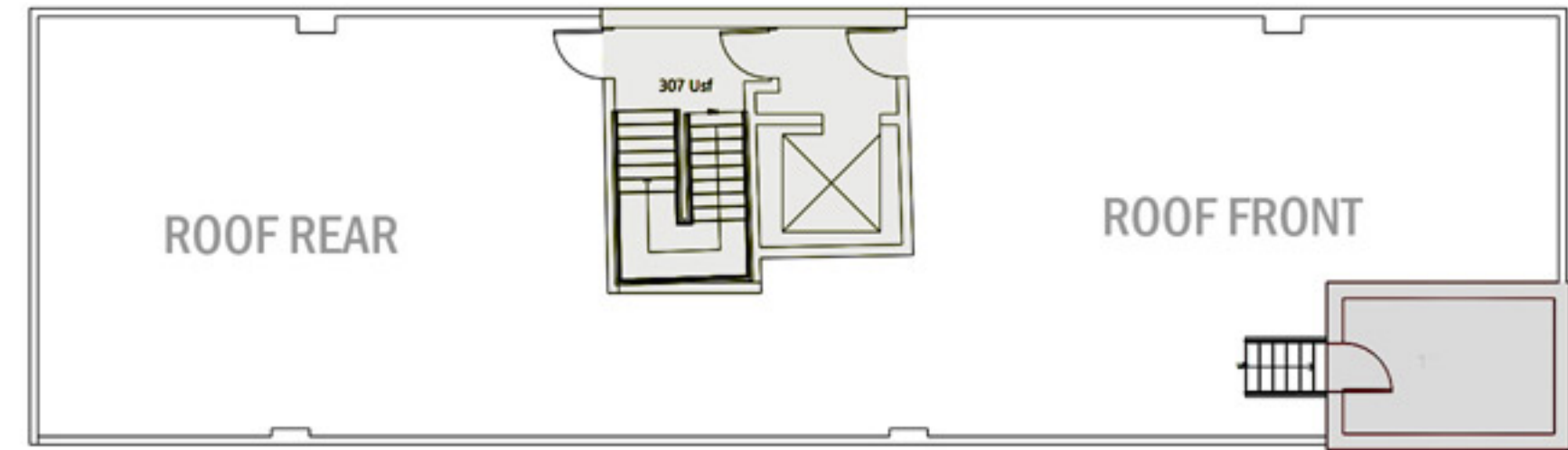
Neighboring Tenants Include:

Rolex, Rag & Bone, Soho House, Gucci, All Saints, Sephora, Maje, Sandro, Fig & Olive, Gansevoort Hotel, Leica, Restoration Hardware, The Whitney Museum

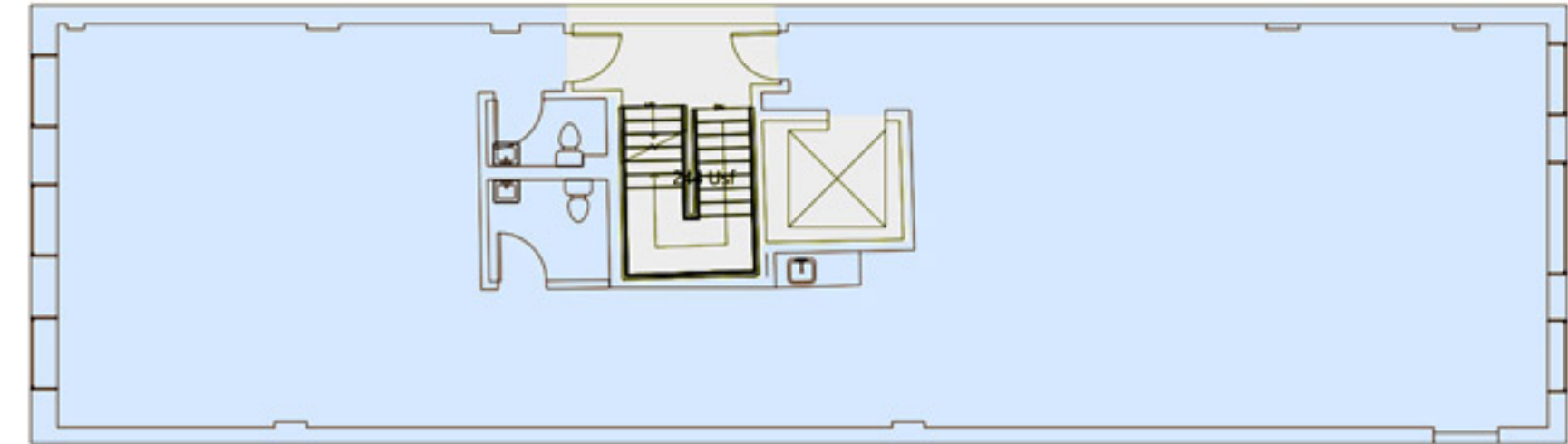
419 W 13TH STREET FLOORPLAN



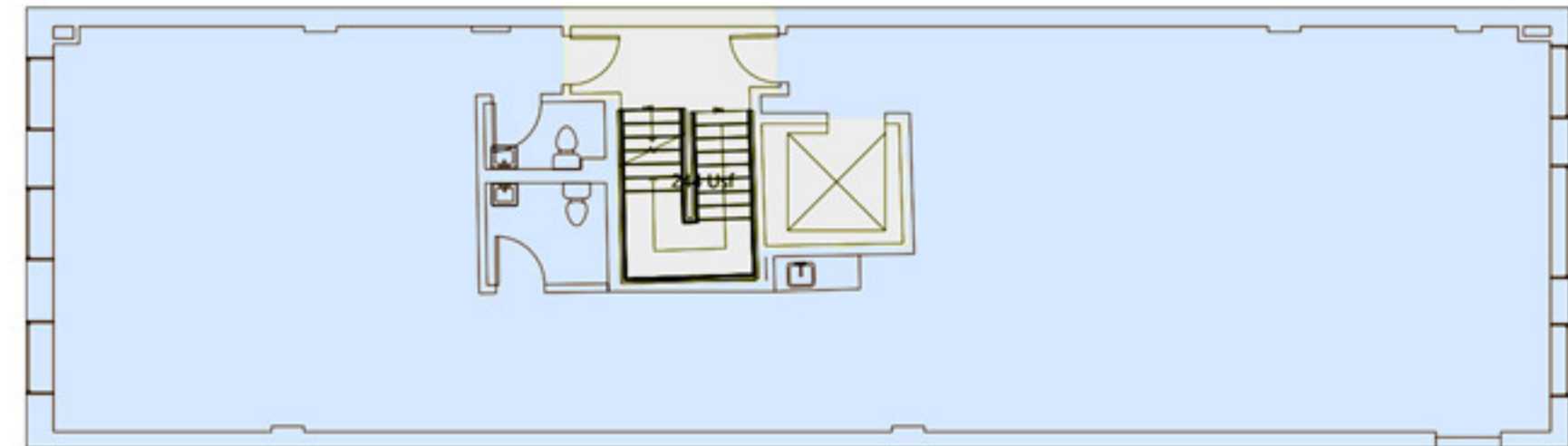
Top Floor + Rooftop Combo
or
Rooftop



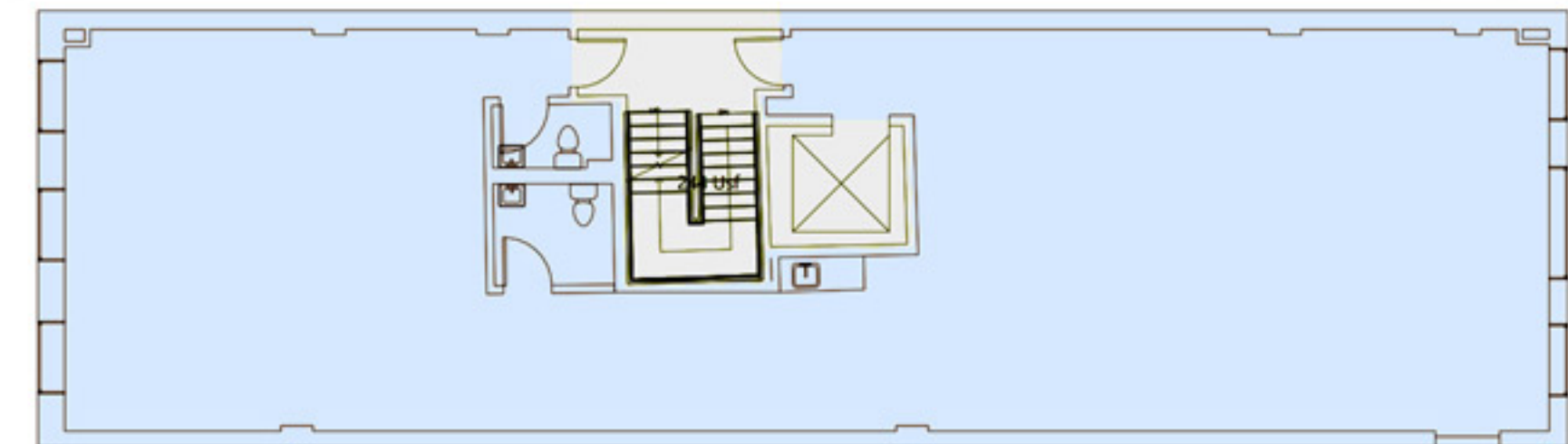
6th Floor
3,023 SF



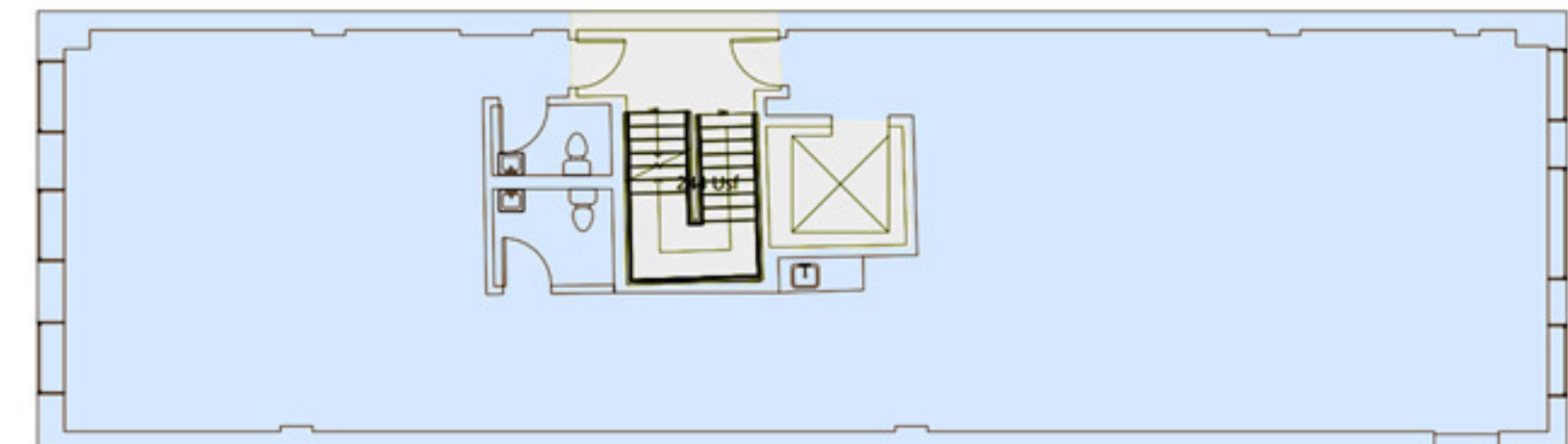
5th Floor
3,023 SF



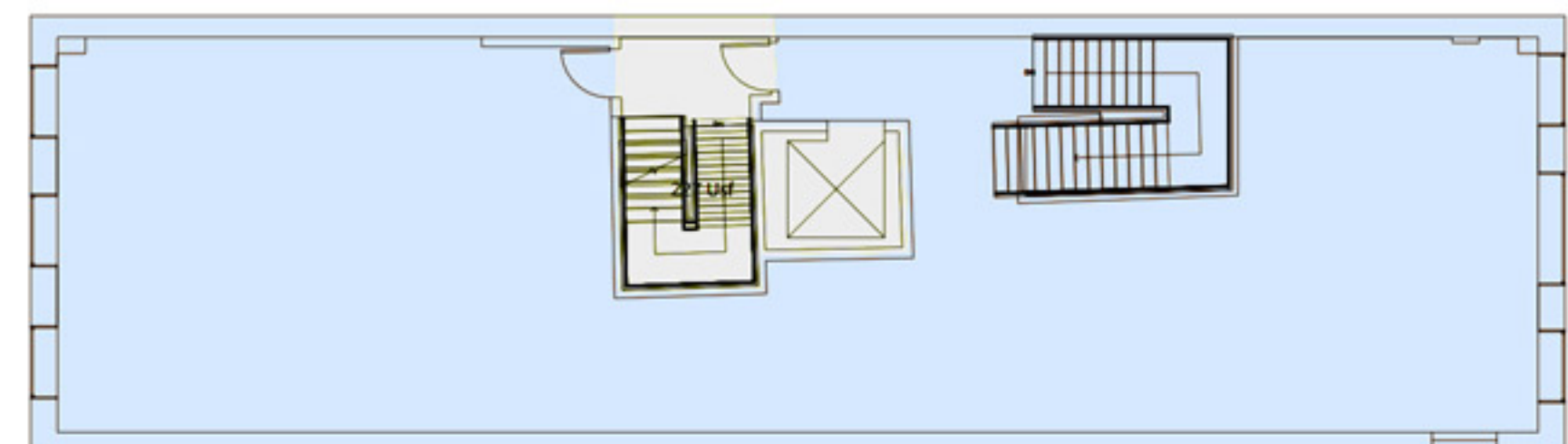
4th Floor
3,023 SF



3rd Floor
3,023 SF



2nd Floor
3,226 SF



13th STREET

SECOND FLOOR

IRG
ISA REALTY GROUP



Great Lighting and Exposure



current condition

**FRONT
SECTION**
(floors 3, 4, 5, 6)

artist rendering

IRG
ISA REALTY GROUP



current condition

REAR SECTION

(floors 3, 4, 5, 6)

Column Free Space and Open Floors



Brick Wall Hallway linking Front and Rear Sections



current condition

KITCHENETTE & HALLWAY

(floors 3, 4, 5, 6)

artist rendering

IRG
ISA REALTY GROUP

FRONT ROOFTOP



**Scenic Southern and
Western Views**

artist rendering

IRG
ISA REALTY GROUP

REAR ROOFTOP



Rear Roof Section for Privacy

artist rendering

IRG
ISA REALTY GROUP

HIGHLIGHTS & USES



Fashion / Showroom Users

Rare opportunity to scale operations within Meatpacking.

Raw full-floor spaces ideal for showroom, gallery, or creative retail.

High ceilings, oversized windows, and direct elevator access.

Top floor + rooftop combo available for premium brand presence.

Branding and signage opportunities in a highly visible corridor.

Surrounded by leading fashion, luxury, and lifestyle brands.

Creative / Tech Tenants

Raw, open floors ideal for custom build-outs and creative office layouts.

Full-floor presence with potential for private rooftop use.

Plug into Meatpacking's established energy with room to grow.

Steps from the High Line, Whitney Museum, Soho House, and Gansevoort.

Unique opportunity to expand without relocating from the neighborhood.

Surrounded by top-tier tech, media, and hospitality names.

High Ceilings, Wide Space



current condition

SAMPLE USAGE GALLERY

artist rendering

IRG
ISA REALTY GROUP



current condition

SAMPLE USAGE
RETAIL

Column Free Wide Space

artist rendering

IRG
ISA REALTY GROUP



IRG

ISA REALTY GROUP

ISA REALTY GROUP, LLC

9 EAST 45th STREET, 4th Floor

NEW YORK, NY 10017

212.689.0099

IsaRealtyGroup.com

LOUIS FRANCO **212.689.1646**

louis.franco@isarealtygroup.com

JOSEPH ISA **212.689.1645**

joseph.isa@isarealtygroup.com