



FOR SALE

Retail Building For Sale

1421 S MAIN STREET
WEST BEND, WI 53095

BUILDING SIZE (SF)

8,460 SF

LOT SIZE

0.51 Acres

SALE PRICE

\$850,000

PROPERTY HIGHLIGHTS

- Stand Alone Retail Building on South Main Street
- Proposed Culver's Next Door
- Surrounded By Major Retailers
- Good Highway Access Via Paradise Drive

For more information, please contact:

Curt Pitzen

Director

t 414-395-4688

Curt.Pitzen@nmrk.com

757 N Broadway, Suite 700
Milwaukee, WI 53202



NEWMARK

The information contained herein has been obtained from sources deemed reliable but has not been verified and no guarantee, warranty or representation, either express or implied, is made with respect to such information. Terms of sale or lease and availability are subject to change or withdrawal without notice.

1421 S MAIN STREET / WEST BEND, WI 53095

LOCATION INFORMATION

Street Address	1421 S Main St
City, State, Zip	West Bend, WI 53095
County	Washington

BUILDING INFORMATION

Building Size	8,460 SF
Number of Floors	1
Year Built	1973
Number of Buildings	1

PROPERTY INFORMATION

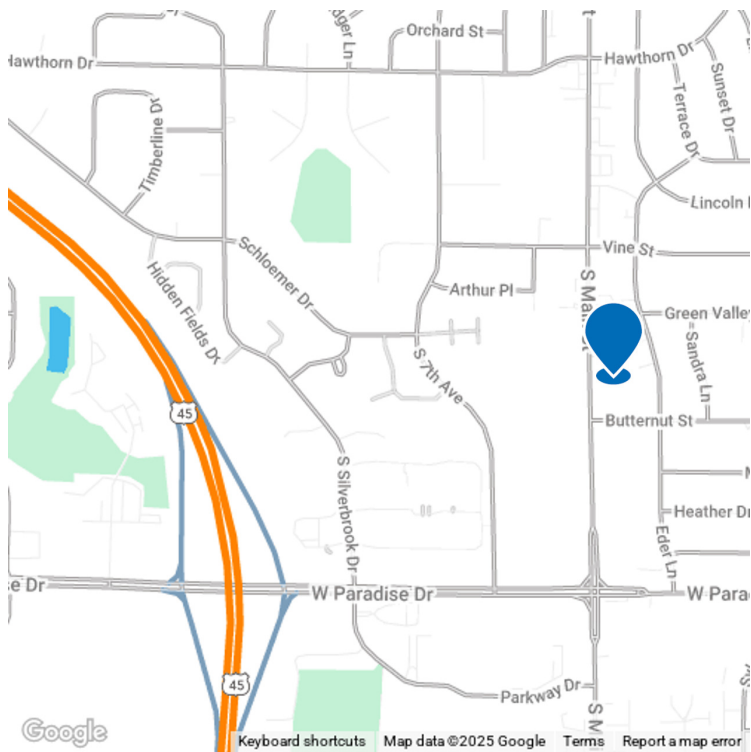
Property Type	Retail
Property Subtype	Free Standing Building
Zoning	B-1 Community Business
Lot Size	0.51 Acres
Tax Key #	291_11192432002
Taxes - 2025	\$9,717.63
Amenities	Dedicated Turn Lane Pylon Sign

PARKING & TRANSPORTATION

Parking Type	Surface
--------------	---------

UTILITIES

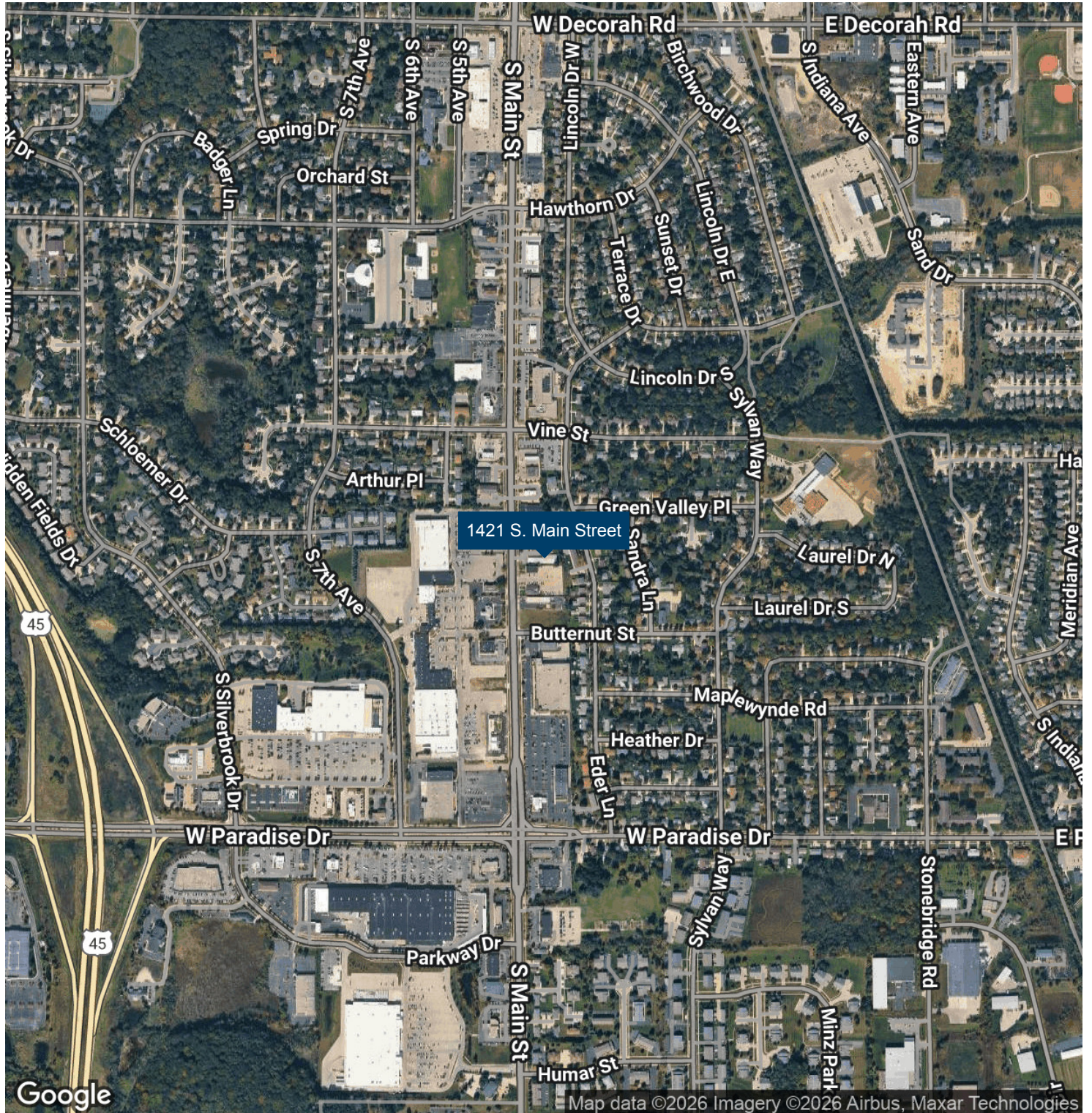
Water & Sewer	Municipal
---------------	-----------



Curt Pitzen
Director
t 414-395-4688
Curt.Pitzen@nmrk.com



1421 S MAIN ST / WEST BEND, WI 53095



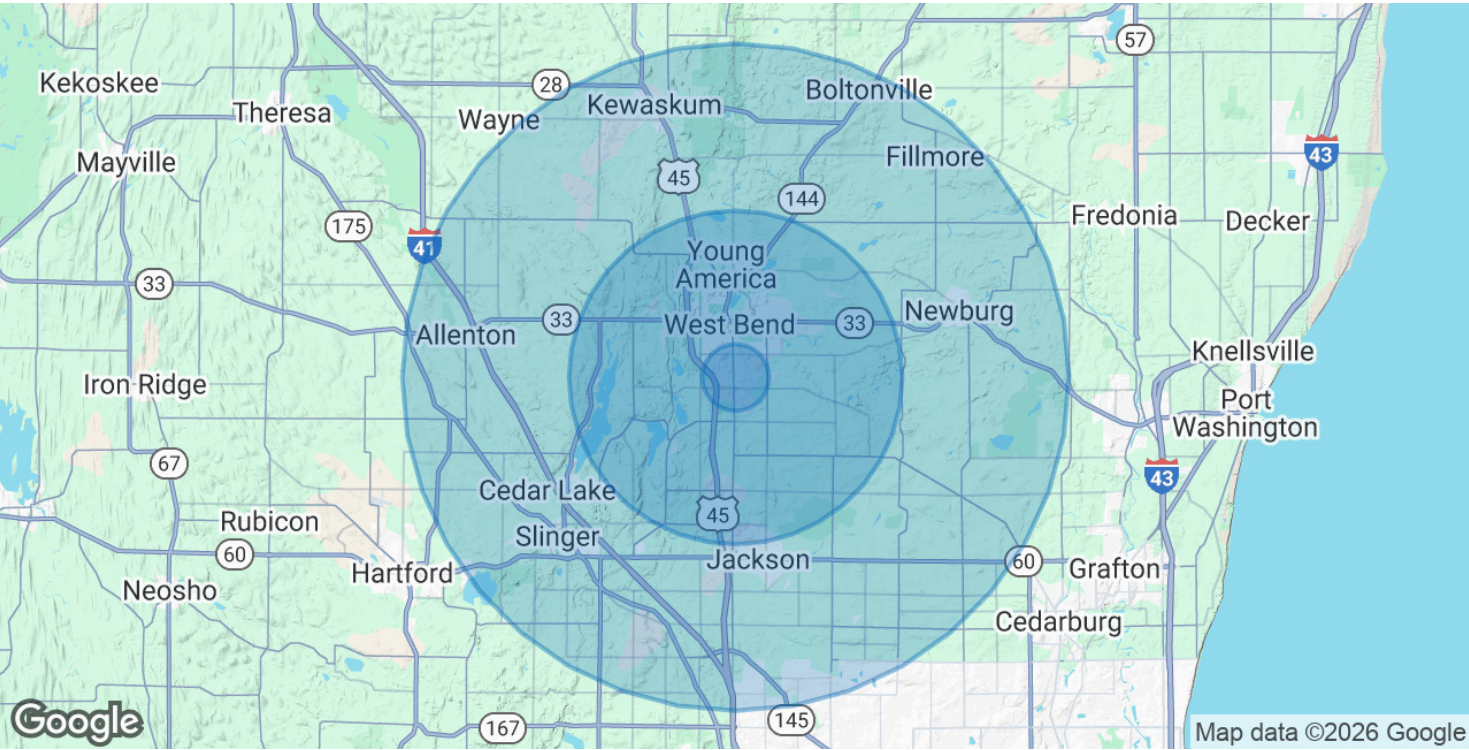
Curt Pitzen

Director

t 414-395-4688

Curt.Pitzen@nmrk.com

NEWMARK



POPULATION	1 MILE	5 MILES	10 MILES
Total Population	7,601	44,133	91,381
Average Age	42	43	43
Average Age (Male)	40	42	42
Average Age (Female)	43	44	44

HOUSEHOLDS & INCOME	1 MILE	5 MILES	10 MILES
Total Households	3,303	19,028	37,819
# of Persons per HH	2.3	2.3	2.4
Average HH Income	\$80,970	\$94,744	\$106,960
Average House Value	\$295,805	\$326,372	\$366,103

TRAFFIC COUNTS	
S. Main Street	15,400/day

Demographics data derived from AlphaMap

Curt Pitzen
Director
t 414-395-4688
Curt.Pitzen@nmrk.com

STATE OF WISCONSIN BROKER DISCLOSURE TO NON-RESIDENTIAL CUSTOMERS

Wisconsin law requires all real estate licensees to give the following information about brokerage services to prospective customers.

Prior to negotiating on your behalf the brokerage firm, or an agent associated with the firm, must provide you the following disclosure statement.

DISCLOSURE TO CUSTOMERS

You are a customer of the brokerage firm (hereinafter Firm). The Firm is either an agent of another party in the transaction or a subagent of another firm that is the agent of another party in the transaction. A broker or a salesperson acting on behalf of the Firm may provide brokerage services to you. Whenever the Firm is providing brokerage services to you, the Firm and its brokers and salespersons (hereinafter Agents) owe you, the customer, the following duties:

- The duty to provide brokerage services to you fairly and honestly.
- The duty to exercise reasonable skill and care in providing brokerage services to you.
- The duty to provide you with accurate information about market conditions within a reasonable time if you request it, unless disclosure of the information is prohibited by law.
- The duty to disclose to you in writing certain Material Adverse Facts about a property, unless disclosure of the information is prohibited by law (see “Definition of Material Adverse Facts” below).
- The duty to protect your confidentiality. Unless the law requires it, the Firm and its Agents will not disclose your confidential information or the confidential information of other parties (see “Confidentiality Notice To Customers” below).
- The duty to safeguard trust funds and other property held by the Firm or its Agents.
- The duty, when negotiating, to present contract proposals in an objective and unbiased manner and disclose the advantages and disadvantages of the proposals.

Please review this information carefully. An agent of the Firm can answer your questions about brokerage services, but if you need legal advice, tax advice, or a professional property inspection, contact an attorney, tax advisor, or property inspector.

This disclosure is required by section 452.135 of the Wisconsin statutes and is for information only. It is a plain-language summary of the duties owed to a customer under section 452.133(1) of the Wisconsin statutes.

CONFIDENTIALITY NOTICE TO CUSTOMERS

The Firm and its Agents will keep confidential any information given to the Firm or its Agents in confidence, or any information obtained by the Firm or its Agents that a reasonable person would want to be kept confidential, unless the information must be disclosed by law or you authorize the Firm to disclose particular information. The Firm and its Agents shall continue to keep the information confidential after the Firm is no longer providing brokerage services to you.

The following information is required to be disclosed by law:

1. Material Adverse Facts, as defined in Wis. Stat. §452.01 (5g) (see “definition of material adverse facts” below).
2. Any facts known by the Firm or its Agents that contradict any information included in a written inspection report on the property or real estate that is the subject of the transaction.

To ensure that the Firm and its Agents are aware of what specific information you consider confidential, you may list that information below or provide that information to the Firm or its Agents by other means. At a later time, you may also provide the Firm or its Agents with other information you consider to be confidential.

CONFIDENTIAL INFORMATION: _____

NON-CONFIDENTIAL INFORMATION (The following information may be disclosed by the Firm and its Agents): _____

(INSERT INFORMATION YOU AUTHORIZE TO BE DISCLOSED SUCH AS FINANCIAL QUALIFICATION INFORMATION)

DEFINITION OF MATERIAL ADVERSE FACTS

A “Material Adverse Fact” is defined in Wis. Stat. §452.01 (5g) as an Adverse Fact that a party indicates is of such significance, or that is generally recognized by a competent licensee as being of such significance to a reasonable party, that it affects or would affect the party’s decision to enter into a contract or agreement concerning a transaction or affects or would affect the party’s decision about the terms of such a contract or agreement.

An “Adverse Fact” is defined in Wis. Stat. §452.01 (1e) as a condition or occurrence that a competent licensee generally recognizes will significantly and adversely affect the value of the property, significantly reduce the structural integrity of improvements to real estate, or present a significant health risk to occupants of the property; or information that indicates that a party to a transaction is not able to or does not intend to meet his or her obligations under a contract or agreement made concerning the transaction.

SEX OFFENDER REGISTRY

Notice: You may obtain information about the sex offender registry and persons registered with the registry by contacting the Wisconsin Department of Corrections on the Internet at <http://www.doc.wi.gov/> or by phone at 608-240-5830.

No representation is made as to the legal validity of any provision or the adequacy of any provision in any specific transaction.