



North
Park

NEWMARK



North Park



Pedestrian-friendly urban campus situated between beautiful, green Sydney Walton Square, San Francisco's waterfront, historic Jackson Square, and the amenity-rich Central Business District.

The neighborhood has developed into a hotspot for locals with a vibrant nightlife for those who work and live nearby.

Amenities

- ◇ BART, Muni, and The Ferry Building are all within four blocks with the F-line trolley stopping directly across the street.
- ◇ Dozens of restaurants and fine dining options in the area.
- ◇ Secured parking available.
- ◇ Kokkari, Safeway, and conveniences on the Square.
- ◇ Recently renovated Clubhouse amenity space for meetings and events



Jackson Square and Nearby Amenities

FOOD & BEVERAGE

- 1 Kokkari Estiatorio
- 2 Il Casaro Pizzeria
- 3 Kirimachi Ramen
- 4 Coquette
- 5 Sai's
- 6 Trestle
- 7 Royal Exchange
- 8 The Battery
- 9 COI
- 10 Cotogna
- 11 Quince
- 12 The Cigar Bar & Grill
- 13 Bix
- 14 Roka Akor
- 15 Wayfare Tavern
- 16 Subway
- 17 Waterfront
- 18 The Garden
- 19 House of Nanking
- 20 Hunan House
- 21 Begoni Bistro
- 22 Enjoy Vegetarian
- 23 Tosca
- 24 Pier 23
- 25 XICA Mexican
- 26 Seaglass
- 27 Safeway
- 28 Reveille Coffee Co.
- 29 Andytown Coffee

FITNESS

- 1 Bay Club at the Gateway
- 2 The Bar Method
- 3 Tribe Fitness, Yoga & Coaching
- 4 Fitness SF
- 5 Planet Fitness
- 6 Orangetheory
- 7 Empower

SHOPPING

- 1 Shinola
- 2 Aesop
- 3 Isabel Marant
- 4 Zimmerman
- 5 Mei Wah

FERRY BUILDING

- ◇ Mishka Dog Boutique
- ◇ Fort Point Brewing Co.
- ◇ Miette Patisserie
- ◇ Gott's Roadside
- ◇ Blue Bottle Coffee
- ◇ Senor Sisig
- ◇ Hog Island Oyster Co.
- ◇ The Epicurean Trader
- ◇ Acme Bread Company
- ◇ Tsar Nicoulai Caviar
- ◇ Heath Ceramics
- ◇ Dandelion Chocolates
- ◇ Fatted Calf

Availabilities

560 Davis

Suite	Sq Ft	Available	Notes
Suite 250	26,387	4/1/26	Former creative spec suite with park and Embarcadero views



650 Davis

Suite	Sq Ft	Available	Notes
Suite 250	6,835 RSF	Now	Available and ready for TI's. VC-quality spec plan underway.



75 Broadway

Suite	Sq Ft	Available	Notes
Suite 170	9,437 RSF	Now	Creative spec suite
Suite 180	4,623 RSF	Now	Creative spec suite. Furniture available
Suite 201	30,000 RSF (divisible)	Q1 2026	New to the market, creative, open plan
Suite 206	14,945 RSF	Now	Currently in shell condition



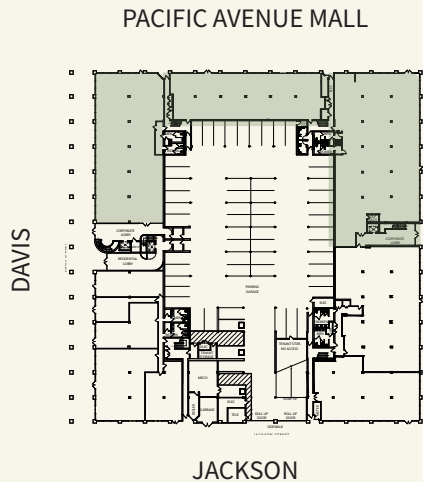


560 Davis - Suite 250

26,387 RSF - Available 4/1/26



- ◇ High-end creative improvements
- ◇ Approximately 23 enclosures of various sizes, large kitchen/all-hands, secondary kitchenette, room for approximately 200 work stations
- ◇ En-suite private showers
- ◇ Dramatic views of the Bay Bridge, Embarcadero, and connecting park

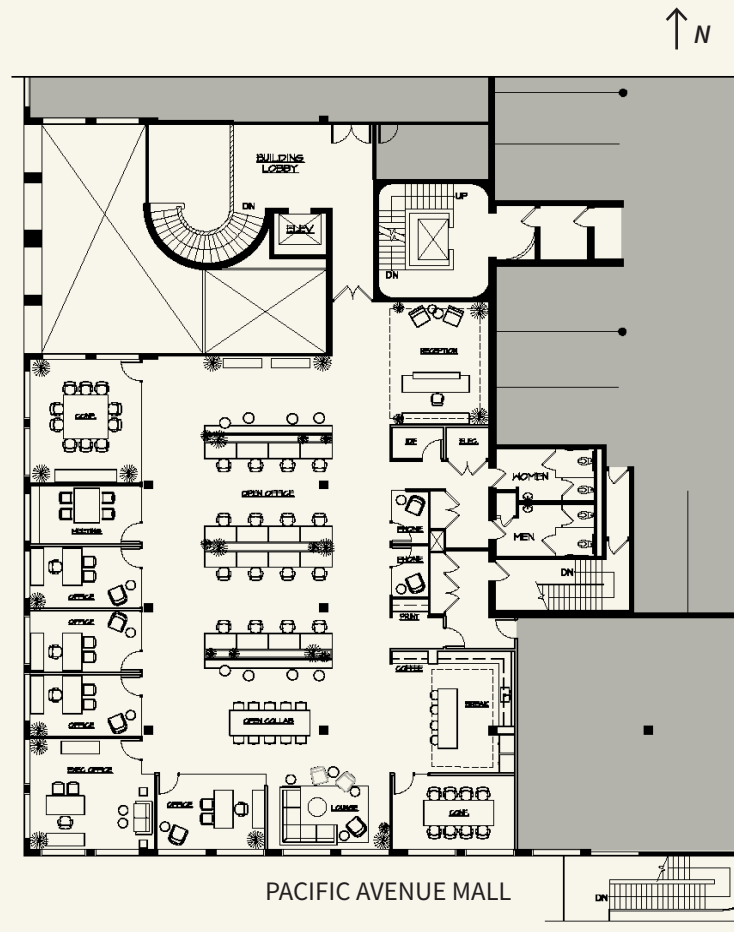




650 Davis - Suite 250

6,835 RSF - Available Now

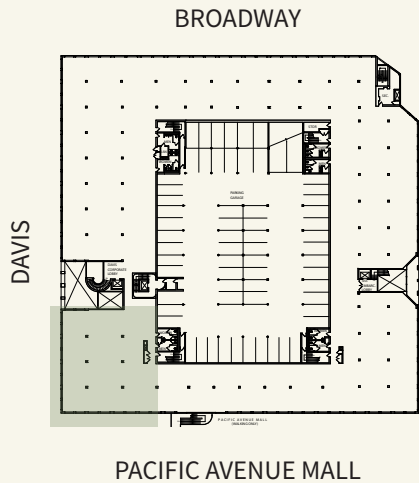
- ◇ High-end spec suite planned with creative finishes
- ◇ Available and ready for TI's. VC-quality spec plan underway.



VIEWS OF SYDNEY
WALTON SQUARE

PACIFIC AVENUE MALL

VIEWS OF
REDWOODS



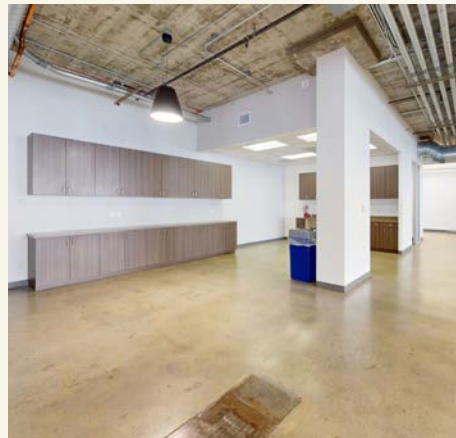
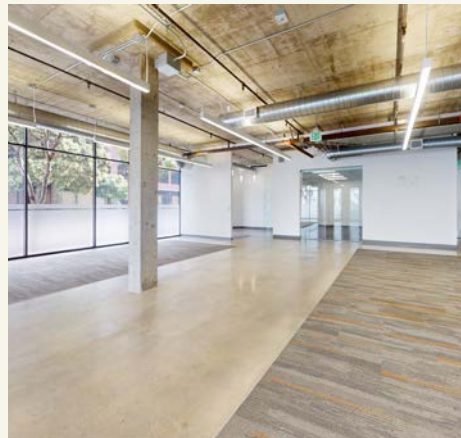
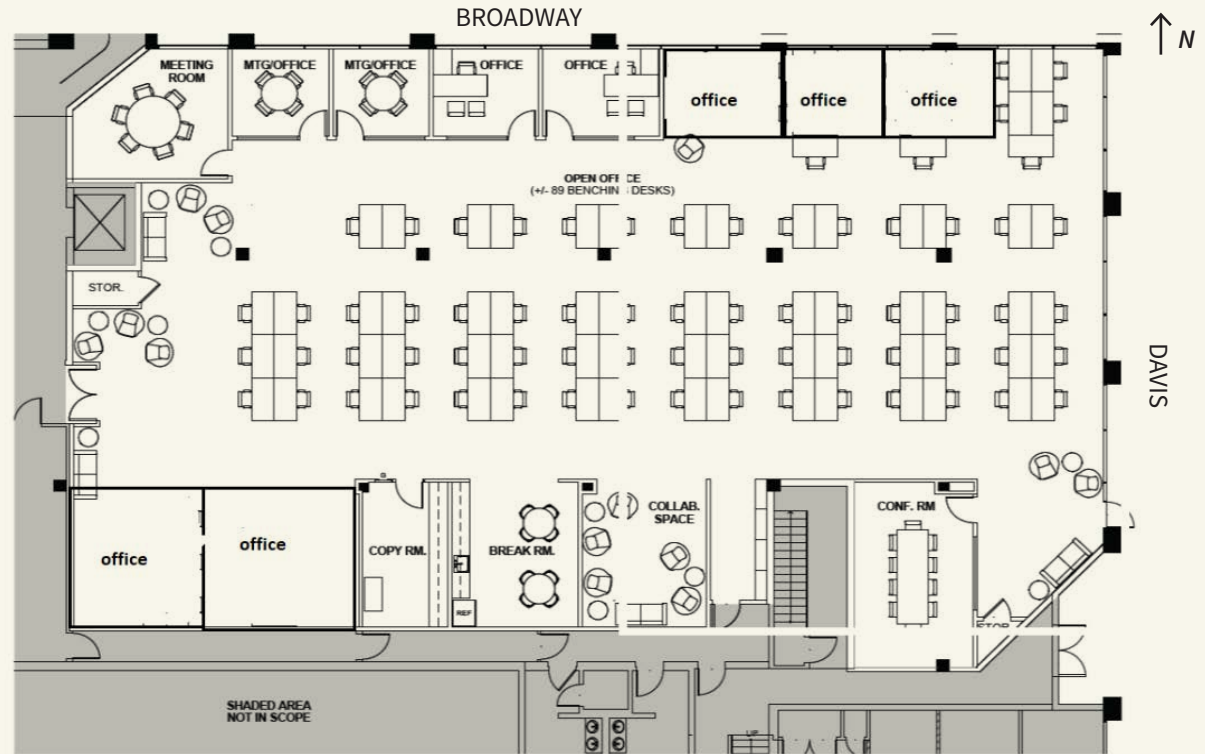


75 Broadway - Suite 170

9,437 RSF - Available Now



- ◇ First floor
- ◇ ±9,438 RSF
- ◇ 5 Offices & conference room
- ◇ Open Kitchen
- ◇ Polished concrete
- ◇ Exposed ceilings



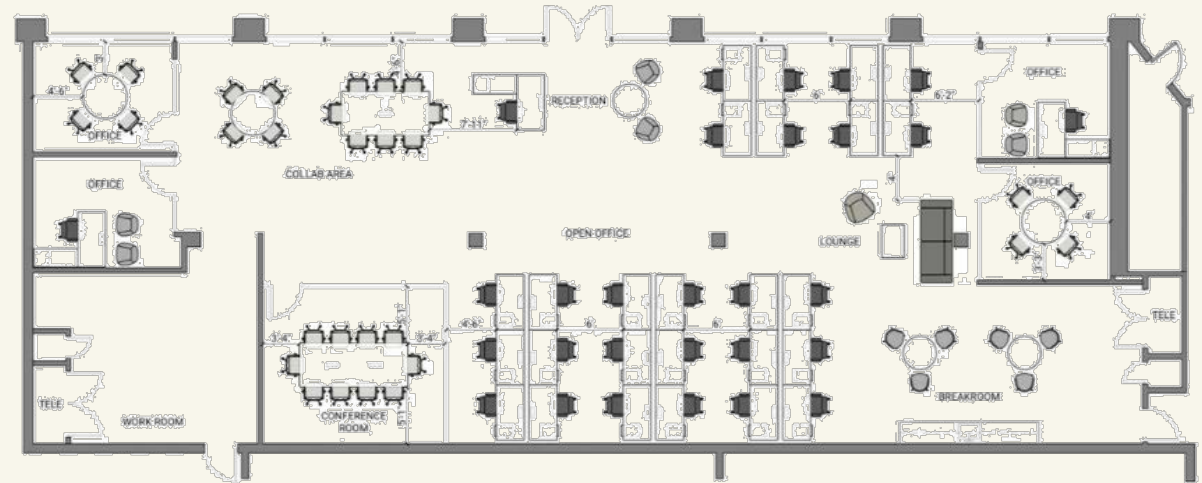
75 Broadway - Suite 180

4,623 RSF - Available Now

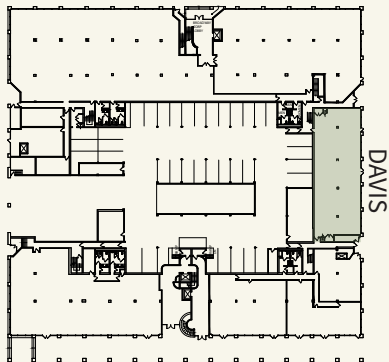


- ◇ First floor
- ◇ Creative spec suite
- ◇ To be delivered furnished
- ◇ Conference room, 4 offices/meeting rooms, open kitchen, open plan

DAVIS

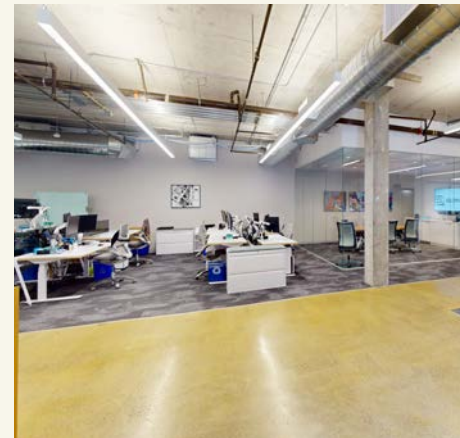


BROADWAY



DAVIS

PACIFIC AVENUE MALL

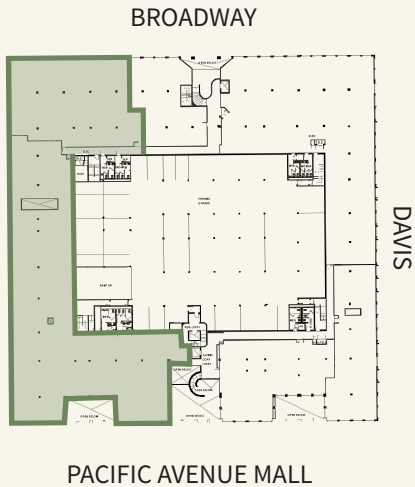
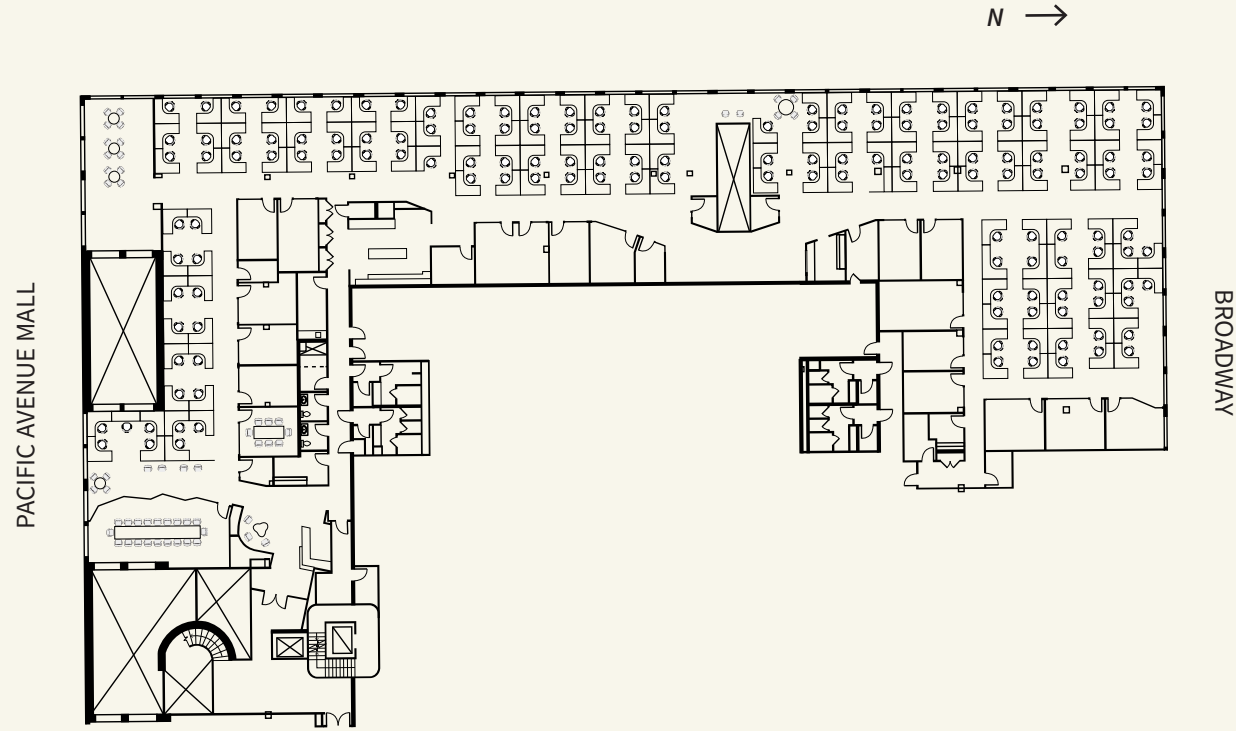


75 Broadway - Suite 201

19,000 - 30,000 RSF - Available Q1 2026



- ◇ Creative suite
- ◇ Park views
- ◇ 1 boardroom
- ◇ 18 meeting rooms
- ◇ Exclusive restrooms
- ◇ Shower
- ◇ Wellness room
- ◇ Kitchen
- ◇ Available Q1 2026, possibly earlier



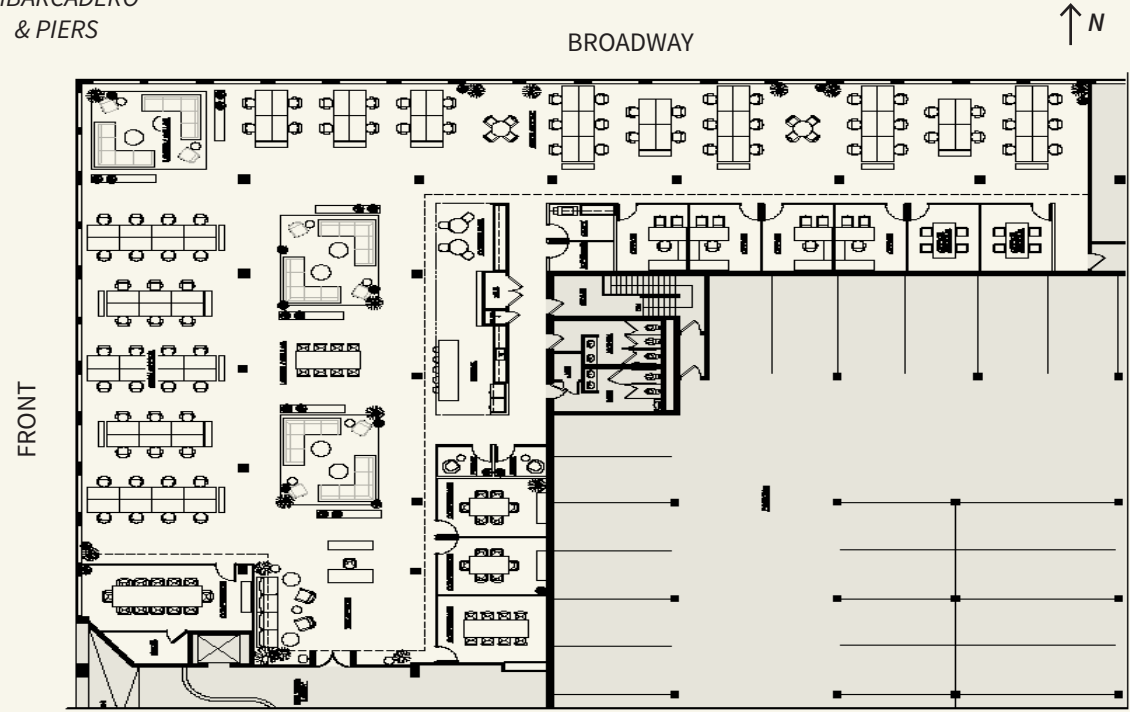
75 Broadway - Suite 206

14,945 RSF - Available Now

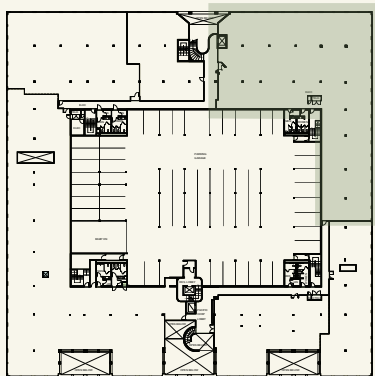


VIEWS OF
EMBARCADERO
& PIERS

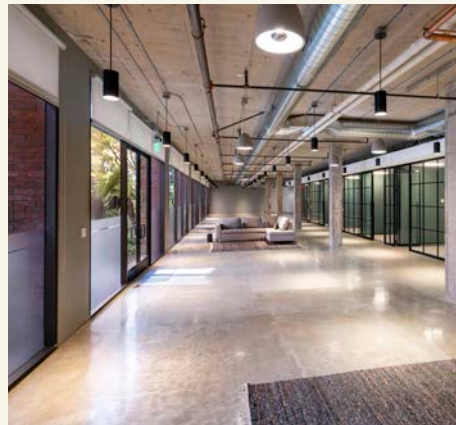
- ◇ Currently in shell condition
- ◇ Corner suite
- ◇ Long window lines overlooking Embarcadero and Piers
- ◇ Significant TI package available



BROADWAY



PACIFIC AVENUE MALL





North Park



One Sansome St, Floor 41, San Francisco, CA 94104

The information contained herein has been obtained from sources deemed reliable but has not been verified and no guarantee, warranty or representation, either express or implied, is made with respect to such information. Terms of sale or lease and availability are subject to change or withdrawal without notice.

Roman Adler
Exec Managing Director
roman.adler@nrmk.com
CA RE Lic #01520766

Bart O'Connor
Sr Managing Director
bart.oconnor@nrmk.com
CA RE Lic #01244495

Cassidy Zerrer
Sr Managing Director
cassidy.zerrer@nrmk.com
CA RE Lic #01779321

NEWMARK