



# 4800 Overton Plaza

CLASS A STATE OF THE ART FITNESS FOR LEASE

4800 Overton Plaza  
Fort Worth, TX 76109

 Transwestern

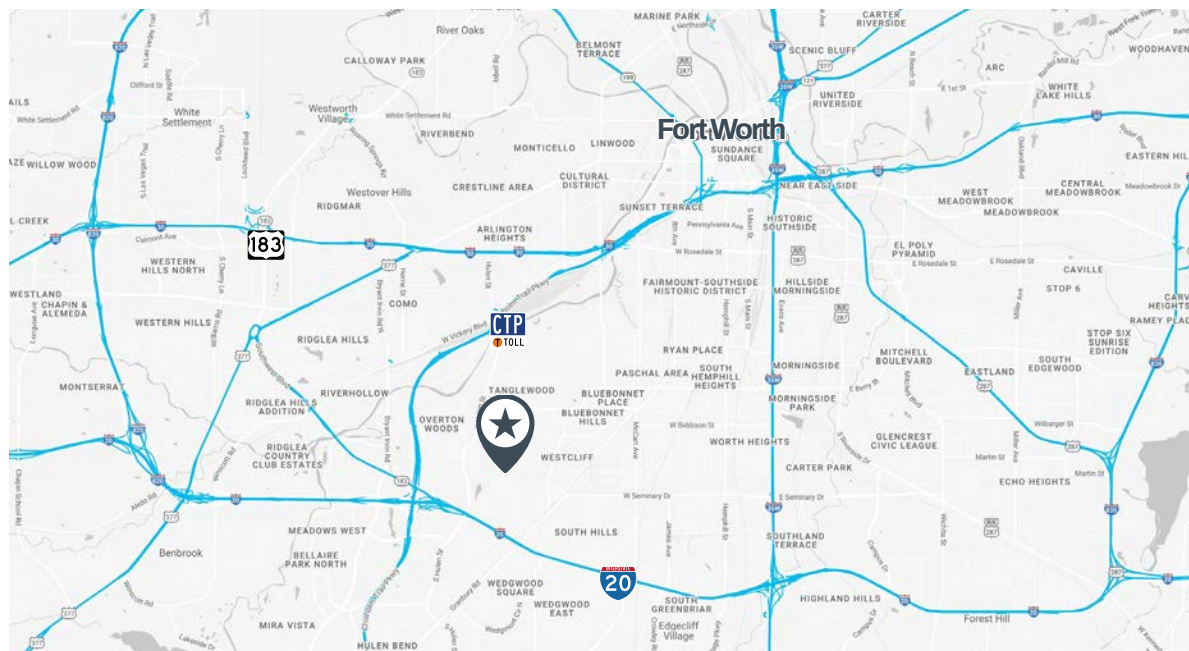
# About the Property

## PROPERTY INFORMATION

- 150,000 SF Class A office building located in
- Southwest Fort Worth
- Located just north of I-20 off Hulen St
- Free Unreserved Surface and Structured Parking
- 3:1,000 SF Parking Ratio
- State of the Art Fitness Center
- 24/7 Card Key Access & Onsite Security free for tenants

## LEASE INFORMATION

- Available Suites:
  - o Suite 450: 8,336 RSF (Divisible)
  - o Suite 350: 1,579 RSF
- Rate: \$30.00 PSF Full Service



Kirk Kelly

817-259-3533

[Kirk.Kelly@Transwestern.com](mailto:Kirk.Kelly@Transwestern.com)

Blake Grable

817-259-3502

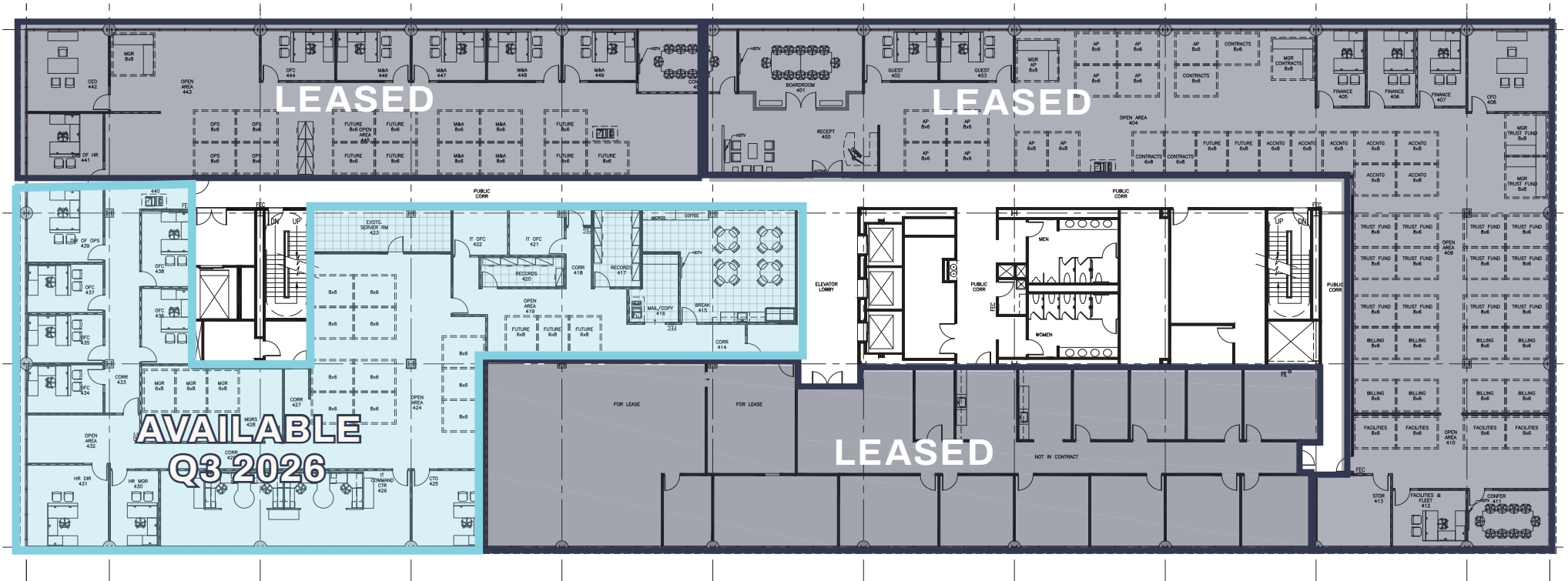
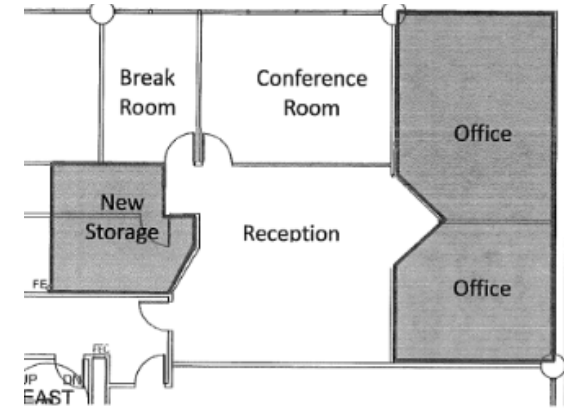
[Blake.Grable@Transwestern.com](mailto:Blake.Grable@Transwestern.com)

 Transwestern

# Floor Plan

SUITE # 350 • 1,579 RSF

SUITE # 450 • 8,336 RSF (Divisible)



Kirk Kelly

817-259-3533

Kirk.Kelly@Transwestern.com

Blake Grable

817-259-3502

Blake.Grable@Transwestern.com

4800 Overton Plaza  
Fort Worth, TX 76109

# Floor Plan

SUITE # 300 • 8,971 RSF



Kirk Kelly

817-259-3533

[Kirk.Kelly@Transwestern.com](mailto:Kirk.Kelly@Transwestern.com)

Blake Grable

817-259-3502

[Blake.Grable@Transwestern.com](mailto:Blake.Grable@Transwestern.com)

 Transwestern



Kirk Kelly

817-259-3533

[Kirk.Kelly@Transwestern.com](mailto:Kirk.Kelly@Transwestern.com)

Blake Grable

817-259-3502

[Blake.Grable@Transwestern.com](mailto:Blake.Grable@Transwestern.com)

 Transwestern



# Get in Touch

Kirk Kelly

817-259-3533

[Kirk.Kelly@Transwestern.com](mailto:Kirk.Kelly@Transwestern.com)

Blake Grable

817-259-3502

[Blake.Grable@Transwestern.com](mailto:Blake.Grable@Transwestern.com)