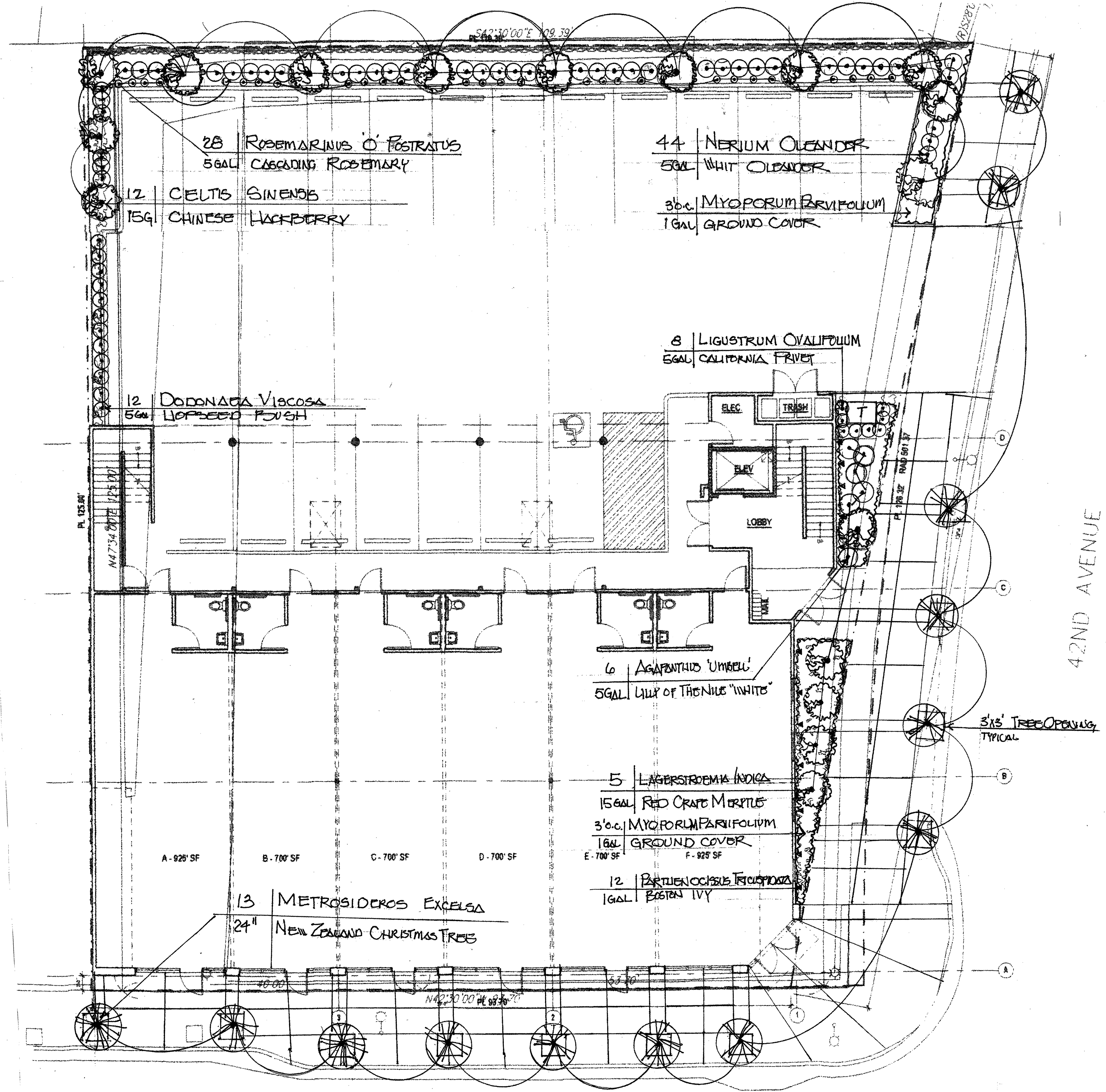


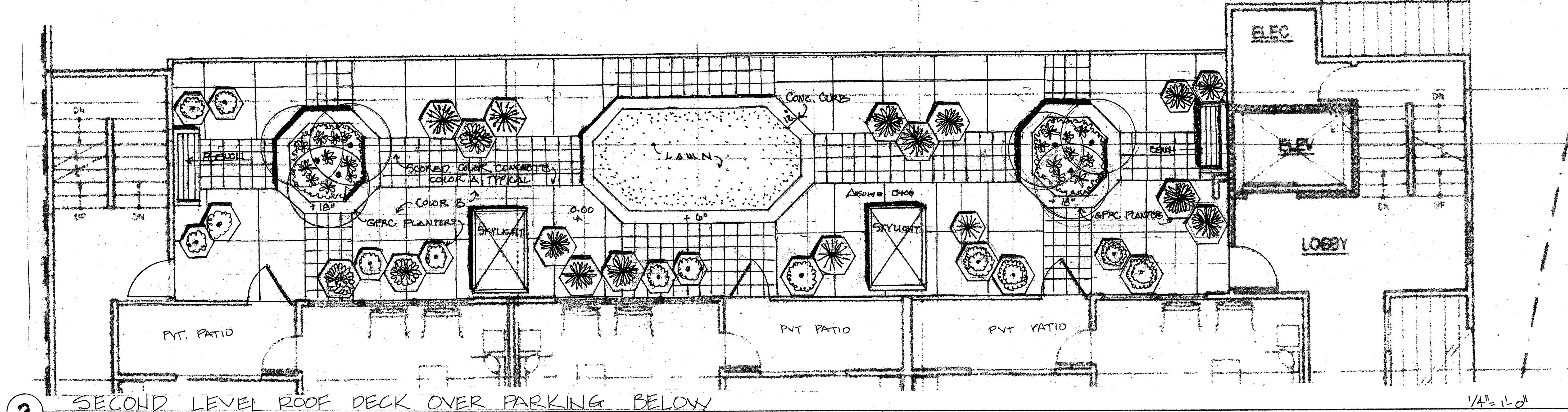
SITESCAPE PLANTS:

BOTANICAL NAME	COMMON NAME	SIZE	WIDTH	HEIGHT	REMARK
TREES:					
CELTIS SINENSIS	CHINESE HACKBERRY	16 GAL	3'-4'	12'-14'	STND.
LAGERSTROEMIA INDICA	RED CRANE MORTTLE	16 GAL	"	"	"
METROSIDEROS EXC.	NEW ZEALAND TREE	16 GAL	"	"	"
SHRUBS:					
AGAPANTHUS UMBELLUM	LILY OF THE NILE	5 GAL	1'-2'	2'	
DODONAEA VISCOSA	HOPSEED BUSH	"	"	3'	
LIGUSTRUM OVALIFOLIUM	CALIF. PRIVET	"	"	2'	
NERIUM OLEANDER	OLEANDER, WHITE	"	"	2'	
ROSEMARINUS O'FROST.	CASCADING ROSEMARY	"	"	"	
GROUND COVER:					
MYOPORUM PARVIFOLIUM	SPREADING G.C.	1 GAL	"	"	
VINES:					
PARTHENOCLISSUS TR.	BOSTON IVY	1 GAL	"	"	

NOTE: THE ABOVE PLANTS ARE ALL LOW WATER USE AS LISTED BY 'W.U.C.C.' FROM THE UNIVERSITY OF CALIF. EXTENSION.
5" OF MULCH WILL BE INSTALLED AND Drip IRRIGATION WILL BE STALLED.



1 GROUND FLOOR PLAN FOOHILL BOULEVARD SCHEMATIC LANDSCAPE PLAN GROUND FLOOR 1/8" = 1'-0"

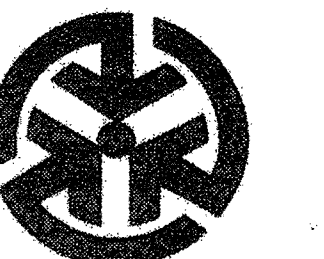


2 SECOND LEVEL ROOF DECK OVER PARKING BELOW 1/4" = 1'-0"

KEVIN E STONG
Architects, Inc.
Architecture • Interiors • Planning
2618 8th Street, Berkeley, California 94710
Tel: 510 204-9090 Fax: 510 204-9097
architects@stongarchitects.com
www.stongarchitects.com

MIXED USE
RETAIL
APARTMENTS

4134 FOOTHILL BLVD
OAKLAND, CA
94601



ROBERT LA ROCCA
& ASSOCIATES
URBAN DESIGN/LANDSCAPE
ARCHITECTURE
2434 Union Street
San Francisco, CA 94123
ph: (415) 777-5883 fx: (415) 389-0244
robert@laroccadesign.com
www.laroccadesign.com

All drawings and written material appearing
herein are the original and unpublished work of
the landscape architect, and the same may not
be duplicated, used or disclosed without the
written consent of the landscape architect.

REVISIONS

NO.	DATE	DESCRIPTION
1	1/1A/18	ISSUE TO CITY FOR DESIGN APPROVAL

SHEET TITLE

LANDSCAPE
PLANTING PLANS

JOB NO: 16015
SCALE: DATE: 1-1A-18
DRAWN BY:
FILE:
DRAWING NO: 8 OF 8
SHEET NO:

L-1.0